

Product datasheet for **RC234979**

GPR155 (NM_001267050) Human Tagged ORF Clone

Product data:

Product Type:	Expression Plasmids
Product Name:	GPR155 (NM_001267050) Human Tagged ORF Clone
Tag:	Myc-DDK
Symbol:	GPR155
Synonyms:	DEP.7; DEPDC3; PGR22
Mammalian Cell Selection:	Neomycin
Vector:	pCMV6-Entry (PS100001)
E. coli Selection:	Kanamycin (25 ug/mL)



[View online »](#)

ORF Nucleotide Sequence:

>RC234979 representing NM_001267050
 Red=Cloning site Blue=ORF Green=Tags(s)

TTTTGTAATACGACTCACTATAGGGCGGCCGGAATTCGTCGACTGGATCCGGTACCGAGGAGATCTGCC
 GCC**CGCATCGCC**

ATGAATTCTAATTTACCTGCAGAGAACTTAACCATTGCAGTCAATATGACCAAGACTTTGCCTACAGCAG
 TAACGCATGGATTTAATTCCTAATGACCCACCTTCAATGTCAATTACAAGCCTTTTCCAGCCTTACT
 GGAATGCTTTGGCATTGCTTTGTGGCTACATAGCAGGAAGGGCCAATGCATAACATCAACCCAGGCC
 AAAGGACTAGGAAATTTGTCTCCAGATTTGCACTTCCAGCTTTATTATCAAAAACATGGTTGACTTTA
 ATTTTTCCAATGTGGACTGGTCTTCTATATAGTATCTTAATTGCCAAAGCTTCTGATTTTTTCATTGT
 ATGTGTATTAACCTTATTGGTTGCCAGTCTGATAGTCGATTTAGCAAAGCTGGACTATTCCTATTTTT
 GCTACACAAAAGTAATGACTTTGCATTGGGATACCCTATAGTTGAAGCTTTATATCAAACACATACCCAG
 AATATCTCCAGTACATTTATTTGGTGGCACCAATATCTCTTATGATGTTAAACCCATAGGGTTATTTT
 CTGTGAAATCCAAAAGTGAAAGACACTCAAAATGCTTCTCAAAAATAAAATAAAATTTGGGACTCGGA
 CTCTCGCTGATTACAGAACCCAATAGTATTTATGGTCTTCATTGGCATCGCCTCAATTTTATCTTG
 ATCGAAAGGTACCTGTATATGTCGAAAATTTCTTGATGGACTTGGAAATCTTTTTCTGGATCAGCCCT
 ATTTTATCTTGGTCTCACGATGGTGGGAAAAATAAAGAGACTGAAGAAGTCGGCATTGTAGTACTAATT
 CTTCTCATCACAGCTAAACTTCTGGTGTGCCACTTCTGTGCAGAGAAATGGTGGAACTCTTGGACAAGG
 GCGACAGTGTGGTGAACCATACAAGTTTATCAAATATGCATTTCTGTATGGTGTATTTCTGTAGCACC
 AGGAGTGGCTATCTTTGCAACACAATTCACATGGAAGTAGAAATATAACCTCAGGGATGGTGATAAGC
 ACATTTGTGTCTGCTCCCATCATGTACGTTTCTGCCTGGTACTGACCTTCCCACTATGGACCCTAAGC
 CATTGGCATATGCCATCCAGAATGTTAGTTTTGATATAAGTATTGTCAGCCTGATCTCTGATCTGGTC
 TCTGGCTATTCTTTTTGAGTAAGAAATATAAACAGCTTCTCTCATATGCTTACAACATAATTTACTCATT
 GCTCAGTCTATTGCTGTGCTGGAATGATGATATGGAATTTTGTTAAAGAAAAAATTTTGTGGACAAA
 TTTTGGTGTGTTCTATTGTACAGCTCCCTCTATAGCACCTACCTGTGGACAGGCCCTTCTAGCAATTTT
 TTTGTTCTTTTAAAAAGCGAGAGAGGGTACAAATTCCTGTTGGAATAATCATAATATCTGGCTGGGGA
 ATTCTGCTCTCCTTGTGGTGTCTTTTGATAACTGGAAAACACAATGGAGATAGCATTGACTCAGCCT
 TCTTTTATGAAAAGAACAGATGATCACACAGCAGTACCCTGTTCTGCAGCATCTGATAGCTGGCAT
 ATCCCTCATGTGCATGAACCAGACTGCCAAGCAGGAAGCTATGAAGTTTCGATCAGTCTCAGAGCCAC
 AAAGTGGTGGAGCCTGGAATACTGCTTTTGAGGAGAGTCCAGCACCAGTAAATGAACCAGAACTTTTTA
 CAAGCTCTATTCCAGAAACAAGTTGCTGCTCCTGCTCCATGGGAAATGGTGAATTACACTGCCCATCAAT
 AGAGCCAATAGCAAAACAAGCACCAGTGAACCTGTGATTCTCTCGTTTGAGAAAAACAATCATTGTGTG
 AGTCGCTGTAACCTCCAGAGCTGCATATTAGCCAGGAAGAAGAACAGTATCTACAGAGTGGAGACCAGC
 AACTGACCCGACATGTGTGCTGTGTTACTTCTCATATTGGCCTGTTCCGCTAATCTTTCCAGTTGTTT
 ATGGTGGCTATTAACCAAGAGCCTGGAAGACTTTATGTTGAGTTACAGTTTTTCTGTGCCGTGTTAAC
 TTTGGTCAGGGATTTATTTCTTTGGAATCTTTGGATTAGATAAACATTTAATCATCCTGCCTTTCAAAA
 GAAGACTTGAATTCCTATGGAACAATAAAGACACAGCAGAAAACAGGGATTCTCCTGTTTCAGAGGAAAT
 AAAAATGACCTGTCAACAATTTATCCATTATCACCGTGACCTCTGTATCCGAAACATTGTCAAAGAAAGA
 AGGTGTGGTGCAAAGACTTCTGCTGGAATTTCTGTGGCTGTGACCTGGTGGAGCTGGCTAATTGAAGTCG
 GCCTTGCCTCCGACCGTGGTGAAGCTGTGATATACGGAGACAGGCTGGTACAAGGGGGAGTCATCCAACA
 TATTACCAACGAGTATGAATCCGGGATGAGTACTTGTTTTACAGATTTCTTCAAAGAGTCTGAAACAG
 AGTCTCTGCTATTAATGCAAACACTCTCCAACAGGAAAGATATAAAGAAATTGAGCATTATCCCCAC
 CCTCACATTCCCCTAAGACC

ACGCGTACGCGGCCGCTCGAGCAGAACTCATCTCAGAAGAGGATCTGGCAGCAATGATATCTGGATT
 ACAAGGATGACGACGATAAGGTTTAA

Protein Sequence: >RC234979 representing NM_001267050
 Red=Cloning site Green=Tags(s)

MNSNLP AENLTI AVNMTKLTPTAVTHGFNSTNDPPSMSITRLFPALLECFGIVLCGYIAGRANVITSTQA
 KGLGNFVSRFALPALLFKNMVLNFSNVDWSFLYSILIAKASVFFIVCVLTLLVASPDSRFKAGLFP
 ATQSNDFALGYPIVEALYQTTYPEYLQYIYL VAPISLMMLNPIGFI FCEIQKWKDTQNASQNKIKIVGLG
 LLRVLQNPVFMVFIGIAFNFI LDRKVPVYVENFLDGLGNSFSGSALFYGLT MVMGKIKRLKKSFAVLI
 LLITAKLLVLP LLLCREMVELLDKGDVSNHTSLSNYAFLYGVFPVAPGVAIFATQFNMEVEIITSGMVIS
 TFVSAPIMYVSAWLLTFPTMDPKPLAYAIQNVSFDISIVSLISLIWLAILLSSKYYKQLPHMLTNNLLI
 AQSIVCAGMMIWNFVKEKNFVGGQILVFVLLYSSLYSTYLWTGLLAISLFLKKRERVQIPVGIISGWG
 IPALLVGVLLITGKHNGDSIDSAFFYGKEQMITTAVTLFCSIL IAGISLMCMNQTAAQAGSYEGFDQSQSH
 KVVEPGNTAFEE SPAPVNEPELFTSSIPETSCCSCSMGNGELHCPSEPIANTSTSEPVIPSEKNNHCV
 SRCNSQSCILAQEEEQYLQSGDQQLTRHVLLCLLLIIGLFANLSSCLWLFNQEPGRLYVELQFFCAVFN
 FGQGFISFGIFGLDKHLIILPFKRRLEFLWNNKDTAENRDPVSEEIKMTCQQFIHYHRDL CIRNIVKER
 RCGAKTSAGTFCGCDLVSWLIEVGLASDRGEAVIYGDRLVQGGVIQHITNEYEFRDEYLFYRFLQK SPEQ
 SPPAINANTLQQERYKEIEHSSPPSHSPKT

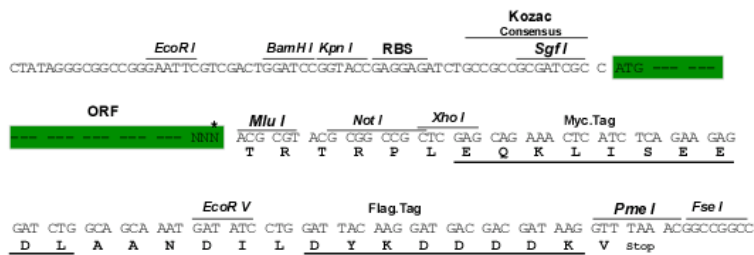
TRTRPLEQKLISEEDLAANDILDYKDDDDKV

Chromatograms: https://cdn.origene.com/chromatograms/mg2605_h05.zip

Restriction Sites: SgfI-MluI

Cloning Scheme:

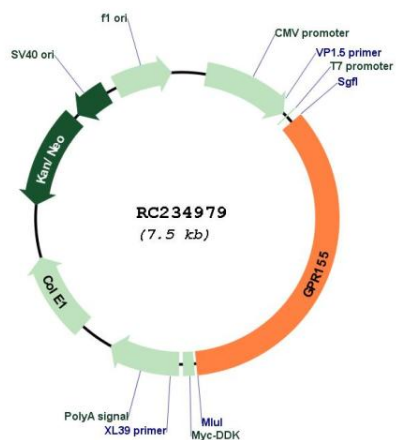
Cloning sites used for ORF Shuttling:



* The last codon before the Stop codon of the ORF

ACCN:	NM_001267050
ORF Size:	2610 bp
OTI Disclaimer:	The molecular sequence of this clone aligns with the gene accession number as a point of reference only. However, individual transcript sequences of the same gene can differ through naturally occurring variations (e.g. polymorphisms), each with its own valid existence. This clone is substantially in agreement with the reference, but a complete review of all prevailing variants is recommended prior to use. More info
OTI Annotation:	This clone was engineered to express the complete ORF with an expression tag. Expression varies depending on the nature of the gene.
Components:	The ORF clone is ion-exchange column purified and shipped in a 2D barcoded Matrix tube containing 10ug of transfection-ready, dried plasmid DNA (reconstitute with 100 ul of water).
Reconstitution Method:	<ol style="list-style-type: none">1. Centrifuge at 5,000xg for 5min.2. Carefully open the tube and add 100ul of sterile water to dissolve the DNA.3. Close the tube and incubate for 10 minutes at room temperature.4. Briefly vortex the tube and then do a quick spin (less than 5000xg) to concentrate the liquid at the bottom.5. Store the suspended plasmid at -20°C. The DNA is stable for at least one year from date of shipping when stored at -20°C.
RefSeq:	NM_001267050.2
RefSeq Size:	7451 bp
RefSeq ORF:	2613 bp
Locus ID:	151556
UniProt ID:	Q7Z3F1
Cytogenetics:	2q31.1
Protein Families:	Druggable Genome, GPCR, Transmembrane
MW:	96.9 kDa

Product images:



Circular map for RC234979