

Product datasheet for **RC234959**

Matrin 3 (MATR3) (NM_001194955) Human Tagged ORF Clone

Product data:

Product Type:	Expression Plasmids
Product Name:	Matrin 3 (MATR3) (NM_001194955) Human Tagged ORF Clone
Tag:	Myc-DDK
Symbol:	Matrin 3
Synonyms:	ALS21; MPD2; VCPDM
Mammalian Cell Selection:	Neomycin
Vector:	pCMV6-Entry (PS100001)
E. coli Selection:	Kanamycin (25 ug/mL)



[View online »](#)

ORF Nucleotide Sequence:

>RC234959 ORF sequence
 Red=Cloning site Blue=ORF Green=Tags(s)

TTTTGTAATACGACTCACTATAGGGCGGCCGGAATTCGTGACTGGATCCGGTACCGAGGAGATCTGCC
 GCC**CGGATCGCC**

ATGTCCAAGTCATTCCAGCAGTCATCTCTCAGTAGGGACTCACAGGGTCATGGGCGTGACCTGTCTGCGG
 CAGGAATAGGCCTTCTTGTCTGCTACCCAGTCTTTAAGTATGCCAGCATCTCTTGGAAGGATGAACCA
 GGGTACTGCACGCCTTGCTAGTTAATGAATCTTGGAATGAGTCTTCATTGAATCAACAAGGAGCTCAT
 AGTGCAGTGTCTTCTGCTAGTACTTCTCCATAATTTGCAGTCTATATTTAACATTGGAAGTAGAGGTC
 CACTCCCTTTATCTTCTCAACACCGTGGAGATGCAGACCAGGCCAGTAACATTTTGGCCAGCTTTGGTCT
 GTCTGCTAGAGACTTAGATGAAGTGAAGTCTGTTATCCAGAGGACAAGATTACTCCTGAGAATTTGCCCAA
 ATCCTTCTACAGCTTAAAAGGAGGAGAACTGAAGAAGGCCCTACCTTGAGTTATGGTAGAGATGGCAGAT
 CTGCTACACGGGAGCCACCATACAGAGTACCTAGGGATGATTGGGAAGAAAAAGGCACTTTAGAAGAGA
 TAGTTTTGATGATCGTGGTCTAGTCTCAACCCAGTGTGATTATGACCATGGAAGTCGTTCTCAAGAA
 TCTGGTTATTATGACAGAATGGATTATGAAGATGACAGATTAAGAGATGGAGAAAGGTGTAGGGATGATT
 CTTTTTTGGTGAGACCTCGCATAACTATCATAAATTTGACAGTGAAGTATGAGAGAAATGGGACGTGGTCC
 TGGCCCTTACAAGAGAGATCTCTTTTGGAAAAAGAGAGGCGCTCTCCAAGTAGCAATATTGAAGAC
 TTCCATGGACTCTTACCGAAGGGTTATCCCATCTGTGCTCTATATGTGATTTGCCAGTTCATTCTAATA
 AGGAGTGGAGTCAACATATCAATGGAGCAAGTACAGTCGTGATGCCAGCTTCTTCTTGAATCTACCC
 AGAATGGAATCCTGACAATGATACAGGACACACAATGGGTGATCCATTCTGTTGCAGCAGTCTACAAAT
 CCAGCACCAGGAATCTGGGACCTCCACCTCCCTCATTTTCATCTTGGGGGACCAGCAGTTGGACCAAGAG
 GAAATCTGGGTGCTGAAATGGAACCTGCAAGGACCTAGACACATGCAGAAAGCCAGATGGAAACTAG
 CAGAGTTGTTACATCATGGATTTTCAACGAGGGAAAAACTTGAGATACCAGCTATTACAGCTGGTAGAA
 CCATTTGGAGTCAATTTCAATCATCTGATTCTAAATAAAATTAATGAGGCATTTATTGAAATGGCAACCA
 CAGAGGATGCTCAGGCCGAGTGGATTATTACACAACCACACCAGCGTTAGTATTTGGCAAGCCAGTGAG
 AGTTCAATTTATCCAGAAGTATAAAAGAATAAAGAAACCTGAAGGAAAGCCAGATCAGAAGTTTGTCAA
 AAGCAAGAGCTTGGACGTGTGATACATCTCAGCAATTTGCCGCTTCTGGCTATTCTGATAGTGTGTTT
 TCAAGCTTGTGAGCCTTATGGGAAAAAAGAAATACATATTGATGAGGATGAAAAGTCAGGCTTTTAT
 TGAGATGGAGACAAGAGAAGATGCAATGGCAATGGTTGACCATTGTTGAAAAAGCCCTTTGGTTTCAG
 GGGAGATGTGTGAAGTTGACCTGTCTGAGAAATATAAAAACTGTTCTGAGGATTCCAAACAGAGGCA
 TTGATTTACTGAAAAAGATAAATCCCGAAAAAGATCTTACTCTCCAGATGGCAAAGAATCTCCAAGTGA
 TAAGAAATCCAAAAGTATGGTTCCAGAAAGACTGAGAGTTCAACCGAAGGTAAGAAACAAGAGAAG
 TCCGGTGAAGATGGTGAGAAAGACAAAAGGATGACCAGACAGAGCAGGAACCTAATATGCTTCTTGAAT
 CTGAAGATGAGCTACTTGTAGATGAAGAAGAAGCAGCAGCACTGCTAGAAAAGTGGCAGTTCAGTGGGAGA
 CGAGACCGATCTTGCTAATTTAGGTGATGTGGCTTCTGATGGGAAAAAGGAACCATCAGATAAAGCTGTG
 AAAAAAGATGGAAGTCTTCAGCAGCAGCAAAGAAAAAGCTTAAAAAGGTGGACAAGATCGAGGAACTTG
 ATCAAGAAAACGAAGCAGCGTTGGAAAAAGAAATTAATAAAGTGAAGAAAACACAGAACCAGGTGCTGAATC
 TTCTGAGAACGCTGATGATCCCAACAAAGATACAAGTGAAGAACGCAGATGGTCAAAGTATGAGAACAAG
 GACGACTATACAATCCCAGATGAGTATAGAATTGGACCATATCAGCCCAATGTTCTCTGTTGATAGACT
 ATGTGATACCTAAAACAGGGTTTTACTGTAAGCTGTGTTCACTCTTTTATACAAATGAAGAAGTTGCAAA
 GAATACTCATTGCAGCAGCCTTCTCATTATCAGAAATTAAGAAATTTCTGAATAAATTGGCAGAAGAA
 CGCAGACAGAAGAAGGAAACT

ACGCGTACGCGGCCGCTCGAGCAGAAACTCATCTCAGAAGAGGATCTGGCAGCAATGATATCTGGATT
 ACAAGGATGACGACGATAAGGTTTAA

Protein Sequence: >RC234959 protein sequence
 Red=Cloning site Green=Tags(s)

```

MSKSFQQSSLSRDSQGHGRDL SAAGIGLLAAATQSL SMPASLGRMNQGTARLASLMNLGMSSSLNQQGAH
SALSSASTSSHNLSIFNIGSRGPLPLSSQHRGDADQASNILASFGLSARDLDELSPYEDKITPENLPQ
ILLQLKRRRTEEGPTLSYGRDGRSATREPPYRVP RDDWEEKRHFRRDSFDDRGP SLNPLVDYDHGSRSQE
SGYYDRMDYEDRLRDGERCRD DSFFGETSHNYHKFDSEYERMGRGPGLQERSLF EKRGAPPSSNIED
FHGLLPKGYPHLCSICDLPVHSNKEWSQHINGASHSRRCQLLEIYPEWNP DNDTGHMTGDPFMLQQSTN
PAPGILGPPPPS FHLG GPAVGPRGNL GAGNGLQGPRHMQKGRVETSRVVHIMDFQRGKNLRYQLLQ LVE
PFGVISNHLILNKINEAFIEMATTEDAQAADVYTTTPALVFGKPV RVHLSQKYKR IKKPEGKPDQKFDQ
KQELGRVIHLSNLPHSGYSDSAVLKLAEPYGKIKNYILMRMKSQAFIEMETREDAMAMVDHCLKKALWFQ
GRCVKVDLSEKYKLVLRIPNRGIDLLKKDKSRKRSYSPDGKESPSDKKSKTDG SQKTESSTEGKEQEEK
SGEDGEKDTKDDQTEQEPNMLLESEDELLVDEEEAAALLES GSSVGD ETDLANLGDVASDGKKEPSDKAV
KKDGSASAAA KKKLKKVDKIEELDQENEAAL ENGIKNEENTEPGAESSENADDPNKDTS ENADGQSDENK
DDYTIPDEYRIGPYQPNVPV GIDYVIPKTGFYCKLCSLFYTNEEVAKNTHCSSLPHYQLKKKFLNKLAEE
RRQKKET
  
```

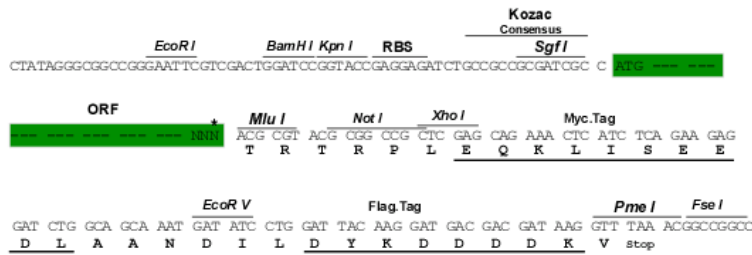
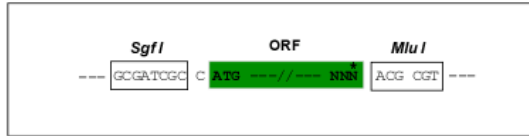
TRTRPLEQKLISEEDLAANDILDYKDDDDKV

Chromatograms: https://cdn.origene.com/chromatograms/mk6289_g03.zip

Restriction Sites: SgfI-MluI

Cloning Scheme:

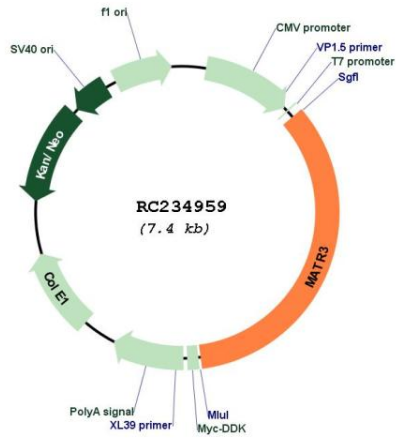
Cloning sites used for ORF Shuttling:



* The last codon before the Stop codon of the ORF

ACCN:	NM_001194955
ORF Size:	2541 bp
OTI Disclaimer:	<p>Due to the inherent nature of this plasmid, standard methods to replicate additional amounts of DNA in E. coli are highly likely to result in mutations and/or rearrangements. Therefore, OriGene does not guarantee the capability to replicate this plasmid DNA. Additional amounts of DNA can be purchased from OriGene with batch-specific, full-sequence verification at a reduced cost. Please contact our customer care team at custsupport@origene.com or by calling 301.340.3188 option 3 for pricing and delivery.</p> <p>The molecular sequence of this clone aligns with the gene accession number as a point of reference only. However, individual transcript sequences of the same gene can differ through naturally occurring variations (e.g. polymorphisms), each with its own valid existence. This clone is substantially in agreement with the reference, but a complete review of all prevailing variants is recommended prior to use. More info</p>
OTI Annotation:	This clone was engineered to express the complete ORF with an expression tag. Expression varies depending on the nature of the gene.
Components:	The ORF clone is ion-exchange column purified and shipped in a 2D barcoded Matrix tube containing 10ug of transfection-ready, dried plasmid DNA (reconstitute with 100 ul of water).
Reconstitution Method:	<ol style="list-style-type: none"> 1. Centrifuge at 5,000xg for 5min. 2. Carefully open the tube and add 100ul of sterile water to dissolve the DNA. 3. Close the tube and incubate for 10 minutes at room temperature. 4. Briefly vortex the tube and then do a quick spin (less than 5000xg) to concentrate the liquid at the bottom. 5. Store the suspended plasmid at -20°C. The DNA is stable for at least one year from date of shipping when stored at -20°C.
RefSeq:	NM_001194955.1 , NP_001181884.1
RefSeq Size:	5282 bp
RefSeq ORF:	2544 bp
Locus ID:	9782
UniProt ID:	P43243
Cytogenetics:	5q31.2
MW:	94.6 kDa
Gene Summary:	<p>This gene encodes a nuclear matrix protein, which is proposed to stabilize certain messenger RNA species. Mutations of this gene are associated with distal myopathy 2, which often includes vocal cord and pharyngeal weakness. Alternatively spliced transcript variants, including read-through transcripts composed of the upstream small nucleolar RNA host gene 4 (non-protein coding) and matrin 3 gene sequence, have been identified. Pseudogenes of this gene are located on chromosomes 1 and X. [provided by RefSeq, Aug 2013]</p>

Product images:



Circular map for RC234959