

Product datasheet for **RC234958**

Matrin 3 (MATR3) (NM_001194954) Human Tagged ORF Clone

Product data:

Product Type:	Expression Plasmids
Product Name:	Matrin 3 (MATR3) (NM_001194954) Human Tagged ORF Clone
Tag:	Myc-DDK
Symbol:	Matrin 3
Synonyms:	ALS21; MPD2; VCPDM
Mammalian Cell Selection:	Neomycin
Vector:	pCMV6-Entry (PS100001)
E. coli Selection:	Kanamycin (25 ug/mL)



[View online »](#)

**ORF Nucleotide
Sequence:**

>RC234958 ORF sequence
 Red=Cloning site Blue=ORF Green=Tags(s)

TTTTGTAATACGACTCACTATAGGGCGGCCGGAATTCGTGACTGGATCCGGTACCGAGGAGATCTGCC
 GCC**CGGATCGCC**

ATGTCCAAGTCATTCCAGCAGTCATCTCTCAGTAGGGACTCACAGGGTCATGGGCGTGACCTGTCTGCGG
 CAGGAATAGGCCTTCTTGCTGCTGCTACCCAGTCTTTAAGTATGCCAGCATCTCTTGGAAGGATGAACCA
 GGGTACTGCACGCCTTGCTAGTTAATGAATCTTGGAATGAGTCTTCATTGAATCAACAAGGAGCTCAT
 AGTGCAGTGTCTTCTGCTAGTACTTCTCCATAATTTGCAGTCTATTTAACATTGGAAGTAGAGGTC
 CACTCCCTTTATCTTCTCAACACCGTGGAGATGCAGACCAGGCCAGTAACATTTGGCCAGCTTTGGTCT
 GTCTGCTAGAGACTTAGATGAAGTGAAGTCTGTTATCCAGAGGACAAGATTACTCCTGAGAATTTGCCCAA
 ATCCTTCTACAGCTTAAAAGGAGGAGAACTGAAGAAGGCCCTACCTTGAGTTATGGTAGAGATGGCAGAT
 CTGCTACACGGGAGCCACCATACAGAGTACCTAGGGATGATTGGGAAGAAAAAGGCACTTTAGAAGAGA
 TAGTTTTGATGATCGTGGTCTAGTCTCAACCCAGTGTGATTATGACCATGGAAGTCGTTCTCAAGAA
 TCTGGTTATTATGACAGAATGGATTATGAAGATGACAGATTAAGAGATGGAGAAAGGTGTAGGGATGATT
 CTTTTTTGGTGAGACCTCGCATAACTATCATAAATTTGACAGTGAAGTATGAGAGAAATGGGACGTGGTCC
 TGGCCCTTACAAGAGAGATCTCTTTTGAGAAAAAGAGAGGCGCTCTCCAAGTAGCAATATTGAAGAC
 TTCCATGGACTCTTACCGAAGGGTTATCCCATCTGTGCTCTATATGTGATTTGCCAGTTCATTCTAATA
 AGGAGTGGAGTCAACATATCAATGGAGCAAGTCAAGTCGTCGATGCCAGCTTCTTCTTGAATCTACCC
 AGAATGGAATCCTGACAATGATACAGGACACACAATGGGTGATCCATTCTGTTGCAGCAGTCTACAAAT
 CCAGCACAGGAATCTGGGACCTCCACCTCCCTCATTTTCATCTTGGGGGACCAGCAGTTGGACCAAGAG
 GAAATCTGGGTGCTGAAATGGAACCTGCAAGGACCTAGACACATGCAGAAAGCCAGAGTGGAAACTAG
 CAGAGTTGTTACATCATGGATTTTCAACGAGGGAAAAACTTGAGATACCAGCTATTACAGCTGGTAGAA
 CCATTTGGAGTCAATTTCAATCATCTGATTCTAAATAAAATTAATGAGGCATTTATTGAAATGGCAACCA
 CAGAGGATGCTCAGGCCGAGTGGATTATTACACAACCACACCAGCGTTAGTATTTGGCAAGCCAGTGAG
 AGTTCAATTTATCCAGAAGTATAAAAGAATAAAGAAACCTGAAGGAAAGCCAGATCAGAAGTTTGATCAA
 AAGCAAGAGCTTGGACGTGTGATACATCTCAGCAATTTGCCGCTTCTGGCTATTCTGATAGTGTGTTT
 TCAAGCTTGTGAGCCTTATGGGAAATAAAGAATTACATATTGATGAGGATGAAAAGTCAGGCTTTTAT
 TGAGATGGAGACAAGAGAAGATGCAATGGCAATGGTTGACCATTGTTGAAAAAGCCCTTTGGTTTCAG
 GGGAGATGTGTGAAGTTGACCTGTCTGAGAAATAAAAAACTGTTCTGAGGATTCCAAACAGAGGCA
 TTGATTTACTGAAAAAGATAAATCCCGAAAAAGATCTTACTCTCCAGATGGCAAAGAATCTCCAAGTGA
 TAAGAAATCCAAAAGTATGGTTCCAGAAAGACTGAGAGTTCAACCGAAGGTAAGAAACAAGAGAAGAG
 TCCGGTGAAGATGGTGAGAAAGACAAAAGGATGACCAGACAGAGCAGGAACCTAATATGCTTCTTGAAT
 CTGAAGATGAGCTACTTGTAGATGAAGAAGAAGCAGCAGCACTGCTAGAAAGTGGCAGTTCAGTGGGAGA
 CGAGACCGATCTTGCTAATTTAGGTGATGTGGCTTCTGATGGGAAAAAGGAACCATCAGATAAAGCTGTG
 AAAAAAGATGGAAGTCTTCAGCAGCAGCAAAGAAAAAGCTTAAAAAGGTGGACAAGATCGAGGAACTTG
 ATCAAGAAAACGAAGCAGCGTTGGAAAAAGGAAATTAATAAGTGAAGAAAACACAGAACCAGGTGCTGAATC
 TTCTGAGAACGCTGATGATCCCAACAAAGATAACAAGTGAAGAACGCAGATGGTCAAAGTATGAGAACAAG
 GACGACTATACAATCCCAGATGAGTATAGAATTGGACCATATCAGCCCAATGTTCTCTGTTGATAGACT
 ATGTGATACCTAAAACAGGGTTTTACTGTAAGCTGTGTTCACTCTTTTATACAAATGAAGAAGTTGCAAA
 GAATACTCATTGCAGCAGCCTTCTCATTATCAGAAATTAAGAAATTTCTGAATAAATTGGCAGAAGAA
 CGCAGACAGAAGAAGGAAACT

ACGCGTACGCGGCCGCTCGAGCAGAAACTCATCTCAGAAGAGGATCTGGCAGCAATGATATCCTGGATT
 ACAAGGATGACGACGATAAGGTTTAA

Protein Sequence: >RC234958 protein sequence
 Red=Cloning site Green=Tags(s)

```

MSKSFQQSSLSRDSQGHGRDL SAAGIGLLAAATQSL SMPASLGRMNQGTARLASLMNLGMSSSLNQQGAH
SALSSASTSSHNLQSI FNIGSRGPLPLSSQHGRDADQASNILASFGLSARDLDEL SRYPEDKITPENLPQ
ILLQLKRRRTEEGPTLSYGRDGRSATREPPYRVP RDDWEEKRHFRRDSFDDRGP SLNPLVDYDHGSRSQE
SGYYDRMDYEDRLRDGERCRD DSFFGETSHNYHKFDSEYERMGRGPGPLQERSLF EKRGAPPSSNIED
FHGLLPKGYPHLCSICDLPVHSNK EWSQHINGASHSRRCQLLEIYPEWNP DNDTGHTMGDPFMLQQSTN
PAPGILGPPPPS FHLG GPAVGPRGNL GAGNGLQGPRHMQKGRVETSRVVHIMDFQRGKNLRYQLLQ LVE
PFGVISNHLILNKINEAFIEMATTEDAQA AVDYTTTPALVFGKPV RVHLSQKYKR IKKPEGKPDQKFDQ
KQELGRVIHLSNLPHSGYSDSAVLKLAEPY GKIKNYILMRMKSQAFIEMETREDAMAMVDHCLKKALWFQ
GRCVKVDLSEKYKLVLRIPNRGIDLLKKDKSRKRSYSPDGKESPSDKKSKTDG SQKTESSTEGKEQEEK
SGEDGEKDTKDDQTEQEPNMLLESEDELLVDEEEAAALLES GSSVGD ETDLANLGDVASDGKKEPSDKAV
KKDGSASAAA KKKLKKVDKIEELDQENEAAL ENGIKNEENTEPGAESSENADDPNKDTS ENADGQSDENK
DDYTIPDEYRIGPYQPNVPV GIDYVIPKTGFYCKLCSLFYTNEEVAKNTHCSSLPHYQLKKKFLNKLAEE
RRQKKET
  
```

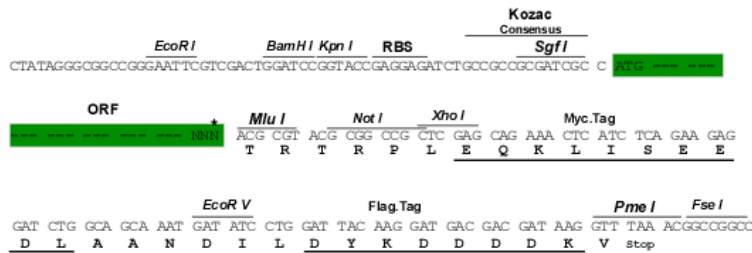
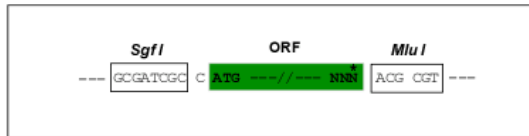
TRTRPLEQKLISEEDLAANDILDYKDDDDKV

Chromatograms: https://cdn.origene.com/chromatograms/mk6289_g03.zip

Restriction Sites: SgfI-MluI

Cloning Scheme:

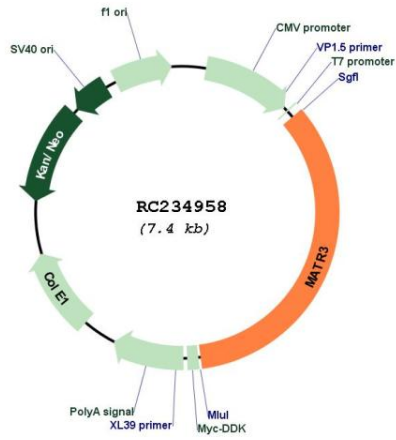
Cloning sites used for ORF Shuttling:



* The last codon before the Stop codon of the ORF

ACCN:	NM_001194954
ORF Size:	2541 bp
OTI Disclaimer:	The molecular sequence of this clone aligns with the gene accession number as a point of reference only. However, individual transcript sequences of the same gene can differ through naturally occurring variations (e.g. polymorphisms), each with its own valid existence. This clone is substantially in agreement with the reference, but a complete review of all prevailing variants is recommended prior to use. More info
OTI Annotation:	This clone was engineered to express the complete ORF with an expression tag. Expression varies depending on the nature of the gene.
Components:	The ORF clone is ion-exchange column purified and shipped in a 2D barcoded Matrix tube containing 10ug of transfection-ready, dried plasmid DNA (reconstitute with 100 ul of water).
Reconstitution Method:	<ol style="list-style-type: none"> 1. Centrifuge at 5,000xg for 5min. 2. Carefully open the tube and add 100ul of sterile water to dissolve the DNA. 3. Close the tube and incubate for 10 minutes at room temperature. 4. Briefly vortex the tube and then do a quick spin (less than 5000xg) to concentrate the liquid at the bottom. 5. Store the suspended plasmid at -20°C. The DNA is stable for at least one year from date of shipping when stored at -20°C.
RefSeq:	NM_001194954.1 , NP_001181883.1
RefSeq Size:	5522 bp
RefSeq ORF:	2544 bp
Locus ID:	9782
UniProt ID:	P43243
Cytogenetics:	5q31.2
MW:	94.6 kDa
Gene Summary:	This gene encodes a nuclear matrix protein, which is proposed to stabilize certain messenger RNA species. Mutations of this gene are associated with distal myopathy 2, which often includes vocal cord and pharyngeal weakness. Alternatively spliced transcript variants, including read-through transcripts composed of the upstream small nucleolar RNA host gene 4 (non-protein coding) and matrin 3 gene sequence, have been identified. Pseudogenes of this gene are located on chromosomes 1 and X. [provided by RefSeq, Aug 2013]

Product images:



Circular map for RC234958