

Product datasheet for **RC234944**

ARMCX5-GPRASP2 (NM_001199818) Human Tagged ORF Clone

Product data:

Product Type:	Expression Plasmids
Product Name:	ARMCX5-GPRASP2 (NM_001199818) Human Tagged ORF Clone
Tag:	Myc-DDK
Symbol:	ARMCX5-GPRASP2
Synonyms:	ARMCX5-GPRASP2-BHLHB9-LINC00630; bHLHb9; p60TRP
Mammalian Cell Selection:	Neomycin
Vector:	pCMV6-Entry (PS100001)
E. coli Selection:	Kanamycin (25 ug/mL)



[View online »](#)

ORF Nucleotide Sequence:

>RC234944 representing NM_001199818.
 Blue=ORF Red=Cloning site Green=Tag(s)

```
GCTCGTTTAGTGAACCGTCAGAATTTTGTAAACGACTCACTATAGGGCGGCCGGGAATTCGTGACTG
GATCCGGTACCGAGGAGATCTGCCGCCACGATCGCC
ATGATGGGGCAGAGATTGAGCCTAGTGCCCAAGCCAGCCTGAAAAGAAGGCTGGGGAAGAGGTTATC
GCTGGGCTGAGAGAGAGAATGATGTCCCTCTGGTGGTCAGACCCAAGGTTAGGACCCAGGCAACTACT
GGGGCAAGGCCAAAACCTGAGACCAAGTCTGTGCCTGCGGCAAGGCCAAAACCTGAGGCCAAGCAATG
TCTGGGGCAAGGCCAAAACCTGAGGTCCAAGTAATGGGTGGTGAAGACCCAAAACCGAGGCTCAAGGA
ATCACAGGGGCCAGGCCAAAACCGATGCCAGGGCAGTAGGTGGCGCTCGTTCTAAAACCTGATGCCAAG
GCAATCCCTGGAGCAAGGCCAAGGATGAGGCCAGGCATGGGCCAGAGTGAATTTGGGACTGAAGCA
GTGTCACAGGCAGAAGGAGTGTCCAGACTAATGCCGTTGCTTGGCCACTGGCCACTGCTGAGTCTGGA
TCAGTTACTAAATCTAAGGGCTGTCTATGGATAGAGAACTAGTCAATGTGGATGCTGAAACCTTCTCT
GGCACCCAGGGTCAGAAAGGAATCCAGCCCTGGTTTGGACCAGGGGAGGAGACTAATATGGGGTCTTGG
TGCTATCCAGGCCAGGGCCAGAGAGGAGGCCTAATGAGTCTGGGTTCTGGTCAGCAGATGAGACC
TCTACAGCGTCTCTTTCTGGACTGGAGAAGAGACAAGTGTGAGATCATGGCCCAGGGAAGAGTCCAAT
ACCAGGTCAGGCACAGGGCTAAACATCAGACTAATCCCAGGTCCAGGCCAGATCCAAGCAAGAAGCC
TATGTTGATTCCTGGTCTGGATCTGAGGATGAGGCCAGCAACCCATTCTCCTTCTGGGTTGGAGAAAAT
ACCAATAACTTGTTCAGGCCAGAGTCAGGGAGGAGGCAATAATCAGGTCCAAGCTCAGGACAAATAGA
GAAGATTGTTTTGAATCTGAGTCTGAAGATGAGTTCTATAAGCAGTCTGGGTTTTGCCTGGAGAAGAG
GCCAATAGTAGATTACGGCACAGAGACAAAAGAAGTCTAATACTGCCTTGAAACTCAGGGCCCAGAAA
GATGTTGACAGTGATAGGGTCAAACAAGAACCAGGTTTGAGGAGGAAGTCAATATTGGGCTCTGGTTC
TGGGCAGAAAAGAGGCCAGTTTGGAGGGTGGAGCTTCAGCAATCTGTGAATCTGAGCCAGGAAGTGA
GAGGGGGCCATTGGCGGATCCCGTACTGGGCTGAGGAAAAGTCCAGTTTGGGGGCTGTGGCCAGAGAA
GAGGCCAAGCCGAGTCTGAAGAAGAGGCCATATTTGGGTCTGGTCTGGGACAGAGATGAGGCCCTGC
TTTGACCTAAATCCCTGTCTGTGTACAAGTCAAGTCAAGTTCAGAGATGCAGCTGAGGAGCTTAAT
GCATCCTCCAGGCCAAAACCTGGGACGAGGTCCTGTTGAATTCAAAACCTGGTCTTTTTTTCATGGGGT
GGCTTCCGATCCACAAGCCCTTTGGAATTCGGAAGAGGCTTCTGAAATGCTTGAGGCAAGCCCAAG
AACCTGGAACCTAGCCCAGAAGGAGAAGAGCAGGAATCTTTGCTCAGCCTGATCAGCCTAGTCTGAG
TTCACATTTAGTATGATCCTTCTACCGGTCACTCCGGGAAATTCGAGAGCATCTTAGGGCCAGGGAG
AGTGCAGAGTCTGAGAGTTGGTCAATGCAGCTGCATACAATGTGAGCTGAAAATTGGTTCTGAAGAGTTT
GAAGAATTCCTTTTATAATGGACAAAATTCGGGATCCTTTTATTCATGAAATATCTAAAATTGCAATG
GGTATGAGAAGTCTTCAATTTACCCGAGATTTCAATTCGAGATTCAGGTGTTGTCTCACTTATTGAA
ACCTTGCTTAATATCCATCCTCTAGAGTTAGGACAAGTTTTTTGGAAAATATGATTCACATGGCTCCA
CCTTATCCAAATCTAAACATGATTGAGACATTCATATGTCAAGTGTGTGAGGAAACCCCTTGACATAGT
GTGGATTCCTTGAGCAGCTGACTGGAATAAGGATGCTTAGACACCTCACTATGACTATTGACTATCAC
ACACTGATTGCCAACTATATGTCGGGTTTCTCTCCTTATTAACACAGCCAATGCGAGAACGAAGTTT
CACGTTCTGAAAATGCTATTGAATTTGTCTGAAAATCTGCTGTGGCAAAAAAATTTCACTGCCCCAA
GCTCTTTCAATATTTGTGGTCTCTTTAACATAGAAGAGACAAAATGATAATATTTCAAATTTGTTATAAA
ATGTTTCAGAATATCAGTAACATTATAAAAAGTGGAAAGATGTCCTTAATTGATGATGATTTCACTCTT
GAGCCGCTTATTTCTGCATTTCTGAATTTGAGGAGTTAGCTAAGCAACTACAAGCCAAAATAGACAAC
CAAATGATCCTGAGGTGGGACAACAAAGT
ACGCGTACGCGGCCGCTCGAGCAGAACTCATCTCAGAAGAGGATCTGGCAGCAAATGATATCCTGGAT
TACAAGGATGACGACGATAAGGTTTAAACGGCCGGC
```

Protein Sequence: >Peptide sequence encoded by RC234944
Blue=ORF Red=Cloning site Green=Tag(s)

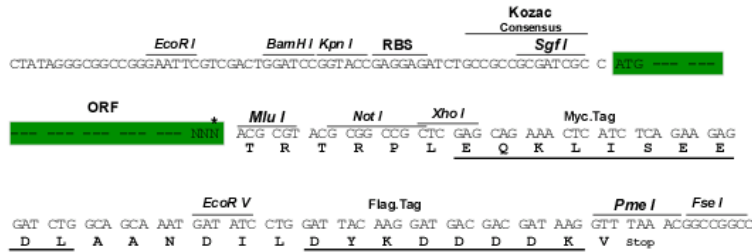
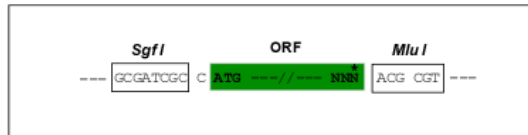
MTGAEIEPSAQAKPEKKAGEEVIAGPERENDVPLVVRPKVVRTQATTGARPKTETKSVPAARPKTEAQAM
SGARPKTEVQVMGGARPKTEAQGITGARPKTDARAVGGARSKTDAKAIPGARPKDEAQAQAWQSEFGTEA
VSQAEGVSQTNAVAVPLATAESGSVTKSKGLSMDRELNVNDAETFPGTQGQKGIQPFWGPGEETNMGSW
CYSRPRAREEASNESGFWSADETSTASSFWTGEETSVRSWPREEENTRSRHRRAKHQTNPRSRPRSKQEA
YVDSWSGSEDEASNPFVWVWVNTNLLFRPRVREEANIRSKLRNREDCFESESEDEFYKQSWVLPGEE
ANSRFRHRDKEDPNTALKLRAQKDVSDRVKQEPREFEVEVIIGSWFWAEKEASLEGGASAIQCESEPGTE
EGAIGGSAYWAEKSSLGAVAREEAKPESEEEAIFGSWFWRDEACFDLNPVYKVSDFRDAEELN
ASSRPQTWDEVTVEFKPGLFHVGFRSTSPFGIPEEASEMLEAKPKNLELSPEGEEQESLLQPDQPSPE
FTFYQDPSYRSVREIREHLRARESAESESWSCSCIQCEKIGSEEFEEFLLMDKIRDPFIEISKIAM
GMRASQFTRDFIRDSGVVSLIETLLNYPSSRVTSFLENMIHMAPPYPNLNMIETFCQVCEETLAHS
VDSLEQLTGIRMLRHLTMTIDYHTLIANYMSGFLSLLTTANARTKFHVLKMLLNLSENPAVAKKLFSAK
ALSIFVGLFNIEETNDNIQIVIKMFQNIISNIKSGKMSLIDDDFSLEPLISAFREFEELAKQLQAQIDN
QNDPEVGQQS
TRTRPLEQKLISEEDLAANDILDYKDDDDKV

Chromatograms: https://cdn.origene.com/chromatograms/mk6692_b11.zip

Restriction Sites: Sgfl-Mlul

Cloning Scheme:

Cloning sites used for ORF Shuttling:



* The last codon before the Stop codon of the ORF

ACCN: NM_001199818

ORF Size: 2514 bp

OTI Disclaimer: The molecular sequence of this clone aligns with the gene accession number as a point of reference only. However, individual transcript sequences of the same gene can differ through naturally occurring variations (e.g. polymorphisms), each with its own valid existence. This clone is substantially in agreement with the reference, but a complete review of all prevailing variants is recommended prior to use. [More info](#)
OTI Annotation: This clone was engineered to express the complete ORF with an expression tag. Expression varies depending on the nature of the gene.

Components: The ORF clone is ion-exchange column purified and shipped in a 2D barcoded Matrix tube containing 10ug of transfection-ready, dried plasmid DNA (reconstitute with 100 ul of water).

Reconstitution Method:

1. Centrifuge at 5,000xg for 5min.
2. Carefully open the tube and add 100ul of sterile water to dissolve the DNA.
3. Close the tube and incubate for 10 minutes at room temperature.
4. Briefly vortex the tube and then do a quick spin (less than 5000xg) to concentrate the liquid at the bottom.
5. Store the suspended plasmid at -20°C. The DNA is stable for at least one year from date of shipping when stored at -20°C.

RefSeq Size: 3940 bp

RefSeq ORF: 2517 bp

Locus ID: 100528062

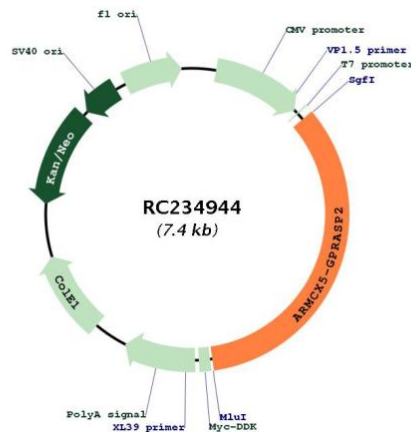
UniProt ID: [Q96D09](#)

Cytogenetics: Xq22.1

MW: 93.8 kDa

Gene Summary: This locus represents naturally occurring readthrough transcription among the adjacent armadillo repeat containing, X-linked 5 (ARMCX5), G protein-coupled receptor associated sorting proteins 1 and 2 (GPRASP1 and GPRASP2), basic helix-loop-helix family member b9 (BHLHB9), and long intergenic non-protein coding RNA 630 (LINC00630) genes on chromosome X. Transcripts may make use of multiple alternative promoters and polyadenylation signals in this region. Readthrough transcripts may produce proteins identical to the proteins encoded by GPRASP2 or BHLHB9. [provided by RefSeq, Apr 2017]

Product images:



Circular map for RC234944