

Product datasheet for **RC234942**

THBS3 (NM_001252608) Human Tagged ORF Clone

Product data:

Product Type:	Expression Plasmids
Product Name:	THBS3 (NM_001252608) Human Tagged ORF Clone
Tag:	Myc-DDK
Symbol:	THBS3
Synonyms:	TSP3
Mammalian Cell Selection:	Neomycin
Vector:	pCMV6-Entry (PS100001)
E. coli Selection:	Kanamycin (25 ug/mL)



[View online »](#)

ORF Nucleotide Sequence:

>RC234942 representing NM_001252608
 Red=Cloning site Blue=ORF Green=Tags(s)

TTTTGTAATACGACTCACTATAGGGCGGCCGGGAATTCGTCGACTGGATCCGGTACCGAGGAGATCTGCC
 GCC**CGGATCGCC**

ATGGAGACGCAGGAACCTCGGGGGCCCTGGCTCTTCTCCTCTTTGCTTTTTACATCTGCCAGTCAGG
 ATCTGCAGGTAATTGACCTGCTGACTGTGGGCGAGTCTCGGCAGATGGTAGCTGTGGCAGAGAAGATCCG
 GACAGCCTTGCTCACTGTGGGGACATCTACCTTTATCCACCTTCCGCCTGCCCCCAAGCAGGGTGGT
 GTCCTCTTTGGCCTCTATTCTCGCCAAGACAACACTCGATGGCTGGAGGCCTCTGTTGTAGGCAAGATCA
 ACAAAGTGACCAATGCACTGCACTCCATTCTAGGGGAGCAGACCAAGGCCTGGTCACCCAACCTCACCT
 CTTCAACCAGATCCTGGTGGAGCTGCGGGATGATACGAGACCAGGTGAAGGAAATGTCCTGTATCCGA
 AACACCATTATGGAGTGTGAGGTGTGCGGCTTCCATGAGCAGCGTTCCACTGCAGCCCCAATCCCTGCT
 TCCGAGGTGTGGACTGCATGGAAGTGTACGAGTACCCAGGCTACCCTGTGGGCCCTGCCCCCTGGCCT
 GCAGGGCAACGGCACCCACTGCAGTGACATCAATGAGTGTGCTCACGCTGACCCCTGTTTCCCGGGCTCC
 AGCTGCATCAACACCATGCCCGGCTTCCACTGTGAGGCCTGTCTCGAGGGTACAAGGGCACACAGGTGT
 CTGGTGTGGGCATTGACTATGCCCGGGCCAGAAACAGGTCTGCAATGACATCGATGAATGCAACAGTGG
 CAACAATGGTGGCTGTGACCCAACTCCATCTGCACCAACACTGTGGGCTCTTCAAGTGTGGTCCCTGC
 CGCCTGGGTTTCTGGGCAACCAGAGCCAGGGCTGCCTCCAGCCCGGACCTGCCACAGCCAGCCACACA
 GCCCTGCCACATCCATGCTCACTGTCTCTTTGAACGCAATGGTGCAGTGTCTGCCAGTGAACGTGGG
 CTGGGCTGGGAATGGGAACGTGTGTGGGACTGACACAGACATCGATGGCTACCCAGACCAAGCACTGCC
 TGCATGGACAACAACAACACTGCAACAGGACAACCTGCCTTTGACACCCAACCTGTGGCAGGAAGATG
 CTGATAATGATGGTGTGGGGACCAGTGTGATGATGCTGATGGGGATGGGATCAAGAATGTTGAGGA
 CAACTGCCCGCTGTTCCCAACAAGACCAGCAGAACTCAGATACAGATTCAATTTGGTGTGCCTGTGAC
 AATTGCCCAACGTTCCCAACAATGACCAGAAGGACACAGATGGCAATGGGAAGGAGATGCCTGTGACA
 ACGACGTGGATGGGGATGGCATCCCAATGGATTGGACAATTGCCCTAAAGTCCCAACCCACTACAGAC
 AGACAGGGATGAGGACGGGGTGGGAGATGCTTGCAGACGCTGCCCTGAAATGAGCAATCCTACCCAGACA
 GATGCAGACAGCGACCTGGTGGGGATGTCTGTGATACTAATGAAGACAGCGATGGGGATGGGCATCAGG
 ACACCAAGGACAACCTGCCACAGCTGCCAATAGCTCCAGCTGGACTCTGATAACGATGGACTTGGAGA
 TGAGTGTGATGGGGATGATGACAATGATGGCATCCAGATTATGTGCCTCCTGGTCCCGATAACTGCCGC
 CTGGTACCAATCCCAATCAGAAGGACTCAGATGGCAATGGCGTTGGTGTGTGTGTGAGGATGACTTTG
 ACAATGATGCTGTGGTCGACCCCTGGATGTGTGTCTGAAAGTGCAGAGGTAACGCTTACGGATTTTCG
 GGCTATCAGACCGTCTGCTGGATCCTGAGGGTGTGCTCAGATTGACCCAACTGGGTTGTGCTCAAC
 CAGGGCATGGAAATCGTTCAGACCATGAACAGTACCCTGGCTTGGCAGTTGGATACACGGCCTTCAATG
 GTGTGGACTTTGAAGGCACCTTCCATGTGAACACAGTACTGATGATGACTACCGAGGCTTTCTCTTCAG
 TTATCAAGACAGTGGCCGCTTCTACGTAGTCATGTGGAAGCAGACCGAGCAGACCTACTGGCAGGCTACA
 CCCTTCCGGGCGGTTGCCAGCCCGGCTGCAGCTCAAGGCAGTGACATCAGTGTCTGGCCAGGTGAGC
 ACCTCCGAAATGCCCTGTGGCATACTGGCCACACCCCTGATCAGGTACGACTGCTGTGGACAGCCACG
 AAATGTGGGCTGGCAGGACAAGACCTCCTATCGCTGGCAGCTTCTGCACCGCCTCAAGTTGGTACATT
 CGGGTGAAGCTCTATGAGGGACCCAGCTTGTGGCGGATTCTGGGGTGTGATGACACATCCATCCGAG
 GGGGGCTCTTGGTGTATTCTGCTTCTCCAAGAAAACATAATTTGGTCAATCTCCAGTATCGATGCAA
 TGACACAGTGCCTGAGGACTTTGAGCCATTCCGGAGGCAGCTGTCCAGGGAAGGGTG

ACGCGTACGCGGCCGCTCGAGCAGAACTCATCTCAGAAGAGGATCTGGCAGCAATGATATCCTGGATT
 ACAAGGATGACGACGATAAGGTTTAA

Protein Sequence: >RC234942 representing NM_001252608
 Red=Cloning site Green=Tags(s)

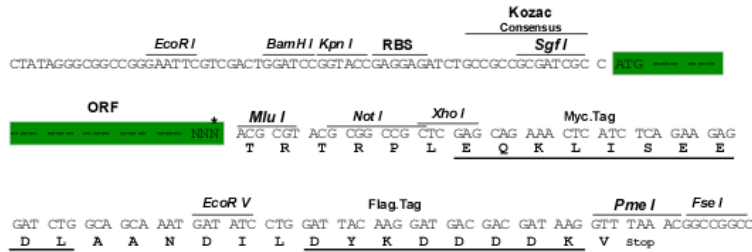
METQELRGALALLLCCFFTSASQDLQVIDLLTVGESRQMVAEAKIRTALLTAGDIYLLSTFRLPPKQGG
 VLFGLYSRQDNTRWLEASVVGKINKVTNALHSILGEQTKALVTQLTLFNQILVELRDDIRDQVKEMSLIR
 NTIMECQVCGFHEQRSHCSPNCFRQVDCMEVYEPGYRCGCPPGLQGNQTHCSDINECAHADPCFPGS
 SCINTMPGFHCEACPRGYKGTQVSGVGDIDYARASKQVCNDIDECNDGNNGGCDPNSICTNTVGSFKCGPC
 RLGFLGNQSQGCLPARTCHSPAHSPIHAHCLFERNGAVSCQCNVWAGNNGVCGTDDTDIDGYPDQALP
 CMDNKNKCKQDNCLLTPNSGQEDADNDGVGDQCDDDADGDGDKNVEDNCRLFPNKDQQNSDTSFGDACD
 NCPNVPNNDQKDTDGNQEGDADNDVDGDGIPNGLDNCVKVPNPLQTDREDEGVDACDSCPEMSNPTQT
 DADSDLVGDVCDTNEGSDGDGHQDTKDNCPLPNSQLSDNDGLGDECDGDDNDGIPDYVPPGPDNCR
 LVPNPNQKDSGNGVGDVCEDDFDNDAVDPLDVCPEAEVTLTDFRAYQTVVLDPEGDAQIDPNWVVLN
 QGMEIVQTMNSDPGLAVGYTAFNGVDFEGTFHVNTVTDDDYAGFLFSYQDSGRFYVVMWKQTEQTYWQAT
 PFRAVAQPLQLKAVTSVSGPGEHLRNALWHTGHTPDQVRLWTDPRNVGWRDQTSYRWQLLHRPQVGYI
 RVKLYEGPQLVADSGVIIDTSMRGGRLGVFCFSQENIIWSNLQYRCNDTVPEDFEPFRRQLLQGRV

TRTRPLEQKLISEEDLAANDILDYKDDDDKV

Restriction Sites: Sgfl-Mlul

Cloning Scheme:

Cloning sites used for ORF Shuttling:



* The last codon before the Stop codon of the ORF

ACCN: NM_001252608

ORF Size: 2508 bp

OTI Disclaimer: The molecular sequence of this clone aligns with the gene accession number as a point of reference only. However, individual transcript sequences of the same gene can differ through naturally occurring variations (e.g. polymorphisms), each with its own valid existence. This clone is substantially in agreement with the reference, but a complete review of all prevailing variants is recommended prior to use. [More info](#)
OTI Annotation: This clone was engineered to express the complete ORF with an expression tag. Expression varies depending on the nature of the gene.

Components: The ORF clone is ion-exchange column purified and shipped in a 2D barcoded Matrix tube containing 10ug of transfection-ready, dried plasmid DNA (reconstitute with 100 ul of water).

Reconstitution Method:

1. Centrifuge at 5,000xg for 5min.
2. Carefully open the tube and add 100ul of sterile water to dissolve the DNA.
3. Close the tube and incubate for 10 minutes at room temperature.
4. Briefly vortex the tube and then do a quick spin (less than 5000xg) to concentrate the liquid at the bottom.
5. Store the suspended plasmid at -20°C. The DNA is stable for at least one year from date of shipping when stored at -20°C.

RefSeq: [NM_001252608.2](#)

RefSeq Size: 2891 bp

RefSeq ORF: 2511 bp

Locus ID: 7059

UniProt ID: [P49746](#)

Cytogenetics: 1q22

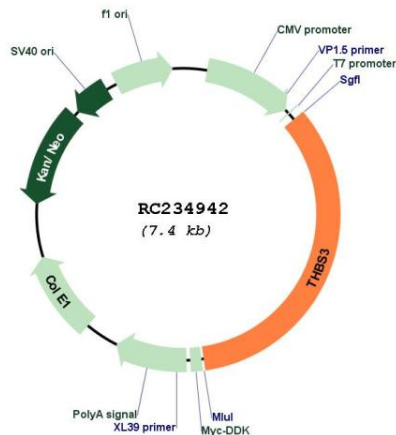
Protein Families: Druggable Genome

Protein Pathways: ECM-receptor interaction, Focal adhesion, TGF-beta signaling pathway

MW: 91.7 kDa

Gene Summary: The protein encoded by this gene belongs to the thrombospondin family. Thrombospondin family members are adhesive glycoproteins that mediate cell-to-cell and cell-to-matrix interactions. This protein forms a pentameric molecule linked by a single disulfide bond. This gene shares a common promoter with metaxin 1. Alternate splicing results in coding and non-coding transcript variants. [provided by RefSeq, Nov 2011]

Product images:



Circular map for RC234942