

## Product datasheet for **RC234925**

### AP180 (SNAP91) (NM\_001256717) Human Tagged ORF Clone

#### Product data:

Product Type:	Expression Plasmids
Product Name:	AP180 (SNAP91) (NM_001256717) Human Tagged ORF Clone
Tag:	Myc-DDK
Symbol:	AP180
Synonyms:	AP180; CALM
Mammalian Cell Selection:	Neomycin
Vector:	pCMV6-Entry (PS100001)
E. coli Selection:	Kanamycin (25 ug/mL)



[View online »](#)

**ORF Nucleotide  
Sequence:**

>RC234925 representing NM\_001256717  
 Red=Cloning site Blue=ORF Green=Tags(s)

TTTTGTAATACGACTCACTATAGGGCGGCCGGAATTCGTCGACTGGATCCGGTACCGAGGAGATCTGCC  
 GCC**CGGATCGCC**

ATGAGGGCGTTCAAGAATAATAACAATTTGATCCAGGCTACCAACGAGACCAATGTTAATATTCCTCAGA  
 TGGCCGACACTCTCTTTGAGCGGCAACAACAGTAGCTGGTGGTTGTGTTAAGGCTTTAGTGACAAC  
 ACATCATCTCATGGTGCATGAAATGAGAGATTTATTCAATATTTGGCTTCTAGAATACTACTATTCAAT  
 CTCAGCAATTTTTGGACAAAAGTGGATCCCATGGTTATGATATGTCTACCTTCATAAGGCGCTATAGTA  
 GATATTTGAATGAAAAGGCTTTTTCTTACAGACAGATGGCCTTTGATTTTCCAGGGTGAAGAAAGGGGC  
 CGATGGTGAATGAGGACAATGGCTCCCGAAAAGCTGCTAAAGAGTATGCCAATACTACAGGACAAATT  
 GATGCACTGCTTGAATTTGATGTGCATCCAAATGAACTAACAATGGTGTATAAATGCAGCATTTATGC  
 TTCTTTCAAAGATCTTATCAAATTTTTGCTTGTACAATGATGGTGTATTAACCTACTCGAAAAGTT  
 TTTTGAATGAAGAAAGGACAATGTAAGATGCTCTAGAAATTTACAAACGATTTCTAACTAGAATGACA  
 CGAGTGTCTGAATTTCTCAAGTTGCAGAGCAAGTTGGTATTGATAAAGGTGACATTCCTGACCTCACAC  
 AGGCTCCCAGCAGTCTTATGGAGACGCTTGAACAGCATCTAAATACATTAGAAGGAAAGAAACCTGGAAA  
 CAAATCTGGTGTCCCTCTCCATTAAGTAAGTCTTCTCCAGCCACAACCTGTTACGCTCCTAATTCTACA  
 CCAGCTAAAACCTATTGACACATCCCCACCGTTGATTTATTTGCAACTGCATCTGCGGCTGTCCCAGTCA  
 GCACTTCTAAACCATCTAGTGATCTCCTGGACCTCCAGCCAGACTTTTCTCTGGAGGGGACGACGAGC  
 CGCAGCACCAGCACCACCACCTGCTGGAGGAGCCACTGCATGGGGAGACCTTTTGGGAGAGGATTCT  
 TTGGCTGCACTTTCTCTGTTCCCTCTGAAGCACAGATTCAGATCCATTTGCACCAGAACCTACCCCTC  
 TACTACAACCTGCTGAAATTTGCAACTGCCTCAGCTTCTGCCTCCACTACTACAACCTGTTACTGCTGC  
 TGCTGAAGTGGATCTCTTTGGAGATGCCTTTGCAGCTTCTCCTGGGGAGGCCCTGCAGCATCCGAAGGG  
 GCCGCCGACCCAGCTACCCCAACCCCTGTAGCAGCAGCACTTGATGCATGTTTCAGGAAATGACCCCTTTG  
 CCCCGTCTGAAGGTAGTGACAGAGGCTGCACCTGAGCTGGACCTCTTTGCAATGAAGCCACCTGAGACCAG  
 TGTTCTGTAGTTACCCCTACAGCTAGCACAGCCCTCCAGTTCCCGCAACTGCTCCTTCTCCTGCTCCT  
 GCCGTTGACGCTGCTGCTGCCACTACTGCTGCCACCGCCGCTGCCACCACCTACCACCACCTCCG  
 CTGCCACCGCCACCACTGCTCCTCCTGCTTAGATATCTTTGGTATGCTTTCTCCTCTCCACCACAAGG  
 GGCCTCTCCTGTGCTGAGAGTTCTCTCACTGCTGACCTCTTATCTGATGCATTTGGAAGTAGTGTCTCT  
 GAACCCCAACCTGCATCTCAGGCTGCTTCTAGTTCATCAGCATCGGCAGACCTACTAGCTGGATTTGGGG  
 GTTCTTTTCATGGCGCCTTCCCCATCTCCAGTGACTCCAGCTCAGAATAACCTGCTACAGCCCAATTTTGA  
 GGCAGCTTTTGGGACAACGCCTTCAACTTCCAGCAGCAGCTCCTTTGATCCATCAGTGTTTATGATGTTCTA  
 GGTGATCTTTTATGCAACCATGGCACCAGCTGGGCAGCCTGCACCTGTCTCAATGGTACCACCCAGTC  
 CTGCAATGGCAGCCAGCAAAAGCCCTTGGAAAGTATCTTGATTCATCTCTTGCCAGCTTAGTAGGCAATCT  
 TGGAAATTTCTGGTACCACAACAAAAAGGGAGATCTTCAAGTGAATGCTGGAGAGAAAAAGTTGACTGGT  
 GGAGCCAACTGGCAGCCTAAAGTAGCTCCAGCAACCTGGTCCAGCAGGCGTTCCACCAAGTGCACCTTTGC  
 AAGGAGCTGTACCTCAACCAAGTTCAGTTCCTCCTGTTGCCGGGGCCCCATCGTTGGACAACCTGGAGC  
 AGGATTTGGAATGCCTCCTGCTGGGACAGGCATGCCATGATGCCTCAGCAGCGGTGATGTTTGCACAG  
 CCCATGATGAGGCCCCCTTTGGAGCTGCCGCTGTACCTGGCACGCAGCTTTCTCCAAGCCCTACACCTG  
 CCAGTCAGAGTCCCAAGAAACCTCCAGCAAGGACCCATTAGCGGATCTTAACATCAAGGATTTCTTG

**ACGCGT**ACGCGGCCGCTCGAGCAGAACTCATCTCAGAAGAGGATCTGGCAGCAATGATATCCTGGATT  
 ACAAGGATGACGACGATAAGGTTTAA

**Protein Sequence:** >RC234925 representing NM\_001256717  
 Red=Cloning site Green=Tags(s)

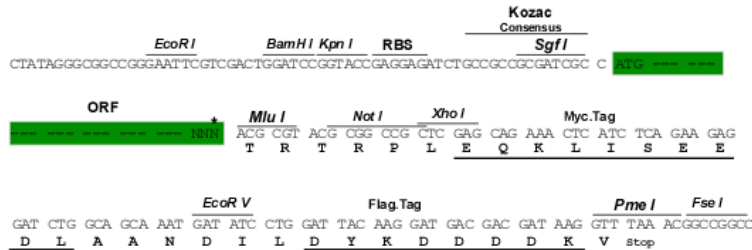
MRAFKNNNNLIQATNETNVNIPQMADTLFERATNSSWVVVKALVTTHLMVHGNERFIQYLASRNTLFN  
 LSNFLDKSGSHGYDMSTFIRRYRYLNEKAFSYRQMAFDFAFVKKGADGVMRTMAPEKLLKSMPIIQGQI  
 DALLEFDVHPNELTNGVINAAFMLLFKDLIKLFACYNDGVINLLEKFFEMKKGQCKDALEIYKRFLTRMT  
 RVSEFLKVAEQVGIDKGDIPDLTQAPSSLMETLEQHLNLTLEGKKPGNKSGAPSLSKSSPATTVTSPNST  
 PAKTIDTSPPVDFATASAAVPVSTSKPSSDLLDLQPDFSSGGAAAAAPAPPPAGGATAWGDLGDS  
 LAALSSVPSEAQISDPFAPEPTPPTTTAEIATASASASTTTTAVTAEVDFGDAFAASPGEAASEG  
 AAAPATPTPVAALDACSGNDPFAPSEGSAAPELDFAMKPPETSVPVVTPTASTAPPVPATAPSPAP  
 AVAAAAATTAATAAATTTTTSAATATTAPPALDIFGDAFSSPPQGASPVPESSLTADLLSDFGSSAS  
 EPQPASQAASSSSASADLLAGFGGSFMAPSPSPVTPAQNNLLQPNFEAAFGTTTPSTSSSSFDPSVFDGL  
 GDLLMPTMAPAGQPAPVSMVPPSPAMAASKALGSDLDSSLASLVGNLGISGTTTTKKGDLQWNAGEKKLTG  
 GANWQPKVAPATWSAGVPPSAPLQGAVPPTSSVPPVAGAPSVGQPGAGFGMPAGTGMPMPQPPVMFAQ  
 PMMRPPFGAAAVPGTQLSPSPTASQSPKKPPAKDPLADLNIKDFL

TRTRPLEQKLI SEEDLAANDILDYKDDDDKV

**Restriction Sites:** Sgfl-Mlul

**Cloning Scheme:**

Cloning sites used for ORF Shutting:



\* The last codon before the Stop codon of the ORF

**ACCN:** NM\_001256717

**ORF Size:** 2448 bp

**OTI Disclaimer:** The molecular sequence of this clone aligns with the gene accession number as a point of reference only. However, individual transcript sequences of the same gene can differ through naturally occurring variations (e.g. polymorphisms), each with its own valid existence. This clone is substantially in agreement with the reference, but a complete review of all prevailing variants is recommended prior to use. [More info](#)
**OTI Annotation:** This clone was engineered to express the complete ORF with an expression tag. Expression varies depending on the nature of the gene.

**Components:** The ORF clone is ion-exchange column purified and shipped in a 2D barcoded Matrix tube containing 10ug of transfection-ready, dried plasmid DNA (reconstitute with 100 ul of water).

**Reconstitution Method:**

1. Centrifuge at 5,000xg for 5min.
2. Carefully open the tube and add 100ul of sterile water to dissolve the DNA.
3. Close the tube and incubate for 10 minutes at room temperature.
4. Briefly vortex the tube and then do a quick spin (less than 5000xg) to concentrate the liquid at the bottom.
5. Store the suspended plasmid at -20°C. The DNA is stable for at least one year from date of shipping when stored at -20°C.

**RefSeq:** [NM\\_001256717.1](#), [NP\\_001243646.1](#)

**RefSeq Size:** 4529 bp

**RefSeq ORF:** 2451 bp

**Locus ID:** 9892

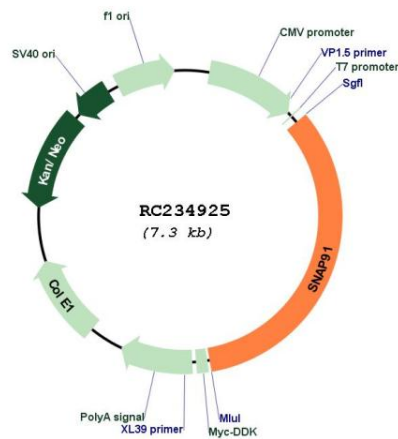
**UniProt ID:** [O60641](#)

**Cytogenetics:** 6q14.2

**MW:** 83.8 kDa

**Gene Summary:** Adaptins are components of the adapter complexes which link clathrin to receptors in coated vesicles. Clathrin-associated protein complexes are believed to interact with the cytoplasmic tails of membrane proteins, leading to their selection and concentration. Binding of AP180 to clathrin triskelia induces their assembly into 60-70 nm coats (By similarity).[UniProtKB/Swiss-Prot Function]

### Product images:



Circular map for RC234925