

## Product datasheet for **RC234913**

### CTAGE5 (MIA2) (NM\_001247989) Human Tagged ORF Clone

#### Product data:

Product Type:	Expression Plasmids
Product Name:	CTAGE5 (MIA2) (NM_001247989) Human Tagged ORF Clone
Tag:	Myc-DDK
Symbol:	CTAGE5
Synonyms:	CTAGE5; MEA6; MGEA; MGEA6; MGEA11; TALI
Mammalian Cell Selection:	Neomycin
Vector:	pCMV6-Entry (PS100001)
E. coli Selection:	Kanamycin (25 ug/mL)



[View online »](#)

**ORF Nucleotide Sequence:**

>RC234913 representing NM\_001247989  
 Red=Cloning site Blue=ORF Green=Tags(s)

TTTTGTAATACGACTCACTATAGGGCGGCCGGGAATTCGTGACTGGATCCGGTACCGAGGAGATCTGCC  
 GCC**CGCATCGCC**

ATGGAGGAGCCCGGGTTACCCCTCAACCGTATTTGGGGCTGCTCCTGGAGGAGCTACGCAGGGTTGTGG  
 CAGCACTGCCTGAAGGTATGAGACCAGATTCTAATCTTTATGGTTTTCCATGGGAATTGGTGATATGTGC  
 AGCTGTTGTTGGATTTTTGCTGTTCTCTTTTTTTGTGGAGAAGTTTTAGATCGTTAGGAGTCGGCTT  
 TATGTGGGACGAGAGAAAAAGCTTGCTCTAATGCTTTCTGGACTAATTGAAGAAAAAGTAACTACTTG  
 AAAAAATTAGCCTTGTTCAAAAAGAGTATGAAGGCTATGAAGTAGAGTCATCTTTAAAGGATGCCAGCTT  
 TGAGAAGGAGGCAACAGAACACAAAGTTGGAGGTAGAAAAATCAATGGCAACCTGTGAAAAGCTGAAC  
 AGGTCCAATTCTGAACCTGAGGATGAAATACTCTGTCTAGAAAAAGAGTTAAAAGAAGAGAAATCCAAAC  
 ATCTGAACAAGATGAATTGATGGCGGATATTTCAAAAAGGATACAGTCTCTAGAAGATGAGTCAAAATC  
 CCTCAAAATCACAAGTAGCTGAAGCCAAAATGACCTTCAAGATATTTCAAATGAATGAAGAACGACTGAAG  
 ATAGCAATAAAAAGATGCTTTGAATGAAAATTCTCAACTTCAGGAAAGCCAGAAACAGCTTTTGCAAGAAG  
 CTGAAGTATGAAAGAACAAGTGAGTGAACCTAATAAACAGAAAGTAACATTTGAAGACTCCAAAGTACA  
 TGCAGAACAAGTTCTAAATGATAAAGAAAGTCACATCAAGACTCTGACTGAACGCTTGTTAAAGATGAAA  
 GATTGGGCTGCTATGCTTGGAGAAGACATAACGGATGATGATAACTTGGAAATAGAAATGAACAGTGAAT  
 CGGAAAATGGTGCCTACTTAGATAATCCTCCAAAAGGAGCTTTGAAGAACTGATTCATGCTGCTAAGTT  
 AAATGCTCTTTAAAAACCTTAGAAGGAGAAAGAAACCAATTTATATTCAGTTGCTGAAGTTGATAAA  
 ACAAGGAGAGCTTACAGAGCATATTAATAATCTTCAGACTGAACAAGCATCTTTGAGTCAGAAAAACA  
 CACATTTTGAAAATGAGAATCAGAAGCTCAACAGAAACTTAAAGTAATGACTGAATATATCAAGAAAA  
 TGAATGAAACTCCACAGGAAATTAACAGTAGAGGAAAATATCGGTTAGAGAAAAGAGAAACTTTCT  
 AAAGTAGATGAAAAGATCAGCCATGCCACTGAAGAGCTGGAGACCTATAGAAAGCGAGCCAAAGATCTTG  
 AAGAAGAATTGGAGAGAACTATTCATTCTATCAAGGGCAGATATTTCCCATGAGAAAAAGCACATGA  
 TAATTGGTTGGCAGCTCGGAATGCTGAAAGAACTCAATGATTTAAGGAAAGAAAATGCTCACAACAGA  
 CAAAAATTAAGTAAACAGAGCTTAAATTTGAACTTTTAGAAAAAGATCCTTATGCACTCGATGTTCCAA  
 ATACAGCATTGGCAGAGAGCATTCCCATATGGTCCCTCACCATTGGGTTGGCCTTCATCTGAAACAAG  
 AGCTTTTCTCTCCTCCAACCTTTGTTGGAGGGTCCACTCAGACTCTCACCTTTGCTTCCAGGGGGAGGA  
 GGAAGAGGCTCAGAGGCCAGGAATCCTCTGGACCATCAGATTACCAATGAAAGAGGAGAAATCAAGCT  
 GTGATAGGTTAACCGATCCTCATAGGGCTCCCTCTGACTGGGTCTCTGTACCTCCATGGGACCAGGA  
 CCGTAGGATGATGTTTCCCGCCAGGACAATCATATCCTGATTGAGCCCTTCCACAAAAGGCAAGAC  
 AGATTTTGTCTAATTCTGGTAGACTGTCTGGACCAGCAGAACTCAGAAGTTTTAATATGCCTTCTTTGG  
 ATAAAAATGGATGGGTCAATGCCTTCAGAAATGGAATCCAGTAGAAATGATACCAAGATGATCTTGGTAA  
 TTTAAATGTGCCTGATTCATCTCCTGCTGAAAATGAAGCCACTGGCCTGGCTTTGTTCTCCACCT  
 CTTGCTCCAATCAGAGGTCCATTGTTCCAGTGGATGCAAGAGGCCATCTTGAGAAGAGGACCTCCTT  
 TCCCCCACCTCCTCCAGGAGCCATGTTGGAGCTTCTCGAGATTATTTCCACCAGGGGATTTCCACAGG  
 TCCACCACCTGCTCCATTTGCAATGAGAAATGTCTATCCACCAGGGGTTTTCTCCTTACCTTCCCCCA  
 AGACCTGGATTTTTCCCCCACCCACATTCTGAAGGTAGAAGTGAGTTCCCCTCAGGTTTGATTCCAC  
 CTTCAAATGAGCTGCTACTGAACATCCAGAACCACAGCAAGAAACC

**ACGCGT**ACGCGGCCGCTCGAGCAGAAACTCATCTCAGAAGAGGATCTGGCAGCAATGATATCCTGGATT  
 ACAAGGATGACGACGATAAGGTTTAA

**Protein Sequence:** >RC234913 representing NM\_001247989  
Red=Cloning site Green=Tags(s)

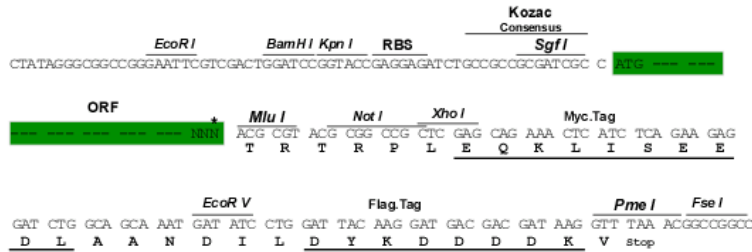
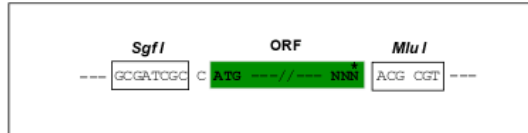
MEEPGVTPQPYLGLLLEELRRVVAALPEGMRPDSNLYGFPWELVICA AVVGVFFAVLFFLWRSFRSVRSRL  
 YVGREKKLALML SGLIEEKSKLLEKFSLVQKEYEGYEVESSLK DASFKEATEAQSLEVENQMATCEKLN  
 RSNSELEDEILCLEKELKEEKSKHSEQDEL MADISKRIQSLEDESKSLKSQVAEAKMTFKIFQMNEERLK  
 IAIKDALNENSQLQESQKQLLQEA EVWKEQVSELNKQKVT FEDSKVHAEQVLNDKESHIKTLTERLLKMK  
 DWAAMLGEDITDDD NLELEMNSESENGAYLDNPPKGALKKLIHAAKLNASLKTLEGERNQIYIQLSEVDK  
 TKEELTEHIKNLQTEQASLQSENTHFENENQKLQKQKLVMTELYQENEMKLRKLTVEENYRLEKEEKLS  
 KVDEKISHATEELETYRKRKADLEEEELERTIHSYQGQIISHEKKAHDNWLAA RNAERNLNDLRKENAHR  
 QKLTETELKFELLEKDPYALDVPNTAFGREHSPYGPSPLGWPSSETRAFLSPPTLLEGPLRLSPLLPGGG  
 GRGSRGPGNPLDHQITNERGESSCDRLTDPHRAPSDTGSLSPPWDQDRRMMFPPPGQSYPDALPPQRQD  
 RFCNSGRLSGPAELRSFNMPSLDKMDGSMPSSESSRNDTKDDLGNLNVDPSSLPAENEATGPGFVPPP  
 LAPIRGPLFPVDARGPFLRRGPPFPPPPGAMFGASRDYFPPGDFPGPPPAPFAMRNVYPPRGFPPYLP  
 RPFPPPPPHSEGRSEFP SGLIPPSNEPATEHPEPQQET

TRTRPLEQKLI SEEDLAANDILDYKDDDDKV

**Restriction Sites:** Sgfl-MluI

**Cloning Scheme:**

Cloning sites used for ORF Shuttling:



\* The last codon before the Stop codon of the ORF

**ACCN:** NM\_001247989

**ORF Size:** 2427 bp

**OTI Disclaimer:** The molecular sequence of this clone aligns with the gene accession number as a point of reference only. However, individual transcript sequences of the same gene can differ through naturally occurring variations (e.g. polymorphisms), each with its own valid existence. This clone is substantially in agreement with the reference, but a complete review of all prevailing variants is recommended prior to use. [More info](#)
**OTI Annotation:** This clone was engineered to express the complete ORF with an expression tag. Expression varies depending on the nature of the gene.

**Components:** The ORF clone is ion-exchange column purified and shipped in a 2D barcoded Matrix tube containing 10ug of transfection-ready, dried plasmid DNA (reconstitute with 100 ul of water).

**Reconstitution Method:**

1. Centrifuge at 5,000xg for 5min.
2. Carefully open the tube and add 100ul of sterile water to dissolve the DNA.
3. Close the tube and incubate for 10 minutes at room temperature.
4. Briefly vortex the tube and then do a quick spin (less than 5000xg) to concentrate the liquid at the bottom.
5. Store the suspended plasmid at -20°C. The DNA is stable for at least one year from date of shipping when stored at -20°C.

**RefSeq:** [NM\\_001247989.1](#), [NP\\_001234918.1](#)

**RefSeq Size:** 3695 bp

**RefSeq ORF:** 2430 bp

**Locus ID:** 4253

**UniProt ID:** [Q96PC5](#)

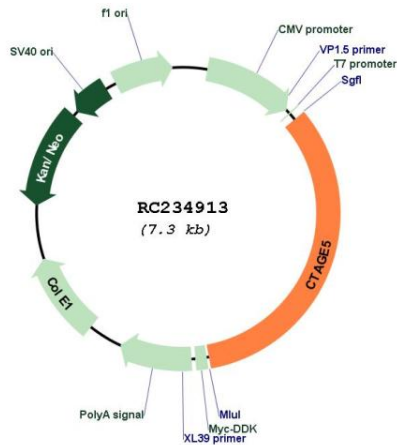
**Cytogenetics:** 14q21.1

**Protein Families:** Transmembrane

**MW:** 92 kDa

**Gene Summary:** This gene encodes s receptor in the endoplasmic reticulum, which plays a role in the export of large pre-chylomicrons and pre-very low density lipoproteins (pre-VLDLs). Three major classes of transcripts are generated from this gene- melanoma inhibitory activity 2-specific transcripts, cTAGE family member 5-specific transcripts and transcripts that include exons from both these transcript species (TANGO1-like or TALI). Additionally, alternative splicing in these transcripts results in multiple transcript variants encoding multiple isoforms. [provided by RefSeq, Sep 2016]

**Product images:**



Circular map for RC234913