

## Product datasheet for **RC234903**

### ZNF43 (NM\_001256648) Human Tagged ORF Clone

#### Product data:

Product Type:	Expression Plasmids
Product Name:	ZNF43 (NM_001256648) Human Tagged ORF Clone
Tag:	Myc-DDK
Symbol:	ZNF43
Synonyms:	HTF6; KOX27; ZNF39L1
Mammalian Cell Selection:	Neomycin
Vector:	pCMV6-Entry (PS100001)
E. coli Selection:	Kanamycin (25 ug/mL)



[View online »](#)

**ORF Nucleotide Sequence:**

>RC234903 representing NM\_001256648  
 Red=Cloning site Blue=ORF Green=Tags(s)

TTTTGTAATACGACTCACTATAGGGCGGCCGGGAATTCGTCGACTGGATCCGGTACCGAGGAGATCTGCC  
 GCC**CGCATCGCC**

ATGGATGTGGCCATAGAATTCGTCTGGAGGAGTGGCAATGCCTGGACATTGCACAGCAGAAATTTATATA  
 GGAATGTGATGTTAGAGAACTACAGAACTGGTCTTCTGGGATTGCTGTCTTAAGCCAGACCTGAT  
 CACCTGTCTGGAGCAAGAAAAAGAGCCTTGGGAGCCTATGAGGAGACATGAAATGGTAGCCAAACCCCA  
 GTTATGTGTTCTCATTTTACCCAAGACTTTTGGCCAGAGCAGCATATAAAAGATCCTTTCCAAAAAGCGA  
 CACTGAGAAGATATAAAACTGTGAACATAAAAAATGTACATTTAAAAAAGACCATAAAAGTGTGGATGA  
 GTGTAAGGTGCACAGAGGAGTTATAATGGATTTAACCAATGTTTGCCAGCTACCCAGAGCAAAATATTT  
 CTATTTGATAAAATGTGTGAAAGCCTTTCATAAAATTTCAAATTCAAACAGACATAAGATAAGCCACTG  
 AAAAAAACTTTTCAAATGCAAAGAATGTGGCAAATCATTTTGCATGCTCCACATCTAGCTCAACATAA  
 AATAATTCATACCAGAGTGAATTTCTGCAAATGTGAAAAATGTGGAAAAGCTTTTAACTGCCCTTCAATC  
 ATCACTAAACATAAGAGAATTAATACTGGAGAGAAACCCCTACACATGTGAAGAATGTGGCAAAGCTTTA  
 ATGGTCTCACGCCCTTACTACACATAAAAAAATTTACTAGATACAACTCTACAAATGTGAAGAATG  
 TGGCAAAGCTTTTAAAGTCTCAATCCTTACTACCCATAAGATAATTCGCACTGGAGAGAAAATTTCTAC  
 AAATGTAAAGAATGTGCCAAAGCTTTTAAACCAATCCTCAAACCTTACTGAACATAAGAAAATTCATCCTG  
 GAGAGAAACCTTACAAATGTGAAGAATGTGGCAAAGCCTTTAACTGGCCCTCAACTTACTAAACATAA  
 GAGAATTCATACTGGAGAGAAACCCCTACACATGTGAAGAATGTGGCAAAGCCTTTAAACAGTTCTCAAAC  
 CTTACTACACATAAGAGAATCCATACTGCAGAGAAATTCATAAAATGTACAGAATGTGGTGAAGCTTTTA  
 GCCGGTCTCAAACCTTACTAAACATAAGAAAATTCATACTGAAAAGAAAACCCCTACAAATGTGAAGAATG  
 TGGCAAAGCTTTTAAAGTGGTCTTCAAAGCTTACTGAACATAAGTTAACTCATACTGGAGAGAAACCCCTAC  
 AAATGTGAAGAATGTGGCAAAGCCTTTAACTGGCCCTCAACCTTACTAAACATAACAGAATTCATACTG  
 GAGAGAAACCTACAAATGTGAAGTATGTGGCAAAGCCTTTAAACAGTTCTCAAACCTTACTACACATAA  
 GAGAATTCATACTGCAGAAAAACCGTACAAATGTGAAGAATGTGGCAAAGCTTTTAAAGCTTCTCAAAC  
 CTTACTAAACATAAGAAAATTCACATTGAAAAGAAAACCCCTACAAATGTGAAGAATGTGGCAAAGCTTTTA  
 AGTGGTCTCAAAGCTTACTGAACATAAGATAACTCATACTGGAGAGAAACCCCTACAAATGTGAAGAATG  
 TGGCAAAGCTTTTAAACATTTCTCAATCCTTACCAAACATAAGAGGATTCATACTGGAGAGAAACCCCTAC  
 AAGTGTGAAGAATGTGGCAAAGCTTTTACCAATCCTCAAACCTTACTACACATAAGAAAATTCATACTG  
 GAGAGAAATTCACAAATGTGAAGAATGTGGCAAAGCTTTTACCAATCTCAAACCTTACTACACATAA  
 AAAAAATTCATACTGGAGGAAAACCCCTACAAATGTGAAGAATGTGGCAAAGCTTTTAAACAGTTCTCAACT  
 CTTACTAAACATAAGATAATTCACACTGAGGAGAAAACCCCTACAAATGTGAAGAATGTGGCAAAGCTTTTA  
 AGTGGTCTCAAACCTTACTAAACATAAGATAATTCATACTGGAGAGAAACCCCTACAAATGTGAAGAATG  
 TGGCAAAGCTTTTAACTGTCTCAACCTTTCTACACATAAGATTATTCATACTGGAGAGAAACCCCTAC  
 AAATGTGAAAAATGTGGCAAAGCTTTTAAACGATCCTCAAACCTTATTGAACATAAGAAAATTCATACTG  
 GAGAGCAACCCCTACAAATGTGAAGAATGTGGCAAAGCATTAACTATTCTCACACCTTAATACACATAA  
 GAGAATTCATACTAAAGAGCAACCCCTACAAATGTAAAGAATGTGGCAAAGCTTTTCAACCAATATTCAAAC  
 CTTACTACACATAACAAAATTCATACTGGAGAGAACTCTACAAACCTGAAGATGTGACAGTGATTTTGA  
 CAACACCTCAAACCTTTTCAAACATAAAA

**ACGCGT**ACGCGGCCGCTCGAGCAGAACTCATCTCAGAAGAGGATCTGGCAGCAAATGATATCCTGGATT  
 ACAAGGATGACGACGATAAGGTTTAA

**Protein Sequence:** >RC234903 representing NM\_001256648  
Red=Cloning site Green=Tags(s)

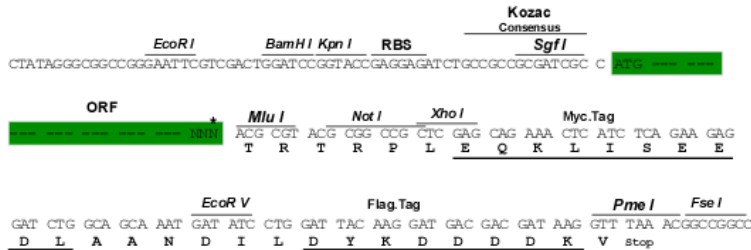
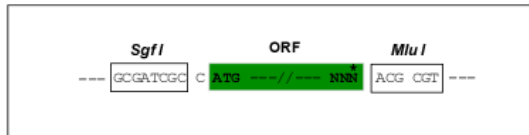
MDVAIEFCLEEWQCLDIAQQNL YRNVMLENYRNLVFLGIAVSKPDLITCLEQEKEPWPMRRHEMVAKPP  
VMCSHFTQDFWPEQHIKDPFQKATLRRYKNCEHKNVHLKGDHKSVDCEKVHRGGYNGFNQCLPATQSKIF  
LFDKCVKAFHKFSNSNRHKISHTEKCLKCKCEGKSFCLPHLAQHKKIHRVNFCKCEKCGKAFNCPSI  
ITKHKRINTGEKPYTCEECGKVFNWSSRLTTHKKNYTRYKLYKCEECGKAFNKSSILTTHKIIIRTGEKPY  
KKECAKAFNQSSNLTEHKKIHPGEKPYKCEECGKAFNWPSTLTCHKRIHTGEKPYTCEECGKAFNQFSN  
LTTHKRIHTAEKPYKTECGEAFSRSSNLTKHKKIHTTEKPYKCEECGKAFKWSKLTTEHKLTHTEKPY  
KCEECGKAFNWPSTLTCHKRIHTGEKPYKCEVCGKAFNQFSNLTTHKRIHTAEKPYKCEECGKAFSRSSN  
LTKHKKIHTIEKPYKCEECGKAFKWSKLTTEHKIHTTEKPYKCEECGKAFNHFSILTCHKRIHTGEKPY  
KCEECGKAFTQSSNLTTHKKIHTGEKPYKCEECGKAFTQSSNLTTHKKIHTGGKPYKCEECGKAFNQFST  
LTKHKKIHTTEKPYKCEECGKAFKWSSTLTCHKIHTTEKPYKCEECGKAFKLSSTLSTHKIHTTEKPY  
KCEKCGKAFNRSSNLIEHKKIHTGEQPYKCEECGKAFNYSSHLNTHKRIHTKEQPYKCEKCGKAFNQYSN  
LTTHNKIHTGEKLYKPEDVTVILTTPQTFSTNIK

TRTRPLEQKLI SEEDLAANDILDYKDDDDKV

**Restriction Sites:** Sgfl-MluI

**Cloning Scheme:**

Cloning sites used for ORF Shutting:



\* The last codon before the Stop codon of the ORF

**ACCN:** NM\_001256648

**ORF Size:** 2409 bp

**OTI Disclaimer:** The molecular sequence of this clone aligns with the gene accession number as a point of reference only. However, individual transcript sequences of the same gene can differ through naturally occurring variations (e.g. polymorphisms), each with its own valid existence. This clone is substantially in agreement with the reference, but a complete review of all prevailing variants is recommended prior to use. [More info](#)
**OTI Annotation:** This clone was engineered to express the complete ORF with an expression tag. Expression varies depending on the nature of the gene.

**Components:** The ORF clone is ion-exchange column purified and shipped in a 2D barcoded Matrix tube containing 10ug of transfection-ready, dried plasmid DNA (reconstitute with 100 ul of water).

**Reconstitution Method:**

1. Centrifuge at 5,000xg for 5min.
2. Carefully open the tube and add 100ul of sterile water to dissolve the DNA.
3. Close the tube and incubate for 10 minutes at room temperature.
4. Briefly vortex the tube and then do a quick spin (less than 5000xg) to concentrate the liquid at the bottom.
5. Store the suspended plasmid at -20°C. The DNA is stable for at least one year from date of shipping when stored at -20°C.

**RefSeq:** [NM\\_001256648.2](#)

**RefSeq Size:** 5771 bp

**RefSeq ORF:** 2412 bp

**Locus ID:** 7594

**UniProt ID:** [P17038](#)

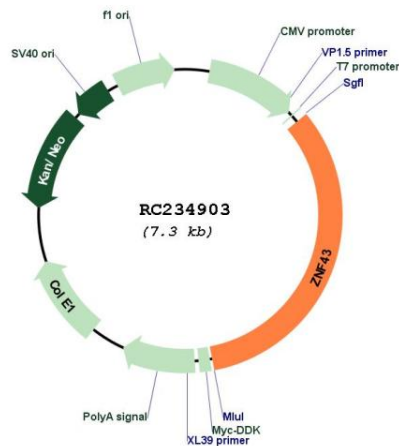
**Cytogenetics:** 19p12

**Protein Families:** Transcription Factors

**MW:** 93.9 kDa

**Gene Summary:** This gene belongs to the C2H2-type zinc finger gene family. The zinc finger proteins are involved in gene regulation and development, and are quite conserved throughout evolution. Like this gene product, a third of the zinc finger proteins containing C2H2 fingers also contain the KRAB domain, which has been found to be involved in protein-protein interactions. [provided by RefSeq, Jul 2008]

### Product images:



Circular map for RC234903