

## Product datasheet for **RC234891**

### ADAM15 (NM\_001261465) Human Tagged ORF Clone

#### Product data:

Product Type:	Expression Plasmids
Product Name:	ADAM15 (NM_001261465) Human Tagged ORF Clone
Tag:	Myc-DDK
Symbol:	ADAM15
Synonyms:	MDC15
Mammalian Cell Selection:	Neomycin
Vector:	pCMV6-Entry (PS100001)
E. coli Selection:	Kanamycin (25 ug/mL)



[View online »](#)

**ORF Nucleotide Sequence:**

>RC234891 representing NM\_001261465  
 Red=Cloning site Blue=ORF Green=Tags(s)

TTTTGTAATACGACTCACTATAGGGCGGCCGGAATTCGTCGACTGGATCCGGTACCGAGGAGATCTGCC  
 GCC**CGATCGCC**

ATGCGGCTGGCGTCTCTGGCCCTGGGGCTCTGGGCGGGCAGCCCTCTGCCTTCCTGGCCGCTCC  
 CAAATATAGGTGGCACTGAGGAGCAGCAGGCAGAGTCAGAGAAGGCCCGAGGGAGCCCTTGAGGCCCA  
 GGTCTTCAGGACGATCTCCAATTAGCCTCAAAAAGGTGCTTCAGACCAGTCTGCCTGAGCCCTGAGG  
 ATCAAGTTGGAGCTGGACGGTGACAGTCATATCCTGGAGCTGCTACAGAATAGGGAGTTGGTCCCAGGCC  
 GCCCAACCCTGGTGTGGTACCAGCCGATGGCACTCGGGTGGTCACTGAGGGACACACTTTGGAGAAGT  
 CTGCTACCAGGGAAGAGTGCGGGATATGCAGGCTCTGGGTGTCCATCTGCACCTGCTCTGGGCTCAGA  
 GGCTTGGTGGTCTGACCCAGAGAGAAGCTATACCTGGAGCAGGGGCTGGGGACCTCAGGGTCTC  
 CCATTATTCGCGAATCCAAGATCTCCACCTGCCAGGCCACACCTGTGCCCTGAGCTGGCGGGAATCTGT  
 ACACACTCAGAAGCCACCAGAGCACCCCTGGGACAGCGCCACATTCGCCGGAGGCGGGATGTGGTAA  
 GAGACCAAGACTGTGGAGTTGGTATTGTGGTGTACTCTCGGAGGCCGAAATACCGGACTTCCAGC  
 ACCTGCTAAACCCGACACTGGAAGTGGCCCTCTTGTGGACACATTCTTCGGGCCCTGAATGTACGAGT  
 GGCACTAGTGGGCTGGAGGCCTGGACCCAGCGTGACCTGGTGGAGATCAGCCAAACCCAGCTGTACC  
 CTCGAAAACCTTCTCCACTGGCGCAGGGCACATTTGCTGCCTCGATTGCCCATGACAGTGGCCAGCTGG  
 TGACTGGTACTTCTCTCTGGGCTACGGTGGCATGGCCATTGAGAACTCCATCTGTTCTCTGACTT  
 CTCAGGAGGTGTGAACATGGACCACTCCACCAGCATCTGGGAGTCGCCTCCTCCATAGCCCATGAGTTG  
 GGCCACAGCCTGGGCTGGACCATGATTTGCCTGGGAATAGCTGCCCTGTCCAGGTCCAGCCCCAGCCA  
 AGACCTGCATCATGGAGGCTCCACAGACTTCTACCAGGCTGAACCTCAGAACTGCAGCCGACGGGC  
 CCTGGAGAAAGCCCTCTGGATGGAATGGGACAGTGCCTCTTCGAACGGCTGCCTAGCCTACCCCTATG  
 GCTGCTTTCTGCGAAATATGTTTGTGGAGCGGGCAGCAGTGTGACTGTGGCTTCTGGATGACTGCG  
 TCGATCCCTGCTGTGATTCTTTGACCTGCCAGCTGAGGCCAGGTGCACAGTGTGCATCTGACGGACCCTG  
 TTGTCAAATGGCAGCTGCGCCGCTGGCTGGCAGTGTGCTCTACCAGAGGGGATTGTGACTTGCCT  
 GAATTCTGCCAGGAGACAGCTCCAGTGTCCCCTGATGTCAGCCTAGGGGATGGCGAGCCCTGCGCTG  
 GCGGGCAAGCTGTGTGCATGCACGGGCTTGTGCCTCTATGCCAGCAGTGCAGTCACTTTGGGGACC  
 TGGAGCCAGCCGCTGCGCCACTTTGCCTCCAGACAGCTAATACTCGGGGAAATGCTTTTGGGAGCTGT  
 GGGCGCAACCCAGTGGCAGTTATGTGCTGCACCCCTAGAGATGCCATTTGTGGGAGCTCCAGTGC  
 AGACAGGTAGGACCCAGCCTCTGCTGGGCTCCATCCGGGATCTACTCTGGGAGACAATAGATGTGAATGG  
 GACTGAGCTGAAGTGCAGCTGGGTGCACCTGGACTGGGCACTGATGTGGCCAGCCCTCTGACTCTG  
 CCTGGCACAGCCTGTGGCCCTGGCTGGTGTGATAGACCATCGATGCCAGCGTGTGGATCTCTGGGGG  
 CACAGGAATGTGAAGCAATGCCATGGACATGGGGTCTGTGACAGCAACAGGCACTGCTACTGTGAGGA  
 GGGCTGGGACCCCTGACTGCACCACTCAGCTCAAAGCAACAGCTCCCTGACCACAGGGCTGCTCCTC  
 AGCCTCCTGGTCTATTGGTCTGGTGTGCTTGGTGGCAGCTACTGGTACCGTGGCCGCTGCACACAG  
 GACTCTGCCAGCTCAAGGACCCACTGCCAGTACAGGCTAGTGTCTCAGCTTCCCGCCCCCTTCC  
 AGGCCGCTGCCGCTGACCCTGTGTCCAAGAGACTCCAGTCTCAGGGGCCAGCCAAGCCCCACCCCA  
 GGAAGCCACTGCCTGCCACCCAGGGCCGGTGGCCATCGGGTACCTGCCCGGCCAGGGGCTGGAAT  
 CCCGCCCC

**ACGCGT**ACGCGGCGCTCGAGCAGAACTCATCTCAGAAGAGGATCTGGCAGCAAATGATATCTGGATT  
 ACAAGGATGACGACGATAAGGTTTAA

**Protein Sequence:** >RC234891 representing NM\_001261465  
Red=Cloning site Green=Tags(s)

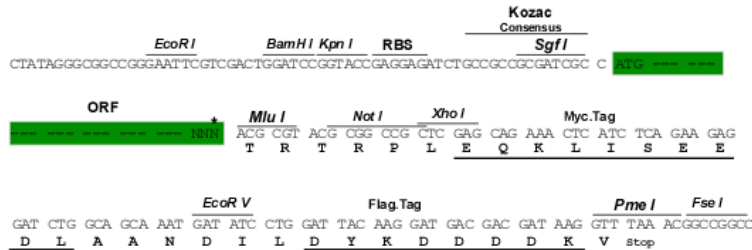
MRLALLWALGLLGAGSPLPSWPLPNIGGTEEQQAESEKAPREPLEPQVLQDDLPI SLKKVLQTSLEPLR  
IKLELDGDSHILELLQNRELVGRPTLVWYQPDGTRVVSEGHTLENCYQGRVRYAGSWVSICTCSGLR  
GLVVLTPERSYTLQGGDLQGPPIISRIQDLHLPGHTCALSWRESVHTQKPEHPLGQRHIRRRRDVVT  
ETKTVELVIVADHSEAQKYRDFQHLLNRTLEVALLLDFFRPLNVRVALVGLEAWTQRDLVEISNPVAVT  
LENFLHWRRRAHLLPRLPHDSAQLVTGTSFSGPTVGMAIQNSICSPDFSGGVNMDHSTSILGVASSIAHEL  
GHSLGLDHDLPGNPCPCPGPAPAKTCIMEASTDFLPGLNFSNCSRRALEKALLDGMGSCLFERLPSPM  
AAF CGNMFVEPGEQCDCGFLDDCVDPCCDSLTCQLRPGAQASDGPCCQNCQLRPSGWQCRPTRGDCDLP  
EFCPGDSSQCPPDVSLGDGEP CAGGQAVCMHGRCASYAQQCQSLWPGAQPAAPLCLQTANTRGNAFGSC  
GRNPSGSYVSCTPRDAICGQLQCQTGR TQPLLSIRDLLWETIDVNGTELNCSWVHLDLGS DVAQPLLTL  
PGTACGPLVCIDHRCQRVDLLGAQE CRSKCHGHGVCD SNRHCYCEEGWAPPDCTTQLKATSSLTGLLL  
SLLVLLVLM LGASYWYRRLHQRLCQLKGPTCQYRLVLSASRPPLPGRCLTL CPRDSSLRGQSPHPQ  
GSHCLTPRAGHRVTCPAQGLSRP

TRTRPLEQKLI SEEDLAANDILDYKDDDDKV

**Restriction Sites:** Sgfl-MluI

**Cloning Scheme:**

Cloning sites used for ORF Shuttling:



\* The last codon before the Stop codon of the ORF

**ACCN:** NM\_001261465

**ORF Size:** 2388 bp

**OTI Disclaimer:** The molecular sequence of this clone aligns with the gene accession number as a point of reference only. However, individual transcript sequences of the same gene can differ through naturally occurring variations (e.g. polymorphisms), each with its own valid existence. This clone is substantially in agreement with the reference, but a complete review of all prevailing variants is recommended prior to use. [More info](#)
**OTI Annotation:** This clone was engineered to express the complete ORF with an expression tag. Expression varies depending on the nature of the gene.

**Components:** The ORF clone is ion-exchange column purified and shipped in a 2D barcoded Matrix tube containing 10ug of transfection-ready, dried plasmid DNA (reconstitute with 100 ul of water).

**Reconstitution Method:**

1. Centrifuge at 5,000xg for 5min.
2. Carefully open the tube and add 100ul of sterile water to dissolve the DNA.
3. Close the tube and incubate for 10 minutes at room temperature.
4. Briefly vortex the tube and then do a quick spin (less than 5000xg) to concentrate the liquid at the bottom.
5. Store the suspended plasmid at -20°C. The DNA is stable for at least one year from date of shipping when stored at -20°C.

**RefSeq:** [NM\\_001261465.2](#)

**RefSeq Size:** 2854 bp

**RefSeq ORF:** 2391 bp

**Locus ID:** 8751

**UniProt ID:** [Q13444](#)

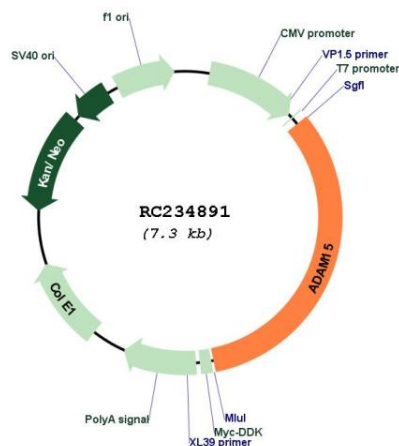
**Cytogenetics:** 1q21.3

**Protein Families:** Druggable Genome, Protease, Transmembrane

**MW:** 86.8 kDa

**Gene Summary:** The protein encoded by this gene is a member of the ADAM (a disintegrin and metalloproteinase) protein family. ADAM family members are type I transmembrane glycoproteins known to be involved in cell adhesion and proteolytic ectodomain processing of cytokines and adhesion molecules. This protein contains multiple functional domains including a zinc-binding metalloprotease domain, a disintegrin-like domain, as well as a EGF-like domain. Through its disintegrin-like domain, this protein specifically interacts with the integrin beta chain, beta 3. It also interacts with Src family protein-tyrosine kinases in a phosphorylation-dependent manner, suggesting that this protein may function in cell-cell adhesion as well as in cellular signaling. Multiple alternatively spliced transcript variants encoding distinct isoforms have been observed. [provided by RefSeq, Jul 2008]

## Product images:



Circular map for RC234891

