

Product datasheet for **RC234878**

CHD1L (NM_024568) Human Tagged ORF Clone

Product data:

Product Type:	Expression Plasmids
Product Name:	CHD1L (NM_024568) Human Tagged ORF Clone
Tag:	Myc-DDK
Symbol:	CHD1L
Synonyms:	ALC1; CHDL
Mammalian Cell Selection:	Neomycin
Vector:	pCMV6-Entry (PS100001)
E. coli Selection:	Kanamycin (25 ug/mL)



[View online »](#)

ORF Nucleotide Sequence:

>RC234878 representing NM_024568
 Red=Cloning site Blue=ORF Green=Tags(s)

TTTTGTAATACGACTCACTATAGGGCGGCCGGAATTCGTCGACTGGATCCGGTACCGAGGAGATCTGCC
 GCC**CGCATCGCC**

ATGCAGAGATTTGCTCCAGGTCTTTCTGTGTAACATATGCAGGCGACAAGGAGGAAAGAGCCTGCCTTC
 AGCAAGACCTGAAACAGGAGTCACGTTTTTCATGTGCTACTGACTACCTATGAGATTTGCTTGAAAGATGC
 ATCATTCTAAAAATCATTCCCTTGGAGTGTCTTGTGTGGATGAAGCTCACAGTTGAAAAACCAAAGC
 TCCCTGCTGCATAAGACCTTGTGAGAGTCTCAGTAGTCTTCACTCTCTGTTGACCGGAACTCCCATCC
 AGAACAGCCTCCAAGAGCTCTACTCCCTCCTCAGTTTTGTGGAGCCTGATCTCTTTTCCAAGGAAGAGGT
 GGGAGATTTTATTCAACGCTACCAGGATATTGAGAAAGAATCTGAGTCAGCAAGTGAAGTGCACAAACTC
 TTGCAGCCATTTCTGCTGAGGCGAGTGAAAGCTGAGGTAGCTACAGAGCTTCCCAAGAAGACAGAAGTAG
 TGATATACCATGGCATGTCAGCATTGCAGAAGAAATACTACAAGGCCATTTTGATGAAAGACCTAGATGC
 ATTTGAAAATGAGACGGCAAAGAAAGTTAAACTACAGAACATTTTGTCCCAGCTTCGAAAGTGTGTGGAT
 CACCCATATTTGTTTGTGGTGTGGAGCCGGAGCCTTTTGAAGTTGGAGACCACCTGACTGAGGCTAGTG
 GGAAGCTTCACTGCTGGATAAGCTACTAGCATTCTGTATTCTGGGGCCATCGGGTTTTACTTTTCTC
 CCAATGACCCAGATGTTGGATATTCTCCAAGACTATATGGATTACAGAGGCTACAGCTATGAGCGTGTG
 GATGGTTCTGTGAGAGGAGAAGAGAGACTTGGCCATTAAGAACTTTGGACAGCAGCCATTTTCGTTT
 TTCTCTGAGTACTAGGGCAGGTGGAGTTGGCATGAACTTAACAGCAGCAGACTGTGATTTTTGTTGA
 CAGTGACTTTAATCCTCAGAATGACTTGAAGCAGCTGCCAGGGCTCATCGCATTGGCCAAAACAAGTCT
 GTTAAAGTTATTCGGCTGATTGGTCGAGACACTGTGAAGAAATAGTCTATAGGAAAGCAGCCTCCAAC
 TGACCTCACCAACATGATCATAGAAGGAGGCCATTTTACTCTGGGAGCCAGAAACCCGCTCCGATGC
 TGACCTCCAGTTGAGTGAGATACTCAAATTTGGTTTGGATAAACTGCTGGCCTCTGAGGGGAGCACCATG
 GATGAAATAGACCTGGAGTCCATCCTGGGAGAAACAAAAGATGGCCAGTGGGTCTCTGATGCCTGCCTG
 CAGCAGAAGGAGGGAGCAGAGATCAAGAGGAAGGAAAAATCATATGTAATTTGAAAGTAAAGATTA
 TTCTAAAGAGCCAGTAAGGAAGACAGAAAATCATTGAACTGTTAAACCTTCAGAAAACCTTTTGG
 GAGAAAGCTAGTCAAGAGGGCCGATCACTCCGAAATAAGGCAGTGTCTCATCCAGGCCCTTGTGGAGG
 GATCTACCAAAAGGAAGCGGTTCTGAGTCCAGAAGAGCTGGAGGACAGACAGAAGAAAAGACAAGAAGC
 AGCTGCCAAGAGAAGGAGACTCATAGAGGAGAAGAAGAGGCAAAGGAAGAGGCTGAACATAAGAAAAAG
 ATGGCCTGGTGGGAATCCAACAATTACCAAGTCTTCTGCCTGCCCTCTGAGGAGAGCGAGCCAGAGGACC
 TTGAGAATGGGGAAGAGAGCTCTGCTGAGCTGGATTACCAAGACCAGATGCTACTTCCCTCAAGTACGT
 TAGTGGTGATGTACCCACCCTCAGGCTGGGGCCGAGGATGCTCTCATTGTGCACTGCGTAGATGACTCT
 GGCCACTGGGGCAGAGGTGGTTATTTACAGCTCTGAAAAGCGATCCGCTGAGCCAAGAAAAATATATG
 AGCTGGCTGGGAAAATGAAAGACCTGAGTTTGGGAGGTGTCTTTTATTTCTGTGATGATAAAGAATC
 AAGAAACAAAGGGCAAGATTTGTTGGCCTTGTGTTGGCTCAGCATCGTGATCGTTCCAATGTCTGTCT
 GGCATTAAGATGGCAGCCCTAGAAGAGGGCCTGAAGAAGATATTTTAGCAGCAAAAAGAAAGAAAGCAA
 GTGTTTCATTTCCACGTATTGGACATGCCACGAAAGTTTTAACTGGTATGGTACTGAGCGACTTATTCG
 GAAACATCTGGCTGCAAGAGGCATCCCAACTTACATATATTTTCTAGAAAGCAAGTCTGCTGTCTCT
 CATTACAGTCTTCATCTTCTCCTCAAGACAGCTGGTGCT

ACGCGTACGCGGCCGCTCGAGCAGAAACTCATCTCAGAAGAGGATCTGGCAGCAATGATATCCTGGATT
 ACAAGGATGACGACGATAAGGTTTAA

Protein Sequence: >RC234878 representing NM_024568
Red=Cloning site Green=Tags(s)

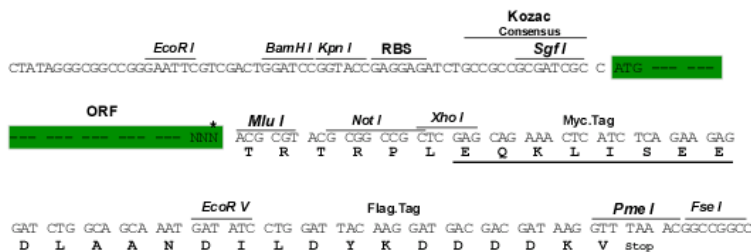
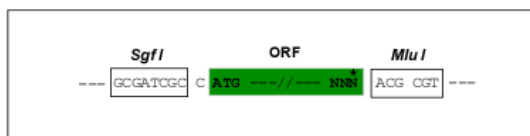
MQRFAPGLSCVTYAGDKEERAQLQQDLKQESRFHVLLTTYEICKDASFLKSPWSVLVDEAHLKNQS
SLLHKTLSEFSVVFSLLLTGTPIQNSLQELYSLLSFVEPDLFSKEEVGDFIQRYQDIEKESASELHKL
LQPFLLRRVKAEVATELPPKTEVVIYHGMSALQKKYYKAILMKDLDAFENETAKKVKLQNILSQLRKCVD
HPYLFDGVEPEPFEVGDHLTEASGKLHLLDKLLAFLYSGGHRVLLFSQMTQMLDILQDYMDYRGYSYERV
DGSVRGEERHLAIKNFGQPIFVFLSTRAGGVGMNLTAADTVIFVDSDFNPQNDLQAAARAHRIQONKS
YKVIRLIGRDTVEEIVYRKAASKLQLTNMIEEGHFTLGAQKPAADADLQSEILKFGLDKLLASEGSTM
DEIDLESILGETKDGQWYSDALPAAEGGSRDQEEGKNHMYLFEGKDYSKEPSKEDRKSFEQLVNLQKTL
EKASQEGRSLRNKGSVLIPGLVEGSTRKRKRVLSPEELEDQRQKRQEAAAKRRRLIEEKRQKEEAHKKK
MAWWESNNYQSFCLPSESEPEDLENGEESSAELDYQDPDATSLKYVSGDVTHPQAGAEDALIVHCVDDS
GHWGRGGLFTALEKRSAEPRKIYELAGKMKDLSLGGVLLFPVDDKESRNKGQDLLALIVAQHRDRSNVLS
GIKMAALEGLKKIFLAAKKKKASVHLPRIGHATKGFNWWYGTERLIRKHLAARGIPTYYIYFPRSKSAVL
HSQSSSSSRQLVP

TRTRPLEQKLISEEDLAANDILDYKDDDDKV

Restriction Sites: Sgfl-MluI

Cloning Scheme:

Cloning sites used for ORF Shutting:



* The last codon before the Stop codon of the ORF

ACCN: NM_024568

ORF Size: 2352 bp

OTI Disclaimer: The molecular sequence of this clone aligns with the gene accession number as a point of reference only. However, individual transcript sequences of the same gene can differ through naturally occurring variations (e.g. polymorphisms), each with its own valid existence. This clone is substantially in agreement with the reference, but a complete review of all prevailing variants is recommended prior to use. [More info](#)

OTI Annotation: This clone was engineered to express the complete ORF with an expression tag. Expression varies depending on the nature of the gene.

Components: The ORF clone is ion-exchange column purified and shipped in a 2D barcoded Matrix tube containing 10ug of transfection-ready, dried plasmid DNA (reconstitute with 100 ul of water).

Reconstitution Method:

1. Centrifuge at 5,000xg for 5min.
2. Carefully open the tube and add 100ul of sterile water to dissolve the DNA.
3. Close the tube and incubate for 10 minutes at room temperature.
4. Briefly vortex the tube and then do a quick spin (less than 5000xg) to concentrate the liquid at the bottom.
5. Store the suspended plasmid at -20°C. The DNA is stable for at least one year from date of shipping when stored at -20°C.

RefSeq: [NM_024568.4](#)

RefSeq Size: 3008 bp

RefSeq ORF: 2355 bp

Locus ID: 9557

UniProt ID: [Q86WJ1](#)

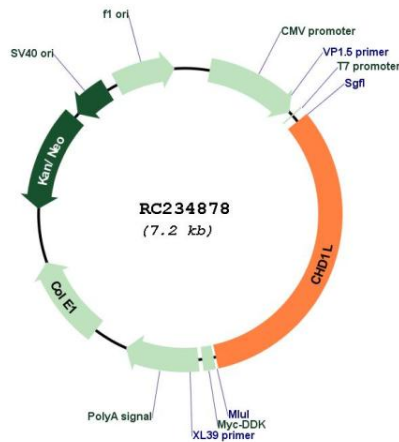
Cytogenetics: 1q21.1

Domains: SNF2_N, helicase_C

MW: 88.9 kDa

Gene Summary: This gene encodes a DNA helicase protein involved in DNA repair. The protein converts ATP to add poly(ADP-ribose) as it regulates chromatin relaxation following DNA damage. Overexpression of this gene has been linked to several types of cancers. [provided by RefSeq, Feb 2017]

Product images:



Circular map for RC234878