

## Product datasheet for **RC234871**

### **ARHGEF38 (NM\_001242729) Human Tagged ORF Clone**

#### **Product data:**

Product Type:	Expression Plasmids
Product Name:	ARHGEF38 (NM_001242729) Human Tagged ORF Clone
Tag:	Myc-DDK
Symbol:	ARHGEF38
Mammalian Cell Selection:	Neomycin
Vector:	pCMV6-Entry (PS100001)
E. coli Selection:	Kanamycin (25 ug/mL)



[View online »](#)

**ORF Nucleotide  
Sequence:**

>RC234871 representing NM\_001242729  
 Red=Cloning site Blue=ORF Green=Tags(s)

TTTTGTAATACGACTCACTATAGGGCGGCCGGAATTCGTCGACTGGATCCGGTACCGAGGAGATCTGCC  
 GCC**CGCATCGCC**

ATGGAGCCCAAAGAAGCCACTGGGAAAGAAAACATGGTCACCAAGAAAAAGAATCTGGCCTTCTTGAGGT  
 CTAGACTCTATATGCTGGAGAGAAGGAAGACTGACACTGTGGTTGAGAGCAGTGTCTTCTGGGACCCTC  
 TGGCACCTTGAGGAGGAGCCAATCTGACAGGACCGAATACAACCAGAAATTACAAGAAAAGATGACTCCA  
 CAGGGTGAGTGTCTGTAGCTGAGACCTTAACCCAGAGGAAGAGCATCATATGAAGAGGATGATGGCAA  
 AGCGGGAAAAGATCATTAAAGGAGCTGATACAGACAGAAAAGGATTATCTCAATGATCTAGAGCTGTGTG  
 TAGGGAAGTGGTTCAGCCCTGAGAAATAAAAAGACTGATAGGCTGGATGTGGATAGCTTGTGTTAGCAAC  
 ATTGAGTCGTGCATCAGATATCAGCCAAGCTGCTGTCATTGTTGGAAGAGGCCACAACAGACGTGGAAC  
 CGGCCATGCAAGTAATTGGAGAAGTATTCTTGCAGATTAAGGGCCACTGGAAGATATTTATAAAATCTA  
 CTGCTATCACCATGATGAAGCACATAGTATACTGGAGTCTATGAAAAGGAAGAAGAGCTGAAGGAACAT  
 TTGAGCCACTGTATCCAGTCCTTAAAGAAAATATACATGCAAGAAGGCAAACCAAATATTGGACATGG  
 GCTCTTTGATGATCAAACCAATCAACGTGTGATGAAATACCCCTATTACTGTGCGAACTTCGGAATTC  
 CACCCCTCCCTCTCACCCAGATTACAGAGCACTGGACGATGCCTTTGCTGCTGTGAAGGACATTAATGTT  
 AACATCAATGAACCTAAAAGAAGGAAAGATTTAGTTCTAAAATACAAGAAGAATGACGAGGATGAATCAC  
 TTAAGACAAATTGTCTAACTAAATATTCATTCAATTAGCAAGAAATCAAAAAGAGTGACAAATCATCT  
 GAAGATTCTGACCAGAGGAGAATCACAGGTTAAAGACAATACCTTTAACAGAGAAGAAAAGCTGTTTGA  
 GCTTTAGAAAAGACTGTGAGGCTTTGTGTGAAGAACATTCACCTGTCTTCAACACATACAGGATGCCA  
 TGCCCTGGCTCTGCAGAGTGTGATGGACCTTCAGGAGATTTCAACAACAAAGACGATGAGATGGATA  
 TTCTGAGACCCTAAGTAATGCCTTAAATTCGTGTCATGACTTTGCATCTCACTTACAGAGACTCATCCTG  
 ACCCCCTGTGACCCCTGCTGCTCTTATCCAGGGCCTCACAAGCTCATCCAGAAACGCTATGACAAAAC  
 TGCTGGATTGCAACAGCTACCTGCAGCGATCAACGGGAGAGGAGTCAAGCTTGGCCAAAAAGGAGTATGA  
 GGCCCTCAACGCCAGCTTGTGGAGGAGCTCCAGGCATTCAACCAGGCTGCTCGGAAGATTCTGTTGAAC  
 TGTCTATGCAGCTTCATTACCCTCCTTAGGGACCTGATGCTCGTGGCACAGCAGGCTTACTCCACACTTG  
 TGCCGATGCCACTGTTGGTTTCAAGCATTCTGAGATTGAGAATCAAGTACTAGAAGAGATCCAAAATTT  
 GAATTGTGTGAAAGAAAACAGTGCCACCTTTATTGAGAGGAACTCAGTTTTGAAAAGAAGAAACCTGTG  
 CAGATTCTGCCAGAAATGCCACATCAAACCTGACATTCATCGCTCAAACCTCTATCCACATATAGTGCAG  
 AGGAACTCTATCAAGCTAAGCGCAAGTGAATGCTACACAAGAATATGACATCAATCTTCTGGAAGGAGA  
 CTTGGTGGCTGTGATAGAACAGAAAAGATCCACTGGGGAGTACAAGCAGGTGGCTTGTGGACACAGGAAAT  
 GTGAAAGGATATGTTTATTCCTCCTTCTAAAACCTACAATCCAGCAAAAATGCAGAAAGTGGATGCTG  
 AGAACAGGTTCTGTGACGATGATTTTGAGAACATCAGCCTCTTCGTGCTTACAGGCCAGCTAGTGACAG  
 TGTACAGGCACCTCAGAAAGCAGCATTGGTGATAGCAGCTCATCTTCTAGTGGCACATGTGAAAGTTT  
 GAAACAAATGGTACTGATGTTGACAGTTTTCAAGAAGTAGACGAACAGATTTTCTATGCAGTTCATGCTT  
 TTCAAGCACGGAGTGACCATGAACTCAGCCTTCAGGAATACCAGAGAGTTCATATACTCAGGTTTTGTGA  
 CCTAAGTGGCAATAAAGAGTGGTGGTTAGCTGAAGCTCAAGGGCAGAAAGGATACGTGCCAGCTAACTAC  
 CTTGAAAAGATGACTTATGCT

**ACGCGT**ACGCGGCCGCTCGAGCAGAAAACCTCATCTCAGAAGAGGATCTGGCAGCAAATGATATCCTGGATT  
 ACAAGGATGACGACGATAAGGTTTAA

**Protein Sequence:** >RC234871 representing NM\_001242729  
Red=Cloning site Green=Tags(s)

MEPKEATGKENMVTKKKNLAF LRSRL YMLERRKTDTVVSSVSGDHSGTLRRSQSDRTEYNQKLQEKMTP  
QGECSVAETLTPEEEHHMKRMMAKREKI IKELIQTEKDYLNDELCVREVVQPLRNKKTDRLDVDSLFSN  
IESVHQISAKLLSLL EEATTDVEPAMQVIGEVFLQIKGPLEDIYKIYCYHHDEAH SILES YEKEEELKEH  
LSHC IQSLKKIYMQE GKP NLLDMGSLMIKPIQRVMKYPLLL CELRNSTPPSHPDYRALDDAFAAVKDINV  
NINELKRRKDLVLKYKKNDESESLKDKLSKLNHSISKKSkrVTNHLKILTRGESQVKDNTFNREEK LFR  
ALEKTVRLCVKNI SLCLQHIQDAMPLALQSYM LQEISYNKDDMDYSETLSNALNSCHDFASHLQRLIL  
TPLSALLSLFPGPHKL IQKRYDKLLDCNSYLQRSTGEESDLAKKEYEALNAQLVEELQAFNQAARKILLN  
CLCSFITLLRDLMLVAQQAYSTLVPMPLLVSSISEIQNQVLEEIQNLNVCYKENSATFIERKLSFEK KPV  
QILPEMPHQTDIHRSKLLSTYSAEEL YQAKRKC NATQEYDINLLEGLVAVIEQK DPLGSTRWLVDTGN  
VKGYYVSSFLKPYNPAKMQKVD AENRF CDDDFENISL FVSSRPASDSVTGTSESSIGDSSSSLSGTCGKF  
ETNGTDVDSFQEVDEQIF YAVHAFQARSDEL SLQEYQRVHILRFCDLSGNKEWLLAEAQQGQGYVPANY  
LGKMTYA

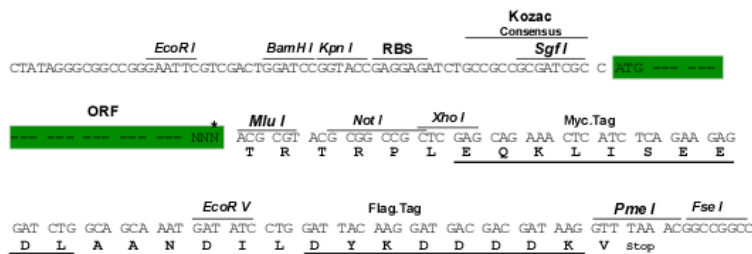
TRTRPLEQKLISEEDLAANDILDYKDDDDKV

**Restriction Sites:**

SgfI-MluI

**Cloning Scheme:**

Cloning sites used for ORF Shutting:



**ACCN:** NM\_001242729

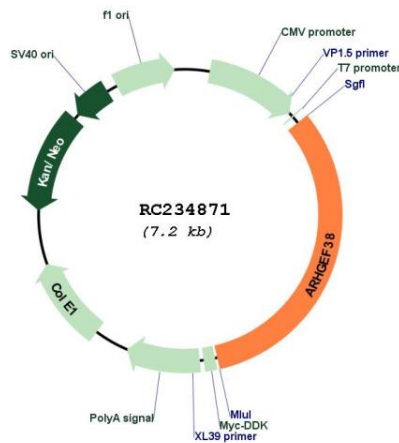
**ORF Size:** 2331 bp

**OTI Disclaimer:** The molecular sequence of this clone aligns with the gene accession number as a point of reference only. However, individual transcript sequences of the same gene can differ through naturally occurring variations (e.g. polymorphisms), each with its own valid existence. This clone is substantially in agreement with the reference, but a complete review of all prevailing variants is recommended prior to use. [More info](#)

**OTI Annotation:** This clone was engineered to express the complete ORF with an expression tag. Expression varies depending on the nature of the gene.

- Components:** The ORF clone is ion-exchange column purified and shipped in a 2D barcoded Matrix tube containing 10ug of transfection-ready, dried plasmid DNA (reconstitute with 100 ul of water).
- Reconstitution Method:**
1. Centrifuge at 5,000xg for 5min.
  2. Carefully open the tube and add 100ul of sterile water to dissolve the DNA.
  3. Close the tube and incubate for 10 minutes at room temperature.
  4. Briefly vortex the tube and then do a quick spin (less than 5000xg) to concentrate the liquid at the bottom.
  5. Store the suspended plasmid at -20°C. The DNA is stable for at least one year from date of shipping when stored at -20°C.
- RefSeq:** [NM\\_001242729.2](#)
- RefSeq Size:** 5456 bp
- RefSeq ORF:** 2334 bp
- Locus ID:** 54848
- UniProt ID:** [Q9NXL2](#)
- Cytogenetics:** 4q24
- MW:** 89.5 kDa
- Gene Summary:** May act as a guanine-nucleotide releasing factor.[UniProtKB/Swiss-Prot Function]

**Product images:**



Circular map for RC234871