

Product datasheet for **RC234816**

KCNN3 (NM_001204087) Human Tagged ORF Clone

Product data:

Product Type:	Expression Plasmids
Product Name:	KCNN3 (NM_001204087) Human Tagged ORF Clone
Tag:	Myc-DDK
Symbol:	KCNN3
Synonyms:	hSK3; KCa2.3; SK3; SKCA3; ZLS3
Mammalian Cell Selection:	Neomycin
Vector:	pCMV6-Entry (PS100001)
E. coli Selection:	Kanamycin (25 ug/mL)



[View online »](#)

ORF Nucleotide Sequence:

>RC234816 representing NM_001204087
 Red=Cloning site Blue=ORF Green=Tags(s)

TTTTGTAATACGACTCACTATAGGGCGGCCGGGAATTCGTCGACTGGATCCGGTACCGAGGAGATCTGCC
 GCC**CGGATCGCC**

ATGGACACTTCTGGGCACTTCCATGACTCGGGGTGGGGACTTGGATGAAGACCCCAAGTGCCCTGTCC
 CATCCTCTGGGGATGAGCAGCAGCAGCAGCAGCAACAGCAGCAGCAGCCACCACCAGCCAGCGCC
 ACCAGCAGCCCCCAGCAGCCCCGTTGGGACCCTCGCTGCAGCCTCAGCCTCCGAGCTTCAGCAGCAGCAG
 CAGCAGCAGCAGCAGCAGCAGCAGCAGCAGCCACCGCATCCCCTGTCTCAGCTCGCCAACTCCAGAGCC
 AGCCCGTCCACCCTGGCCTGCTGCACTCCTCTCCACCCTTTCAGGGCCCCCCTTCGTCCAATCCAC
 CGCCATCTCCACCCTTCTCCAGGCAAGGCAGCCAGCTCAATCTCAATGACCACTTGCTGGCCACTCT
 CCAAGTCCACAGCTACAAGTGGCCTGGCGGAGGCAGCCGGCACCAGCCAGCCCGCCCTGGTGCACC
 GCGGGGACAGCAACCCCTCACGGAGATCGCCATGAGCTCCTGCAAGTATAGCGGTGGGGTCATGAAGCC
 CCTCAGCCGCTCAGCGCTCCCGGAGGAACCTCATCGAGCCGAGACTGAGGGCAACCCCTCCAGCTT
 TTCAGCCCTAGCAACCCCGGAGATCGTCATCTCCTCCCGGAGGACAACCATGCCACCAGACCCCTGC
 TCCATCACCTAATGCCACCCACAACCACCAGCATGCCGGCACCACCAGCAGCAGCACCCTTCCCCAA
 AGCCAACAAGCGGAAAAACAAAACATTGGCTATAAGCTGGGACACAGGAGGGCCCTGTTGAAAAGAGA
 AAGCGACTGAGTGACTATGCTCTGATTTTTGGGATGTTTGGAAATTGTTGTTATGGTGATAGAGACCAGC
 TCTCTTGGGGTTTGTACTCAAAGGACTCCATGTTTTCGTTGGCCCTGAAATGCCTTATCAGTCTGTCCAC
 CATCATCTTTTGGGCTTGATCATCGCTACCACACAGTGAAGTCCAGCTTTCGTGATCGACAATGGC
 GCGGATGACTGGCGGATAGCCATGACCTACGAGCGCATCCTGTACATCAGCCTGGAGATGCTGGTGTGCG
 CATTCCACCCCATTCCTGGCGAGTACAAGTCTTCTGGACGGCAGCCTGGCCTTCTCCTACACACCCCTC
 CCGGGCGGAGGCCGATGTGGACATCATCTGTCTATCCCATGTTCTCGCCTGTACCTGATCGCCCGA
 GTCATGCTGCTGCACAGCAAGCTCTTACCAGTGCCTCGTCCCGCAGCATCGGGGCCCTCAACAAGATCA
 ACTTCAACACCCGCTTTGTGATGAAGACGCTCATGACCATCTGCCTGGCACTGTGCTGCTCGTGTTCAG
 CATCTCTCTGTGGATCATTGCTGCCTGGACCGTCCGTGTCTGTGAAAGTCTGAATCACCAGCCAGCCT
 TCTGGCTCATCACTTCTGCTTGGTACCATGACCAGCAGGACGTAAGTAACTTTCTGGGTGCCATGT
 GGCTCATCTCCATCACATTCCTTCCATTGGTTATGGGGACATGGTGCCCCACACATACTGTGGAAAGG
 TGTCTGTCTCCTCACTGGCATCATGGGTGCAGGCTGCACTGCCCTGTGGTGGCCGTGGTGGCCGAAAG
 CTGGAACCTACCAAGCGGAGAAGCAGCCTTCACTAATTCATGATGGACACTCAGCTCACCAAGCGGATCA
 AGAATGCTGCAGCCAATGTCTTCGGGAAACATGGTTAATCTATAAACACACAAAGCTGCTAAAGAAGAT
 TGACCATGCCAAAGTGAGGAAACACCAGAGGAAGTTCCTCCAAGCTATCCACCAGTTGAGGAGCGTCAAG
 ATGGAACAGAGGAAGCTGAGTGACCAAGCAACTCTGGTGGACCTTTCCTAAGTGCAGAAATGTCATGT
 ATGACTTAATCACAGAACTCAATGACCGGAGCGAAGACCTGGAGAAGCAGATTGGCAGCCTGGAGTCGAA
 GCTGGAGCATCTACCGCCAGCTTCAACTCCCTGCCGTGCTCATCGCCGACACCCTGCGCCAGCAGCAG
 CAGCAGCTCCTGTCTGCCATCATCGAGGCCGGGGTGTACGCGTGGCAGTGGGCACCACCCACACCCCAA
 TCTCCGATAGCCCATTTGGGGTCAGTCCACCTCCTTCCCGACCCGTACACAAGTTCAGCAGTTGC

ACGCGTACGCGGCCGCTCGAGCAGAACTCATCTCAGAAGAGGATCTGGCAGCAAATGATATCCTGGATT
 ACAAGGATGACGACGATAAGGTTTAA

Protein Sequence: >RC234816 representing NM_001204087
 Red=Cloning site Green=Tags(s)

```

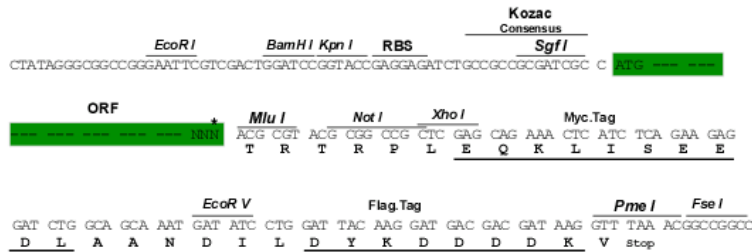
MDTSGHFHDSGVGDLDEDPKCPCPSSGDEQQQQQQQQQQQPPPPAPPAAPQQPLGPSLQPPQLQQQQ
QQQQQQQQQPPHPLSQLAQLQSQPVHPGLLHSSPTAFRAPPSSNSTAILHPSSRQGSQNLNDHLLGHS
PSSTATSGPGGSRHRQASPLVHRRDSNPFTEIAMSSCKYSGGVMKPLSRLSASRRNLIEAETEGQPLQL
FSPSNPPEIVISSREDNHAHQTLHHPNATHNHQHAGTTASSTTFPKANKRKNQNIQYKLGHRRALFEKR
KRLSDYALIFGMFGIVVMVIETELSWGLYSKDSMFLALKCLISLSTIILLGLIIAYHTREVQLFVIDNG
ADDWRIAMTYERILYISLEMLVCAIHPPIPEYKFFWTARLAFSYTPSRAEADVDIILSIPMFLRLYLAR
VMLLHSLKFTDASSRSIGALNKINFNTRFVMTLMTICPGTVLLVFSISLWIIAAWTVRVCESPESPAQP
SGSSLPAWYHDQDVTSNFLGAMWLISITFLSIGYDMVPHTYCGKGVCLLTGIMGAGCTALVVAVVARK
LELTKAEKHVHNFMMDTQLTKRIKNAANVLRETWLIYKHTKLLKKIDHAKVRKHQRKFLQAIHQLRSVK
MEQRKLSQANTLVDL SKM QNV MYDLITELNDRSEDLEKQIGSLESKLEHLTASFNSLPLLIADTLRQQQ
QQLLSAIIIEARGVSVAVGTTHTPI SDSPIGVSSTSFPTPYTSSSSC
  
```

TRTRPLEQKLI SEEDLAANDILDYKDDDDKV

Restriction Sites: SgfI-MluI

Cloning Scheme:

Cloning sites used for ORF Shuttling:



* The last codon before the Stop codon of the ORF

ACCN: NM_001204087

ORF Size: 2238 bp

OTI Disclaimer: The molecular sequence of this clone aligns with the gene accession number as a point of reference only. However, individual transcript sequences of the same gene can differ through naturally occurring variations (e.g. polymorphisms), each with its own valid existence. This clone is substantially in agreement with the reference, but a complete review of all prevailing variants is recommended prior to use. [More info](#)

OTI Annotation: This clone was engineered to express the complete ORF with an expression tag. Expression varies depending on the nature of the gene.

Components: The ORF clone is ion-exchange column purified and shipped in a 2D barcoded Matrix tube containing 10ug of transfection-ready, dried plasmid DNA (reconstitute with 100 ul of water).

Reconstitution Method:

1. Centrifuge at 5,000xg for 5min.
2. Carefully open the tube and add 100ul of sterile water to dissolve the DNA.
3. Close the tube and incubate for 10 minutes at room temperature.
4. Briefly vortex the tube and then do a quick spin (less than 5000xg) to concentrate the liquid at the bottom.
5. Store the suspended plasmid at -20°C. The DNA is stable for at least one year from date of shipping when stored at -20°C.

RefSeq: [NM_001204087.1](#), [NP_001191016.1](#)

RefSeq Size: 13080 bp

RefSeq ORF: 2241 bp

Locus ID: 3782

UniProt ID: [Q9UGI6](#)

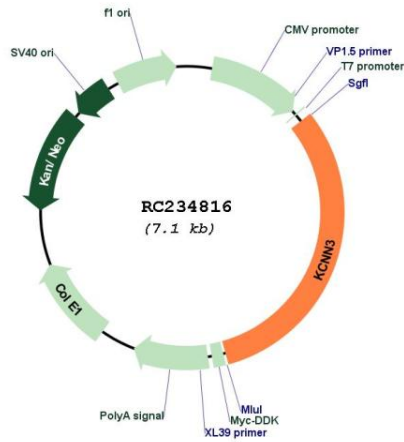
Cytogenetics: 1q21.3

Protein Families: Druggable Genome, Ion Channels: Potassium, Transmembrane

MW: 83.3 kDa

Gene Summary: Action potentials in vertebrate neurons are followed by an afterhyperpolarization (AHP) that may persist for several seconds and may have profound consequences for the firing pattern of the neuron. Each component of the AHP is kinetically distinct and is mediated by different calcium-activated potassium channels. This gene belongs to the KCNN family of potassium channels. It encodes an integral membrane protein that forms a voltage-independent calcium-activated channel, which is thought to regulate neuronal excitability by contributing to the slow component of synaptic AHP. This gene contains two CAG repeat regions in the coding sequence. It was thought that expansion of one or both of these repeats could lead to an increased susceptibility to schizophrenia or bipolar disorder, but studies indicate that this is probably not the case. Alternatively spliced transcript variants encoding different isoforms have been found for this gene. [provided by RefSeq, Feb 2011]

Product images:



Circular map for RC234816