

Product datasheet for **RC234810**

EPC1 (NM_001272019) Human Tagged ORF Clone

Product data:

Product Type:	Expression Plasmids
Product Name:	EPC1 (NM_001272019) Human Tagged ORF Clone
Tag:	Myc-DDK
Symbol:	EPC1
Synonyms:	Epl1
Mammalian Cell Selection:	Neomycin
Vector:	pCMV6-Entry (PS100001)
E. coli Selection:	Kanamycin (25 ug/mL)



[View online »](#)

ORF Nucleotide Sequence:

>RC234810 representing NM_001272019
 Red=Cloning site Blue=ORF Green=Tags(s)

TTTTGTAATACGACTCACTATAGGGCGGCCGGAATTCGTCGACTGGATCCGGTACCGAGGAGATCTGCC
 GCC**CGGATCGCC**

ATGGTTATACCGGTCCCAGAGGCAGAAAAGTAATATTGCTTACTATGAGTCTATATATCCTGGGGAATTTA
 AGATGCCAAAGCAGCTCATTACATACAGCCTTTTAGTTGGATGCTGAACAGCCTGATTATGATTTGGA
 TTCTGAAGATGAAGTATTTGTGAATAAACTGAAAAAGAAAATGGACATCTGCCATTGCAATTTGAGGAG
 ATGATTGACCGCTAGAAAAAGGCAGTGGTCAGCAGCCAGTCAGTCTGCAGGAAGCCAACTACTGCTAA
 AAGAAGATGATGAACTAATTAGAGAAGTTTATGAATATTGGATTAAGAAAGAGAAAAACTGTCGAGGGCC
 ATCTCTTATTCCATCAGTAAAACAAGAGAAGCGAGATGGTTCCAGCACAAATGATCCTTATGTGGCTTTT
 AGAAGGCGTACTGAAAAATGCAGACTCGAAAAATCGAAAAATGATGAAGCCTTTACGAAAAATGC
 TTAAGCTGCGACGAGATCTAAGTCGAGCTGTTACTATTCTAGAGATGATAAAAAGAAGAGAAAAAGTAA
 AAGAGAGCTATTGCATTAACACTGGAAATTTGAAAAAGAGGTATAATTTGGGCGACTACAATGGAGAG
 ATCATGTCTGAGGTTATGGCACAGAGACAGCCAATGAAACCTACTTATGCCATCCCCATCATCCCTATTA
 CTAATAGCAGTCAATTTAAACACCAGGAAGCAATGGATGTGAAGGAGTTCAAAGTTAATAAGCAAGATAA
 AGCCGATCTTATCCGACCGAAACGGAAATATGAAAAGAAGCCCAAAGTCTTACCATCGTCTGCCGCTGCT
 ACTCCCCAACAGACGAGTCTGCTGCACTGCCAGTCTTCAATGCTAAAGATCTGAATCAGTATGACTTTT
 CCAGCTCAGACGAAGAACCTCTCTCCAGGTTTTGTCTGGCTCTTCGGAAGCTGAGGAAGACAATGATCC
 TGATGGTCCTTTTGCTTTCCGTAGGAAAGCAGGCTGTCACTATGCTCCTCACTTAGACCAAAGTGGC
 AACTGGCCTTGGACTAGTCTAAAGATGGAGGATTAGGGGATGTGCGATATAGATACTGTTAACTACTC
 TCACCGTACCCCAAAGGTGATTTGGATTTGCACGAAGACGGGTTGGGCGCGGTGGAAGGGTCTTACTGGA
 CAGAGCTCATTACAGACTATGACAGTGTGTTTACCATCTGGATTTGGAATGCTTTCTCACCACAACAT
 TCTCCAGTCAATCAGTTTCCAATACCTCAGAAACAAATACCTCGGACAAATCTTTCTCTAAAGACCTCA
 GTCAGATACTAGTCAATATCAAATCATGTAGATGGCGGCATTTTAGGCCTCGGACACCATCCCTACATGA
 CAGTGACAATGATGAACTCTCCTGTAGAAAATTATATAGGAGTATAAACCGAACAGGAACAGCACAACT
 GGGACCCAGACATGCAGTACCTTACGCAAAGTAAAAGTAGCAGTGGTTCAGCACACTTTGCATTTACAG
 CCGAACAATACCAGCAACATCAACAGCAACTGGCACTCATGCAGAAACAGCAGCTGCACAAATTCAGCA
 ACAGCAAGCAAAATAGTAATTCCTCCACCAACACATCACAGGGTTTTGTTTCTAAGACTTTGGATTCTGCT
 AGTGCACAGTTTGTGCTTCTGCTTTGGTGACATCAGAACAAGTATGAGGATTCAAGATGAAGGATGATG
 TGGTGTGTTGGAATCGGGGTGAATGGCGTCTTCCAGCCTCAGGAGTATACAAGGGCTTACACCTCAGTAG
 TACTACCAACAGCACTTGTACATACAAGTCCATCAACGGCAGGTTTCAAGCTTTGTTACAGCCTTCAAAT
 ATTACACAGACTTCAAGTTCCCACAGTGCAGTCAAGTAACTGCTGCCAATTCTGCAACAAGTCT
 AGGTTCTGATTGGGAACAACATTCGATTAAGTGTACCTTCATCAGTTGCCACTGTAACTCTATTGCCCC
 AATAAATGCACGACATATACCTAGGACTTTAAGTGCTGTTCCATCATCTGCCTTAAAGCTGGCCGCTGCA
 GCAAATGTCAAGTTTCCAAGTCCCATCTTCCTCTGTAGATTCAAGTTCCAAGGAAAAATCATGAAT
 CAGAAAAGCCAGCACTGAACAACATAGCAGACAACACAGTAGCGATGGAGGTGACC

ACGCGTACGCGGCCGCTCGAGCAGAACTCATCTCAGAAGAGGATCTGGCAGCAAATGATATCCTGGATT
 ACAAGGATGACGACGATGAGTTTAA

Protein Sequence: >RC234810 representing NM_001272019
 Red=Cloning site Green=Tags(s)

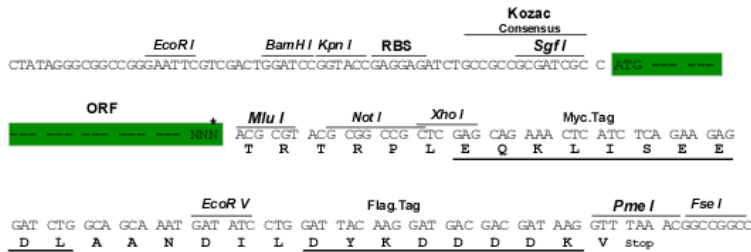
```
MVIPVPEAESNIAYYESIYPGEFKMPKQLIHIQPFSLDAEQPDYDLSEDEVFVNKLLKKMDICPLQFEE
MIDRLEKGGSGQQPVSLQEAKLLKEDDELIREVVEYWIKKRKNCRGPSLIPSVKQEKRDGSSNDPYYVAF
RRRTEKMQTRKNRKNDEASYEKMLKLRDL.SRAVTILEMIKRREKSKRELLHLTLEIMEKRYNLGDYNGE
IMSEVMAQRQPMKPTYAIPPIIPITNSSQFKHQEAMDVKEFKVVKQDKADLIRPKRKYEKPKVLPSSAAA
TPQQTSPAALPVFNAKDLNQYDFPSSDEEPL.SQVLSGSSEAEEDNDPDGPF.FRRKAGCQYYAPHLDQTG
NWPWTSKDGGLGDVRYRYCLTTLTVPQRCIGFARRRVGRGGRVLLDRAHSDYDSVFHHLDEMLSSPQH
SPVNFQFANTSETNTSDKFSKDLSQLVNIKSCRWRHFRPRTPSLHSDNDELSCRKLYRSINRTGTAQP
GTQTCSTSTQSKSSSGSAHFAFTAQYQHQQLALMOKQQLAQIQQQANSNSTNTSQGFVSKTLDSA
SAQFAASALVTSEQLMGFKMKDDVVLGIGVNGVLPASGVYKGLHLSSTTPTALVHTSPSTAGSALLQPSN
ITQTSSSHSALSHQVTAANSATTQVLIGNNIRLTPSSVATVNSIAPINARHIPRTL.SAVPSSALKLAAA
ANCQVSKVPSSSSVDSVPRENHESEKPALNNIADNTVAMEVT
```

TRTRPLEQKLI SEEDLAANDILDYKDDDDKV

Restriction Sites: SgfI-MluI

Cloning Scheme:

Cloning sites used for ORF Shuttling:



* The last codon before the Stop codon of the ORF

ACCN: NM_001272019

ORF Size: 2226 bp

OTI Disclaimer: The molecular sequence of this clone aligns with the gene accession number as a point of reference only. However, individual transcript sequences of the same gene can differ through naturally occurring variations (e.g. polymorphisms), each with its own valid existence. This clone is substantially in agreement with the reference, but a complete review of all prevailing variants is recommended prior to use. [More info](#)

OTI Annotation: This clone was engineered to express the complete ORF with an expression tag. Expression varies depending on the nature of the gene.

Components: The ORF clone is ion-exchange column purified and shipped in a 2D barcoded Matrix tube containing 10ug of transfection-ready, dried plasmid DNA (reconstitute with 100 ul of water).

Reconstitution Method:

1. Centrifuge at 5,000xg for 5min.
2. Carefully open the tube and add 100ul of sterile water to dissolve the DNA.
3. Close the tube and incubate for 10 minutes at room temperature.
4. Briefly vortex the tube and then do a quick spin (less than 5000xg) to concentrate the liquid at the bottom.
5. Store the suspended plasmid at -20°C. The DNA is stable for at least one year from date of shipping when stored at -20°C.

RefSeq: [NM_001272019.4](#)

RefSeq Size: 3708 bp

RefSeq ORF: 2229 bp

Locus ID: 80314

UniProt ID: [Q9H2F5](#)

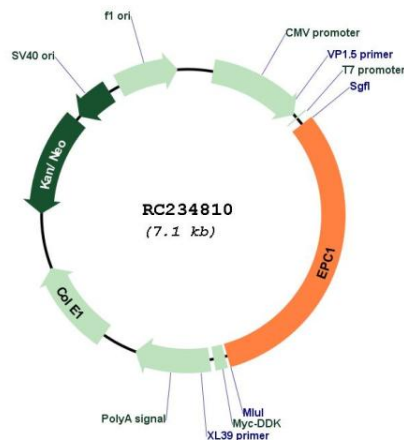
Cytogenetics: 10p11.22

Protein Families: Transcription Factors

MW: 83.2 kDa

Gene Summary: This gene encodes a member of the polycomb group (PcG) family. The encoded protein is a component of the NuA4 histone acetyltransferase complex and can act as both a transcriptional activator and repressor. The encoded protein has been linked to apoptosis, DNA repair, skeletal muscle differentiation, gene silencing, and adult T-cell leukemia/lymphoma. Alternative splicing results in multiple transcript variants. [provided by RefSeq, Dec 2012]

Product images:



Circular map for RC234810