

Product datasheet for **RC234809**

FAM40A (STRIP1) (NM_001270768) Human Tagged ORF Clone

Product data:

Product Type:	Expression Plasmids
Product Name:	FAM40A (STRIP1) (NM_001270768) Human Tagged ORF Clone
Tag:	Myc-DDK
Symbol:	FAM40A
Synonyms:	FAM40A; FAR11A
Mammalian Cell Selection:	Neomycin
Vector:	pCMV6-Entry (PS100001)
E. coli Selection:	Kanamycin (25 ug/mL)



[View online »](#)

ORF Nucleotide Sequence:

>RC234809 representing NM_001270768
 Red=Cloning site Blue=ORF Green=Tags(s)

TTTTGTAATACGACTCACTATAGGGCGGCCGGAATTCGTCGACTGGATCCGGTACCGAGGAGATCTGCC
 GCC**CGGATCGCC**

ATGAATCGAAAATGCTTTGAGGAGGACTCCGGATCCATGTGACAGACAAGAAGTGGACTGAGCTGGATA
 CCAACCAGCACCGGACCCATGCCATGAGGCTCCTGGATGGCTTGGAAAGTCACTGCCAGGGAGAAGAGACT
 CAAGGTGGCTCGAGCAATTCTCTATGTTGCTCAAGGCACGTTTGGGGAGTGCAGCTCGGAGGCAGAGGTG
 CAGTCTGGATGCGCTACAACATCTTTCTCCTCCTGGAGGTGGGCACGTTCAATGCTTTGGTGGAGCTTC
 TGAACATGGAAATAGACAACAGTGCCGCCTGCAGCAGTGTGTGAGGAAGCCTGCCATCTCCCTGGCTGA
 CAGCACAGACCTCAGGGTCTGTCAACATCATGTACCTGATAGTGGAGACCGTTCATCAGGAGTGTGAG
 GGTGACAAAGGCTGAGTGGAGGACCATGCGGCAGACCTTCAGAGCCGAGCTGGGCTCCCCGCTGTACAACA
 ATGAGCCATTTGCCATCATGCTGTTGGGATGGTGACCAATTTTGCAGTGGTACGCCCCCTCACTTTCC
 CATGAAGAAAGTTCTCTTGTCTGCTGGAAGACAGTATTGTGCAGCTAGCGGGCTTTGAGGAGCTGCAG
 AGCATGAAGGCTGAGAAGCGCAGCATCCTGGGCCCTCCCCCGCTTCTGAGGACAGCATCAAAGTATTCC
 GCAACATGAGAGCAGCCTCTCCACCAGCATCTGCTTCAGACTTGATTGAGCAGCAGCAGAAACGGGGCCG
 CCGAGAGCACAAGGCTCTGATAAAGCAGGACAACCTAGATGCCTTCAACGAGCGGGATCCCTACAAGGCT
 GATGACTCTCGAGAAGAGGAAGAGGAGAATGATGATGACAACAGTCTGGAGGGGGAGACGTTTCCCTG
 AACGGGATGAAGTGTGCCTCCCCGCTACAGCACCCACAGACTGACAGGCTGACTTGCCCCAAAGGCT
 CCCGTGGGCTCCCAAGGTGAGAGAGAAAGACATTGAGATGTTCTTGGTCCAGCCGAGCAAATTTATA
 GGTTACACTTAGGCAGTGACACGAACACAGTGGTGGGCTGCCAGGCAATCCACGAAAGCATCAAGA
 CTCTGAAACAGCACAAGTACAGTGCATTGAGAGGTCAGGCACAGATGGAGGAGGAATACCTCCGCT
 CCCTCTCTCAGGGGGAGAAGAAGAAGTTGAGCAAGTCCCTGCAGAAACCTCTACCAAGGCTTGTCCCC
 AGCCTGCCTCAGTATATGATTGCCTCCTGAAGATCCTGTTGGTGCAGCACCCACCTCAAAGCCAAAA
 CAGACTCAATCAACATCCTAGCGGACGCTTGCCTGAGGAGATGCCACCACAGTGTGAGAGCATGAA
 GCTGGGGGTGGATGTAACCGCCACAAAGAGGTCATTGTTAAGGCCATTTCTGCTGTCTGCTGCTGCTG
 CTCAAGCACTTTAAGTTGAACCATGTCTACCAGTTTGAATACATGGCCAGCACCTGGTGTGTTGCCA
 GCATTCCTTTGATCCTAAAGTTCTTCAATCAAACATCATGTCTACATCACTGCCAAGAAGCAGCATTT
 TGTCTGGATTACCCTCACTGCGTGGTGCATGAGCTGCCAGAGCTGACGGCGGAGAGTTTGAAGCAGGT
 GACAGTAACCAATTTTGGTGGAGGAACCTTTTTCTGTATCAATCTGCTTCGGATCTTGAACAAGCTGA
 CAAAGTGAAGCATTCAAGGACAATGATGCTGGTGGTGTCAAGTCAGCCCCATCTTGAAGCGGGCCCT
 AAAGGTGAAACAAGCCATGATGCAGCTCTATGTGCTGAAGCTGCTCAAGGTACAGACCAATACTTGGGG
 CGGCAGTGGCGAAAGAGCAACATGAAGACCATGTCTGCCATCTACCAGAAGGTGCGGCATCGGCTGAACG
 ACGACTGGGCATACGGCAATGATCTTGTGCCCCGCCCTGGGACTTCAGGCAGAGGAGTGTGCCCTTCG
 TGCCAACATTGAACGCTTCAACGCCCGCGCTATGACCGGGCCACAGCAACCCTGACTTCTGCCAGTG
 GACAACTGCCTGCAGAGTGTCTGGGCCAACGGGTGGACCTCCCTGAGGACTTTCAGATGAACTATGACC
 TCTGTTAGAAAGGGAGGTCTTCTCAAGCCATTTCTGGGAAGAGCTGCTGCAG

ACGCGTACGCGGCCGCTCGAGCAGAAACTCATCTCAGAAGAGGATCTGGCAGCAAATGATATCCTGGATT
 ACAAGGATGACGACGATAAGGTTTAA

Protein Sequence: >RC234809 representing NM_001270768
 Red=Cloning site Green=Tags(s)

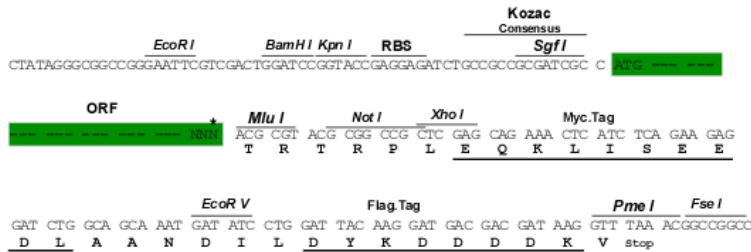
MNRKCFEEDFRIHVTDKKWTELDTNQHRTHAMRLLDGLEVTAREKRLKVARAILVYAQGTGFCSSAEAV
 QSWMRYNIFLLLEVGTFNALVELLNMEIDNSAACSSAVRKP AISLADSTDLRVLNIMYLIVETVHQECE
 GDKAEWRMTMRQTFRAELGSPLYNNEPFAIMLFGMVTKFCSGHAPHFPMKKVLLLLWKTVLCTLGFEELQ
 SMKAEKRSILGLPPLPEDIKVI RNMRAASPPASADLIEQQQKRGRREHKALIKQDNLDAFNERDPYKA
 DDSREEEEEENDDNSLEGETFPLERDEVMPPLQHPQTDRLTCPKGLPWAPKVREKDIEMFLESSRSKFI
 GYTLGSDTNTVVGLPRPIHESI KTLKQHKYTSIAEVQAQMEEYLRSP LSGGEEVEQVPAETLYQGLLP
 SLPQYMIALLKILLAAAPT SKAKTDSINILADVLPEEMPTTVLQSMKLGVDVNRHKEIVKAI SAVLLLL
 LKHFKLNHVYQFEYMAQHLVFANCIPLILKFFNQNIMSYITAKNSISVLDYPHCVVHELPELTAESLEAG
 DSNQFCWRNLFSCINLLRILNKLTKWKHSRTMMLVVFKSAPILKRALKVKQAMQLYVLLKLLKVQTKYLG
 RQWRKSNMKTMSAIYQKVRHRLNDDWAYGNDLARPWDFQAECCALRANIERFNARRYDRAHSNPDFLPV
 DNCLQSVLGQRVDLPEDFQMNYDLWLEREVFSKPI SWEELLQ

TRTRPLEQKLI SEEDLAANDILDYKDDDDKV

Restriction Sites: SgfI-MluI

Cloning Scheme:

Cloning sites used for ORF Shuttling:



* The last codon before the Stop codon of the ORF

ACCN: NM_001270768

ORF Size: 2226 bp

OTI Disclaimer: The molecular sequence of this clone aligns with the gene accession number as a point of reference only. However, individual transcript sequences of the same gene can differ through naturally occurring variations (e.g. polymorphisms), each with its own valid existence. This clone is substantially in agreement with the reference, but a complete review of all prevailing variants is recommended prior to use. [More info](#)

OTI Annotation: This clone was engineered to express the complete ORF with an expression tag. Expression varies depending on the nature of the gene.

Components: The ORF clone is ion-exchange column purified and shipped in a 2D barcoded Matrix tube containing 10ug of transfection-ready, dried plasmid DNA (reconstitute with 100 ul of water).

Reconstitution Method:

1. Centrifuge at 5,000xg for 5min.
2. Carefully open the tube and add 100ul of sterile water to dissolve the DNA.
3. Close the tube and incubate for 10 minutes at room temperature.
4. Briefly vortex the tube and then do a quick spin (less than 5000xg) to concentrate the liquid at the bottom.
5. Store the suspended plasmid at -20°C. The DNA is stable for at least one year from date of shipping when stored at -20°C.

RefSeq: [NM_001270768.1](#), [NP_001257697.1](#)

RefSeq Size: 3138 bp

RefSeq ORF: 2229 bp

Locus ID: 85369

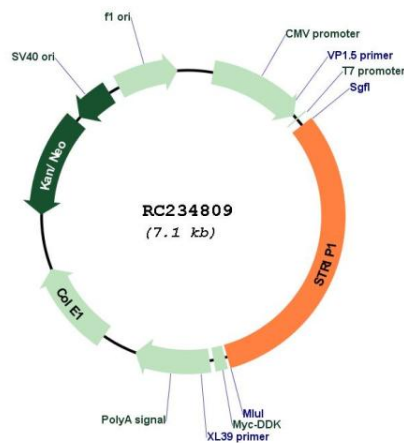
UniProt ID: [Q5VSL9](#)

Cytogenetics: 1p13.3

MW: 85.9 kDa

Gene Summary: This gene encodes a member of the striatin-interacting phosphatase and kinase complex, which is involved in localization of the Golgi body. The encoded protein participates in cytoskeletal organization. Alternative splicing results in multiple transcript variants. [provided by RefSeq, Jul 2012]

Product images:



Circular map for RC234809