

Product datasheet for **RC234559**

SRP72 (NM_001267722) Human Tagged ORF Clone

Product data:

Product Type:	Expression Plasmids
Product Name:	SRP72 (NM_001267722) Human Tagged ORF Clone
Tag:	Myc-DDK
Symbol:	SRP72
Synonyms:	BMFF; BMFS1; HEL103
Mammalian Cell Selection:	Neomycin
Vector:	pCMV6-Entry (PS100001)
E. coli Selection:	Kanamycin (25 ug/mL)



[View online »](#)

ORF Nucleotide Sequence:

>RC234559 representing NM_001267722
 Red=Cloning site Blue=ORF Green=Tags(s)

TTTTGTAATACGACTCACTATAGGGCGGCCGGAATTCGTCGACTGGATCCGGTACCGAGGAGATCTGCC
 GCC**CGCATCGCC**

ATGGCGAGCGCGGCAGCGGGGGTGTACGTACCTGCGCTGTGGAGTGAAGTGAACCGGTATGGCCAGA
 ACGGCGACTTCACGCGCGCTCTCAAGACCGTCAATAAGATACTACAGATCAACAAAGATGACGTAACCTGC
 CCTGCATTGTAAAGTGGTATGCCTTATCCAGAATGGAAGTTTCAAGGAAGCTTTGAATGTCATCAATACT
 CACACCAAAGTGTAGCCAATAACTCTCTCTCTTTGAAAAGGCATATTGCGAGTACAGGCTGAACAGAA
 TTGAGAATGCCTTGAAGACAATAGAAAGTGCCAAACAGCAGACAGACAAACTGAAGGAGCTTTATGGACA
 AGTGTATACCGTTTGAACGCTATGATGAATGCTTAGCAGTGTATAGAGATCTCGTCCGAAACTCCCAA
 GATGATTATGATGAGGAGAGGAAAACAAACCTTTCAGCAGTTGTTGCAGCTCAAAGCAATTGGGAAAAAG
 TGGTCCAGAGAACCTGGGCCTCCAAGAAGGCACACATGAGCTGTGCTACAACACTGCATGTGCACTGAT
 AGGCCAAGGCCAGCTGAACAGGCCATGAAAATCTACAAAAGCTGAAGATCTTTGCCCGCTTCATTA
 TCAGAAGACACTGACCAAATGTCTTTGACTCCAAGAAGAAAGTGAATTAACCAATGCGGAAGGAGTAG
 AGTTTAAGCTTTCCAAGAAACAACACTACAAGCTATAGAATTTAACAAAGCTTTACTTGCTATGTACACAAA
 CCAGGCTGAACAAATGCCGAAAAATCTGCCAGTTTACAGTCCCAAAGTCCCAGCATCTTTACCTGTG
 TTAATCCAAGCTGCCAGCTCTGCCGTGAAAAGCAGCACACAAAAGCAATAGAGCTGCTTCAGGAATTTT
 CAGATCAGCATCCAGAAAATGCAGCTGAAATTAAGCTGACCATGGCACAGTTGAAAATTTCTCAAGGTAA
 TATTTCTAAAGCATGTCTAATATTGAGAAGCATAGAGGAGTTAAGCATAAACAGGCATGGTATCTGCA
 TTAGTTACCATGTATAGCCATGAAGAAGATATTGATAGTCCATTGAGGTCTTACACAAAGCTATCCAGT
 GGTATCAAAAACCATCAGCCAAAATCTCCTGCTCATTGTCTTGTATAAGAGAAGCTGCAAACTTCAAAC
 CAAATATGGGCGGAAGAAGGAGGCAATTAGTGACCTACAACAGCTGTGGAACAAAATCCAAAAGATATT
 CACACCCTGGCACAGCTTATTTCTGCTTACTCACTTGTAGATCCAGAGAAAGCCAAAGCTCTTAGTAAAC
 ACTTGCCATCGTCAGATAGTATGTCTCTAAAAGTAGATGTTGAGGCTCTTGAAAATCTGCTGGTGTACT
 ATACATTCGGAAGAAGGGTGGAAAAGTTACTGGAGATAGTCAACCAAAGGAACAAGGACAGGAGATTTG
 AAAAGAAGAAAAAGAAAAAGAAAGGAAAATTCCTAAGAATTATGACCCAAAAGTTACCCAGATCCAG
 AAAGATGGCTGCCAATGCGAGAAGCTTCTTACTACCGGGAAGAAAGAAGGTAAAAGAAGGATCAGAT
 TGGAAAAGGACCCAGGAGCAACTGCAGGAGCTTCTGCAACTGGATGCCAGTAAAAGTGTGAGCAGC
 CCACCCACCTCCCAAGACCTGGCAGTGTGCAACAGTATCTGCCTCTACAAGTAACATCATACCCCAA
 GACACCAGAAACCTGCAGGGCTCCAGCAACAAAAGAAACAGCAACAGAAAAAGAAAGGAGGTTGAAA
 AGGTGGCTGG

ACGCGTACGCGGCCGCTCGAGCAGAAACTCATCTCAGAAGAGGATCTGGCAGCAATGATATCCTGGATT
 ACAAGGATGACGACGATAAGGTTTAA

Protein Sequence:

>RC234559 representing NM_001267722
 Red=Cloning site Green=Tags(s)

MASGGSGVSVPALWSEVNRVYQNGDFTRALKTVNKKILQINKDDVTALHCKVVVCLIQNGSFKEALNVINT
 HTKVLANNLSFEKAYCEYRLNRIENALKTIESANQQTDLKEL YGQVLYRLERYDECLAVYRDLVRNSQ
 DDYDEERKTNLSAVVAAQSNWEKVVPENLGLQEGTHELCYNTACALIGQGQLNQAMKILQKAEDLCRRSL
 SEDTDQNVFDSKKKVKLTNAEGVEFKLSKKQLQAIQEFNKALLAMYTNQAEQCRKISASLQSQSPEHLLPV
 LIQAAQLCREKQHTKAIPELLQEFSDQHPENAAEIKLTMAQLKISQGNISKACLILRSIEELKHKPGMVSA
 LVTMYSHEEDIDSAIEVFTQAIQWYQNHQPKSPAHLSLIREANFKLKYGRKKEAISDLQQLWKQNPDKDI
 HTLAQLISAYSLVDPEKAKALSKHLPSSDSMSLKVDFEALENSAGATYIRKKGKVTGDSQPKEQGGDL
 KKKKKKKKGLPKNYDPKVPDPERWLPMPERSYYRGRKKGKDKQIGKGTQGATAGASSELDAKSTVSS
 PPTSPRPGSAATVSASTSNIIPPRHQKAPAGAPATKKKQKQKQKGGKGGW

TRTRPLEQKLISEEDLAANDILDYKDDDDKV

Restriction Sites: SgfI-MluI

Cloning Scheme:



ACCN: NM_001267722

ORF Size: 1830 bp

OTI Disclaimer: The molecular sequence of this clone aligns with the gene accession number as a point of reference only. However, individual transcript sequences of the same gene can differ through naturally occurring variations (e.g. polymorphisms), each with its own valid existence. This clone is substantially in agreement with the reference, but a complete review of all prevailing variants is recommended prior to use. [More info](#)

OTI Annotation: This clone was engineered to express the complete ORF with an expression tag. Expression varies depending on the nature of the gene.

Components: The ORF clone is ion-exchange column purified and shipped in a 2D barcoded Matrix tube containing 10ug of transfection-ready, dried plasmid DNA (reconstitute with 100 ul of water).

- Reconstitution Method:**
1. Centrifuge at 5,000xg for 5min.
 2. Carefully open the tube and add 100ul of sterile water to dissolve the DNA.
 3. Close the tube and incubate for 10 minutes at room temperature.
 4. Briefly vortex the tube and then do a quick spin (less than 5000xg) to concentrate the liquid at the bottom.
 5. Store the suspended plasmid at -20°C. The DNA is stable for at least one year from date of shipping when stored at -20°C.

RefSeq: [NM_001267722.2](#)

RefSeq Size: 3710 bp

RefSeq ORF: 1833 bp

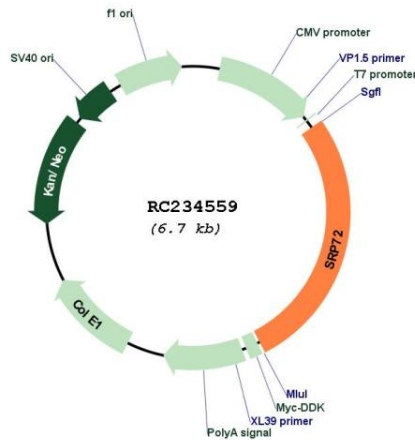
Locus ID: 6731

UniProt ID: [O76094](#)

Cytogenetics: 4q12
Protein Pathways: Protein export
MW: 68.3 kDa

Gene Summary: This gene encodes the 72 kDa subunit of the signal recognition particle (SRP), a ribonucleoprotein complex that mediates the targeting of secretory proteins to the endoplasmic reticulum (ER). The SRP complex consists of a 7S RNA and 6 protein subunits: SRP9, SRP14, SRP19, SRP54, SRP68, and SRP72, that are bound to the 7S RNA as monomers or heterodimers. SRP has at least 3 distinct functions that can be associated with the protein subunits: signal recognition, translational arrest, and ER membrane targeting by interaction with the docking protein. Mutations in this gene are associated with familial bone marrow failure. Alternatively spliced transcript variants encoding different isoforms have been found for this gene. [provided by RefSeq, Jun 2012]

Product images:



Circular map for RC234559