

Product datasheet for **RC234350**

FASTK (NM_001258461) Human Tagged ORF Clone

Product data:

Product Type:	Expression Plasmids
Product Name:	FASTK (NM_001258461) Human Tagged ORF Clone
Tag:	Myc-DDK
Symbol:	FASTK
Synonyms:	FAST
Mammalian Cell Selection:	Neomycin
Vector:	pCMV6-Entry (PS100001)
E. coli Selection:	Kanamycin (25 ug/mL)



[View online »](#)

ORF Nucleotide Sequence:

>RC234350 representing NM_001258461
 Red=Cloning site Blue=ORF Green=Tags(s)

TTTTGTAATACGACTCACTATAGGGCGGCCGGGAATTCGTCGACTGGATCCGGTACCGAGGAGATCTGCC
 GCC**CGGATCGCC**

ATGAGGAGGCCGCGGGGGGAACCCGGCCCCGGGCCCCGAGACCGACTGAGGGAGCGACCTGCGCAGGGC
 CCGGGGAGTCATGGTCTCCATCACCCAACCTCCATGCTTCGAGTCCTGCTCTCTGCTCAGACTCCCCTGC
 TCGGCTGTCTGGCCTGCTGCTGATCCCTCCAGTACAGCCCTGCTGTTTGGGGCCAGCAAATGGGGGAC
 CGGCTGTTGGAGGAGGCCCCAGTGCAGGTCCTGTGCAAGGACTGCAGCGGCTTCTGGAACAGGCGAAGA
 GCCCTGGGAGCTGCTGCGCTGGCTGGCCAGAACCCAGCAAGGTGCGCGCCACCCTACTCGGTGGC
 GCTTCGTCGTCTGGCCAGCTCTGGGGTCTCGGCCACGGCCCCCTCTGTGGAGCAGGTACACTGCAG
 GACTTGAGTCAGTCATCATCCGAAACTGCCCTCCTTTGACATTCACACCATCCACGTGTGTCTGCACC
 TTGCAGCTTACTTGGCTTCCATCTGATGGTCCCTGGTGTGTGCCCTGGAACAGGAGCGAAGGCTCCG
 CCTCCCTCGAAGCCACCTCCCCTTTGCAGCCCTTCTCGAGAGGCAAGGCCAGAGGAACTGACTCCC
 CACGTGATGGTGTCTCTGGCCAGCACCTGGCCCGGCACCGGTTGCGGGAGCCCCAGCTTCTGGAAGCCA
 TTGCCACTTCTGGTGGTTTCCAGAAACGCAACTCAGCAGCAAGGTGGTACAGAAGTTGGTCTGCCCTT
 TGGGCGACTGAACTACCTGCCCTGGAACAGCAGTTTATGCCCTGCCTTGGAGGATCCTGGCTCGGGAA
 GCAGGGGTGGCACCCCTGGCTACAGTCAACATCTTGATGTCACTGTGCCAAGTGCAGTGCCTGCCCTTCA
 GAGCCCTGCACTTTGTGTTTTCCCTGGCTTCACTCAACTACATCAGTGGCACCCCTCATGCTCTGATTGT
 GCGTCGCTACCTCCTCTGGTGGACACGGCGTGGAGCTGGAGCTCCAGGATACCGGGTCCCCGCCTT
 CCCCAGGACAGCAAGTGCATCTTTCCAGCCTCTCATCACGACCGTGGCCGCTGCAAGTACAGTC
 ACAAGGACATAGTAGCTGAGGGTTGCGCCAGCTGCTGGGGGAGGAGAAATACCGCCAGGACTGACTGT
 GCCTCCAGGCTACTGCACAGACTTCTGCTGTGCGCCAGCAGCTCTGGTGTGTGCTTCCCGTGAAGACC
 CAGGACCCCTTCTGCCATACCCACCAAGTCTGCCACAGGGCCAGGCTGCCTTAGCGCCACTACTC
 GAGACCTGCCAGAGGGTGGTGTGGTGTGCGGGAACGCTGGCATTCTGCCGGGACGGCCGGGTGCT
 GCTGGGCTCGAGGGCCCTGAGGGAGCGGCACCTAGGCCTGATGGGCTACCAGCTCCTGCCCTACCTTC
 GAGGAACTGGAGTCCAGAGAGGCTGCCCCAGCTCAAGAGCTACCTGAGGCAGAAGCTCCAGGCCCTGG
 GCCTGCGCTGGGGCCTGAAGGGGGC

ACGCGTACGCGGCCGCTCGAGCAGAAACTCATCTCAGAAGAGGATCTGGCAGCAAATGATATCTGGATT
 ACAAGGATGACGACGATAAGGTTTAA

Protein Sequence:

>RC234350 representing NM_001258461
 Red=Cloning site Green=Tags(s)

MRRPRGEPGRAPRPTEGATCAGPGESWSPSPNSMLRVLLSAQTSPARLSGLLLIPPVQPCCLGPSKWGD
 RPVGGGPSAGPVQGLQRLLEQAKSPGELLRWLQNPQSKVRAHHYSVALRRLGQLLGSRRPPPPVEQVTLQ
 DLSQLIIRNCPDFDIHTIHVCLHLAVLLGFPSDGPLVCALEQERRLRPPKPPPLQPLLRARPEELTP
 HVMVLLAQHLARHRLREPQLLEIAHFLVVQETQLSSKVQKLVLPFGRNLNPLPQQFMPCLERILARE
 AGVAPLATVNIIMSLCQLRCLPFRALHFVSPGFINYISGTPHALIVRRYLSLLDTAVELELPGYRGPRL
 PRRQQVPIFPQPLITDRARCKYSHKDIVAEGLRQLLGEKYRQDLVPPGYCTDFLLCASSSGAVLPVRT
 QDPFLPYPPRSCPQQAASSATTRDPAQRVVLVLRERWHFCRDGRVLLGSRALRERHLGLMGYQLLPLPF
 EELESQRGLPQLKSYLRQKLQALGLRWGPEGG

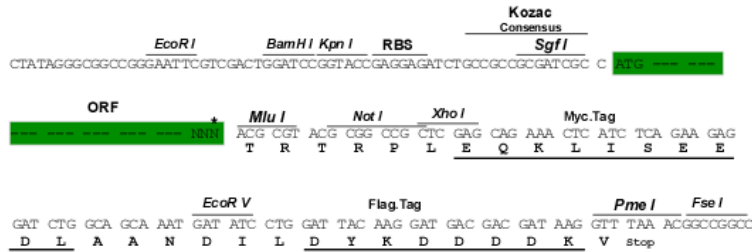
TRTRPLEQKLISEEDLAANDILDYKDDDDKV

Restriction Sites:

Sgfl-MluI

Cloning Scheme:

Cloning sites used for ORF Shutting:



* The last codon before the Stop codon of the ORF

ACCN: NM_001258461

ORF Size: 1566 bp

OTI Disclaimer: The molecular sequence of this clone aligns with the gene accession number as a point of reference only. However, individual transcript sequences of the same gene can differ through naturally occurring variations (e.g. polymorphisms), each with its own valid existence. This clone is substantially in agreement with the reference, but a complete review of all prevailing variants is recommended prior to use. [More info](#)

OTI Annotation: This clone was engineered to express the complete ORF with an expression tag. Expression varies depending on the nature of the gene.

Components: The ORF clone is ion-exchange column purified and shipped in a 2D barcoded Matrix tube containing 10ug of transfection-ready, dried plasmid DNA (reconstitute with 100 ul of water).

Reconstitution Method:

1. Centrifuge at 5,000xg for 5min.
2. Carefully open the tube and add 100ul of sterile water to dissolve the DNA.
3. Close the tube and incubate for 10 minutes at room temperature.
4. Briefly vortex the tube and then do a quick spin (less than 5000xg) to concentrate the liquid at the bottom.
5. Store the suspended plasmid at -20°C. The DNA is stable for at least one year from date of shipping when stored at -20°C.

RefSeq: [NM_001258461.1](#), [NP_001245390.1](#)
RefSeq Size: 1790 bp

RefSeq ORF: 1569 bp

Locus ID: 10922

UniProt ID: [Q14296](#)

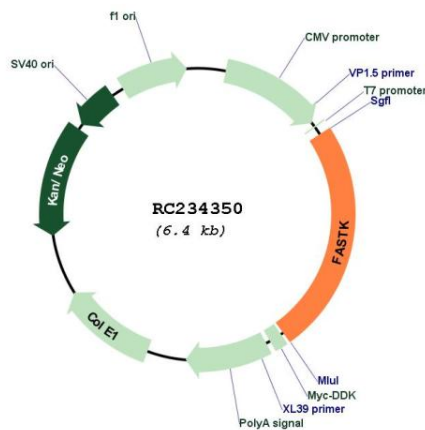
Cytogenetics: 7q36.1

Protein Families: Druggable Genome, Protein Kinase

MW: 58.6 kDa

Gene Summary: The protein encoded by this gene is a member of the serine/threonine protein kinase family. This kinase was shown to be activated rapidly during Fas-mediated apoptosis in Jurkat cells. In response to Fas receptor ligation, it phosphorylates TIA1, an apoptosis-promoting nuclear RNA-binding protein. The encoded protein is a strong inducer of lymphocyte apoptosis. Two transcript variants encoding different isoforms have been found for this gene. Other variants exist, but their full-length natures have not yet been determined. [provided by RefSeq, Jul 2008]

Product images:



Circular map for RC234350