

Product datasheet for **RC234239**

SPAG6 (NM_001253854) Human Tagged ORF Clone

Product data:

Product Type:	Expression Plasmids
Product Name:	SPAG6 (NM_001253854) Human Tagged ORF Clone
Tag:	Myc-DDK
Symbol:	SPAG6
Synonyms:	CFAP194; CT141; FAP194; pf16; Repro-SA-1
Mammalian Cell Selection:	Neomycin
Vector:	pCMV6-Entry (PS100001)
E. coli Selection:	Kanamycin (25 ug/mL)



[View online »](#)

ORF Nucleotide Sequence:

>RC234239 representing NM_001253854
 Red=Cloning site Blue=ORF Green=Tags(s)

TTTTGTAATACGACTCACTATAGGGCGGCCGGAATTCGTCGACTGGATCCGGTACCGAGGAGATCTGCC
 GCC**GCGATCGCC**

ATGCATTCACCTACCATGGATCTCTGGATACCTAATGGACAGGCAGGTGTAAATGTCTTTGCTGAGAACTC
 TTCTTCTGGACGTGGTCCCAACAATTCAACAGACTGCTGCTTTGGCTCTTGGGAGACTGGCCAATTATAA
 TGATGACCTAGCAGAAGCTGTTGTGAAGTGCACATTCTCCACAGCTTGTATTTCATTGGCAGAACAG
 AATCGCTTCTACAAGAAAGCAGCTGCCTTTGTGTACGAGCAGTTGGTAAACATTCTCCCCAGCTAGCTC
 AGGCAATAGTCGATTGTGGAGCACTGGATACGCTGGTCATATGCTTGAAGATTTTGACCCTGGAGTCAA
 GGAGGCTGCAGCCTGGGCACTTAGATATATTGCAAGACATAATGCAGAAGTGCACAAGCTGTGGTGGAT
 GCAGGAGCTGTTCTCTTTAGTACTCTGTATCCAGGAGCCAGAAATGCTTTGAAAAGGATTGCTGCTT
 CGGCCCTCAGTGATATTGCAAAGCATTCTCCAGAGTTAGCACAGACAGTAGTGGATGCAGGAGCTGTTGC
 TCAATTTAGCCAGATGATCCTGAACCCTGATGCTAAATGAAGCATCAGATCCTTTCAGCTCTCAGTCAG
 GTTTCAAAACATTCCGTGGATCTGGCAGAAATGGTTGTTGAAGCAGAGATTTTCCAGTTGACTTACCT
 GTCTGAAGGACAAGGATGAATACGTGAAGAAAAATGCTTCTACTTTAATTAGAGAGATTGCAAAACATAC
 ACCCGAGCTTTCACAGCTGGTAGTTAACGCAGGAGGGGTTGCTGCCGTGATTGACTGCATTGGGTCTGC
 AAAGGGAACACACGGCTGCCTGGCATCATGATGCTTGGTTATGTAGCAGCTCATTCTGAGAACCTAGCAA
 TGGCAGTCATCATTTCTAAGGGTGTACCCAGTTGTCAGTCTGCTTGTGAGAAGAACCGGAAGATCATAT
 TAAGGCTGCAGCTGCTTGGGCCCTTAGGACAGATTGGAAGACACACTCTGAACACGCACGGGCTGTTGCA
 GTCACAAAATACTTTGCCAGTTCTGCTTTCTTTGTACATGTCAACAGAAAGTTCTGAGGATCTCCAAGTAA
 AAAGTAAAAAGCCATAAAGAATATCCTGCAAAAATGTACCTACTTACCAGCCCTTGAACCATTTTCTATA
 TGATGCTCCTCCCAATATTCTGAAACATGTGGTTGGACAGTTTCAGTAAGGTGCTGCCGCATGATAGCAAA
 GCTCGACGACTTTTTGTAACAAGTGGTGGCCTTAAAAAGTTCAAGAGATAAAGCAGAAGCTGTTCTC
 TCCTTCAAGAATACATCAACAGTATTAACAGTTGTACCCCGAGGAAATAGTGAGGTATTATCCCTGG
 ATATTCAGATACACTTCTGCAGAGGGTGGACAGCTATCAACCACTTAATAAC

ACGCGTACGCGGCCGCTCGAGCAGAAACTCATCTCAGAAGAGGATCTGGCAGCAATGATATCCTGGATT
 ACAAGGATGACGACGATAAGGTTTAA

Protein Sequence:

>RC234239 representing NM_001253854
 Red=Cloning site Green=Tags(s)

MHSLTMDLWIPNGQAGVMSLLRLLLLDVVPTIQQTAAALGRLANYNDLAEAVVKCDILPQLVYSLAEQ
 NRFYKKAFAFVLRVAVGKHSPQLAQAIIVDCGALDTLVICLEDVDPGVKEAAAWALRYIARHNAELSQAVVD
 AGAVPLLVLCIQEPEIALKRIAASALSDIAKHSPELAQTVVVDAGAVAHLAQMILNPDALKHKHILSALSQ
 VSKHSVDLAEMVVEAEIFPVVLTCLKDKDEYVKKNASTLIREIAKHTPELSQLVNVNAGGVAVIDCIGSC
 KGNTLPGIMMLGYVAAHSENLAMAVIIISKGVPQLSVCLSEEPEDHIKAAAALWALGQIGRHTPEHARAVA
 VTNTLPVLLSLYMSTESSEDLQVKSCKAIKNILQKCTYLPALPFLYDAPPNILKHVVGGQFQSKVLPHDSK
 ARRLFVTSGLKVKVEIKAEPSLLQVEYINSINSCYPEEIVRYSPGYSDTLLQRVDSYQPLNN

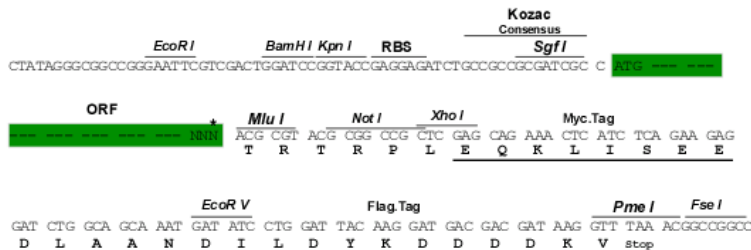
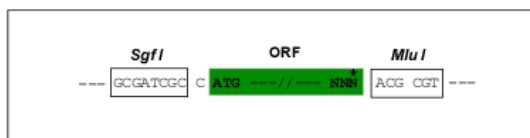
TRTRPLEQ**KL**ISEEDLAANDILDYKDDDDKV

Restriction Sites:

Sgfl-MluI

Cloning Scheme:

Cloning sites used for ORF Shuttling:



* The last codon before the Stop codon of the ORF

ACCN: NM_001253854

ORF Size: 1452 bp

OTI Disclaimer: The molecular sequence of this clone aligns with the gene accession number as a point of reference only. However, individual transcript sequences of the same gene can differ through naturally occurring variations (e.g. polymorphisms), each with its own valid existence. This clone is substantially in agreement with the reference, but a complete review of all prevailing variants is recommended prior to use. [More info](#)

OTI Annotation: This clone was engineered to express the complete ORF with an expression tag. Expression varies depending on the nature of the gene.

Components: The ORF clone is ion-exchange column purified and shipped in a 2D barcoded Matrix tube containing 10ug of transfection-ready, dried plasmid DNA (reconstitute with 100 ul of water).

Reconstitution Method:

1. Centrifuge at 5,000xg for 5min.
2. Carefully open the tube and add 100ul of sterile water to dissolve the DNA.
3. Close the tube and incubate for 10 minutes at room temperature.
4. Briefly vortex the tube and then do a quick spin (less than 5000xg) to concentrate the liquid at the bottom.
5. Store the suspended plasmid at -20°C. The DNA is stable for at least one year from date of shipping when stored at -20°C.

RefSeq: [NM_001253854.2](#)

RefSeq Size: 2989 bp

RefSeq ORF: 1455 bp

Locus ID: 9576

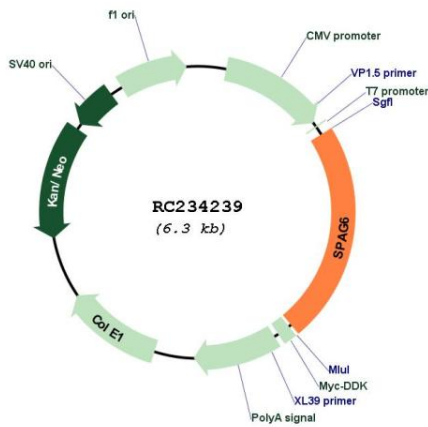
UniProt ID: [O75602](#)

Cytogenetics: 10p12.2

MW: 52.9 kDa

Gene Summary: The correlation of anti-sperm antibodies with cases of unexplained infertility implicates a role for these antibodies in blocking fertilization. Improved diagnosis and treatment of immunologic infertility, as well as identification of proteins for targeted contraception, are dependent on the identification and characterization of relevant sperm antigens. The protein expressed by this gene is recognized by anti-sperm antibodies from an infertile man. This protein localizes to the tail of permeabilized human sperm and contains eight contiguous armadillo repeats, a motif known to mediate protein-protein interactions. Studies in mice suggest that this protein is involved in sperm flagellar motility and maintenance of the structural integrity of mature sperm. Several transcript variants encoding different isoforms have been found for this gene. [provided by RefSeq, Dec 2011]

Product images:



Circular map for RC234239