

## Product datasheet for **RC234174**

### **ZNF331 (NM\_001253798) Human Tagged ORF Clone**

#### **Product data:**

Product Type:	Expression Plasmids
Product Name:	ZNF331 (NM_001253798) Human Tagged ORF Clone
Tag:	Myc-DDK
Symbol:	ZNF331
Synonyms:	RITA; ZNF361; ZNF463
Mammalian Cell Selection:	Neomycin
Vector:	pCMV6-Entry (PS100001)
E. coli Selection:	Kanamycin (25 ug/mL)



[View online »](#)

**ORF Nucleotide Sequence:**

>RC234174 representing NM\_001253798  
 Red=Cloning site Blue=ORF Green=Tags(s)

TTTTGTAATACGACTCACTATAGGGCGGCCGGAATTCGTCGACTGGATCCGGTACCGAGGAGATCTGCC  
 GCC**CGCATCGCC**

ATGGCCCAGGGTTTGGTGACGTTGCGCCGACGTAGCCATAGACTTTTCTCAGGAGGAGTGGGCCTGTCTGA  
 ACTCTGCTCAGAGGGACCTGTACTGGGACGTGATGCTGGAGAACTACAGTAACTTGGTCTCACTGGATTT  
 GGAGTCAGCATATGAAAATAAGAGTTTACCTACAGAAAAAACATTCATGAAATAAGGGCTTCCAAAAGG  
 AATTCAGATAGAAGAAGTAAATCCCTTGGCCGTAAGTGGATATGTGAAGGTACGCTTGAAGACCACAGC  
 GCTCCAGAGGGAGGTATGTCAATCAGATGATCAATTATGTCAAAGACCTGCTACTAGAGAAGGCAC  
 CCCTCCTAGAACACATCAGAGACATCATAAGGAGAATTCCTTTGAATGTAAGGACTGTGGGAAGGCCTTT  
 AGTCGTGGCTATCAACTTAGTCAACATCAGAAAAATCCATACTGGTGAGAAACCTTATGAATGTAAGAAT  
 GTAAGAAGGCCTCCGTTGGGGCAATCAGCTTACTCAACATCAAAAAATTCATACTGGGGAGAAGCCCTA  
 CGAATGTAAGACTGTGGGAAGGCTTTTCGATGGGGCTCAAGCCTCGTTATTCATAAGAGGATTCATACT  
 GGTGAAAAACCTATGAATGTAAAGACTGTGGAAGGCCTTTCGGCGTGGTGATGAGCTCACTCAGACC  
 AGAGATCCACACTGGGGAGAAAGACTACGAATGCAAAGACTGTGGGAAGACCTTTAGCCGTGTGTATAA  
 ACTTATTCAGCACAAGAGAATTCATAGTGGGGAGAAGCCTTACGAGTGTAAAGACTGTGGGAAGGCCTTT  
 ATTTGTGGTTCAAGCCTCATTACGATAAAAGAATTCACACAGGTGAGAAACCTATGAATGTCAAGAAT  
 GTGGGAAGGCCTTACTCGAGTCAATTACCTTACTCAGCATCAGAAGTCCACACCGGTGAGAAGCCTCA  
 CGAATGTAAGGAGTGTGGGAAGGCCTTTCGCTGGGGTTCGAGCCTCGTTAAGCACGAGAGGATACATACG  
 GGCGAGAAGCCGTACAAGTGCACAGAATGTGGGAAGGCCTTCAATTGTGGCTATCACCTCACTCAGCAGC  
 AGAGAATCCACACAGGCCAAACCCCGTATAAATGTAAGGAGTGTGGGAAGGCCTTTCAATTTGGATCGAG  
 CCTCGTGAACATGAGAGAATTCATACCGGGGTGAAACCTATGGGTGTACAGAATGTGGGAAGAGCCTTT  
 AGTCACGGCCATCAGCTTACACAACATCAGAAAAACGCACAGTGGGGCGAAATCCTACGAATGTAAGGAGT  
 GCGGGAAGGCATGTAACCACCTAAACCATCTCCGAGAACATCAGAGGATCCACAACAGT

**ACGCGT**ACGCGGCCGCTCGAGCAGAAACTCATCTCAGAAGAGGATCTGGCAGCAAATGATATCCTGGATT  
 ACAAGGATGACGACGATAAGGTTTAA

**Protein Sequence:**

>RC234174 representing NM\_001253798  
 Red=Cloning site Green=Tags(s)

MAQGLVTFADVAIDFSQEEWACLNSAQRDL YWDVMLENYSNLVSLDLESAYENKSLPTEKNIHEIRASKR  
 NSDRRSKSLGRNWICEGTLERPQRSRGRVYVQMIINYVKRPATREGTPPRTHQRHHKENSFECKDCGKAF  
 SRGYQLSQHQKIHTGEKPYECKECKKAFRWGNQLTQHQQIHTGEKPYECKDCGKAFRWGSSLVIHKRIHT  
 GEKPYECKDCGKAFRRGDEL TQHQRFHTGEKDYECKDCGKTF SRVYKLIQHKRIHSGEKPYECKDCGKAF  
 ICGSSLIQHKRIHTGEKPYEQECGKAFTRVNYLTQHQQIHTGEKPHECKECKGAFRWGSSLVKHERIHT  
 GEKPYKCTECGKAFNCGYHLTQHERIHTGETPYKCKECKGAFIYGSSLVKHERIHTGVKPYGCTECGKSF  
 SHGHLTQHQT HSGAKSYECKECKKACNHLNHLREHQRIHNS

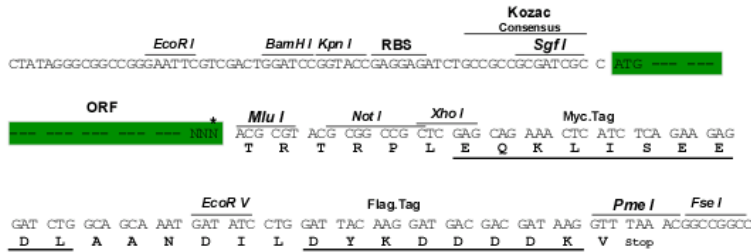
**TR**TRPLEQKLISEEDLAANDILDYKDDDDKV

**Restriction Sites:**

Sgfl-Mlul

**Cloning Scheme:**

Cloning sites used for ORF Shutting:



\* The last codon before the Stop codon of the ORF

**ACCN:** NM\_001253798

**ORF Size:** 1389 bp

**OTI Disclaimer:** The molecular sequence of this clone aligns with the gene accession number as a point of reference only. However, individual transcript sequences of the same gene can differ through naturally occurring variations (e.g. polymorphisms), each with its own valid existence. This clone is substantially in agreement with the reference, but a complete review of all prevailing variants is recommended prior to use. [More info](#)

**OTI Annotation:** This clone was engineered to express the complete ORF with an expression tag. Expression varies depending on the nature of the gene.

**Components:** The ORF clone is ion-exchange column purified and shipped in a 2D barcoded Matrix tube containing 10ug of transfection-ready, dried plasmid DNA (reconstitute with 100 ul of water).

**Reconstitution Method:**

1. Centrifuge at 5,000xg for 5min.
2. Carefully open the tube and add 100ul of sterile water to dissolve the DNA.
3. Close the tube and incubate for 10 minutes at room temperature.
4. Briefly vortex the tube and then do a quick spin (less than 5000xg) to concentrate the liquid at the bottom.
5. Store the suspended plasmid at -20°C. The DNA is stable for at least one year from date of shipping when stored at -20°C.

**RefSeq:** [NM\\_001253798.2](#)

**RefSeq Size:** 4167 bp

**RefSeq ORF:** 1392 bp

**Locus ID:** 55422

**UniProt ID:** [Q9NQX6](#)

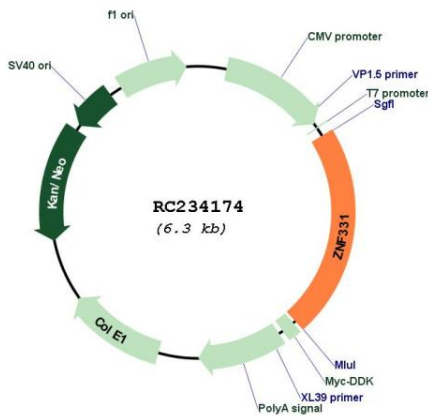
**Cytogenetics:** 19q13.42

**Protein Families:** Transcription Factors

**MW:** 54.2 kDa

**Gene Summary:** This gene encodes a zinc finger protein containing a KRAB (Kruppel-associated box) domain found in transcriptional repressors. This gene may be methylated and silenced in cancer cells. This gene is located within a differentially methylated region (DMR) and shows allele-specific expression in placenta. Alternative splicing and the use of alternative promoters results in multiple transcript variants encoding the same protein. [provided by RefSeq, Nov 2015]

**Product images:**



Circular map for RC234174