

Product datasheet for **RC234162**

CREB3L3 (NM_001271996) Human Tagged ORF Clone

Product data:

Product Type:	Expression Plasmids
Product Name:	CREB3L3 (NM_001271996) Human Tagged ORF Clone
Tag:	Myc-DDK
Symbol:	CREB3L3
Synonyms:	CREB-H; CREBH; HYST1481; HYTG2
Mammalian Cell Selection:	Neomycin
Vector:	pCMV6-Entry (PS100001)
E. coli Selection:	Kanamycin (25 ug/mL)



[View online »](#)

ORF Nucleotide Sequence:

>RC234162 representing NM_001271996
 Red=Cloning site Blue=ORF Green=Tags(s)

TTTTGTAATACGACTCACTATAGGGCGGCCGGAATTCGTCGACTGGATCCGGTACCGAGGAGATCTGCC
 GCC**GCGATCGCC**

ATGAATACGGATTAGCTGCTGGAAGATGGCTTCTGCTGCCTCCATGGACCCATCGACAGCTTTG
 AGCTCCTGGATCTCCTGTTTACCGGCAGGACGGCATCCTGAGACACGTGGAGCTGGGCGAGGGCTGGG
 TCACGTCAAGGACCAGCAGGTCCTGCCAAACCCGACTCTGACGACTTCCTCAGCTCCATCCTGGGCTCT
 GGAGACTCACTGCCAGCTCCCCACTCTGGTCCCCGAAGGCAGTGATAGTGGCATCTCCGAAGACCTCC
 CCTCCGACCCCCAGGACACCCCTCCACGCAGGGACCAGCCACCTCCCCCGCGGCTGCCATCTGCCCA
 GCCTGGCAAGGGGCCCTGCCTCTCTATCATCTGGCAACTTTGCTCCACCACAACCCAGGGCCAGTG
 ATCCAAGTACCTGAAGCCTCTGTACCATAGACCTGGAATGTGGAGCCCAGGAGGAAGGATCTGTGCTG
 AGAAGCCGGCTGATCCGGTGGACCTGTCCCACGATGCAATCTCACCGTAAAGACCTCCTCTTCGGG
 CAGCAGTGGGACCTGCATCACCTGGGGCCTCCTACCTCTGCGACCTGGGCTGGGACTGTCAGGAG
 CTGGTGTCCACGAGGATGAGAAGAAGCTGCTGGCTAAAGAAGGCATCACCTGCCCACTCAGCTGCCCC
 TCACTAAGTACGAGGAGCGAGTGTGAAAAAATCCGCCGAAAAATCCGGAACAAGCAGTCGGCGCAAGA
 AAGCAGGAAGAAGAAGAAGGAATATATCGATGGCTGGAGACTCGGATGTGAGCTTGCACTGCTCAGAAT
 CAGGAGTTACAGAGGAAAGTCTTGATCTCGAGAAGCAAAACCTGTCCCTCTGGAGCAACTGAAGAAAC
 TCCAGGCCATTGTGGTGCAGTCCACCAGCAAGTCAGCCCAGACAGGCACCTGTGTGCGAGTCTGTTGCT
 GTCCTTTGCCCTCATCATCTCCCTCCATCAGCCCTTTGGCCCAACAAAACCGAGAGCCCTGGGGAC
 TTTGCGCTGTACGAGTGTCTCCAGAACTTGCACAACGATGCTGCCTCCCGCTGGCTGCTGATGCTG
 TGCCAGGCTCCGAGGCCCCAGGACCCCGACCCGAGGCTGACACAACCCGAGAAGAGTCTCCAGGAAGCCC
 CGGGGCAGACTGGGGCTTCCAGGACACCCGAACTGACCAATTCGACGAGGAGCTGGACAACGCCACC
 CTGGTCTGAGGAATGCAACAGAGGGGCTGGGCCAGTGCCTGCTGGACTGGTGGCGCTGGGCCGA
 GCACTGGCTCAGGACGTGACAGGCTGGAGGCGCGGGAGACGAGCTG

ACGCGTACGCGGCCGCTCGAGCAGAACTCATCTCAGAAGAGGATCTGGCAGCAATGATATCCTGGATT
 ACAAGGATGACGACGATAAGGTTTAA

Protein Sequence:

>RC234162 representing NM_001271996
 Red=Cloning site Green=Tags(s)

MNTDLAAGKMASAACSMIDPIDSFELLDLLFDRQDGI LRHVELGEGWGHVKDQVLPNPDSDFLSSILGS
 GDSLPSSPLWSPEGSDSGISEDLPDPQDTPPRSGPATSPAGCHPAQPGKGPCLSYHPGNSCSTTTPGPV
 IQVPEASVTIDLEMWSPGGRI CAEKPADPVDLSPRCNL TVKDLLL SGSSGDLHHLGASYLLRPGAGHCQE
 LVLTEDEKLLAKEGITLPTQLPLTKYEERVLKIRRKIRNKQSAQESRKKKKEYIDGLETRMSACTAQN
 QELQRKVLHLEKQNL SLLLEQLKKLQAI VVQSTSKSAQTGTCVAVLLL SFALIILPSISPFGNKTESPGD
 FAPVRVFSRTLHNDAA SRVAADAVPGSEAPGPRPEADTTREESPGSPGADWGFQDTANL TNSTEELDNAT
 LVLRNATEGLGQVALLDWWAPGPSTGSGRAGLEAAGDEL

TRTRPLEQKLISEEDLAANDILDYKDDDDKV

Restriction Sites:

Sgfl-Mlul

Cloning Scheme:

Cloning sites used for ORF Shutting:



* The last codon before the Stop codon of the ORF

ACCN: NM_001271996

ORF Size: 1377 bp

OTI Disclaimer: The molecular sequence of this clone aligns with the gene accession number as a point of reference only. However, individual transcript sequences of the same gene can differ through naturally occurring variations (e.g. polymorphisms), each with its own valid existence. This clone is substantially in agreement with the reference, but a complete review of all prevailing variants is recommended prior to use. [More info](#)

OTI Annotation: This clone was engineered to express the complete ORF with an expression tag. Expression varies depending on the nature of the gene.

Components: The ORF clone is ion-exchange column purified and shipped in a 2D barcoded Matrix tube containing 10ug of transfection-ready, dried plasmid DNA (reconstitute with 100 ul of water).

Reconstitution Method:

1. Centrifuge at 5,000xg for 5min.
2. Carefully open the tube and add 100ul of sterile water to dissolve the DNA.
3. Close the tube and incubate for 10 minutes at room temperature.
4. Briefly vortex the tube and then do a quick spin (less than 5000xg) to concentrate the liquid at the bottom.
5. Store the suspended plasmid at -20°C. The DNA is stable for at least one year from date of shipping when stored at -20°C.

RefSeq: [NM_001271996.2](#)
RefSeq Size: 2618 bp

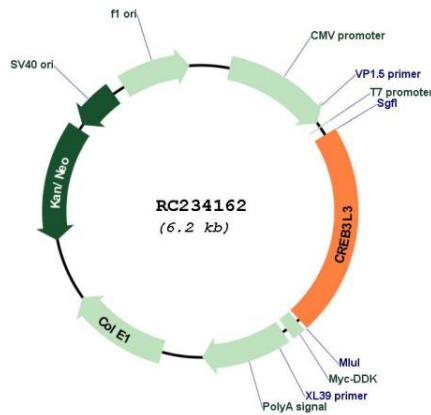
RefSeq ORF: 1380 bp

Locus ID: 84699

UniProt ID: [Q68CJ9](#)

Cytogenetics:	19p13.3
Protein Families:	Transcription Factors
Protein Pathways:	Huntington's disease, Melanogenesis, Prostate cancer
MW:	49.3 kDa
Gene Summary:	This gene encodes a member of the basic-leucine zipper family and the AMP-dependent transcription factor family. The encoded protein is localized to the endoplasmic reticulum and acts as a transcription factor activated by cyclic AMP stimulation. The encoded protein binds the cyclic AMP response element (CRE) and the box-B element and has been linked to acute inflammatory response, hepatocellular carcinoma, triglyceride metabolism, and hepcidin expression. Alternative splicing results in multiple transcript variants. [provided by RefSeq, Dec 2012]

Product images:



Circular map for RC234162