

Product datasheet for RC233997

PIM1 (NM_001243186) Human Tagged ORF Clone

Product data:

Product Type: Expression Plasmids
 Product Name: PIM1 (NM_001243186) Human Tagged ORF Clone
 Tag: Myc-DDK
 Symbol: PIM1
 Synonyms: PIM
 Mammalian Cell Selection: Neomycin
 Vector: pCMV6-Entry (PS100001)
 E. coli Selection: Kanamycin (25 ug/mL)
 ORF Nucleotide Sequence: >RC233997 representing NM_001243186
 Red=Cloning site Blue=ORF Green=Tags(s)

TTTTGTAATACGACTCACTATAGGGCGGCCGGAATTCGTCGACTGGATCCGGTACCGAGGAGATCTGCC
 GCCCGCATCGCC

CTGCCGACGAGCCCCACGAGCCGCTACCCCGCCGTTCTCAGCGCTGCCGACCCCGCTGGCGGCCCT
 CCCGCCGAGTCCCGGACGCGCCCTCAGTTGTCTCCGACTCGCCCTCGGCCTCCGCGCCAGCCGAC
 CCACAGCCGCAACGCCACCCGACGCCACAGCCACAGCCACAGCCGAGCCATAGCCTTCGGCACAGCCCC
 GGCTCCGGCTCCTGCGGACGCTCCTCTGGGACCGTCCCTGCGCCGACATCCTGGAGTTGGGATGCTCT
 TGTCCAAATCAACTCGTTGCCACCTGCGCGCCGCGCCCTGCAACGACCTGCACGCCACCAAGCTGGC
 GCCCGCAAGGAGAAGGAGCCCTGGAGTCGAGTACCAGGTGGGCCCGCTACTGGGACGCGCGCTTC
 GGCTCGGTCTACTCAGGCATCCGCGTCTCCGACAACTTGCCGGTGGCCATCAAACACGTGGAGAAGGACC
 GGATTTCCGACTGGGAGAGCTGCCTAATGGCACTCGAGTGCCCATGGAAGTGGTCTGTGAAGAAGGT
 GAGCTCGGGTTTCTCCGGCGTCATTAGGCTCCTGGACTGGTTCGAGAGGCCCGACAGTTTCGTCCTGATC
 CTGGAGAGGCCGAGCCGGTGAAGATCTTTCGACTTCATCACGAAAGGGGAGCCCTGCAAGAGGAGC
 TGGCCCGCAGTCTTCTGGCAGGTGCTGGAGGCCGTGCGGCACTGCCACAACGCGGGGTGCTCCACCG
 CGACATCAAGGACGAAAACATCCTTATCGACCTCAATCGCGCGAGCTCAAGCTCATCGACTTCGGGTCG
 GGGCGCTGCTCAAGGACACCGTCTACAGGACTTCGATGGGACCCGAGTGTATAGCCCTCAGAGTGGA
 TCCGCTACCATCGCTACCATGGCAGGTGCGCGGCACTGCTGGTCCCTGGGATCCTGCTGATGATGATG
 GTGTGGAGATATTCCTTTTCGAGCATGACGAAGAGATCATCAGGGGCCAGGTTTTTTCAGGCAGAGGGTC
 TCTTCAGAATGTCAGCATCTCATTAGATGGTGTGCTTGGCCCTGAGACCATCAGATAGGCCAACCTTGAAG
 AAATCCAGAACCATCCATGGATGCAAGATGTTCTCCTGCCCGAGGAACTGCTGAGATCCACCTCCACAG
 CCTGTCGCCGGGCCAGCAA

ACGCGTACGCGGCCGCTCGAGCAGAACTCATCTCAGAAGAGGATCTGGCAGCAAATGATATCCTGGATT
 ACAAGGATGACGACGATAAGGTTTAA



Protein Sequence: >RC233997 representing NM_001243186
 Red=Cloning site Green=Tags(s)

LPHEPHEPLTPPFSA LPDPAGAPSRQRQPQLSSDPSAFRASRSHSRNATRSHSHSPRHSLRHSP
 GSGSCGSSGHRPCADILEVGMLLSKINSLAHLRAAPCNDLHATKLAPGKEKEPLESQYQVGPLLGSGGF
 GSVYSGIRVSDNLPVAIKHVEKDRISDWGELPNGTRVPMEVLLKKVSSGFSGVIRLLDWFERPDSFVLI
 LERPEPVQDLDFDITERGALQEELARSFFWQVLEAVRHCHNCVGLHRDIKDENILIDLNRGELKLIDFGS
 GALLKDYTYTDFDGRVYSPPEWIRYHRVHGRSAVWSL GILLYDMVCGDIPFEHDEEIIIRGQVFFRQRV
 SSECQHLIRWCLALRPSDRPTFEEIQNHPPMQDVLLPQETA E IHLHSLSPGPSK

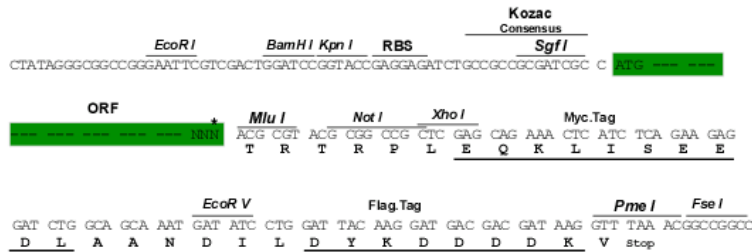
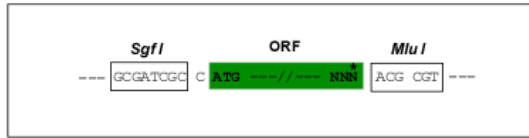
TRTRPLEQKLISEEDLAANDILDYKDDDDKV

Restriction Sites:

SgfI-MluI

Cloning Scheme:

Cloning sites used for ORF Shuttling:



* The last codon before the Stop codon of the ORF

ACCN: NM_001243186

ORF Size: 1212 bp

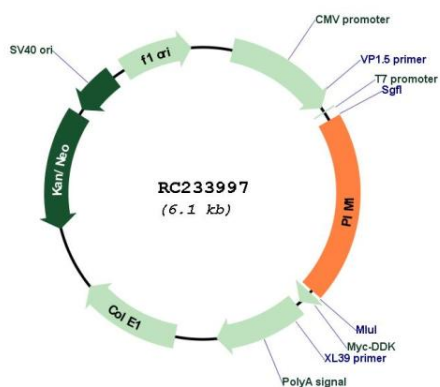
OTI Disclaimer: The molecular sequence of this clone aligns with the gene accession number as a point of reference only. However, individual transcript sequences of the same gene can differ through naturally occurring variations (e.g. polymorphisms), each with its own valid existence. This clone is substantially in agreement with the reference, but a complete review of all prevailing variants is recommended prior to use. [More info](#)

OTI Annotation: This clone was engineered to express the complete ORF with an expression tag. Expression varies depending on the nature of the gene.

Components: The ORF clone is ion-exchange column purified and shipped in a 2D barcoded Matrix tube containing 10ug of transfection-ready, dried plasmid DNA (reconstitute with 100 ul of water).

Reconstitution Method:	<ol style="list-style-type: none">1. Centrifuge at 5,000xg for 5min.2. Carefully open the tube and add 100ul of sterile water to dissolve the DNA.3. Close the tube and incubate for 10 minutes at room temperature.4. Briefly vortex the tube and then do a quick spin (less than 5000xg) to concentrate the liquid at the bottom.5. Store the suspended plasmid at -20°C. The DNA is stable for at least one year from date of shipping when stored at -20°C.
RefSeq:	NM_001243186.2
RefSeq Size:	2751 bp
RefSeq ORF:	1215 bp
Locus ID:	5292
UniProt ID:	P11309
Cytogenetics:	6p21.2
Protein Families:	Druggable Genome, ES Cell Differentiation/IPS, Protein Kinase
Protein Pathways:	Acute myeloid leukemia, Jak-STAT signaling pathway
MW:	45.8 kDa
Gene Summary:	<p>The protein encoded by this gene belongs to the Ser/Thr protein kinase family, and PIM subfamily. This gene is expressed primarily in B-lymphoid and myeloid cell lines, and is overexpressed in hematopoietic malignancies and in prostate cancer. It plays a role in signal transduction in blood cells, contributing to both cell proliferation and survival, and thus provides a selective advantage in tumorigenesis. Both the human and orthologous mouse genes have been reported to encode two isoforms (with preferential cellular localization) resulting from the use of alternative in-frame translation initiation codons, the upstream non-AUG (CUG) and downstream AUG codons (PMIDs:16186805, 1825810).[provided by RefSeq, Aug 2011]</p>

Product images:



Circular map for RC233997