

Product datasheet for RC233940

GORASP2 (NM_001201428) Human Tagged ORF Clone

Product data:

| | |
|---------------------------|--|
| Product Type: | Expression Plasmids |
| Product Name: | GORASP2 (NM_001201428) Human Tagged ORF Clone |
| Tag: | Myc-DDK |
| Symbol: | GORASP2 |
| Synonyms: | GOLPH6; GRASP55; GRS2; p59 |
| Mammalian Cell Selection: | Neomycin |
| Vector: | pCMV6-Entry (PS100001) |
| E. coli Selection: | Kanamycin (25 ug/mL) |
| ORF Nucleotide Sequence: | >RC233940 representing NM_001201428 Red=Cloning site Blue=ORF Green=Tags(s) |

TTTTGTAATACGACTCACTATAGGGCGCCGGGAATTCGTCGACTGGATCCGGTACCGAGGAGATCTGCC
GCC**CGATCGC**C

ATGCTTATCTATAGCAGCAAACATTGGAAGTGCAGAGACCTCAGTCACACCAAGTAACCTGTGGGGCG
GCCAGGGCTTATTGGGAGTGAGCATTGTTTCTGCAGCTTTGATGGGGCAAATGAAAATGTTTGGCATGT
GCTGGAGTGGAATCAAATTCCTGCAGCACTGGCAGGCTTAGACCACACAGTGATTATATAATTGGA
GCAGATACAGTCATGAATGAGTCTGAAGATCTATTCAGCCTTATCGAAACACATGAAGCAAACATTGA
AACTGTATGTGTACAACACAGACTGATAACTGTCGAGAAGTGATTATTACACCAAATTCGCATGGGG
TGGAGAAGGCAGCCTAGGATGTGGCATTGGATATGGTTATTTGCATCGAATACCTACACGCCATTTGAG
GAAGGAAAGAAAATTTCTCTCCAGGACAAATGGCTGGTACACCTATTACACCTCTTAAAGATGGGTTTA
CAGAGGTCAGCTGTCCTCAGTTAATCCCCGCTTTTGTACCACCAGGAACCTACAGGAATTGAACAGAG
TCTGACTGGACTTTCTATTAGCTCAACTCCACCAGCTGTCAGTAGTGTCTCAGTACAGGTGTACCAACA
GTACCGTTATTGCCACCACAAGTAAACCAGTCCCTCACTTCTGTGCCACCAATGAATCCAGCTACTACAT
TACCAGGTCTGATGCCTTACCAGCAGGACTGCCAACCTCCCCAACCTCAACCTCAACCTCCCAGCACC
ACACATCATGCCAGGGTGGCTTACCAGAAGTGTAAACCCAGGCTGCCACCTCTTCCCTCCATGCCT
CCCCGAAACTTACCTGGCATTGCACCTCTCCCCCTGCCATCCGAGTTCCTCCCGCATTCCCTTGGTTC
CAGAGAGCTCTTCTGCAGCAAGCTCAGGAGAGCTGTCTTCCCTCCCGCCACCAGCAACGCACCCCTC
CGACCCTGCCACAACACTGCAAAGGCAGACGCTGCCTCCTCACTCACTGTGGATGTGACCCCCCACT
GCCAAGGCCCCACCACCGTTGAGGACAGAGTCGGCGACTCCACCCAGTCAGCGAGAAGCCTGTTTCTG
CGGCTGTGGATGCCAATGCTTCTGAGTCACT

ACGCGTACGCGGCCGCTCGAGCAGAAACTCATCTCAGAAGAGGATCTGGCAGCAAATGATATCCTGGATT
ACAAGGATGACGACGATAAGGTTTAA



[View online »](#)

Protein Sequence: >RC233940 representing NM_001201428
 Red=Cloning site Green=Tags(s)

MLIYSSKTLELRETSVTPSNLWGGQGLLGVSIRFCSDGANENVWHVLEVESNSPAALAGLRPHSDYIIG
 ADTVMNESEDLFLSIIETHEAKPLKLYVYNTDNDNCREVIITPNSAWGEGSLGCGIGYGLHRIPTRPFE
 EGKKISLPGQMAGTPIITPKDGFTEVQLSSVNPPSLSPPGTTGIEQSLTGLSISSTPPAVSSVLSTGVPT
 VPLLPPQVQNQSLTSVPPMNPATTL PGLMPLPAGLPNLPNLNLNLPAPHIMPGVGLPELVNPLPPLPSMP
 PRNLPGIAPLPLPSEFLPSFPLVPESSAASSGELLSSLPPTSNDPSPDPTTTAKADAASSLTVDVTPPT
 AKAPTTVEDRVGDSTPVSEKPVSAAVDANASESP

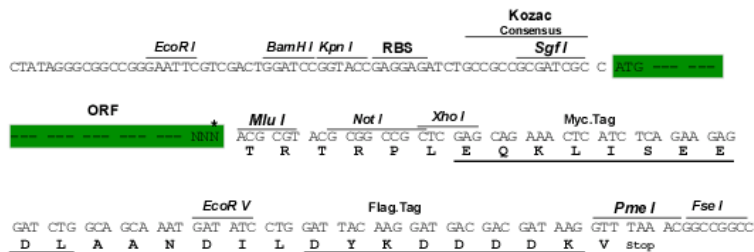
TRTRPLEQKLISEEDLAANDILDYKDDDDKV

Restriction Sites:

SgfI-MluI

Cloning Scheme:

Cloning sites used for ORF Shuttling:



* The last codon before the Stop codon of the ORF

ACCN: NM_001201428

ORF Size: 1152 bp

OTI Disclaimer: The molecular sequence of this clone aligns with the gene accession number as a point of reference only. However, individual transcript sequences of the same gene can differ through naturally occurring variations (e.g. polymorphisms), each with its own valid existence. This clone is substantially in agreement with the reference, but a complete review of all prevailing variants is recommended prior to use. [More info](#)

OTI Annotation: This clone was engineered to express the complete ORF with an expression tag. Expression varies depending on the nature of the gene.

Components: The ORF clone is ion-exchange column purified and shipped in a 2D barcoded Matrix tube containing 10ug of transfection-ready, dried plasmid DNA (reconstitute with 100 ul of water).

Reconstitution Method:

1. Centrifuge at 5,000xg for 5min.
2. Carefully open the tube and add 100ul of sterile water to dissolve the DNA.
3. Close the tube and incubate for 10 minutes at room temperature.
4. Briefly vortex the tube and then do a quick spin (less than 5000xg) to concentrate the liquid at the bottom.
5. Store the suspended plasmid at -20°C. The DNA is stable for at least one year from date of shipping when stored at -20°C.

RefSeq: [NM_001201428.2](#)

RefSeq Size: 2436 bp

RefSeq ORF: 1155 bp

Locus ID: 26003

UniProt ID: [Q9H8Y8](#)

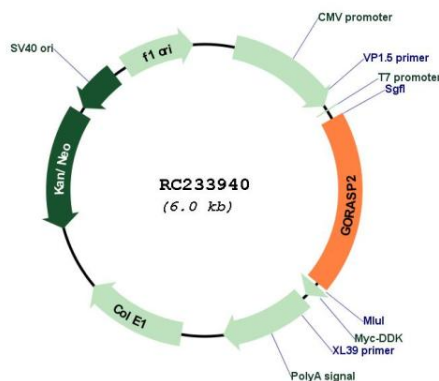
Cytogenetics: 2q31.1

Protein Families: Druggable Genome

MW: 40.2 kDa

Gene Summary: This gene encodes a member of the Golgi reassembly stacking protein family. These proteins may play a role in the stacking of Golgi cisternae and Golgi ribbon formation, as well as Golgi fragmentation during apoptosis or mitosis. The encoded protein also plays a role in the intracellular transport of transforming growth factor alpha and may function as a molecular chaperone. A pseudogene of this gene is located on the short arm of chromosome 2. Alternatively spliced transcript variants encoding multiple isoforms have been observed for this gene. [provided by RefSeq, Jan 2011]

Product images:



Circular map for RC233940