

Product datasheet for RC233935

LAYN (NM_001258390) Human Tagged ORF Clone

Product data:

Product Type:	Expression Plasmids
Product Name:	LAYN (NM_001258390) Human Tagged ORF Clone
Tag:	Myc-DDK
Symbol:	LAYN
Mammalian Cell Selection:	Neomycin
Vector:	pCMV6-Entry (PS100001)
E. coli Selection:	Kanamycin (25 ug/mL)
ORF Nucleotide Sequence:	>RC233935 representing NM_001258390. Blue=ORF Red=Cloning site Green=Tag(s)

```
GCTCGTTTAGTGAACCGTCAGAATTTTGTAAACGACTCACTATAGGGCGGCCGGGAATTCGTCGACTG
GATCCGGTACCGAGGAGATCTGCCGCCGCGATCGCC
ATGAGGCCGGAAACCGCCTACAGGCCGTGCTGCTGGCCGTGCTGCTGGTGGGGCTGCGGGCCGCGACG
GGTCGCTGCTGAGTGCCTCGGATTTGGACCTCAGAGGAGGGCAGCCAGTCTGCCGGGGAGGGACACAG
AGGCCTTGTATAAAGTCATTTACTTCCATGATACTTCTCGAAGACTGAACTTTGAGGAAGCCAAAGAA
GCCTGCAGGAGGGATGGAGGCCAGCTAGTCAGCATCGAGTCTGAAGATGAACAGAACTGATAGAAAAG
TTCATTGAAAACCTCTTGCCATCTGATGGTGACTTCTGGATTGGGCTCAGGAGCGTGAGGAGAAACAA
AGCAATAGCACAGCCTGCCAGGACCTTTATGCTTGGACTGATGGCAGCATATCACAATTTAGGAAGTGG
TATGTGGATGAGCCATCCTGCCGAGCGAGGTCTGCGTGGTTCATGTACCATCAGCCATCGGCACCCGCT
GGCATCGGAGGCCCTACATGTTCCAGTGAATGATGACCGGTGCAACATGAAGAACAATTTTCAATTTGC
AAATATTCTGATGAGAAACCAGCAGTTCCTTCTAGAGAAGCTGAAGGTGAGGAAACAGAGCTGACAACA
CCTGTACTTCCAGAAGAAACACAGGAAGAAGATGCCAAAAAACATTTAAAGAAAGTAGAGAAGCTGCC
TTGAATCTGGCCTACATCCTAATCCCCAGCATTCCCCTTCTCCTCCTCTTGTGGTACCACAGTTGTA
TGTTGGGTTTGGATCTGTAGAAAAGAAAACGGGAGCAGCCAGACCCTAGCACAAAGAAGCAACACACC
ATCTGGCCCTCTCCTACCAGGAAACAGCCCGGACCTAGAGGTCTACAATGTATAAGAAAACAAAGC
GAAGCTGACTTAGCTGAGACCCGCCAGACCTGAAGAATATTTTATTCCGAGTGTGTTCCGGGAGAAGCC
ACTCCCGATGACATGTCTTGTGACTATGACAACATGGCTGTGAACCCATCAGAAAGTGGGTTTGTGACT
CTGGTGAGCGTGAGAGTGGATTTGTGACCAATGACATTTATGAGTTCTCCCAGACCAAATGGGGAGG
AGTAAGGAGTCTGGATGGGTGGAATGAAATATATGGTTAT
ACGCGTACGCGGCCGCTCGAGCAGAAACTCATCTCAGAAGAGGATCTGGCAGCAAATGATATCCTGGAT
TACAAGGATGACGACGATAAGGTTTAAACGGCCGGC
```



[View online »](#)

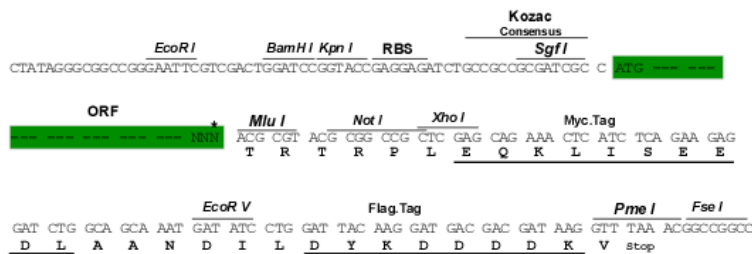
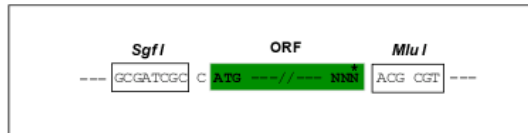
Protein Sequence: >Peptide sequence encoded by RC233935
 Blue=ORF Red=Cloning site Green=Tag(s)

MRPGTALQAVLLAVLLVGLRAATGRLLSASDLRLGGQPVCRGGTQRPCYKVIYFHDTSRRLNFEEAKE
 ACRRDGGQLVSI ESEDEQKLI EKFIENLLPSDGFWIGLRREEKQSNSTACQDL YAWTDGSI SQFRNW
 YVDEPSCGSEVCVVMYHQPSAPAGIGP YMFQWNDDRCNMKNNFICKYSDEKPAVPSREAEGETELTT
 PVLPEETQEEDAKKTFKESREAALNLAYILIPSIPLLLLLLVTTVVVCWVICRKRKREQDPSTKKQHT
 IWPSPHQGNPDLEVYNVIRKQSEADLAETRPDLKNISFRVCSGEATPDDMSCDYDNMAVNPSESGFVT
 LVSVESGFVTNDIYEFSPDQMGRSKESGWVENEIYGY
 TRTRPLEQKLISEEDLAANDILDYKDDDDKV

Restriction Sites: SgfI-MluI

Cloning Scheme:

Cloning sites used for ORF Shuttling:



* The last codon before the Stop codon of the ORF

ACCN: NM_001258390

ORF Size: 1146 bp

OTI Disclaimer: The molecular sequence of this clone aligns with the gene accession number as a point of reference only. However, individual transcript sequences of the same gene can differ through naturally occurring variations (e.g. polymorphisms), each with its own valid existence. This clone is substantially in agreement with the reference, but a complete review of all prevailing variants is recommended prior to use. [More info](#)

OTI Annotation: This clone was engineered to express the complete ORF with an expression tag. Expression varies depending on the nature of the gene.

Components: The ORF clone is ion-exchange column purified and shipped in a 2D barcoded Matrix tube containing 10ug of transfection-ready, dried plasmid DNA (reconstitute with 100 ul of water).

Reconstitution Method:

1. Centrifuge at 5,000xg for 5min.
2. Carefully open the tube and add 100ul of sterile water to dissolve the DNA.
3. Close the tube and incubate for 10 minutes at room temperature.
4. Briefly vortex the tube and then do a quick spin (less than 5000xg) to concentrate the liquid at the bottom.
5. Store the suspended plasmid at -20°C. The DNA is stable for at least one year from date of shipping when stored at -20°C.

RefSeq: [NM_001258390.2](#)

RefSeq Size: 2772 bp

RefSeq ORF: 1149 bp

Locus ID: 143903

UniProt ID: [Q6UX15](#)

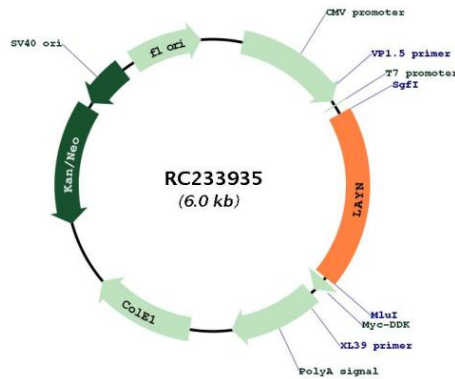
Cytogenetics: 11q23.1

Protein Families: Transmembrane

MW: 43.1 kDa

Gene Summary: Receptor for hyaluronate.[UniProtKB/Swiss-Prot Function]

Product images:



Circular map for RC233935