

## Product datasheet for RC233863

### ASCC1 (NM\_001198798) Human Tagged ORF Clone

#### Product data:

Product Type:	Expression Plasmids
Product Name:	ASCC1 (NM_001198798) Human Tagged ORF Clone
Tag:	Myc-DDK
Symbol:	ASCC1
Synonyms:	ASC1p50; CGI-18; p50; SMABF2
Mammalian Cell Selection:	Neomycin
Vector:	pCMV6-Entry (PS100001)
E. coli Selection:	Kanamycin (25 ug/mL)
ORF Nucleotide Sequence:	>RC233863 ORF sequence Red=Cloning site Blue=ORF Green=Tags(s)

TTTTGTAATACGACTCACTATAGGGCGGCCGGAATTCGTCGACTGGATCCGGTACCGAGGAGATCTGCC  
GCC**CGATCGCC**

ATGGAAGTTCTGCGTCCACAGCTTATAAGAATTGATGGCCGGAATTACAGGAAGAATCCAGTCCAAGAAC  
AGACCTATCAACATGAAGAAGATGAAGAGGACTTCTATCAAGGCTCCATGGAGTGTGCTGATGAGCCCTG  
TGATGCCTACGAGGTGGAGCAGACCCACAAGGATTCGGTCTACTTTGAGGGCCCCAGCTTGCTCTAT  
AAGCATATAGTTGGAAAGAGAGGGGACACTAGGAAGAAAATAGAAATGGAGACAAAACCTCTATTAGCA  
TTCCTAAACCTGGACAAGACGGGAAATGTAATCACTGGCCAGCATCGAAATGGTGTAAATTCAGCCCG  
AACACGGATTGATGTTCTTTGGACACTTTTCGAAGAAAGCAGCCCTTCACTCACTTCCTTGCTTTTTTC  
CTCAATGAAGTTGAGGTTGAGGAAGGATTCCTGAGATTCCAGGAGGAAGTACTGGCGAAGTGCTCCATGG  
ATCATGGGGTTGACAGCAGCATTTCAGAAATCCTAAAAAGCTTCATCTAACTATTGGGATGTTGGTGCT  
TTTGAGTGAGGAAGAGATCCAGCAGACATGTGAGATGCTACAGCAGTGTAAAGAGGAATTCATTAATGAT  
ATTTCTGGGGTAAACCCCTAGAAGTGGAGATGGCAGGGATAGAATACATGAATGATGATCCTGGCATGG  
TGGATGTTCTTTACGCCAAAGTCCATATGAAAGATGGCTCCAACAGGCTACAAGAATTAGTTGATCGAGT  
GCTGGAACGTTTTAGGCATCTGGACTAATAGTAAAGAGTGAATAGTGTGAACTGCATGCTACAGTT  
ATGAATACACTATTCAGGAAAGACCCCAATGCTGAAGGCAGGTACAATCTCACACAGCGGAAGGCAAAT  
ATATCTTCAAGGAAAGAGAATCATTGATGGCCGAAATATTTAAAGTTGTTGAGAACTTCTACTTTGG  
CTCCCTAAAGCTGAATCAATTCACATCTCTCAGAGGTTACCCTAGACAGCTTTGGAACTACGCTTCC  
TGTGGACAAATTGACTTCTCC

**ACGCGT**ACGCGGCCGCTCGAGCAGAACTCATCTCAGAAGAGGATCTGGCAGCAAATGATATCCTGGATT  
ACAAGGATGACGACGATAAGGTTTAA



[View online »](#)

**Protein Sequence:** >RC233863 protein sequence  
Red=Cloning site Green=Tags(s)

MEVLRPQLIRIDGRNYRKNPVQEQTQHEEDEEDFYQGSMECADEPCDAYEVEQTPQGFRSTLRAPSLLY  
 KHIVGKRGDTRKKIEMETKTSISIPKPGQDGEIVITGQHRNGVISARTRIDVLLDTFRKQPFTHFLAFF  
 LNEVEVQEGFLRFQEEVLAKCSMDHGVDSISIFQNPKKLHLTIGMLVLLSEEEIQQTCEMLQQCKEEFIND  
 ISGGKPLEVEMAGIEYMNDDPGMVDVL YAKVHMKDGSNRLQELVDRVLERFQASGLIVKEWNSVKLHATV  
 MNTLFRKDPNAEGRYNLYTAEGKYIFKERESFDGRNLIKLFENFYFGLKLNLSIHSQRFTVDSFGNYAS  
 CGQIDFS

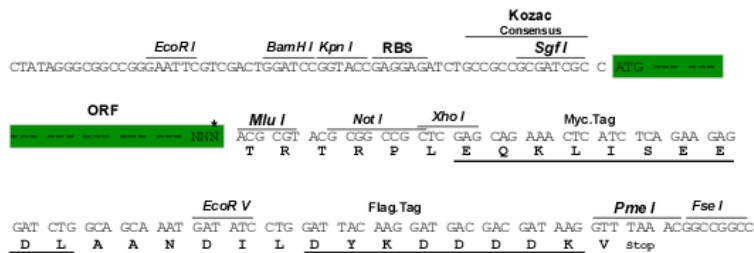
TRTRPLEQKLISEEDLAANDILDYKDDDDKV

**Chromatograms:** [https://cdn.origene.com/chromatograms/mk6304\\_b07.zip](https://cdn.origene.com/chromatograms/mk6304_b07.zip)

**Restriction Sites:** SgfI-MluI

**Cloning Scheme:**

Cloning sites used for ORF Shuttling:



\* The last codon before the Stop codon of the ORF

**ACCN:** NM\_001198798

**ORF Size:** 1071 bp

**OTI Disclaimer:** The molecular sequence of this clone aligns with the gene accession number as a point of reference only. However, individual transcript sequences of the same gene can differ through naturally occurring variations (e.g. polymorphisms), each with its own valid existence. This clone is substantially in agreement with the reference, but a complete review of all prevailing variants is recommended prior to use. [More info](#)

**OTI Annotation:** This clone was engineered to express the complete ORF with an expression tag. Expression varies depending on the nature of the gene.

**Components:** The ORF clone is ion-exchange column purified and shipped in a 2D barcoded Matrix tube containing 10ug of transfection-ready, dried plasmid DNA (reconstitute with 100 ul of water).

**Reconstitution Method:**

1. Centrifuge at 5,000xg for 5min.
2. Carefully open the tube and add 100ul of sterile water to dissolve the DNA.
3. Close the tube and incubate for 10 minutes at room temperature.
4. Briefly vortex the tube and then do a quick spin (less than 5000xg) to concentrate the liquid at the bottom.
5. Store the suspended plasmid at -20°C. The DNA is stable for at least one year from date of shipping when stored at -20°C.

**RefSeq:** [NM\\_001198798.2](#), [NP\\_001185727.1](#)

**RefSeq Size:** 2683 bp

**RefSeq ORF:** 1074 bp

**Locus ID:** 51008

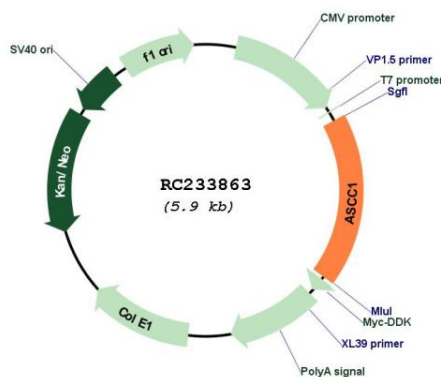
**UniProt ID:** [Q8N9N2](#)

**Cytogenetics:** 10q22.1

**MW:** 41.2 kDa

**Gene Summary:** This gene encodes a subunit of the activating signal cointegrator 1 (ASC-1) complex. The ASC-1 complex is a transcriptional coactivator that plays an important role in gene transactivation by multiple transcription factors including activating protein 1 (AP-1), nuclear factor kappa-B (NF-kB) and serum response factor (SRF). The encoded protein contains an N-terminal KH-type RNA-binding motif which is required for AP-1 transactivation by the ASC-1 complex. Mutations in this gene are associated with Barrett esophagus and esophageal adenocarcinoma. Alternatively spliced transcripts encoding multiple isoforms have been observed for this gene. [provided by RefSeq, Dec 2011]

## Product images:



Circular map for RC233863