

## Product datasheet for **RC233862**

### **RAB3IL1 (NM\_001271686) Human Tagged ORF Clone**

#### Product data:

Product Type:	Expression Plasmids
Product Name:	RAB3IL1 (NM_001271686) Human Tagged ORF Clone
Tag:	Myc-DDK
Symbol:	RAB3IL1
Synonyms:	GRAB
Mammalian Cell Selection:	Neomycin
Vector:	pCMV6-Entry (PS100001)
E. coli Selection:	Kanamycin (25 ug/mL)
ORF Nucleotide Sequence:	>RC233862 representing NM_001271686 Red=Cloning site Blue=ORF Green=Tags(s)

TTTTGTAATACGACTCACTATAGGGCGGCCGGAATTCGTCGACTGGATCCGGTACCGAGGAGATCTGCC  
GCC**CGATCGCC**

ATGGACTCTTCTGAGGAGCACGCTGGGTGCCCCGCCGAGGGACATGTCCCGTGTCTGGCCATGAGTG  
CAGGGACTGTCCGCTACGCCCATCAGGCCTGTGCCCTGACTTGAGGGAACTTGAGAGAAGAGCCCTG  
GGGCACAGACAGCCACCCAGCCAGACCAGGGCCTCCCGCCGCCCTTGACGCTGTCCCGTCCCTGG  
AAGAGCACGGACCCTGCCAAGGCCACAGGGAGTCCCGAGGACCCTGGTGGAGACCTCTGCAGGGGAGG  
AGGCCAAGGCCAGGAGGGCCCCGAGCCGCCAGCTGGACGTGTGCGCCTGCGCAGCTCTCCATGGA  
GATCCGAGAGAAGGGCTCCGAGTTCCTGAAGGAGGAGCTGCACAGAGCGCAGAAGGAGCTGAAGCTAAAG  
GACGAGGAATGTGAGCGGCTGTCCAAGGTGCGGGAGCAGCTAGAACAGGAGCTGGAAGAGCTGACGGCCA  
GCCTGTTTGAGGAAGCTCACAAGATGGTTGCGAAGCCAACATGAAGCAGGCGGCATCAGAAAAGCAGCT  
GAAGGAGGCTCGGGGCAAGGTGGACACAATCCTGTTTGCAGAGTTCAGGCCTGGAGGGAATCCCCACC  
CTGGACAAGACCTGCCCTTCTGGAAAGGGTGTACCGAGAGGACGTGGGCCCTGCCTGGACTTCAAA  
TGCAGGAGCTCTCGGTGCTGGTACGGGCCCGCTGGAGGACAACACGCTACCATGAGCCGGTGGCTTC  
GCAGACGCTGCCACAGTGAAGGTGGCCGAGGTTGACTGTAGCAGCACCAACACATGTGCCCTGAGCGGG  
CTGACCCGACCTGCCGCCACCGAATCCGGCTCGGGGACTCCAAAAGCCATTACTACATCTCGCCATCTT  
CCCGGGCCAGGATCACCGCAGTGTGCAACTTCTTACCTACATCCGCTACATCCAGCAAGGCCTGGTGCG  
GCAGGACGCAGAGCCCATGTTCTGGGAGATCATGAGGTTGCGGAAGGAGATGTCACTGGCCAAGCTCGGC  
TTCTTCCCCAGGAGGCT

**ACGCGT**ACGCGGCCGCTCGAGCAGAACTCATCTCAGAAGAGGATCTGGCAGCAATGATATCCTGGATT  
ACAAGGATGACGACGATAAGGTTAA



[View online »](#)

**Protein Sequence:** >RC233862 representing NM\_001271686  
 Red=Cloning site Green=Tags(s)

MDSSEEHAGCPARGTCPVFLAMSAGTVRYAPSGLCPVLEGNLREEPWGTDSPQPQDGLPPPLA AVVPVW  
 KSTDPCQGHRES PGALVETSAGEEAQQQEGPAAQLDVLRLRSSSMEIREKGFLEKEELHRAQKELKLLK  
 DEECERLSKVREQLQELEELTASLFEEAHKMVREANMKQAAASEKQLKEARGKVDITLFAEFQAWRESPT  
 LDKTCPFLE RYREDVGPCLDFTMQELSVLVRAAVEDNTLTIEPVASQTLPTVKVAEVDCSSTNTCALSG  
 LTRTCRHRIRLGD SKSHYYIS PSSRARITAVCNFFTYIRYIQQLV RQDAEPMFWEIMRLRKEMSLAKLGF  
 FFPQEA

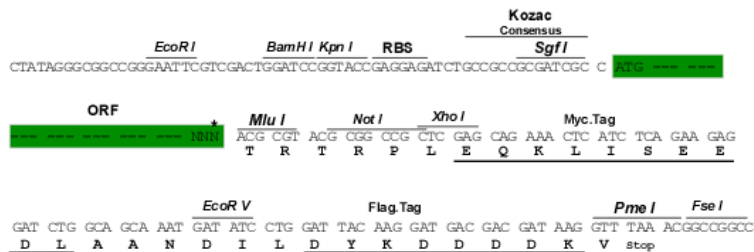
TRTRPLEQKLISEEDLAANDILDYKDDDDKV

**Restriction Sites:**

Sgfl-MluI

**Cloning Scheme:**

Cloning sites used for ORF Shuttling:



\* The last codon before the Stop codon of the ORF

**ACCN:** NM\_001271686

**ORF Size:** 1068 bp

**OTI Disclaimer:** The molecular sequence of this clone aligns with the gene accession number as a point of reference only. However, individual transcript sequences of the same gene can differ through naturally occurring variations (e.g. polymorphisms), each with its own valid existence. This clone is substantially in agreement with the reference, but a complete review of all prevailing variants is recommended prior to use. [More info](#)

**OTI Annotation:** This clone was engineered to express the complete ORF with an expression tag. Expression varies depending on the nature of the gene.

**Components:** The ORF clone is ion-exchange column purified and shipped in a 2D barcoded Matrix tube containing 10ug of transfection-ready, dried plasmid DNA (reconstitute with 100 ul of water).

**Reconstitution Method:**

1. Centrifuge at 5,000xg for 5min.
2. Carefully open the tube and add 100ul of sterile water to dissolve the DNA.
3. Close the tube and incubate for 10 minutes at room temperature.
4. Briefly vortex the tube and then do a quick spin (less than 5000xg) to concentrate the liquid at the bottom.
5. Store the suspended plasmid at -20°C. The DNA is stable for at least one year from date of shipping when stored at -20°C.

**RefSeq:** [NM\\_001271686.2](#)

**RefSeq Size:** 2149 bp

**RefSeq ORF:** 1071 bp

**Locus ID:** 5866

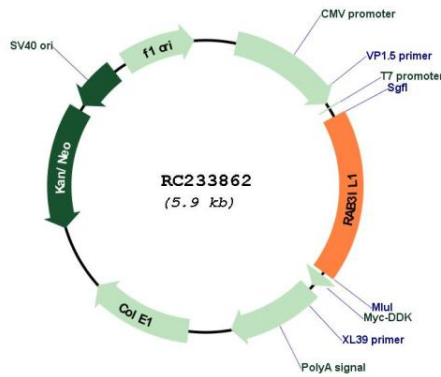
**UniProt ID:** [Q8TBN0](#)

**Cytogenetics:** 11q12.2-q12.3

**MW:** 40.2 kDa

**Gene Summary:** This gene encodes a guanine nucleotide exchange factor for the ras-related protein Rab3A. The encoded protein binds Rab3a and the inositol hexakisphosphate kinase InsP6K1. Alternative splicing results in multiple transcript variants. A related pseudogene has been identified on chromosome 7. [provided by RefSeq, Nov 2012]

**Product images:**



Circular map for RC233862