

Product datasheet for **RC233851**

OTX1 (NM_001199770) Human Tagged ORF Clone

Product data:

Product Type: Expression Plasmids
 Product Name: OTX1 (NM_001199770) Human Tagged ORF Clone
 Tag: Myc-DDK
 Symbol: OTX1
 Mammalian Cell Selection: Neomycin
 Vector: pCMV6-Entry (PS100001)
 E. coli Selection: Kanamycin (25 ug/mL)
 ORF Nucleotide Sequence: >RC233851 representing NM_001199770
 Red=Cloning site Blue=ORF Green=Tags(s)

TTTTGTAATACGACTCACTATAGGGCGGCCGGAATTCGTCGACTGGATCCGGTACCGAGGAGATCTGCC
 GCC**CGATCGCC**

ATGATGTCTTACCTCAAACAACCCCATACGGCATGAACGGGCTGGGCCTGGCCGGGCCCGCCATGGACC
 TCCTGCACCCATCCGTGGGCTATCCGGCCACTCCGCGGAAGCAGCGGGGAGCGCACCACTTCACGCG
 TTCACAGCTGGACGTGCTCGAGGCGCTCTCGCCAAGACTCGCTACCTGACATCTTCATGCGGGAGGAG
 GTGGCGCTCAAGATCAACCTGCCGGAGTCTAGAGTCCAGGTCTGGTTCAAGAACCGCCGCCAAATGCC
 GCCAGCAGCAGCAGAGCGGGAGCGGAACCAAGAGCCGCCAGCCAAGAAGAAGTCTCTCCAGTGGGGA
 GAGCTCGGGCTCCGAAAGCAGTGGCCAATTCACGCCGCCAGCTGTGTCCAGCTCTGCCTCGTCTCTAGC
 TCGGCGTCCAGCTCTCCGCCAACCCAGCGGCTGCAGCGGCTGCGGGACTAGGTGGGAACCCGGTGGCGG
 CCGCGTGTGCTGAGTACACCGCTGCCTCATCTATCTGGAGCCCGGCCTCCATCTCGCCAGGCTCAGC
 GCCCGGTCCGTGTGCGTGCCGGAGCCATTGGCCGCGCCTAGCAACACCTCGTGTATGCAGCGCTCCGTA
 GCTGCAGGCGCCGCCACCCGAGCAGCCTTTATCCCATGTCTACGGCCAGGGCGGCAGCTACGGCCAAG
 GCTACCCTACGCCCTCTCTTCTACTTTGGCGGCGTGGACTGCAGCTCATACTAGCGCCCATGCACTC
 ACATCACCACCCGACCGCTGAGCCCCATGGCACCTCTCCATGGCGGGCCACCATCATCACCACCCA
 CATGCGCACCCCGTTGAGCCAGTCTCAGGCCACCACCACCACCATCACCACCACCACCAAGGCT
 ACGGTGGCTCTGGGCTTGCCTTCAACTCTGCCGACTGCTTGATTACAAGGAGCCTGGCGCGCTGCTGC
 TTCTCCGCTGGAACTCAACTCAACTCCCCGACTGTCTGGACTATAAGGACCAAGCCTCATGGCGG
 TTCCAGGTCTTG

AG**CGGACCG**ACGCGTACGCGGCCGCTCGAGCAGAACTCATCTCAGAAGAGGATCTGGCAGCAAATGATATCC
 TGGATTACAAGGATGACGACGATAAGGTTAA



[View online »](#)

Protein Sequence: >RC233851 representing NM_001199770
 Red=Cloning site Green=Tags(s)

MMSYLKQPPYGMNGLGLAGPAMDLLHPSVGYPATPRKQRRERTTFTRSQLDVLEALFAKTRYPDIFMREE
 VALKINLPESRVQVWFKNRRAKCRQQQSGSGTKSRPAKKKSSPVRESSGESSGQFTPPAVSSSSASSSS
 SASSSSANPAAAAAGLGGNPVAAASSLSTPAASSIWPASISPGSAPASVSVPEPLAAPSNTSCMQRSV
 AAGAATAAASYPMSYGGQGSYGGYPTPSSSYFGGVDCSSYLAPMHSHHHPHQLSPMAPSSMAGHHHHHP
 HAHHP LSQSSGHHHHHHHHHQGYGGSGLAFNSADCLDYKEPGAAAASSAWKLNFNPSDCLDYKDQASWR
 FQVL

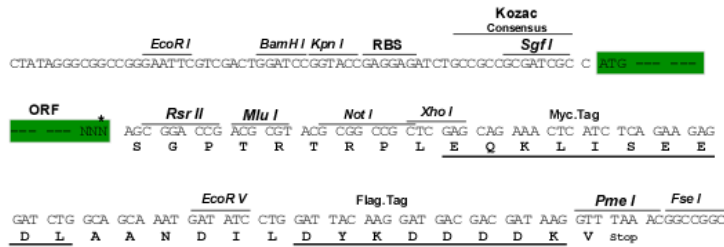
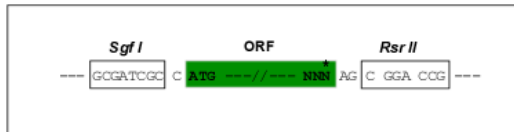
SGP TRTRPLEQKLI SEEDLAANDILDYKDDDDKV

Chromatograms: https://cdn.origene.com/chromatograms/mk6190_c04.zip

Restriction Sites: SgfI-RsrII

Cloning Scheme:

Cloning sites used for ORF Shuttling:



* The last codon before the Stop codon of the ORF

ACCN: NM_001199770

ORF Size: 1062 bp

OTI Disclaimer: The molecular sequence of this clone aligns with the gene accession number as a point of reference only. However, individual transcript sequences of the same gene can differ through naturally occurring variations (e.g. polymorphisms), each with its own valid existence. This clone is substantially in agreement with the reference, but a complete review of all prevailing variants is recommended prior to use. [More info](#)

OTI Annotation: This clone was engineered to express the complete ORF with an expression tag. Expression varies depending on the nature of the gene.

Components: The ORF clone is ion-exchange column purified and shipped in a 2D barcoded Matrix tube containing 10ug of transfection-ready, dried plasmid DNA (reconstitute with 100 ul of water).

Reconstitution Method:

1. Centrifuge at 5,000xg for 5min.
2. Carefully open the tube and add 100ul of sterile water to dissolve the DNA.
3. Close the tube and incubate for 10 minutes at room temperature.
4. Briefly vortex the tube and then do a quick spin (less than 5000xg) to concentrate the liquid at the bottom.
5. Store the suspended plasmid at -20°C. The DNA is stable for at least one year from date of shipping when stored at -20°C.

RefSeq: [NM_001199770.1](#), [NP_001186699.1](#)

RefSeq Size: 2872 bp

RefSeq ORF: 1065 bp

Locus ID: 5013

UniProt ID: [P32242](#)

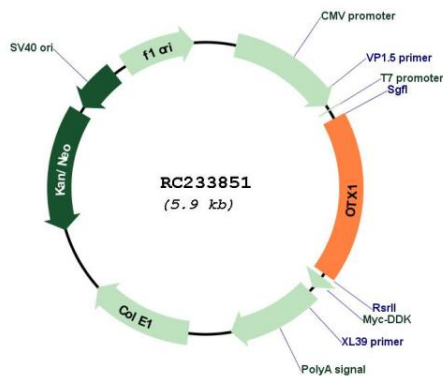
Cytogenetics: 2p15

Protein Families: Druggable Genome, Transcription Factors

MW: 37.3 kDa

Gene Summary: This gene encodes a member of the bicoid sub-family of homeodomain-containing transcription factors. The encoded protein acts as a transcription factor and may play a role in brain and sensory organ development. A similar protein in mouse is required for proper brain and sensory organ development and can cause epilepsy. Alternative splicing results in multiple transcript variants. [provided by RefSeq, Jan 2015]

Product images:



Circular map for RC233851