

## Product datasheet for RC233814

### SSBP2 (NM\_001256734) Human Tagged ORF Clone

#### Product data:

Product Type: Expression Plasmids  
 Product Name: SSBP2 (NM\_001256734) Human Tagged ORF Clone  
 Tag: Myc-DDK  
 Symbol: SSBP2  
 Synonyms: HSPC116; SOSS-B2  
 Mammalian Cell Selection: Neomycin  
 Vector: pCMV6-Entry (PS100001)  
 E. coli Selection: Kanamycin (25 ug/mL)  
 ORF Nucleotide Sequence: >RC233814 representing NM\_001256734  
 Red=Cloning site Blue=ORF Green=Tags(s)

TTTTGTAATACGACTCACTATAGGGCGGCCGGAATTCGTCGACTGGATCCGGTACCGAGGAGATCTGCC  
 GCC**CGGATCGCC**

ATGTACGGCAAAGGCAAGAGTAACAGCAGCGCCGTCCTCCGACAGCCAGGCCCGGGAGAAGTTAGCAC  
 TCTACGTATATGAATATCTGCTCCATGTAGGAGCTCAGAAATCAGCTCAAACATTTTTATCAGAGATAAG  
 ATGGGAAAAAACATCACATTGGGGGAACCACCAGGATCTTACATTCTGGTGGTGTGATTTTGGGAT  
 CTCTACTGTGCAGCTCCAGAGAGACGTGAAACATGTGAACACTCAAGTGAAGCAAAGCCTTCCATGATT  
 ACCCTTTTATGTCACCTCGGTACCCTGGAGGTCCAAGGCCCCATTGAGGATACCTAATCAGGCACTTGG  
 AGGTGTCCAGGAAGTCAGCCATTACTCCCCAGTGAATGGATCCAACCTCGACAACAAGGACATCCAAT  
 ATGGGTGGGCAATGCAGAGAATGACTCCTCAAGAGGAATGGTCCCTTAGGACCACAGTCTGACCCTT  
 GGTTATCATTACAGAACTATGGAGGTGCAATGAGACCCCACTGAATGCTTTAGGTGGCCCTGGAATGCC  
 TGGAAATGAACATGGGTCCAGGTGGTGGTAGACCTTGCCAAACCAACAATGCCAATCAATACCATAC  
 TCCTCAGCATCTCCTGGGAATATGTAGGTCTCCAGGAGGTGGAGGGCCACCAGGAACCCCATCATGC  
 CTAGTCCAGCAGATTCAACCACTCTGGTGATAACATGTATACTTTAATGAATGCAGTACCTCCTGGACC  
 TAACAGACCTAATTTCCAATGGTCTGGGTCCAGGATATGGACAGTATTTCCAAGAATTTCTCCAATAATGA  
 CATCACATGAATGGTCTTTAGGCTCAGGAGATATGGACAGTATTTCCAAGAATTTCTCCAATAATGA  
 GCCTGAGTAATCAACCGGCACTCCAAGGATGATGGCGAAATGGGGGAAATTTCTTAAATCCTTTTCA  
 GAGTGAGAGTTACTCCCCTAGCATGACAATGAGCGTG

**ACGCGT**ACGCGGCCGCTCGAGCAGAACTCATCTCAGAAGAGGATCTGGCAGCAATGATATCCTGGATT  
 ACAAGGATGACGACGATAAGGTTTAA



[View online »](#)

**Protein Sequence:** >RC233814 representing NM\_001256734  
Red=Cloning site Green=Tags(s)

MYGK GKSNSSAVPSDSQAREKLALYVVEYLLHVGAQKSAQTFLSEIRWEKNITLGEPPGFLHSSWCVFWD  
 LYCAAPERRETCEHSSEAKAFHDYPFMSPRYPGGPRPPLRIPNQALGGVPGSQLLPSGMDPTRQQGHPN  
 MGGPMQRMTPPRGMVPLGPQSDPWL SLQNYGGAMRPLNALGGPGMPGMNMGPGGGRPWPNPTNANSIPY  
 SSASPGNYVGGPPGGGGPPGTPIIMPSPADSTNSGDNMYTLMNAVPPGPNRPNFPMGPGSDGPMGGLGMES  
 HHMNGSLGSGDMDSISKNSPNNMLSLNPQGTPRDDGEMGNFLNPFQSESYSPSMTMSV

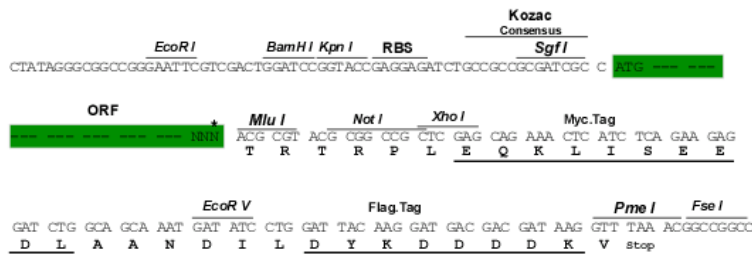
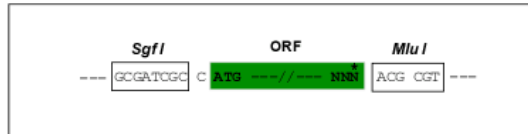
TRTRPLEQKLISEEDLAANDILDYKDDDDKV

**Restriction Sites:**

SgfI-MluI

**Cloning Scheme:**

Cloning sites used for ORF Shuttling:



\* The last codon before the Stop codon of the ORF

**ACCN:** NM\_001256734

**ORF Size:** 1017 bp

**OTI Disclaimer:** The molecular sequence of this clone aligns with the gene accession number as a point of reference only. However, individual transcript sequences of the same gene can differ through naturally occurring variations (e.g. polymorphisms), each with its own valid existence. This clone is substantially in agreement with the reference, but a complete review of all prevailing variants is recommended prior to use. [More info](#)

**OTI Annotation:** This clone was engineered to express the complete ORF with an expression tag. Expression varies depending on the nature of the gene.

**Components:** The ORF clone is ion-exchange column purified and shipped in a 2D barcoded Matrix tube containing 10ug of transfection-ready, dried plasmid DNA (reconstitute with 100 ul of water).

**Reconstitution Method:**

1. Centrifuge at 5,000xg for 5min.
2. Carefully open the tube and add 100ul of sterile water to dissolve the DNA.
3. Close the tube and incubate for 10 minutes at room temperature.
4. Briefly vortex the tube and then do a quick spin (less than 5000xg) to concentrate the liquid at the bottom.
5. Store the suspended plasmid at -20°C. The DNA is stable for at least one year from date of shipping when stored at -20°C.

**RefSeq:** [NM\\_001256734.2](#)

**RefSeq Size:** 4375 bp

**RefSeq ORF:** 1020 bp

**Locus ID:** 23635

**UniProt ID:** [P81877](#)

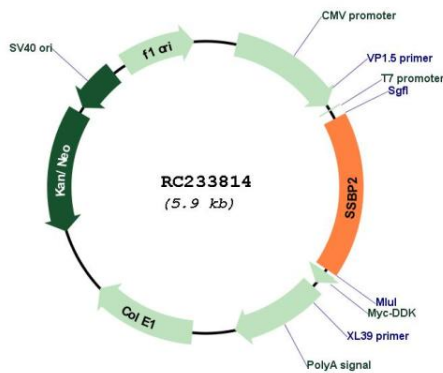
**Cytogenetics:** 5q14.1

**Protein Families:** Transcription Factors

**MW:** 36.4 kDa

**Gene Summary:** This gene encodes a subunit of a protein complex that interacts with single-stranded DNA and is involved in the DNA damage response and maintenance of genome stability. The encoded protein may also play a role in telomere repair. A variant of this gene may be associated with survival in human glioblastoma patients. [provided by RefSeq, Sep 2016]

## Product images:



Circular map for RC233814