

Product datasheet for **RC233804**

WWP2 (NM_001270455) Human Tagged ORF Clone

Product data:

Product Type: Expression Plasmids
Product Name: WWP2 (NM_001270455) Human Tagged ORF Clone
Tag: Myc-DDK
Symbol: WWP2
Synonyms: AIP2; WWp2-like
Mammalian Cell Selection: Neomycin
Vector: pCMV6-Entry (PS100001)
E. coli Selection: Kanamycin (25 ug/mL)
ORF Nucleotide Sequence: >RC233804 representing NM_001270455
Red=Cloning site Blue=ORF Green=Tags(s)

TTTTGTAATACGACTCACTATAGGGCGGCCGGAATTCGTCGACTGGATCCGGTACCGAGGAGATCTGCC
GCC**CGCATCGCC**

ATGGCATCTGCCAGCTCTAGCCGGGCAGGAGTGGCCCTGCCTTTTGAGAAGTCTCAGCTCACTTTGAAAG
TGGTGTCCGCAAAGCCCAAGGTGCATAATCGTCAACCTCGAATTAACCTCTACGTGGAGGTGGCGGTGGA
TGGACTCCCCAGTGAGACCAAGAAGACTGGGAAGCGCATTGGGAGCTCTGAGCTTCTCTGGAATGAGATC
ATCATTTTGAATGTCACGGCACAGAGTCATTTAGATTTAAAGGTCTGGAGCTGCCATACCTTGAGAAATG
AACTGCTAGGCACCGCATCTGTCAACCTCTCCAACGTCTTGAAGAACAATGGGGGCAAAATGGAGAACAT
GCAGCTGACCCTGAACCTGCAGACGGAGAACAAGGCAGCGTTGTCTCAGCGGAGAGCTGACAATTTTC
CTGGACGGGCCAACTGTTGATCTGGGAAATGTGCCTAATGGCAGTGCCCTGACAGATGGATCACAGCTGC
CTTCGAGAGACTCCAGTGAACAGCAGTAGCTCCAGAGAACCAGCCAGCCCCCAGCACAAAAGTCTT
TGGTGAAGATCCCGGACGCACAGACATTCGGGTGCTTCAGCCAGAACAACCCAGCAACCCGGCGAGCAA
AGCCCCGGTGCTCGGAGCCGGCACCGCCAGCCCGTCAAGAACTCAGGCCACAGTGGCTTGGCCAATGGCA
CAGTGAATGATGAACCCACAACAGCCACTGATCCCGAAGAACCTCCGTTGTTGGTGTGACGTCCCCACC
TGCTGCACCCTTGAGTGTGACCCCGAATCCCAACAGACTTCTCTCCCTGCCAGCCACACCCGGCTGAA
GGAGAGGAACCCAGCACTTCGGGTACACAGCAGCTCCAGCGGCTGCCAGGCCCCGACGCTCTGCCTG
CTGGATGGGAACAGCGAGAGCTGCCCAACGGACGTGTCTATTATGTTGACCACAATACCAAGACCACCAC
CTGGGAGCGGCCCTTCTCCAGGG

ACGCGTACGCGGCCGCTCGAGCAGAAACTCATCTCAGAAGAGGATCTGGCAGCAAATGATATCCTGGATT
ACAAGGATGACGACGATAAGGTTTAA



[View online »](#)

Protein Sequence: >RC233804 representing NM_001270455
Red=Cloning site Green=Tags(s)

MASASSSRAGVALPFEKSQLTLKVVSAKPKVHNRQPRINSYVEVAVDGLPSETKKTGKRIGSELLWNEI
 IILNVTAQSHLDLKVWSCHTLRNELLGTASVNL SNVLKNNGGKMMENMQLTLNLQ TENKGSVVSGGELTIF
 LDGPTVDLGNVPNGSALTDGSQLPSRDSSGTAVAPENRHQPPSTNCFGGRSRTHRHSGASARTTPATGEQ
 SPGARSRHRQPVKNSGHSGLANGTVNDEPTTATDPEEPSVVGVTSPPAAPLSVTPNPNTTSLPAPATPAE
 GEEPSTSGTQQLPAAAQAPDALPAGWEQRELPNGRYYYYVDHNTKTTTWERPLPPG

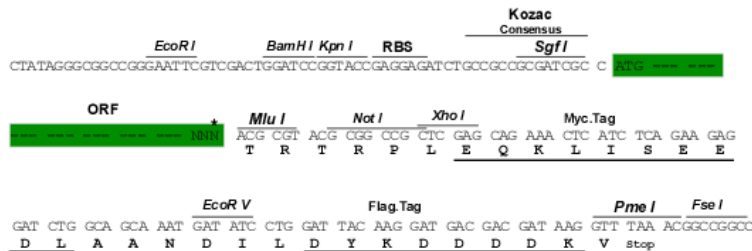
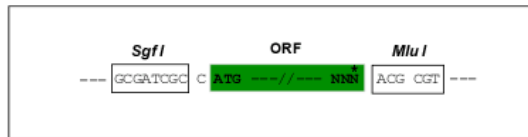
TRTRPLEQKLISEEDLAANDILDYKDDDDKV

Chromatograms: https://cdn.origene.com/chromatograms/mk8053_a05.zip

Restriction Sites: SgfI-MluI

Cloning Scheme:

Cloning sites used for ORF Shutting:



* The last codon before the Stop codon of the ORF

ACCN: NM_001270455

ORF Size: 1005 bp

OTI Disclaimer: The molecular sequence of this clone aligns with the gene accession number as a point of reference only. However, individual transcript sequences of the same gene can differ through naturally occurring variations (e.g. polymorphisms), each with its own valid existence. This clone is substantially in agreement with the reference, but a complete review of all prevailing variants is recommended prior to use. [More info](#)

OTI Annotation: This clone was engineered to express the complete ORF with an expression tag. Expression varies depending on the nature of the gene.

Components: The ORF clone is ion-exchange column purified and shipped in a 2D barcoded Matrix tube containing 10ug of transfection-ready, dried plasmid DNA (reconstitute with 100 ul of water).

Reconstitution Method:

1. Centrifuge at 5,000xg for 5min.
2. Carefully open the tube and add 100ul of sterile water to dissolve the DNA.
3. Close the tube and incubate for 10 minutes at room temperature.
4. Briefly vortex the tube and then do a quick spin (less than 5000xg) to concentrate the liquid at the bottom.
5. Store the suspended plasmid at -20°C. The DNA is stable for at least one year from date of shipping when stored at -20°C.

RefSeq: [NM_001270455.2](#)

RefSeq Size: 2682 bp

RefSeq ORF: 1008 bp

Locus ID: 11060

UniProt ID: [O00308](#)

Cytogenetics: 16q22.1

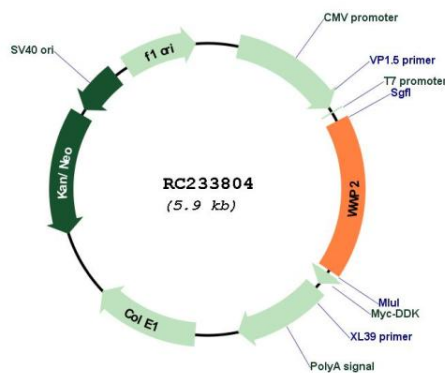
Protein Families: Druggable Genome

Protein Pathways: Ubiquitin mediated proteolysis

MW: 35.2 kDa

Gene Summary: This gene encodes a member of the Nedd4 family of E3 ligases, which play an important role in protein ubiquitination. The encoded protein contains four WW domains and may play a role in multiple processes including chondrogenesis and the regulation of oncogenic signaling pathways via interactions with Smad proteins and the tumor suppressor PTEN. Alternatively spliced transcript variants encoding multiple isoforms have been observed for this gene, and a pseudogene of this gene is located on the long arm of chromosome 10. [provided by RefSeq, Jul 2012]

Product images:



Circular map for RC233804