

## Product datasheet for RC233792

### EGR3 (NM\_001199881) Human Tagged ORF Clone

#### Product data:

Product Type:	Expression Plasmids
Product Name:	EGR3 (NM_001199881) Human Tagged ORF Clone
Tag:	Myc-DDK
Symbol:	EGR3
Synonyms:	EGR-3; PILOT
Mammalian Cell Selection:	Neomycin
Vector:	pCMV6-Entry (PS100001)
E. coli Selection:	Kanamycin (25 ug/mL)
ORF Nucleotide Sequence:	>RC233792 representing NM_001199881 Red=Cloning site Blue=ORF Green=Tags(s)

TTTTGTAATACGACTCACTATAGGGCGCCGGGAATTCGTCGACTGGATCCGGTACCGAGGAGATCTGCC  
GCC**CGGATCGCC**

ATGGACATCGGTCTGACCAACGAGAAGCCCAACCCGGAATCTCTTACTCCGGCTCCTTCCAGCCAGCCC  
CCGGCAACAAGACCGTGACCTACTTGGGAAAGTTCGCCTTCGACTCCCCTTCCAAGTGGTCCAGGACAA  
CATCATTAGCCTCATGAGCGCCGGCATCTTGGGGTGCCTCCGGCTTCCAGGGCGCTCAGCACGCAGACG  
TCCACGGCCAGCATGGTGCAGCCACCGCAGGGTACGTGGAGGCCATGTATCCCGCTACCCCCCTACT  
CCAAGTCCGGCGACCTCTACTCAGAGCCGTGTCTTCCACGACCCCAAGGCAATCCCGGGCTCGCCTA  
TTCCCCCAGGATTACCAATCGGCCAAGCCGGCGTTGGACAGCAATCTCTTCCCATGATTCCTGACTAC  
AACCTCTACCACCACCCCAACGACATGGGCTCCATTCCGGAGCACAAGCCCTTCCAGGGCATGGACCCCA  
TCCGGGTCAACCCGCCCTATTACCCCTCTGGAGACCAAGGCAATCAAAGACAAGCAGATCCACCC  
GGGCTTGGCAGCCTGCCAGCCGCGCTCACCTCAAGCCATCCGGCCCCGCAAGTACCCCAACCGG  
CCTAGCAAGACACCGTCCACGAACGGCCACGCGTGCCTCCGGCCGAGGGCTGCCAGCCGCTTTCAGCC  
GTTCCGACGAGCTGACCCGGCACCTGCGCATCCACACGGGCCACAAGCCCTTCCAGTCCGGATCTGCAT  
GCGGAGCTTACGCCGACGACCACTCACCCTCACATCCGCACTCATACGGGCGAGAAGCCCTTGGCC  
TGGAGTTCTGCGGGCGCAAGTTTGCAGCAGCGACGAGCGCAAGCCACGCCAAGATCCACCTCAAGC  
AAAAGGAGAAGAAGCGGAGAAGGGCGGTGCACCTCTGCATCCTCGGCCCCCCCGTGTGCTGGCCCC  
CGTGGTACCACCTGCGCC

AG**CGGACCG**ACGCGTACGCGCCGCTCGAGCAGAACTCATCTCAGAAGAGGATCTGGCAGCAAATGATATCC  
TGGATTACAAGGATGACGACGATAAGGTTTAA



[View online »](#)

**Protein Sequence:** >RC233792 representing NM\_001199881  
 Red=Cloning site Green=Tags(s)

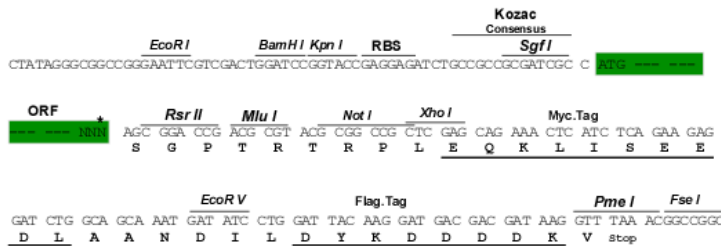
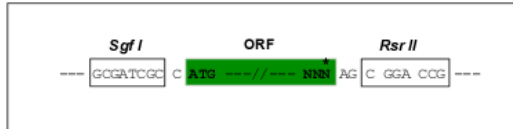
MDIGLTNEKPNPELSYSGSFQAPGNKTVTYLGKFAFDSPSNWCQDNIISLMSAGILGVPPASGALSTQT  
 STASMVQPPQGDVEAMYPALPPYSNCGDLYSEPVSFHDPQGNPGLAYSPQDYQSAKPALDSNLFPMIPDY  
 NLYYHPNDMGSIPEHKPFQGMPIRVNPPPIPTLETIKAFKDKQIHPFGSLPQPPLTLKPIRPRKYPNR  
 PSKTPLHERPHACPAEGCDRRFSRSDDELTRHLRIHTGHKPFQCRICMRSFSRSDHLTTHIRHTHTGEKPPA  
 CEF CGRKFARSDEKRHAKIHLKQKEKKAKEGGAPSASSAPPVSLAPVVTTC A

SGPTRTRPLEQKLI SEEDLAANDILDYKDDDDKV

**Restriction Sites:** SgfI-RsrII

**Cloning Scheme:**

Cloning sites used for ORF Shuttling:



\* The last codon before the Stop codon of the ORF

**ACCN:** NM\_001199881

**ORF Size:** 999 bp

**OTI Disclaimer:** The molecular sequence of this clone aligns with the gene accession number as a point of reference only. However, individual transcript sequences of the same gene can differ through naturally occurring variations (e.g. polymorphisms), each with its own valid existence. This clone is substantially in agreement with the reference, but a complete review of all prevailing variants is recommended prior to use. [More info](#)

**OTI Annotation:** This clone was engineered to express the complete ORF with an expression tag. Expression varies depending on the nature of the gene.

**Components:** The ORF clone is ion-exchange column purified and shipped in a 2D barcoded Matrix tube containing 10ug of transfection-ready, dried plasmid DNA (reconstitute with 100 ul of water).

**Reconstitution Method:**

1. Centrifuge at 5,000xg for 5min.
2. Carefully open the tube and add 100ul of sterile water to dissolve the DNA.
3. Close the tube and incubate for 10 minutes at room temperature.
4. Briefly vortex the tube and then do a quick spin (less than 5000xg) to concentrate the liquid at the bottom.
5. Store the suspended plasmid at -20°C. The DNA is stable for at least one year from date of shipping when stored at -20°C.

**RefSeq:** [NM\\_001199881.2](#)

**RefSeq Size:** 3912 bp

**RefSeq ORF:** 1002 bp

**Locus ID:** 1960

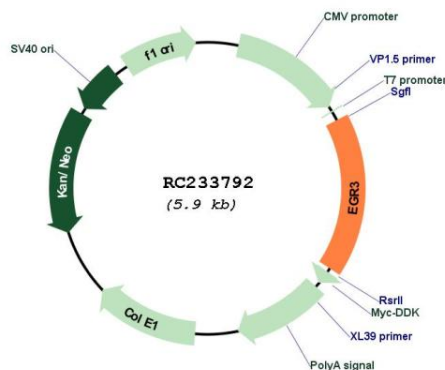
**UniProt ID:** [Q06889](#)

**Cytogenetics:** 8p21.3

**MW:** 37.2 kDa

**Gene Summary:** This gene encodes a transcriptional regulator that belongs to the EGR family of C2H2-type zinc-finger proteins. It is an immediate-early growth response gene which is induced by mitogenic stimulation. The protein encoded by this gene participates in the transcriptional regulation of genes in controlling biological rhythm. It may also play a role in a wide variety of processes including muscle development, lymphocyte development, endothelial cell growth and migration, and neuronal development. Alternative splicing results in multiple transcript variants encoding distinct isoforms.[provided by RefSeq, Dec 2010]

## Product images:



Circular map for RC233792