

Product datasheet for **RC233773**

DEDD2 (NM_001270614) Human Tagged ORF Clone

Product data:

Product Type: Expression Plasmids
Product Name: DEDD2 (NM_001270614) Human Tagged ORF Clone
Tag: Myc-DDK
Symbol: DEDD2
Synonyms: FLAME-3; FLAME3
Mammalian Cell Selection: Neomycin
Vector: pCMV6-Entry (PS100001)
E. coli Selection: Kanamycin (25 ug/mL)
ORF Nucleotide Sequence: >RC233773 representing NM_001270614
Red=Cloning site Blue=ORF Green=Tags(s)

TTTTGTAATACGACTCACTATAGGGCGGCCGGAATTCGTCGACTGGATCCGGTACCGAGGAGATCTGCC
GCC**CGATCGCC**

ATGGCGCTATCCGGTTCGACCCCGCCCGTCTGGGAGGAGGATGAGTGCCTGGACTACTACGGGATGC
TGTCGCTTCACCGTATGTTTCGAGGTGGTGGCGGGCAACTGACCGAGTGCAGCTGGAGCTCCTGGCCTT
TCTGCTGGATGAGGCTCCTGGCGCCCGGAGGCTTAGCCGGGCCCGCAGCGGCTAGAGCTCCTGCTG
GAGCTGGAGCGCCGCGGCGAGTGCAGCAGAGCAACCTGCGGCTGCTGGGCAACTCCTGCGCGTCTGG
CCCGCCACGACCTGCTGCCGACCTGGCGCGCAAGCGGCCCGCCAGTGTCTCCAGAACGCTATAGCTA
TGGCACCTCCAGCTCTTCAAAGAGGACAGAGGGTAGTGCCTGCCGTCGGCAGTCAAGCAGTTCTGCA
AATTCTCAGCAGGGTCAGTGGGAGACAGGCTCCCCCAACCAAGCGGCAGCGGCCGAGTCGGGGCCGGC
CCAGTGGTGGTGCAGACGGCGCGGAGAGGGGCCAGCCGACCCAGCAGCAGTCAAGAGCCCGCCAG
ACCTTCTCTGAAGGCAAAGTGACCTGTGACATCCGGTCCGGTTCGAGCAGAGTACTGCGAGCATGGG
CCAGCCTTGGAGCAGGGCGTGGCATCCCGCGGCCAGGCGCTGGCGCGCAGCTGGACGTGTTTGGGC
AGGCCACCGCAGTGTGCGCTCAAGGACCTGGGCTCTGTGGTTGTGACATCAAGTTCTCAGAGCTCTC
CTATCTGGACGCCTTCTGGGCGACTACCTGAGTGGCGCCCTGCTGCAGGCCCTGCGGGGCGTGTTCCTG
ACTGAGGCCCTGCGAGAGGCTGTGGCCGGGAGGCTGTTTCGCTGCTGGTCAAGTGTGATGAGGCTGACT
ATGAGGCTGGCCGCGCCGCTGTTGCTGATGGAGGAGGAAGGGGGCGGCCCGCCGACAGAGGCCCTCC

ACGCGTACGCGGCCGCTCGAGCAGAACTCATCTCAGAAGAGGATCTGGCAGCAAATGATATCCTGGATT
ACAAGGATGACGACGATAAGGTTTAA



[View online »](#)

Protein Sequence: >RC233773 representing NM_001270614
Red=Cloning site Green=Tags(s)

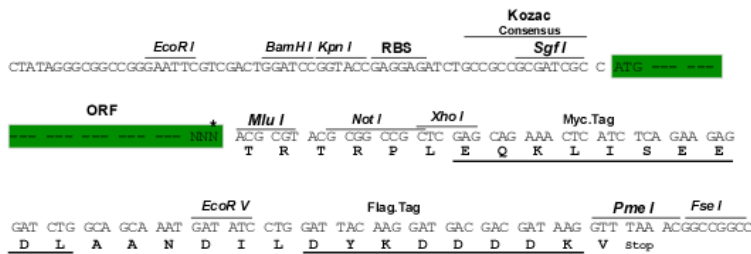
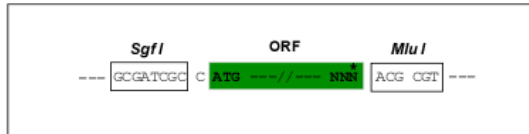
MALSGSTPAPCWEEDCLDYYGMLSLHRMFEVVGQLTECELELLAFLLDEAPGAAGGLARARSGLELLL
 ELERRGQCDESNLRLLGQLLRVLARHDLLPHLARKRRRPVSPERYSGTSSSSKRTEGSCRRRRQSSSSA
 NSQQGQWETGSPPTKRQRSRGRPSGGARRRRRGAPAAPQQQSEPARPSSEGKVTCDIRLRVRAEYCEHG
 PALEQGVASRRPQALARQLDVFQATAVLRSRDLGSVVCIDIKFSELSYLDAFWGDYLSGALLQALRGVFL
 TEALREAVGREAVRLLVSVDEADYEAGRRRLLLMEEEGRRRPEAS

TRTRPLEQKLISEEDLAANDILDYKDDDDKV

Restriction Sites: SgfI-MluI

Cloning Scheme:

Cloning sites used for ORF Shuttling:



* The last codon before the Stop codon of the ORF

ACCN: NM_001270614

ORF Size: 978 bp

OTI Disclaimer: The molecular sequence of this clone aligns with the gene accession number as a point of reference only. However, individual transcript sequences of the same gene can differ through naturally occurring variations (e.g. polymorphisms), each with its own valid existence. This clone is substantially in agreement with the reference, but a complete review of all prevailing variants is recommended prior to use. [More info](#)

OTI Annotation: This clone was engineered to express the complete ORF with an expression tag. Expression varies depending on the nature of the gene.

Components: The ORF clone is ion-exchange column purified and shipped in a 2D barcoded Matrix tube containing 10ug of transfection-ready, dried plasmid DNA (reconstitute with 100 ul of water).

Reconstitution Method:

1. Centrifuge at 5,000xg for 5min.
2. Carefully open the tube and add 100ul of sterile water to dissolve the DNA.
3. Close the tube and incubate for 10 minutes at room temperature.
4. Briefly vortex the tube and then do a quick spin (less than 5000xg) to concentrate the liquid at the bottom.
5. Store the suspended plasmid at -20°C. The DNA is stable for at least one year from date of shipping when stored at -20°C.

RefSeq: [NM_001270614.2](#)

RefSeq Size: 1943 bp

RefSeq ORF: 981 bp

Locus ID: 162989

UniProt ID: [Q8WXF8](#)

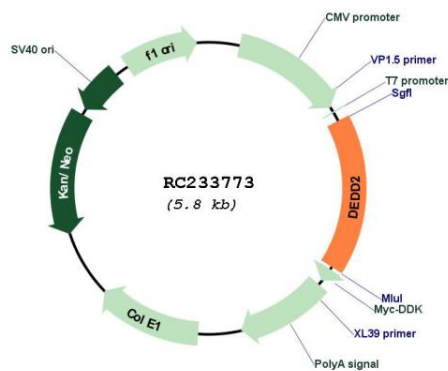
Cytogenetics: 19q13.2

Protein Families: Druggable Genome, Transcription Factors

MW: 36.6 kDa

Gene Summary: This gene encodes a nuclear-localized protein containing a death effector domain (DED). The encoded protein may regulate the trafficking of caspases and other proteins into the nucleus during death receptor-induced apoptosis. Alternative splicing results in multiple transcript variants. [provided by RefSeq, Jul 2012]

Product images:



Circular map for RC233773