

Product datasheet for RC233718

LAT2 (SLC7A8) (NM_001267037) Human Tagged ORF Clone

Product data:

Product Type:	Expression Plasmids
Product Name:	LAT2 (SLC7A8) (NM_001267037) Human Tagged ORF Clone
Tag:	Myc-DDK
Symbol:	LAT2
Synonyms:	LAT2; LPI-PC1
Mammalian Cell Selection:	Neomycin
Vector:	pCMV6-Entry (PS100001)
E. coli Selection:	Kanamycin (25 ug/mL)
ORF Nucleotide Sequence:	>RC233718 representing NM_001267037 Red=Cloning site Blue=ORF Green=Tags(s)

TTTTGTAATACGACTCACTATAGGGCGGCCGGAATTCGTCGACTGGATCCGGTACCGAGGAGATCTGCC
GCC**CGATCGCC**

ATGGGTCAACTGTTCCAGTGTGCGGTGGGCCACCCGGTTCAGACATCTTCACAGCTGGGAAGCTCCTG
GCCTTGGCCCTGATTATCATCATGTTGATTGTACAGATATGCAAAGAACCTTCCAGAGCCATCTTCAT
CTCCATCCACTGGTCACATTTGTGTATGTCTTTGCCAATGTCGCTTATGTCAGTCAATGTCCCCCAG
GAGCTGCTGGCATCCAACGCCGTCGCTGTGACTTTTGGAGAGAAGCTCCTAGGAGTCATGGCCTGGATCA
TGCCCATTTCTGTTGCCCTGTCCACATTTGGAGGAGTTAATGGGTCTCTTTCACCTCCTCTCGGCTGTT
CTTCGCTGGAGCCGAGAGGGCCACCTTCCCAGTGTGTTGGCCATGATCCACGTGAAGCGCTGCACCCCA
ATCCCAGCCCTGCTTTCACATGCATCTCCACCCTGCTGATGCTGGTCACCAGCGACATGTACACTCA
TCAACTATGTTGGCTTCACTCACTACCTCTTCTATGGGGTCAAGGTTGCTGGACAGATAGTCTTCTGCTG
GAAGAAGCCTGATATCCCCGCCCATCAAGATCAACCTGCTGTTCCCCATCATCTACTTGTCTGTTCTGG
GCCTTCTGCTGGTCTTTCAGCCTGTGGTCAGAGCCGGTGGTGTGTGGCATTGGCCTGGCCATCATGCTGA
CAGGAGTGCTGTCTATTTCTGGGTGTTTACTGGCAACAAGCCCAAGTGTTCAGTGACTTCATTGA
GCTGCTAACCCCTGGTGAGCCAGAAGATGTGTGGTGTGTACCCCGAGGTGGAGCGGGGCTCAGGGACA
GAGGAGGCTAATGAGGACATGGAGGAGCAGCAGCCCATGTACCAACCCACTCCCACGAAGGACAAGG
ACGTGGCGGGGCAGCCCCAGCCC

ACGCGTACGCGGCCGCTCGAGCAGAACTCATCTCAGAAGAGGATCTGGCAGCAAATGATATCCTGGATT
ACAAGGATGACGACGATAAGGTTTAA



[View online »](#)

Protein Sequence: >RC233718 representing NM_001267037
Red=Cloning site Green=Tags(s)

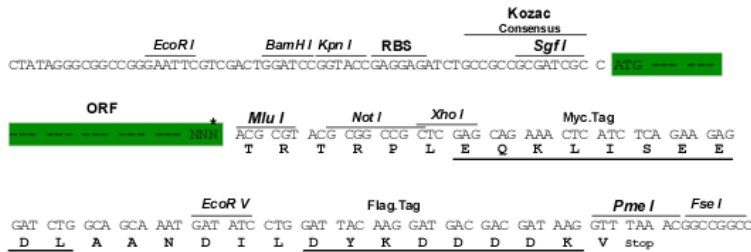
MGQLFQCAVGHGPGSRHLHSWEAPGLGPDYHHGDCTDMQRNLPRAIFISIPLVTFVYVVFANVAYVTAMSPQ
 ELLASNAVAVTFGEKLLGVMWIMPI SVALSTFGGVNGSLFTSSRLFFAGAREGHLPSVLAMIHVKRCTP
 IPALLFTCISTLLMLVTSDMYTLIN YVGFINL FYGVT VAGQIVLRWKKPDIPRPIKINLLFP I IYLLFW
 AFLLVFSLWSEPVVCGIGLAIML TGVPVYFLGVYVWQH KPKCF SDF IELL TLVSQKMCVVVYPEVERGSGT
 EEANEDMEEQQQPMYQPTPTKDKDVAGQPQP

TRTRPLEQKLISEEDLAANDILDYKDDDDKV

Restriction Sites: SgfI-MluI

Cloning Scheme:

Cloning sites used for ORF Shuttling:



* The last codon before the Stop codon of the ORF

ACCN: NM_001267037

ORF Size: 933 bp

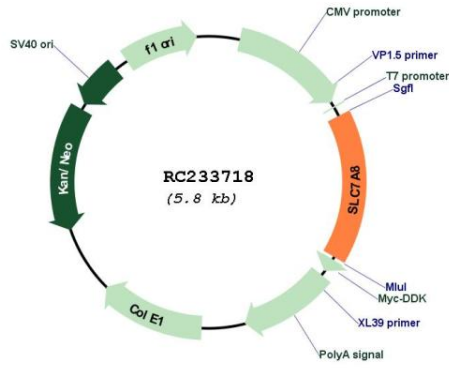
OTI Disclaimer: The molecular sequence of this clone aligns with the gene accession number as a point of reference only. However, individual transcript sequences of the same gene can differ through naturally occurring variations (e.g. polymorphisms), each with its own valid existence. This clone is substantially in agreement with the reference, but a complete review of all prevailing variants is recommended prior to use. [More info](#)

OTI Annotation: This clone was engineered to express the complete ORF with an expression tag. Expression varies depending on the nature of the gene.

Components: The ORF clone is ion-exchange column purified and shipped in a 2D barcoded Matrix tube containing 10ug of transfection-ready, dried plasmid DNA (reconstitute with 100 ul of water).

Reconstitution Method:	<ol style="list-style-type: none">1. Centrifuge at 5,000xg for 5min.2. Carefully open the tube and add 100ul of sterile water to dissolve the DNA.3. Close the tube and incubate for 10 minutes at room temperature.4. Briefly vortex the tube and then do a quick spin (less than 5000xg) to concentrate the liquid at the bottom.5. Store the suspended plasmid at -20°C. The DNA is stable for at least one year from date of shipping when stored at -20°C.
RefSeq:	NM_001267037.1 , NP_001253966.1
RefSeq Size:	3041 bp
RefSeq ORF:	936 bp
Locus ID:	23428
UniProt ID:	Q9UHI5
Cytogenetics:	14q11.2
Protein Families:	Druggable Genome, Transmembrane
MW:	35.1 kDa
Gene Summary:	Sodium-independent, high-affinity transport of small and large neutral amino acids such as alanine, serine, threonine, cysteine, phenylalanine, tyrosine, leucine, arginine and tryptophan, when associated with SLC3A2/4F2hc. Acts as an amino acid exchanger. Has higher affinity for L-phenylalanine than LAT1 but lower affinity for glutamine and serine. L-alanine is transported at physiological concentrations. Plays a role in basolateral (re)absorption of neutral amino acids. Involved in the uptake of methylmercury (MeHg) when administered as the L-cysteine or D,L-homocysteine complexes, and hence plays a role in metal ion homeostasis and toxicity. Involved in the cellular activity of small molecular weight nitrosothiols, via the stereoselective transport of L-nitrosocysteine (L-CNSO) across the transmembrane. Plays an essential role in the reabsorption of neutral amino acids from the epithelial cells to the bloodstream in the kidney.[UniProtKB/Swiss-Prot Function]

Product images:



Circular map for RC233718