

## Product datasheet for RC233689

### SSBP2 (NM\_001256736) Human Tagged ORF Clone

#### Product data:

Product Type: Expression Plasmids  
 Product Name: SSBP2 (NM\_001256736) Human Tagged ORF Clone  
 Tag: Myc-DDK  
 Symbol: SSBP2  
 Synonyms: HSPC116; SOSS-B2  
 Mammalian Cell Selection: Neomycin  
 Vector: pCMV6-Entry (PS100001)  
 E. coli Selection: Kanamycin (25 ug/mL)  
 ORF Nucleotide Sequence: >RC233689 representing NM\_001256736  
 Red=Cloning site Blue=ORF Green=Tags(s)

TTTTGTAATACGACTCACTATAGGGCGGCCGGAATTCGTCGACTGGATCCGGTACCGAGGAGATCTGCC  
 GCC**CGATCGCC**

ATGTACGGCAAAGGCAAGAGTAACAGCAGCGCCGTCCCGTCCGACAGCCAGGCCCGGGAGAAGTTAGCAC  
 TCTACGTATATGAATATCTGCTCCATGTAGGAGCTCAGAAATCAGCTCAAACATTTTTATCAGAGATAAG  
 ATGGGAAAAAACATCACATTGGGGGAACCACCAGGATCTTACATTCTGGTGGTGTGATTTTGGGAT  
 CTCTACTGTGCAGCTCCAGAGAGACGTGAAACATGTGAACACTCAAGTGAAGCAAAGCCTTCCATGATT  
 ACCTTTTATGTCACCTCGGTACCCTGGAGGTCCAAGGCCCCATTGAGGATACCTAATCAGGCCTTGG  
 AGGTGTCCAGGAAGTCAGCCATTACTCCCCAGTGAATGGATCCAACCTCGACAACAAGGACATCCAAAT  
 ATGGGTGGGCAATGCAGAGAATGACTCCTCCAAGAGGAATGGTCCCTTAGGACCACAGAACTATGGAG  
 GTGCAATGAGACCCCACTGAATGCTTTAGGTGGCCCTGGAATGCCTGGAATGAACATGGGTCCAGGTGG  
 TGGTAGACCTTGGCCAAACCAACAAATGCCAATCAATACCACTCCTCAGCATCTCCTGGGAATTAT  
 GTAGGTCTCCAGGAGGTGGAGGGCCACCAGGAACACCCATCATGCCTAGTCCAGCAGATTCAACCAACT  
 CTGGTGATAACATGTATACTTTAATGAATGCAGTACCTCCTGGACCTAACAGACCTAATTTTCCAATGGG  
 TCCTGGGTGAGATGGTCCCATGGTGGATTAGGAGGAATGGAGTCACATCACATGAATGGCTCTTTAGGC  
 TCAGGAGATATGGACAGTATTTCCAAGTACTCCCTAGCATGACAATGAGCGTG

**ACGCGT**ACGCGGCCGCTCGAGCAGAAACTCATCTCAGAAGAGGATCTGGCAGCAAATGATATCCTGGATT  
 ACAAGGATGACGACGATAAGGTTAA



[View online »](#)

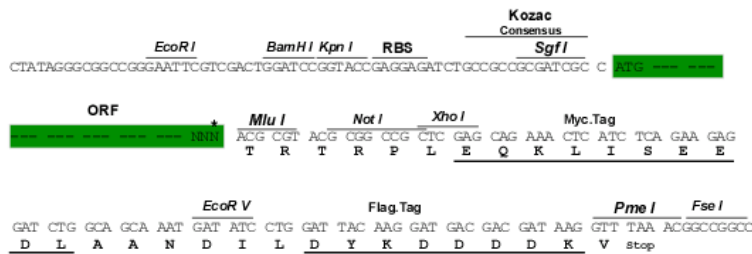
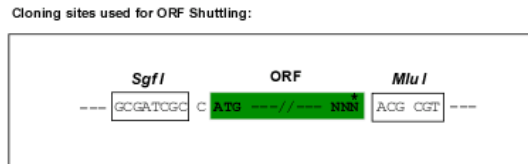
**Protein Sequence:** >RC233689 representing NM\_001256736  
Red=Cloning site Green=Tags(s)

MYGKKGKSNSSAVPSDSQAREKLALYVVEYLLHVGAQKSAQTFLSEIRWEKNITLGEPPGFLHSWVCVFD  
 LYCAAPERRETCEHSSEAKAFHDYPFMSPRYPGGPRPPLRIPNQALGGVPGSQPLLP SGMDPTRQQGHPN  
 MGGPMQRMTPPRGMVPLGPQNYGGAMRPLNALGGPGMGMNMGPGGGRPWPNPTNANSIPYSSASPGNY  
 VGPPGGGGPPGTPIMPSPADSTNSGDNMYTLMNAVPPGNRPNFPMGPGSDGPMGGLGGMESHMMNGSLG  
 SGMDSISKYSPSMTMSV

TRTRPLEQKLISEEDLAANDILDYKDDDDKV

**Restriction Sites:** SgfI-MluI

**Cloning Scheme:**



\* The last codon before the Stop codon of the ORF

**ACCN:** NM\_001256736

**ORF Size:** 894 bp

**OTI Disclaimer:** The molecular sequence of this clone aligns with the gene accession number as a point of reference only. However, individual transcript sequences of the same gene can differ through naturally occurring variations (e.g. polymorphisms), each with its own valid existence. This clone is substantially in agreement with the reference, but a complete review of all prevailing variants is recommended prior to use. [More info](#)

**OTI Annotation:** This clone was engineered to express the complete ORF with an expression tag. Expression varies depending on the nature of the gene.

**Components:** The ORF clone is ion-exchange column purified and shipped in a 2D barcoded Matrix tube containing 10ug of transfection-ready, dried plasmid DNA (reconstitute with 100 ul of water).

**Reconstitution Method:**

1. Centrifuge at 5,000xg for 5min.
2. Carefully open the tube and add 100ul of sterile water to dissolve the DNA.
3. Close the tube and incubate for 10 minutes at room temperature.
4. Briefly vortex the tube and then do a quick spin (less than 5000xg) to concentrate the liquid at the bottom.
5. Store the suspended plasmid at -20°C. The DNA is stable for at least one year from date of shipping when stored at -20°C.

**RefSeq:** [NM\\_001256736.2](#)

**RefSeq Size:** 4252 bp

**RefSeq ORF:** 897 bp

**Locus ID:** 23635

**UniProt ID:** [P81877](#)

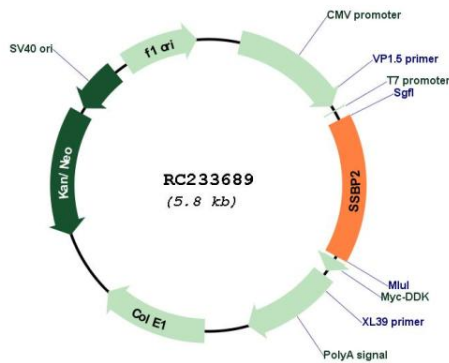
**Cytogenetics:** 5q14.1

**Protein Families:** Transcription Factors

**MW:** 31.9 kDa

**Gene Summary:** This gene encodes a subunit of a protein complex that interacts with single-stranded DNA and is involved in the DNA damage response and maintenance of genome stability. The encoded protein may also play a role in telomere repair. A variant of this gene may be associated with survival in human glioblastoma patients. [provided by RefSeq, Sep 2016]

### Product images:



Circular map for RC233689