

Product datasheet for RC233664

PARVB (NM_001243386) Human Tagged ORF Clone

Product data:

Product Type:	Expression Plasmids
Product Name:	PARVB (NM_001243386) Human Tagged ORF Clone
Tag:	Myc-DDK
Symbol:	PARVB
Synonyms:	CGI-56
Mammalian Cell Selection:	Neomycin
Vector:	pCMV6-Entry (PS100001)
E. coli Selection:	Kanamycin (25 ug/mL)
ORF Nucleotide Sequence:	>RC233664 representing NM_001243386 Red=Cloning site Blue=ORF Green=Tags(s)

TTTTGTAATACGACTCACTATAGGGCGGCCGGAATTCGTCGACTGGATCCGGTACCGAGGAGATCTGCC
GCC**CGGATCGCC**

ATGTCCCCGCCCTGGTGGATGTTACCCTGAAGACACCCAGCTTGAGGAGAACGAGGAGCGCACGATGA
TTGACCCCACTTCCAAGGAAGACCCCAAGTTCAAGGAAGTGGTCAAGGTCTCCTCGACTGGATTAATGA
CGTGCTGGTGGAGGAGAGGATCATTGTGAAGCAGCTGGAGGAAGACCTGTATGACGGCCAGGTGCTGCAG
AAGCTCTTGAAAACTGGCAGGGTGAAGCTGAATGTGGCTGAGGTGACACAGTCCGAAATAGGGCAGA
AACAGAAGCTGCAGACGGTGTGGAAGCAGTACATGACCTGCTGCGGCCCGAGGCTGGGCGCTCCGGTG
GAGCGTGGACTCAATTCACGGGAAGAACCTGGTGGCCATCCTCCACCTGCTGGTCTCTTGCCATGCAC
TTCAGGGCCCCATCCGCCTTCTGAGCATGTAACGGTGCAGGTGGTGGTCTGCGGAAACGGGAAGGCC
TGCTGCATTCCAGCCACATCTCGGAGGAGCTGACCACAACACAGAGATGATGATGGGCCGTTTCGAGCG
GGATGCCTTCGACACGCTGTTTCGACCACGCCCCGATAAGCTCAGCGTGGTGAAGAAGTTTCGAGATGGC
GTGTACCTGGTTCTGCTCATGGCCTTCTGGAAGACTACTTTGTTCTCTCCACCACTTCTACCTGACTC
CGGAAAGCTTCGATCAGAAGGTCCAAATGTGTCTTCGCTTGGAGCTGATGCTGGACGGAGGCCTCAA
GAAACCAAGGCTCGTCTGAAGACGTGGTTAAGTGGACCTCAAATCCACCTGAGGGTCTTTACAAC
CTGTTACCAAGTACAAGAACGTGGAG

ACGCGTACGCGGCCGCTCGAGCAGAAACTCATCTCAGAAGAGGATCTGGCAGCAAATGATATCCTGGATT
ACAAGGATGACGACGATAAGGTTTAA



[View online »](#)

Protein Sequence: >RC233664 representing NM_001243386
Red=Cloning site Green=Tags(s)

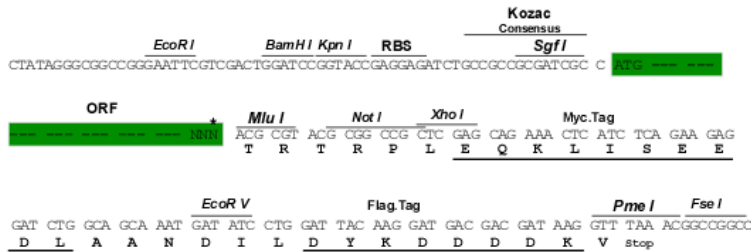
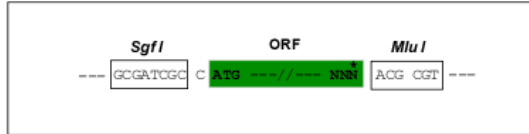
MSPALVDVHPEDTQLEENEERTMIDPTSKEDPKFKELVKVLLDWINDVLVEERIIIVKQLEEDLYDGGVQLQ
 KLLLEKLAGCKLNVAEVTQSEIGQKQKLQTVLEAVHDLLRPRGWALRWSVDSIHGKNLVAIHLHLLVSLAMH
 FRAPIRLPEHVTVQVVVVRKREGLLHSSHISEELTTTTEMMGRFERDAFDLFDHAPDKLSVVKKFADG
 VYLVLMLGLEDYFVPLHHFYLTPESEFDQKVHNVSF AFELMLDGLGKKPKARPEDVVNLDLKSTLRVLYN
 LFTKYKNVE

TRTRPLEQKLISEEDLAANDILDYKDDDDKV

Restriction Sites: SgfI-MluI

Cloning Scheme:

Cloning sites used for ORF Shuttling:



* The last codon before the Stop codon of the ORF

ACCN: NM_001243386

ORF Size: 867 bp

OTI Disclaimer: The molecular sequence of this clone aligns with the gene accession number as a point of reference only. However, individual transcript sequences of the same gene can differ through naturally occurring variations (e.g. polymorphisms), each with its own valid existence. This clone is substantially in agreement with the reference, but a complete review of all prevailing variants is recommended prior to use. [More info](#)

OTI Annotation: This clone was engineered to express the complete ORF with an expression tag. Expression varies depending on the nature of the gene.

Components: The ORF clone is ion-exchange column purified and shipped in a 2D barcoded Matrix tube containing 10ug of transfection-ready, dried plasmid DNA (reconstitute with 100 ul of water).

Reconstitution Method:

1. Centrifuge at 5,000xg for 5min.
2. Carefully open the tube and add 100ul of sterile water to dissolve the DNA.
3. Close the tube and incubate for 10 minutes at room temperature.
4. Briefly vortex the tube and then do a quick spin (less than 5000xg) to concentrate the liquid at the bottom.
5. Store the suspended plasmid at -20°C. The DNA is stable for at least one year from date of shipping when stored at -20°C.

RefSeq: [NM_001243386.1](#), [NP_001230315.1](#)

RefSeq Size: 1554 bp

RefSeq ORF: 870 bp

Locus ID: 29780

UniProt ID: [Q9HBI1](#)

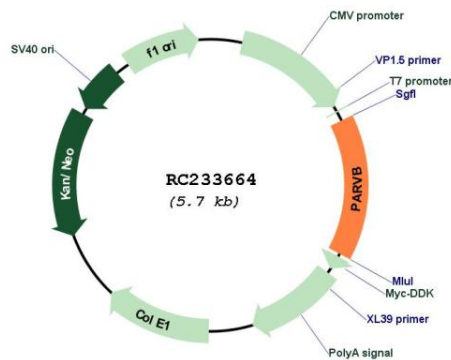
Cytogenetics: 22q13.31

Protein Pathways: Focal adhesion

MW: 33.7 kDa

Gene Summary: This gene encodes a member of the parvin family of actin-binding proteins, which play a role in cytoskeleton organization and cell adhesion. These proteins are associated with focal contacts and contain calponin homology domains that bind to actin filaments. This family member binds to alphaPIX and alpha-actinin, and it can inhibit the activity of integrin-linked kinase. This protein also functions in tumor suppression. Alternative splicing of this gene results in multiple transcript variants. [provided by RefSeq, Aug 2011]

Product images:



Circular map for RC233664