

Product datasheet for **RC233622**

RSRC1 (NM_001271834) Human Tagged ORF Clone

Product data:

Product Type:	Expression Plasmids
Product Name:	RSRC1 (NM_001271834) Human Tagged ORF Clone
Tag:	Myc-DDK
Symbol:	RSRC1
Synonyms:	BM-011; MRT70; SFRS21; SRrp53
Mammalian Cell Selection:	Neomycin
Vector:	pCMV6-Entry (PS100001)
E. coli Selection:	Kanamycin (25 ug/mL)
ORF Nucleotide Sequence:	>RC233622 representing NM_001271834 Red=Cloning site Blue=ORF Green=Tags(s)

TTTGTAAATACGACTCACTATAGGGCGGCCGGAATTCGTCGACTGGATCCGGTACCGAGGAGATCTGCC
 GCC**CGATCGCC**

ATGGGACGTCGGTCATCAGATACTGAAGAAGAAAGCAGAAGCAAGAGAAAAAGAAACACCGTAGACGGT
 CCTCCTCGAGCAGTTCTTCAGATAGTAGAACATACAGCCGAAAGAAAGGAGGAAGGAAATCAAGATCAAA
 GTCAAGATCTTGGTCCAGAGATCTTCAGCCTCGTTCACATTCTTATGATAGAAGACGCAGGCATCGATCA
 AGCAGTAGCTCTTCTTATGGCTCCAGAAGGAAACGAAGTCGAAGTCGTTCAAGGGGTCGAGGAAATCCT
 ATAGAGTTCAGAGGTCTAGGTCAAAAAGCAGAACAAAGAGGGAATCTGGAACATCAAAGCTGGATTAGA
 ACATCTGCCACCAGCTGAACAGGCCAAAGCCAGACTACAGCTGGTCTTGAAGCTGCTGCAAAAGCTGAT
 GAAGCATTGAAAGCCAAAGAAAGAAATGAGGAAGAAGCAAGAGAGAAAGGAGGAAGACCAAGCCACCC
 TGGTAGAACAAAGTAAAAAGAGTAAAGAAATTGAAGCTATTGAAAGTGATTCTTTTGTTCAGCAGACATT
 CAGATCAAGTAAAGAAGTCAAAAGTCAGTGGAACCTAGTGAAGTGAAACAAGCAACTTCAACATCAGGA
 CCAGCATCAGCAGTTGCTGATCCACCCAGTACTGAAAAAGAAATAGATCTACCAGCATCCCTACTGCTA
 TCAAGTACCAAGATGACAATCCCTGGCCCATCCAATTTATTTATCGAGAAAGCTGATGCTGAGGAAAA
 ATGGTTCAAGAGATTAATTGCTCTCCGACAAGAAAGACTAATGGGCAGTCCTGTGGCC

ACGCGTACGCGGCCGCTCGAGCAGAACTCATCTCAGAAGAGGATCTGGCAGCAATGATATCCTGGATT
 ACAAGGATGACGACGATAAGGTTTAA


[View online »](#)

Protein Sequence: >RC233622 representing NM_001271834

Red=Cloning site Green=Tags(s)

MGRRSSDTEEESRKRKKKHRRSSSSSSSDRTYSRKGGRKSRKSRWSRDLQPRSHSYDRRRRHRS
SSSSSYGRRKRSRSRGRGKSYRVQSRKSRTRRESGNIKAGLEHLPPAEQAKARLQLVLEAAKAD
EALKAKERNEEEAKRRKEEDQATLVEQVKRVKEIEAIESDSFVQQTRSSKEVKKSVEPSEVKQATSTSG
PASAVADPPSTEKEIDPTSIPTAIKYODDNSLAHPNLFIEKADAEKWKRLIALROERLMGSPVA

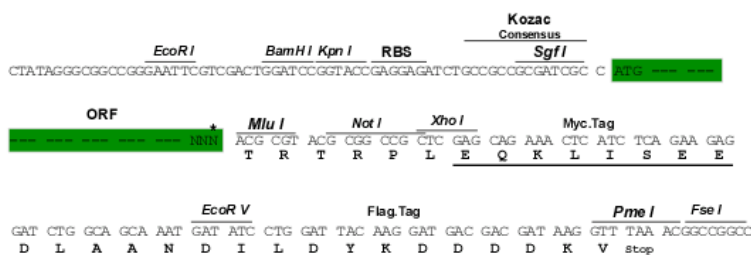
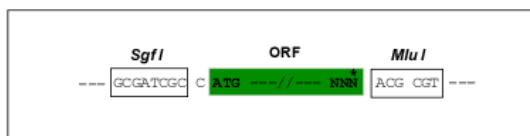
TRTRPLEQKLISEEDLAANDILDYKDDDDKV

Restriction Sites:

Sgfl-MluI

Cloning Scheme:

Cloning sites used for ORF Shuttling:



* The last codon before the Stop codon of the ORF

ACCN: NM 001271834

ORF Size: 828 bp

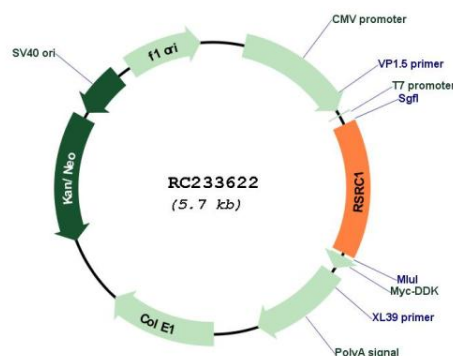
OTI Disclaimer: The molecular sequence of this clone aligns with the gene accession number as a point of reference only. However, individual transcript sequences of the same gene can differ through naturally occurring variations (e.g. polymorphisms), each with its own valid existence. This clone is substantially in agreement with the reference, but a complete review of all prevailing variants is recommended prior to use. [More info](#)

OTI Annotation: This clone was engineered to express the complete ORF with an expression tag. Expression varies depending on the nature of the gene.

Components: The ORF clone is ion-exchange column purified and shipped in a 2D barcoded Matrix tube containing 10ug of transfection-ready, dried plasmid DNA (reconstitute with 100 ul of water).

Reconstitution Method:	<ol style="list-style-type: none"> 1. Centrifuge at 5,000xg for 5min. 2. Carefully open the tube and add 100ul of sterile water to dissolve the DNA. 3. Close the tube and incubate for 10 minutes at room temperature. 4. Briefly vortex the tube and then do a quick spin (less than 5000xg) to concentrate the liquid at the bottom. 5. Store the suspended plasmid at -20°C. The DNA is stable for at least one year from date of shipping when stored at -20°C.
Note:	Plasmids are not sterile. For experiments where strict sterility is required, filtration with 0.22um filter is required.
RefSeq:	<u>NM_001271834.1, NP_001258763.1</u>
RefSeq Size:	1566 bp
RefSeq ORF:	831 bp
Locus ID:	51319
UniProt ID:	<u>Q96LZ7</u>
Cytogenetics:	3q25.32
MW:	32 kDa
Gene Summary:	<p>This gene encodes a member of the serine and arginine rich-related protein family. The encoded protein is involved in both constitutive and alternative mRNA splicing. This gene may be associated with schizophrenia. A pseudogene of this gene is located on chromosome 9. Alternative splicing results in multiple transcript variants encoding different isoforms. [provided by RefSeq, Nov 2012]</p>

Product images:



Circular map for RC233622