

## Product datasheet for RC233605

### Apoptosis repressor with CARD (NOL3) (NM\_001276319) Human Tagged ORF Clone

#### Product data:

Product Type:	Expression Plasmids
Product Name:	Apoptosis repressor with CARD (NOL3) (NM_001276319) Human Tagged ORF Clone
Tag:	Myc-DDK
Symbol:	Apoptosis repressor with CARD
Synonyms:	ARC; FCM; MYOCL1; MYP; NOP; NOP30
Mammalian Cell Selection:	Neomycin
Vector:	pCMV6-Entry (PS100001)
E. coli Selection:	Kanamycin (25 ug/mL)
ORF Nucleotide Sequence:	>RC233605 representing NM_001276319 Red=Cloning site Blue=ORF Green=Tags(s)

TTTTGTAATACGACTCACTATAGGGCGGCCGGAATTCGTCGACTGGATCCGGTACCGAGGAGATCTGCC  
GCC**CGATCGCC**

ATGCCAGTCCTGGGAAAGGCAGGGGAGGAGAGAGCCACGGCTGACGCTTGGGGACAGAAGGAGGAGC  
CTGAGGAGGAGACAGGACAGAGCGTCTGGAGAGGCAGGAGGACACCGAGTCCCCGTGTTGGCCTCCAGG  
TCCTGTGCTTGGGAGCCGTCCGGCGGCTGGGATCGAGCCCCGACAATGGGCAACCGCAGGAGCGGCCG  
TCAGAGACTATCGACCGGAGCGGAAACGCCTGGTCGAGACGCTGCAGGCGGACTCGGGACTGCTGTTGG  
ACGCGCTGCTGGCGGGGCGTCTCACCGGGCCAGAGTACGAGGCATTGGATGCACTGCCTGATGCCGA  
GCGCAGGGTGCGCCGCTACTGCTGCTGGTGCAGGGCAAGGGCGAGGCCGCTGCCAGGAGCTGCTACGC  
TGTGCCCAGCGTACCGCGGGCGCCGGACCCGCTTGGGACTGGCAGCACGTGGGTCCGGGCTACCGGG  
ACCGCAGCTATGACCCTCCATGCCCAGGCCACTGGACGCCGAGGCACCCGGCTCGGGGACCACATGCC  
CGGGTTGCCAGAGCTTCAGACCCTGACGAGGCCGGGGCCCTGAGGGCTCCGAGCGGTGCAATCCGGG  
ACCCCGGAGGAGCCAGAGCCAGAGCTGGAAGCTGAGGCCCTCTAAAGAGGCTGAACCGGAGCCGGAGCCAG  
AGCCAGAGCTGGAACCCGAGGCTGAAGCAGAACCAGAGCCGGAAGTGGAGCCAGAACCGGACCCAGAGCC  
CGAGCCGACTTCGAGGAAAGGGACGAGTCCGAAGATTCC

**ACGCGT**ACGCGGCCGCTCGAGCAGAAACTCATCTCAGAAGAGGATCTGGCAGCAAATGATATCCTGGATT  
ACAAGGATGACGACGATAAGGTTTAA



[View online »](#)

**Protein Sequence:** >RC233605 representing NM\_001276319

Red=Cloning site Green=Tags(s)

MPVLGKAGEERRATADAWGQKEEPEEETGQSVWRGRRTSPSPCWPPGPVLAEPSSGWDRAPTMGNAQERP  
SETIDRERKRLVETLQADSGLLLDALLARGVLTGPEYEALDALPDAERRVRRLLLLVQKGAEACQELLR  
CAQRTAGAPDPAWDQHVGPYRDRSYDPPCPGHWTPEAPGSGTTCPLPRASDPDEAGGPEGSEAVQSG  
TPEEPEPELEAEASKEAEPEPEPEPELEPEAEAEPEPEPEPEPDPEPEPDFEERDESEDS

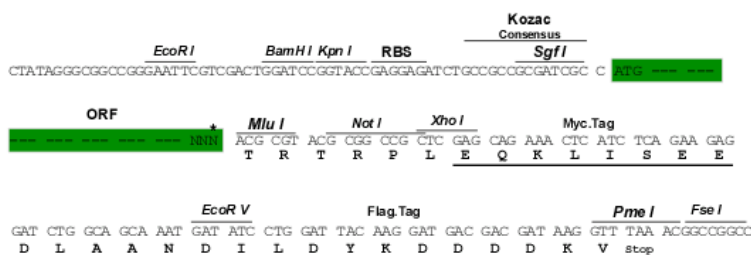
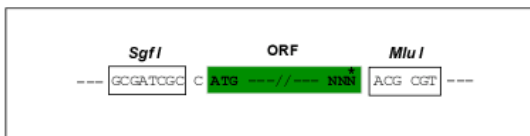
TRTRPLEQKLISEEDLAANDILDYKDDDDKV

**Restriction Sites:**

Sgfl-MluI

**Cloning Scheme:**

Cloning sites used for ORF Shuttling:



\* The last codon before the Stop codon of the ORF

**ACCN:** NM\_001276319

**ORF Size:** 810 bp

**OTI Disclaimer:** The molecular sequence of this clone aligns with the gene accession number as a point of reference only. However, individual transcript sequences of the same gene can differ through naturally occurring variations (e.g. polymorphisms), each with its own valid existence. This clone is substantially in agreement with the reference, but a complete review of all prevailing variants is recommended prior to use. [More info](#)

**OTI Annotation:** This clone was engineered to express the complete ORF with an expression tag. Expression varies depending on the nature of the gene.

**Components:** The ORF clone is ion-exchange column purified and shipped in a 2D barcoded Matrix tube containing 10ug of transfection-ready, dried plasmid DNA (reconstitute with 100 ul of water).

**Reconstitution Method:**

1. Centrifuge at 5,000xg for 5min.
2. Carefully open the tube and add 100ul of sterile water to dissolve the DNA.
3. Close the tube and incubate for 10 minutes at room temperature.
4. Briefly vortex the tube and then do a quick spin (less than 5000xg) to concentrate the liquid at the bottom.
5. Store the suspended plasmid at -20°C. The DNA is stable for at least one year from date of shipping when stored at -20°C.

**RefSeq:** [NM\\_001276319.2](#)

**RefSeq Size:** 1915 bp

**RefSeq ORF:** 813 bp

**Locus ID:** 8996

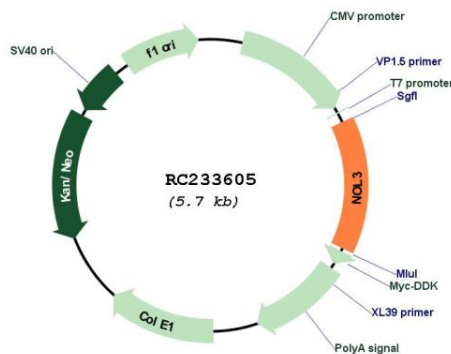
**UniProt ID:** [O60936](#)

**Cytogenetics:** 16q22.1

**MW:** 29.8 kDa

**Gene Summary:** This gene encodes an anti-apoptotic protein that has been shown to down-regulate the enzyme activities of caspase 2, caspase 8 and tumor protein p53. Multiple transcript variants encoding different isoforms have been found for this gene. [provided by RefSeq, Jun 2010]

**Product images:**



Circular map for RC233605