

Product datasheet for RC233589

TBC1D1 (NM_001253914) Human Tagged ORF Clone

Product data:

Product Type: Expression Plasmids
 Product Name: TBC1D1 (NM_001253914) Human Tagged ORF Clone
 Tag: Myc-DDK
 Symbol: TBC1D1
 Synonyms: TBC; TBC1
 Mammalian Cell Selection: Neomycin
 Vector: pCMV6-Entry (PS100001)
 E. coli Selection: Kanamycin (25 ug/mL)
 ORF Nucleotide Sequence: >RC233589 representing NM_001253914
 Red=Cloning site Blue=ORF Green=Tags(s)

TTTTGTAATACGACTCACTATAGGGCGGCCGGAATTCGTCGACTGGATCCGGTACCGAGGAGATCTGCC
 GCCCGCATCGCC

ATGAGTGAGGAAGAGGCGTTTAAAATGCTCAAGTTTCTGATGTTTGACATGGGGCTGCGGAAACAGTATC
 GGCCAGACATGATTATTTTACAGATCCAGATGTACCAGCTCTCGAGTTGCTTCATGATTACCACAGAGA
 CCTCTACAATCACCTGGAGGAGCAGGATCGGCCCCAGCCTCTACGCTGCCCTGTTCTCACCATG
 TTTGCCTCACAGTCCCCTGGGATTTCGTAGCCAGAGTCTTTGATATGATTTTTCTTCAGGGAACAGAGG
 TCATATTTAAAGTGGCTTAAAGTCTGTTGGGAAGCCATAAGCCCTTGATTCTGCAGCATGAAAACCTAGA
 AACCATAGTTGACTTTATAAAAAGCAGCTACCCAACCTTGGCTTGGTACAGATGAAAAAGACCATCAAT
 CAGGTATTTGAAATGGACATCGCTAAACAGTTACAAGCTTATGAAGTTGAGTACCAGCTCCTTCAAGAAG
 AACTTATCGATTCTCCTCTCAGTGACAACCAAGAATGGATAAATTAGAGAAAACCAACAGCAGCTT
 ACGCAAACAGAACCTTGACCTCCTTGAACAGTTGCAGGTGGCAAATGGTAGGATCCAAAGCCTTGAGGCC
 ACCATTGAGAAGCTCCTGAGCAGTGAGAGCAAGCTGAAGCAGGCCATGCTTACCTTAGAACTGGAGCGGT
 CGGCCCTGCTGCAGACGGTGGAGGAGCTGCGGCCGCGGAGCGCAGAGCCCAGCGACCGGGAGCCTGAGTG
 CACGCAGCCCCGAGCCCACGGGCGAC

ACGCGTACGCGGCCGCTCGAGCAGAAACTCATCTCAGAAGAGGATCTGGCAGCAAATGATATCCTGGATT
 ACAAGGATGACGACGATAAGGTTTAA



[View online »](#)

Protein Sequence: >RC233589 representing NM_001253914
Red=Cloning site Green=Tags(s)

MSEEEAFKMLKFLMFDMLRQYRPDMIILQIQMYQLSRLLDHYHRDLYNHLEEHEIGPSLYAAPWFLTM
 FASQFPLGFVARVFDMIFLQGTVEVIFKVALSLLGSHKPLILQHENLETIVDFIKSTLPLNLGLVQMEKTIN
 QVFEMDIAKQLQAYEVEYHVLQEELIDSSPLSDNQRMKLEKTNSLRKQNLDLLLEQLQVANGRIQSLEA
 TIEKLLSSESKLKQAMLTELEERSALLQTVEELRRRSAEPSDREPECTQPEPTGD

TRTRPLEQKLISEEDLAANDILDYKDDDDKV

Restriction Sites: SgfI-MluI

Cloning Scheme:

Cloning sites used for ORF Shuttling:



* The last codon before the Stop codon of the ORF

ACCN: NM_001253914

ORF Size: 795 bp

OTI Disclaimer: The molecular sequence of this clone aligns with the gene accession number as a point of reference only. However, individual transcript sequences of the same gene can differ through naturally occurring variations (e.g. polymorphisms), each with its own valid existence. This clone is substantially in agreement with the reference, but a complete review of all prevailing variants is recommended prior to use. [More info](#)

OTI Annotation: This clone was engineered to express the complete ORF with an expression tag. Expression varies depending on the nature of the gene.

Components: The ORF clone is ion-exchange column purified and shipped in a 2D barcoded Matrix tube containing 10ug of transfection-ready, dried plasmid DNA (reconstitute with 100 ul of water).

Reconstitution Method:

1. Centrifuge at 5,000xg for 5min.
2. Carefully open the tube and add 100ul of sterile water to dissolve the DNA.
3. Close the tube and incubate for 10 minutes at room temperature.
4. Briefly vortex the tube and then do a quick spin (less than 5000xg) to concentrate the liquid at the bottom.
5. Store the suspended plasmid at -20°C. The DNA is stable for at least one year from date of shipping when stored at -20°C.

RefSeq: [NM_001253914.1](#), [NP_001240843.1](#)

RefSeq Size: 2990 bp

RefSeq ORF: 798 bp

Locus ID: 23216

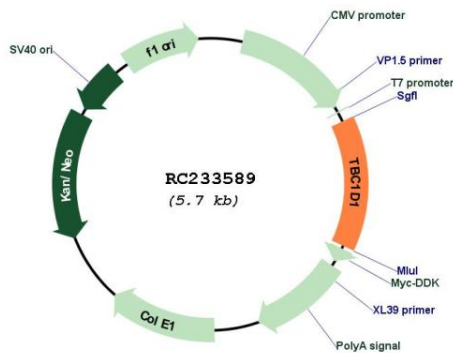
Cytogenetics: 4p14

Protein Families: Druggable Genome

MW: 31.3 kDa

Gene Summary: TBC1D1 is the founding member of a family of proteins sharing a 180- to 200-amino acid TBC domain presumed to have a role in regulating cell growth and differentiation. These proteins share significant homology with TRE2 (USP6; MIM 604334), yeast Bub2, and CDC16 (MIM 603461) (White et al., 2000 [PubMed 10965142]).[supplied by OMIM, Mar 2008]

Product images:



Circular map for RC233589