

## Product datasheet for **RC233588**

### **TBC1D1 (NM\_001253913) Human Tagged ORF Clone**

#### Product data:

**Product Type:** Expression Plasmids  
**Product Name:** TBC1D1 (NM\_001253913) Human Tagged ORF Clone  
**Tag:** Myc-DDK  
**Symbol:** TBC1D1  
**Synonyms:** TBC; TBC1  
**Mammalian Cell Selection:** Neomycin  
**Vector:** pCMV6-Entry (PS100001)  
**E. coli Selection:** Kanamycin (25 ug/mL)  
**ORF Nucleotide Sequence:** >RC233588 representing NM\_001253913  
Red=Cloning site Blue=ORF Green=Tags(s)

TTTTGTAATACGACTCACTATAGGGCGGCCGGAATTCGTCGACTGGATCCGGTACCGAGGAGATCTGCC  
 GCCCGGATCGCC

ATGAGTGAGGAAGAGGCGTTTAAAATGCTCAAGTTTCTGATGTTTGACATGGGGCTGCGGAAACAGTATC  
 GGCCAGACATGATTATTTTACAGATCCAGATGTACCAGCTCTCGAGTTGCTTCATGATTACCACAGAGA  
 CCTCTACAATCACCTGGAGGAGCAGGATCGGCCCCAGCCTCTACGCTGCCCCCTGGTTCTCACCATG  
 TTTGCCTCACAGTCCCCTGGGATTTCGTAGCCAGAGTCTTTGATATGATTTTTCTTCAGGGAACAGAGG  
 TCATATTTAAAGTGGCTTAAAGTCTGTTGGGAAGCCATAAGCCCTTGATTCTGCAGCATGAAAACCTAGA  
 AACCATAGTTGACTTTATAAAAAGCACGCTACCCAACCTTGGCTTGGTACAGATGAAAAAGACCATCAAT  
 CAGGTATTTGAAATGGACATCGCTAAACAGTTACAAGCTTATGAAGTTGAGTACCACGTCCTTCAAGAAG  
 AACTTATCGATTCTCCTCTCAGTGACAACCAAGAATGGATAAATTAGAGAAAACCAACAGCAGCTT  
 ACGCAAACAGAACCTTGACCTCCTTGAACAGTTGCAGGTGGCAAATGGTAGGATCCAAAGCCTTGAGGCC  
 ACCATTGAGAAGCTCCTGAGCAGTGAGAGCAAGCTGAAGCAGGCCATGCTTACCTTAGAACTGGAGCGGT  
 CGGCCCTGCTGCAGACGGTGGAGGAGCTGCGGCCGCGGAGCGCAGAGCCCAGCGACCGGGAGCCTGAGTG  
 CACGCAGCCCCGAGCCCACGGGCGAC

ACGCGTACGCGGCCGCTCGAGCAGAAACTCATCTCAGAAGAGGATCTGGCAGCAAATGATATCCTGGATT  
 ACAAGGATGACGACGATAAGGTTTAA



[View online »](#)

**Protein Sequence:** >RC233588 representing NM\_001253913  
 Red=Cloning site Green=Tags(s)

MSEEEAFKMLKFLMFDMLRQYRPDMIILQIQMYQLSRLLDHYHRDLYNHLEEHEIGPSLYAAPWFLTM  
 FASQFPLGFVARVFDMIIFLQGTVEVIFKVALSLLGSHKPLILQHENLETIVDFIKSTLPNLGLVQMEKTIN  
 QVFEMDIAKQLQAYEVEYHVLQEELIDSSPLSDNQRMKLEKTNSLRKQNLDLLEQLQVANGRIQSLEA  
 TIEKLLSSESKLKQAMLTELEERSALLQTVEELRRRSAEPSDREPECTQPEPTGD

TRTRPLEQKLISEEDLAANDILDYKDDDDKV

**Restriction Sites:** SgfI-MluI

**Cloning Scheme:**

Cloning sites used for ORF Shuttling:



\* The last codon before the Stop codon of the ORF

**ACCN:** NM\_001253913

**ORF Size:** 795 bp

**OTI Disclaimer:** The molecular sequence of this clone aligns with the gene accession number as a point of reference only. However, individual transcript sequences of the same gene can differ through naturally occurring variations (e.g. polymorphisms), each with its own valid existence. This clone is substantially in agreement with the reference, but a complete review of all prevailing variants is recommended prior to use. [More info](#)

**OTI Annotation:** This clone was engineered to express the complete ORF with an expression tag. Expression varies depending on the nature of the gene.

**Components:** The ORF clone is ion-exchange column purified and shipped in a 2D barcoded Matrix tube containing 10ug of transfection-ready, dried plasmid DNA (reconstitute with 100 ul of water).

**Reconstitution Method:**

1. Centrifuge at 5,000xg for 5min.
2. Carefully open the tube and add 100ul of sterile water to dissolve the DNA.
3. Close the tube and incubate for 10 minutes at room temperature.
4. Briefly vortex the tube and then do a quick spin (less than 5000xg) to concentrate the liquid at the bottom.
5. Store the suspended plasmid at -20°C. The DNA is stable for at least one year from date of shipping when stored at -20°C.

**RefSeq:** [NM\\_001253913.1](#), [NP\\_001240842.1](#)

**RefSeq Size:** 3344 bp

**RefSeq ORF:** 798 bp

**Locus ID:** 23216

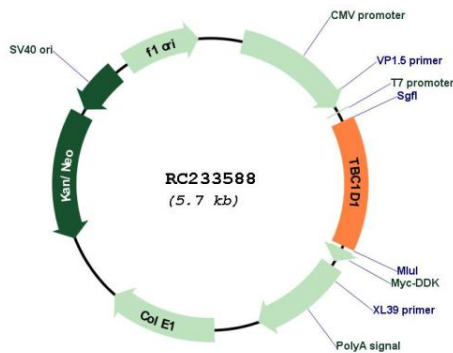
**Cytogenetics:** 4p14

**Protein Families:** Druggable Genome

**MW:** 31.3 kDa

**Gene Summary:** TBC1D1 is the founding member of a family of proteins sharing a 180- to 200-amino acid TBC domain presumed to have a role in regulating cell growth and differentiation. These proteins share significant homology with TRE2 (USP6; MIM 604334), yeast Bub2, and CDC16 (MIM 603461) (White et al., 2000 [PubMed 10965142]).[supplied by OMIM, Mar 2008]

### Product images:



Circular map for RC233588