

Product datasheet for **RC233561**

PGAP2 (NM_001256240) Human Tagged ORF Clone

Product data:

Product Type:	Expression Plasmids
Product Name:	PGAP2 (NM_001256240) Human Tagged ORF Clone
Tag:	Myc-DDK
Symbol:	PGAP2
Synonyms:	CWH43-N; FRAG1; HPMRS3; MRT17; MRT21
Mammalian Cell Selection:	Neomycin
Vector:	pCMV6-Entry (PS100001)
E. coli Selection:	Kanamycin (25 ug/mL)
ORF Nucleotide Sequence:	>RC233561 representing NM_001256240 Red=Cloning site Blue=ORF Green=Tags(s)

TTTTGTAATACGACTCACTATAGGGCGCCGGGAATTCGTCGACTGGATCCGGTACCGAGGAGATCTGCC
GCC**CGATCGCC**

ATGTACCAGGTCCCCTACTCCACTGGATCGGGATGGGACCCTGGTACGGCTCCGCTTCACCATGGTGGCCC
TGGTCACGGTCTGCTGTCCACTTGTGCGCTTCCTCTTCTGCATCCTCTGGTCCCTGCTCTTCCACTTCAA
GGAGACAACGGCCACACTGTGGGTGCCAATTACCTGCCCTCGGTGAGCTCAGCCATCGCGGGGAG
GTGCCCCAGCGCTACGTGTGGCTTTCTGCATCGGCCTGCACTCGGCGCCTCGCTTCTTGGTGGCCTTCG
CCTACTGGAACCACTACCTCAGCTGCACCTCCCGTGTCTCTGCTATCGCCCGCTCTGCCGCTCAACTT
CGGCCTCAATGTCGTGGAGAACCCTCGCGTTGCTAGTGCTCACTTATGTCTCCTCCTCCGAGGACTTCACC
ATCCACGAAAATGCTTTCATTGTGTTTCATTGCCTCATCCCTCGGGCAGATGCTCCTCACCTGCATTCTCT
GGCGGTTGACCAAGAAGCACACAGTAAGTCAGGAGGATCGCAAGTCTACAGCTGAAAACAGCGGCTCTT
CATCATCAACTTCATCTCCTTCTCTCGGCGCTGGCTGTCTACTTTTCGGCACAACATGTATTGTGAGGCT
GGAGTGTACACCATCTTTGCCATCCTGGAGTACACTGTTGTCTTAACCAACATGGCGTCCACATGACGG
CCTGGTGGGACTTCGGGAACAAGGAGCTGCTCATAACCTCTCAGCCTGAGGAAAAGCGATT

ACGCGTACGCGGCCGCTCGAGCAGAAACTCATCTCAGAAGAGGATCTGGCAGCAAATGATATCCTGGATT
ACAAGGATGACGACGATAAGGTTTAA



[View online »](#)

Protein Sequence: >RC233561 representing NM_001256240
 Red=Cloning site Green=Tags(s)

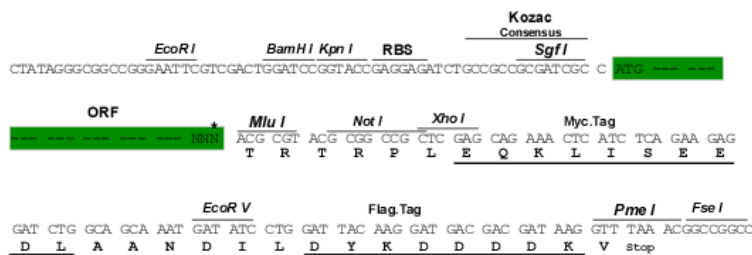
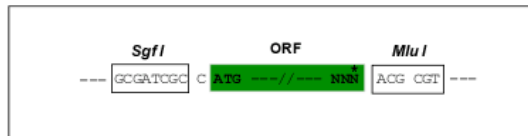
MYQVPLPLDRDGLVRLRFTMVALVTCCPLVAFVFCILWSLLFHFKETTATHCGVPNYLPSVSSAIGGE
 VPQRYVWRFCIGLHSAPRFLVAFAYWNHYLSCTSPCSCYRPLCRLNFGLNVVENLALLVLTYVSSSEDF
 IHENAFIVFIASSLGHMLLTICILWRLTKKHTVSQEDRKSYSWKQRLFIIINFISFFSALAVYFRHNMYCEA
 GYVITFAILEYTVVLTNMAFHMTAWWDFGNKELLITSQPEEKRF

TRTRPLEQKLISEEDLAANDILDYKDDDDKV

Restriction Sites: SgfI-MluI

Cloning Scheme:

Cloning sites used for ORF Shuttling:



* The last codon before the Stop codon of the ORF

ACCN: NM_001256240

ORF Size: 762 bp

OTI Disclaimer: The molecular sequence of this clone aligns with the gene accession number as a point of reference only. However, individual transcript sequences of the same gene can differ through naturally occurring variations (e.g. polymorphisms), each with its own valid existence. This clone is substantially in agreement with the reference, but a complete review of all prevailing variants is recommended prior to use. [More info](#)

OTI Annotation: This clone was engineered to express the complete ORF with an expression tag. Expression varies depending on the nature of the gene.

Components: The ORF clone is ion-exchange column purified and shipped in a 2D barcoded Matrix tube containing 10ug of transfection-ready, dried plasmid DNA (reconstitute with 100 ul of water).

Reconstitution Method:

1. Centrifuge at 5,000xg for 5min.
2. Carefully open the tube and add 100ul of sterile water to dissolve the DNA.
3. Close the tube and incubate for 10 minutes at room temperature.
4. Briefly vortex the tube and then do a quick spin (less than 5000xg) to concentrate the liquid at the bottom.
5. Store the suspended plasmid at -20°C. The DNA is stable for at least one year from date of shipping when stored at -20°C.

RefSeq: [NM_001256240.2](#)

RefSeq Size: 1818 bp

RefSeq ORF: 765 bp

Locus ID: 27315

UniProt ID: [Q9UHQ9](#)

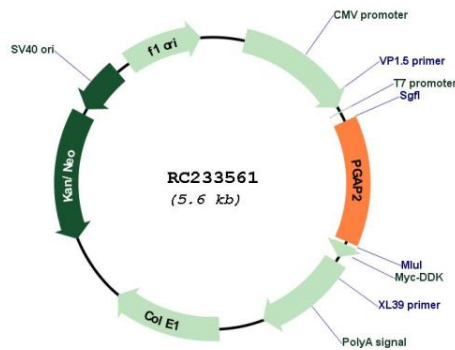
Cytogenetics: 11p15.4

Protein Families: Druggable Genome, Transmembrane

MW: 29.9 kDa

Gene Summary: The protein encoded by this gene plays a role in the maturation of glycosylphosphatidylinositol (GPI) anchors on GPI-anchored proteins. Mutations in this gene are associated with an autosomal recessive syndrome characterized by hyperphosphatasia and intellectual disability. [provided by RefSeq, Jul 2017]

Product images:



Circular map for RC233561