

Product datasheet for **RC233524**

PHOSPHO2 (NM_001199288) Human Tagged ORF Clone

Product data:

Product Type:	Expression Plasmids
Product Name:	PHOSPHO2 (NM_001199288) Human Tagged ORF Clone
Tag:	Myc-DDK
Symbol:	PHOSPHO2
Mammalian Cell Selection:	Neomycin
Vector:	pCMV6-Entry (PS100001)
E. coli Selection:	Kanamycin (25 ug/mL)
ORF Nucleotide Sequence:	>RC233524 ORF sequence Red=Cloning site Blue=ORF Green=Tags(s)

TTTTGTAATACGACTCACTATAGGGCGGCCGGAATTCGTCGACTGGATCCGGTACCGAGGAGATCTGCC
GCC**CGATCGCC**

ATGAAAATTTTGCTAGTTTTGACTTTGACAATACAATCATAGATGACAATAGTGACACTTGGATTGTAC
AATGTGCTCCCAACAAAAGCTTCTATTGAACTACGTGATTCTTATCGAAAAGGATTTGGACAGAATT
TATGGGCAGAGTCTTTAAGTATTTGGGAGATAAGGGTGTAAAGAGAACATGAAATGAAAAGAGCAGTGACA
TCATTGCCTTTCCTCCAGGGATGGTGGAACTCTCACTTTATAAGAAAGAATAAGGATAAATTTGACT
GCATTATTATTTAGATTCAAATTCGGTCTTCATAGATTGGTTTTAGAAGCTGCCAGTTTTTCATGACAT
ATTTGATAAAGTGTTTACAAATCCAGCAGCTTTTAATAGCAATGGTCATCTCACTGTTGAAAATTATCAT
ACTCATTCTTGCAATAGATGCCCAAAGAATCTTTGCAAAAAGGTAGTTTTGATAGAATTTGTAGATAAAC
AGTTACAACAGGGAGTGAATTATACACAAATTGTTTATTTGGTGATGGTGGAAATGATGCTGTCCAGT
CACCTTTTTAAAGAATGATGATGTTGCCATGCCACGAAAGGATATACCTTACAGAAAACCTTTCCAGA
ATGTCTCAAAATCTTGAGCCTATGGAATATTCTGTTGTAGTTGGTCTCAGGTGTTGATATAATTTCTC
ATTTACAATTTCTAATAAAGGAT

ACGCGTACGCGGCCGCTCGAGCAGAAACTCATCTCAGAAGAGGATCTGGCAGCAAATGATATCTGGATT
ACAAGGATGACGACGATAAGGTTTAA



[View online »](#)

Protein Sequence: >RC233524 protein sequence
 Red=Cloning site Green=Tags(s)

MKILLVDFDNTIIDDNSDTWIVQCAPNKKLPIELRDSYRKGFWTEFMGRVFKYLGDKGVREHEMKRAVT
 SLPFTPGMVELFNFIRKNKDKFDCIIISDSNSVFDWVLEAASFHDIFDKVFTNPAAFNSNGHLTVENYH
 THSCNRCPKNLCKKVVLIEFVDKQLQQGVNYTQIVYIGDGGNDVCPVTFLLKNDVAMPKGYTLQKTLRSR
 MSQNLEPMEYSVVVWSSGVDIIISHLQFLIKD

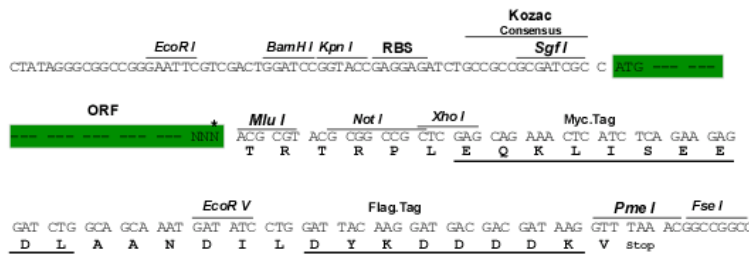
TRTRPLEQKLISEEDLAANDILDYKDDDDKV

Chromatograms: https://cdn.origene.com/chromatograms/ja1490_a12.zip

Restriction Sites: SgfI-MluI

Cloning Scheme:

Cloning sites used for ORF Shuttling:



* The last codon before the Stop codon of the ORF

ACCN: NM_001199288

ORF Size: 723 bp

OTI Disclaimer: The molecular sequence of this clone aligns with the gene accession number as a point of reference only. However, individual transcript sequences of the same gene can differ through naturally occurring variations (e.g. polymorphisms), each with its own valid existence. This clone is substantially in agreement with the reference, but a complete review of all prevailing variants is recommended prior to use. [More info](#)

OTI Annotation: This clone was engineered to express the complete ORF with an expression tag. Expression varies depending on the nature of the gene.

Components: The ORF clone is ion-exchange column purified and shipped in a 2D barcoded Matrix tube containing 10ug of transfection-ready, dried plasmid DNA (reconstitute with 100 ul of water).

Reconstitution Method:

1. Centrifuge at 5,000xg for 5min.
2. Carefully open the tube and add 100ul of sterile water to dissolve the DNA.
3. Close the tube and incubate for 10 minutes at room temperature.
4. Briefly vortex the tube and then do a quick spin (less than 5000xg) to concentrate the liquid at the bottom.
5. Store the suspended plasmid at -20°C. The DNA is stable for at least one year from date of shipping when stored at -20°C.

RefSeq: [NM_001199288.1](#), [NP_001186217.1](#)

RefSeq Size: 1068 bp

RefSeq ORF: 726 bp

Locus ID: 493911

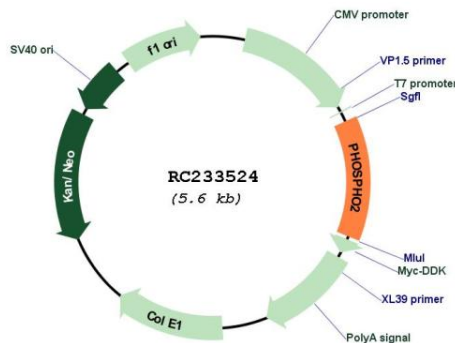
UniProt ID: [Q8TCD6](#)

Cytogenetics: 2q31.1

MW: 27.8 kDa

Gene Summary: Phosphatase that has high activity toward pyridoxal 5'-phosphate (PLP). Also active at much lower level toward pyrophosphate, phosphoethanolamine (PEA), phosphocholine (PCho), phospho-l-tyrosine, fructose-6-phosphate, p-nitrophenyl phosphate, and h-glycerophosphate. [UniProtKB/Swiss-Prot Function]

Product images:



Circular map for RC233524