

## Product datasheet for **RC233519**

### NPL (NM\_001200051) Human Tagged ORF Clone

#### Product data:

**Product Type:** Expression Plasmids  
**Product Name:** NPL (NM\_001200051) Human Tagged ORF Clone  
**Tag:** Myc-DDK  
**Symbol:** NPL  
**Synonyms:** C1orf13; C112; NAL; NPL1  
**Mammalian Cell Selection:** Neomycin  
**Vector:** pCMV6-Entry (PS100001)  
**E. coli Selection:** Kanamycin (25 ug/mL)  
**ORF Nucleotide Sequence:** >RC233519 representing NM\_001200051  
**Red=Cloning site Blue=ORF Green=Tags(s)**

TTTTGTAATACGACTCACTATAGGGCGCCGGGAATTCGTCGACTGGATCCGGTACCGAGGAGATCTGCC  
GCC**CGATCGCC**

ATGGCCTTCCCAAAGAAGAACTTCAGGGTCTTGTGGCTGCAACCATCACGCCAATGACTGAGAATGGAG  
AAATCAACTTTTCAGTAATTGGTCAGTATGTGGATTATCTTGTGAAAGAACAGGGAGTGAAGAACATTTT  
TGTGAATGGCACAACAGGAGAAGGCCTGTCCCTGAGCGTCTCAGAGCGTCGCCAGGTTGCAGAGGAGTGG  
GTGACAAAAGGAAGGACAAGCTGGATCAGGTGATAATTCACGTAGGAGCACTGAGCTTGAAGGAGTCAC  
AGGAAGTGGCCCAACATGCAGCAGAAATAGGAGCTGATGGCATCGCTGTCATTGCACCGTTCTTCTCAA  
GCCATGGACCAAAGATATCCTGATTAATTTCTAAAGGAAGTGGCTGCTGCCGCCCTGCCCTGCCATTT  
TATTACTATCACATTCCTGCCTTGACAGGGTAAAGATTTCGTGCTGAGGAGTTGTTGGATGGGATTCTGG  
ATAAGATCCCCACCTTCCAAGGGCTGAAATTCAGTGATACAGATCTTTAGACTTCGGGCAATGTGTTGA  
TCAGAATCGCCAGCAACAGTTTGCTTCTTTTGGGGTGGATGAGTTTTGTATCCAGAGATTTATCAAC  
TTTGTGTCAAACTAGAAAACCTAAAACCTCAAAGTTTCAAAGAACCAAAGGACTTTCCTCTGGGCCACA  
CAAACCTCCCCTTCTCCAC

**ACGCGT**ACGCGGCCGCTCGAGCAGAACTCATCTCAGAAGAGGATCTGGCAGCAAATGATATCCTGGATT  
ACAAGGATGACGACGATAAGGTTTAA



[View online »](#)

**Protein Sequence:** >RC233519 representing NM\_001200051  
 Red=Cloning site Green=Tags(s)

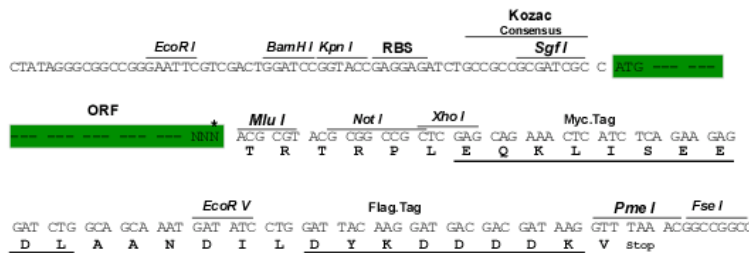
MAFPKKKLQGLVAATITPMTENGEINFSVIGQYVDYLVKEQGVKNIFVNGTTGEGLSLSVSERRQVAEEW  
 VTKGDKLDQVIHVGALSLKESQELAQAHAEEIGADGIAVIAPFFLKPWTKDILINFLKEVAAAAPALPF  
 YYYHIPALTGVKIRAEELLDGILDKIPTFQGLKFSDTDLLDFGQCVDQNRQQQFAFLFGVDEFICIQRFIN  
 FVVKLENSKLVSKNQRTLPLGTTNFPFLH

TRTRPLEQKLISEEDLAANDILDYKDDDDKV

**Restriction Sites:** Sgfl-MluI

**Cloning Scheme:**

Cloning sites used for ORF Shuttling:



\* The last codon before the Stop codon of the ORF

**ACCN:** NM\_001200051

**ORF Size:** 720 bp

**OTI Disclaimer:** The molecular sequence of this clone aligns with the gene accession number as a point of reference only. However, individual transcript sequences of the same gene can differ through naturally occurring variations (e.g. polymorphisms), each with its own valid existence. This clone is substantially in agreement with the reference, but a complete review of all prevailing variants is recommended prior to use. [More info](#)

**OTI Annotation:** This clone was engineered to express the complete ORF with an expression tag. Expression varies depending on the nature of the gene.

**Components:** The ORF clone is ion-exchange column purified and shipped in a 2D barcoded Matrix tube containing 10ug of transfection-ready, dried plasmid DNA (reconstitute with 100 ul of water).

**Reconstitution Method:**

1. Centrifuge at 5,000xg for 5min.
2. Carefully open the tube and add 100ul of sterile water to dissolve the DNA.
3. Close the tube and incubate for 10 minutes at room temperature.
4. Briefly vortex the tube and then do a quick spin (less than 5000xg) to concentrate the liquid at the bottom.
5. Store the suspended plasmid at -20°C. The DNA is stable for at least one year from date of shipping when stored at -20°C.

**RefSeq:** [NM\\_001200051.2](#)

**RefSeq Size:** 1856 bp

**RefSeq ORF:** 723 bp

**Locus ID:** 80896

**UniProt ID:** [Q9BXD5](#)

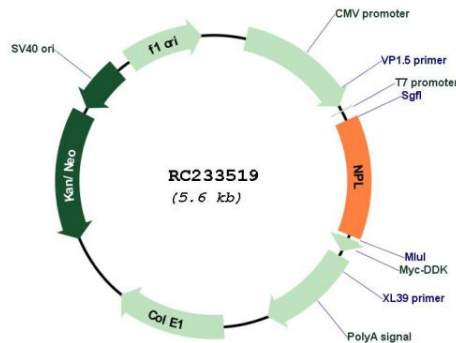
**Cytogenetics:** 1q25.3

**Protein Pathways:** Amino sugar and nucleotide sugar metabolism

**MW:** 27.2 kDa

**Gene Summary:** This gene encodes a member of the N-acetylneuraminase lyase sub-family of (beta/alpha)(8)-barrel enzymes. N-acetylneuraminase lyases regulate cellular concentrations of N-acetylneuraminic acid (sialic acid) by mediating the reversible conversion of sialic acid into N-acetylmannosamine and pyruvate. A pseudogene of this gene is located on the short arm of chromosome 2. Alternatively spliced transcript variants encoding multiple isoforms have been observed for this gene. [provided by RefSeq, Jan 2011]

### Product images:



Circular map for RC233519