

Product datasheet for **RC233514**

PAPOLA (NM_001252007) Human Tagged ORF Clone

Product data:

Product Type:	Expression Plasmids
Product Name:	PAPOLA (NM_001252007) Human Tagged ORF Clone
Tag:	Myc-DDK
Symbol:	PAPOLA
Synonyms:	PAP; PAP-alpha
Mammalian Cell Selection:	Neomycin
Vector:	pCMV6-Entry (PS100001)
E. coli Selection:	Kanamycin (25 ug/mL)
ORF Nucleotide Sequence:	>RC233514 representing NM_001252007 Red=Cloning site Blue=ORF Green=Tags(s)

TTTTGTAATACGACTCACTATAGGGCGCCGGAATTCGTCGACTGGATCCGGTACCGAGGAGATCTGCC
GCC**CGATCGCC**

ATGCCGTTTCCAGTTACAACACAGGGATCACAACAAACACAACCGCCACAGAAGCACTATGGCATTACTT
CTCCTATCAGCTTAGCAGCCCCAAGGAGACTGACTGCGTACTTACACAGAACTAATTGAGACATTGAA
ACCCTTTGGGTTTTTTGAAGAGGAAGAGGAAGTGCAGCGCAGGATTTTAATTTTGGGAAACTAAATAAC
CTGGTAAAAGAGTGGATACGAGAAATCAGTGAAGCAAGAATCTCCACAATCTGTAATTGAAAATGTTG
GAGGAAAAATTTTACATTTGGATCTTACAGATTAGGAGTGCATACAAAAGGTGCTGATATTGATGCGTT
GTGTGTTGCACCAAGACATGTTGATCGAAGTACTTTTTACCTCATTCTATGATAAGTTGAAATTACAG
GAAGAAGTAAAAGATTTAAGAGCTGTTGAAGAGGCATTCTACCAGTTATTAACCTGTTTTGATGGGA
TAGAGATTGATATTTGTTGCAAGATTAGCACTGCAGACAATTCCTGAAGATTTGGATCTACGAGATGA
CAGTCTGCTAAAAAATTTAGATAAAGATGTATAAGAAGTCTTAACGGTATGAGAAAGCCTACTTCTTT
TGTGACTTCAGTTTTTGTGAGATATTAGTTGTTTTTACACAAGTTTTGTATTGAAGCTTTTATAGCTA
TATTGTTAACACAG

ACGCGTACGCGGCCGCTCGAGCAGAACTCATCTCAGAAGAGGATCTGGCAGCAAATGATATCCTGGATT
ACAAGGATGACGACGATAAGGTTTAA



[View online »](#)

Protein Sequence: >RC233514 representing NM_001252007
 Red=Cloning site Green=Tags(s)

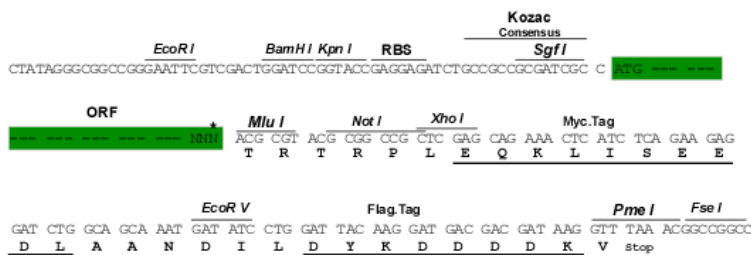
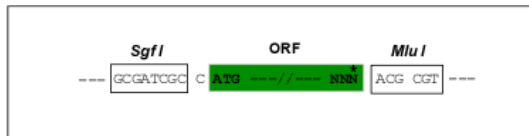
MPFPVTTQGSQQTQPQKHYGITSPIISLAAPKETDCVL TQKLIETLKPFGVFEEEEELQRRILILGKLNN
 LVKEWIREISESKNLPQSVIENVGGKIFTFGSYRLGVHTKGADIDALCVAPRHVDRSDFFTSFYDKLKLQ
 EEVKDLRAVEEAFVPVIKLCFDGIEIDILFARLALQTIPEDLDLRDSSLKLNLDIRCIRSLNGMRKPTSF
 CVLQFLSDISCFYTSFVLKLFIAILLTQ

TRTRPLEQKLISEEDLAANDILDYKDDDDKV

Restriction Sites: SgfI-MluI

Cloning Scheme:

Cloning sites used for ORF Shuttling:



* The last codon before the Stop codon of the ORF

ACCN: NM_001252007

ORF Size: 714 bp

OTI Disclaimer: The molecular sequence of this clone aligns with the gene accession number as a point of reference only. However, individual transcript sequences of the same gene can differ through naturally occurring variations (e.g. polymorphisms), each with its own valid existence. This clone is substantially in agreement with the reference, but a complete review of all prevailing variants is recommended prior to use. [More info](#)

OTI Annotation: This clone was engineered to express the complete ORF with an expression tag. Expression varies depending on the nature of the gene.

Components: The ORF clone is ion-exchange column purified and shipped in a 2D barcoded Matrix tube containing 10ug of transfection-ready, dried plasmid DNA (reconstitute with 100 ul of water).

Reconstitution Method:

1. Centrifuge at 5,000xg for 5min.
2. Carefully open the tube and add 100ul of sterile water to dissolve the DNA.
3. Close the tube and incubate for 10 minutes at room temperature.
4. Briefly vortex the tube and then do a quick spin (less than 5000xg) to concentrate the liquid at the bottom.
5. Store the suspended plasmid at -20°C. The DNA is stable for at least one year from date of shipping when stored at -20°C.

RefSeq: [NM_001252007.1](#), [NP_001238936.1](#)

RefSeq Size: 4847 bp

RefSeq ORF: 717 bp

Locus ID: 10914

UniProt ID: [P51003](#)

Cytogenetics: 14q32.2

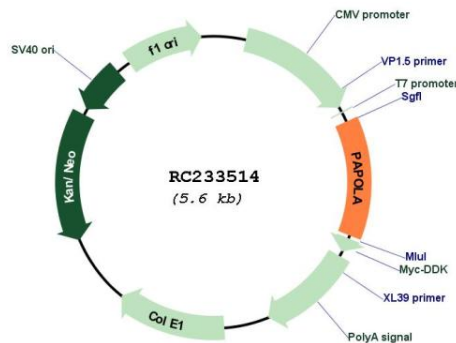
Protein Families: Transcription Factors

Protein Pathways: RNA degradation

MW: 27.5 kDa

Gene Summary: The protein encoded by this gene belongs to the poly(A) polymerase family. It is required for the addition of adenosine residues for the creation of the 3'-poly(A) tail of mRNAs. Alternatively spliced transcript variants encoding different isoforms have been found for this gene. [provided by RefSeq, Oct 2011]

Product images:



Circular map for RC233514