

## Product datasheet for RC233504

### SHISA5 (NM\_001272065) Human Tagged ORF Clone

#### Product data:

Product Type:	Expression Plasmids
Product Name:	SHISA5 (NM_001272065) Human Tagged ORF Clone
Tag:	Myc-DDK
Symbol:	SHISA5
Synonyms:	SCOTIN
Mammalian Cell Selection:	Neomycin
Vector:	pCMV6-Entry (PS100001)
E. coli Selection:	Kanamycin (25 ug/mL)
ORF Nucleotide Sequence:	>RC233504 representing NM_001272065 Red=Cloning site Blue=ORF Green=Tags(s)

TTTTGTAATACGACTCACTATAGGGCGCCGGGAATTCGTCGACTGGATCCGGTACCGAGGAGATCTGCC  
GCC**CGATCGCC**

ATGACTGCGCCGGTCCCCGCGCCGGATCCTGTTGCCGTTGCTGTTGCTGCTGCTGCTAACGCCGCTC  
CGGGTGCACGTGGTGAGGTGTGTATGGCTTCCCGTGGACTCAGCCTTCCCGAGTCTGTCCAGATTT  
CTGCTGTGGTACCTGTGATGACCAATACTGCTGCTCTGACGTGCTGAAGAAATTTGTGTGGAGCGAGGAA  
AGCGTGCCTGCCAGTGTAGAGCCGGTGGAGCAGCTGGGCTCGGCGCTGAGGTTTCGCCCTGGCTACAACG  
ACCCCATGTCAGGGTTCGGAGCGACCTTGCCGTTGGCCTGACCATCTTTGTGCTGTCTGTCGCTACTAT  
CATCATCTGCTTACCTGCTCCTGCTGCTGCCTTTACAAGACGTGCCCGCCGACCAGTCCGGTTGTCAAC  
ACCACCACATCCACCACTGTGGTGCATGCCCTTATCCTCAGCCTCCAAGTGTGCCGCCAGCTACCCTG  
GACCAAGCTACCAGGGCTACCACACCATGCCGCTCAGCCAGGGATGCCAGCAGCACCTACCCAATGCA  
GTACCCACCACCTTACCCAGCCAGCCCATGGGCCACCGGCTACCACGAGACCCTGGCTGGAGGAGCA  
GCCGCGCCCTACCCGCCAGCCAGCCTCCTTACAACCCGGCTACATGGATGCCCGAAGGCGGCCCTC

**ACGCGT**ACGCGGCGCTCGAGCAGAACTCATCTCAGAAGAGGATCTGGCAGCAAATGATATCTGGATT  
ACAAGGATGACGACGATAAGGTTTAA



[View online »](#)

**Protein Sequence:** >RC233504 representing NM\_001272065  
Red=Cloning site Green=Tags(s)

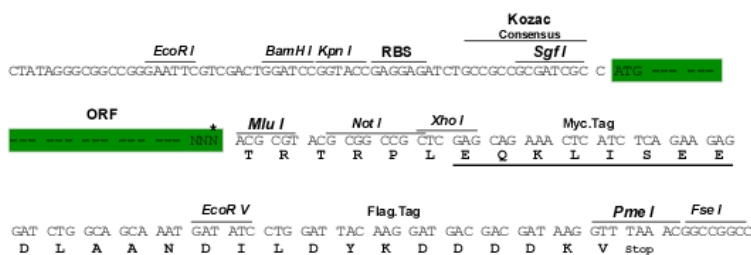
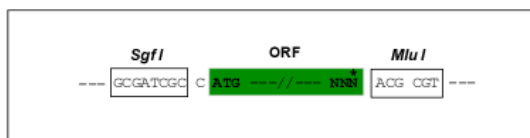
MTAPVPAPRILLPLLLLLLLTPPPGARGEVCMASRGLSLFPESCPDFCCGTCDDQYCCSDVLKKFVWSEE  
 SVPASVEPVEQLGSALRFRPGYNDPMSGFGATLAVGLTIFVLSVVTIIICFTCSCCCLYKTCRRPRPVVT  
 TTTSTTVHAPYPQPPSVPPSYGPGSYQGYHTMPPQPQGMFAAPYPMQYPPPPYPAQPMGPPAYHETLAGGA  
 AAPYPASQPPYNPAYMDAPKAAL

TRTRPLEQKLISEEDLAANDILDYKDDDDKV

**Restriction Sites:** Sgfl-MluI

**Cloning Scheme:**

Cloning sites used for ORF Shuttling:



\* The last codon before the Stop codon of the ORF

**ACCN:** NM\_001272065

**ORF Size:** 699 bp

**OTI Disclaimer:** The molecular sequence of this clone aligns with the gene accession number as a point of reference only. However, individual transcript sequences of the same gene can differ through naturally occurring variations (e.g. polymorphisms), each with its own valid existence. This clone is substantially in agreement with the reference, but a complete review of all prevailing variants is recommended prior to use. [More info](#)

**OTI Annotation:** This clone was engineered to express the complete ORF with an expression tag. Expression varies depending on the nature of the gene.

**Components:** The ORF clone is ion-exchange column purified and shipped in a 2D barcoded Matrix tube containing 10ug of transfection-ready, dried plasmid DNA (reconstitute with 100 ul of water).

**Reconstitution Method:**

1. Centrifuge at 5,000xg for 5min.
2. Carefully open the tube and add 100ul of sterile water to dissolve the DNA.
3. Close the tube and incubate for 10 minutes at room temperature.
4. Briefly vortex the tube and then do a quick spin (less than 5000xg) to concentrate the liquid at the bottom.
5. Store the suspended plasmid at -20°C. The DNA is stable for at least one year from date of shipping when stored at -20°C.

**RefSeq:** [NM\\_001272065.1](#), [NP\\_001258994.1](#)

**RefSeq Size:** 2166 bp

**RefSeq ORF:** 702 bp

**Locus ID:** 51246

**UniProt ID:** [Q8N114](#)

**Cytogenetics:** 3p21.31

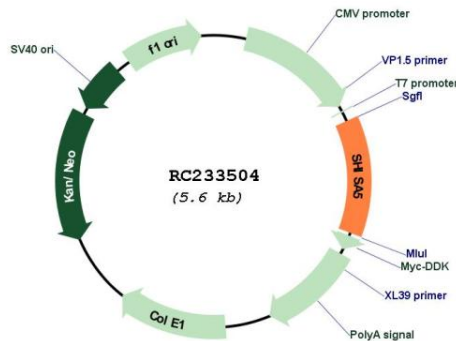
**Protein Families:** Transmembrane

**Protein Pathways:** p53 signaling pathway

**MW:** 25.3 kDa

**Gene Summary:** This gene encodes a member of the shisa family. The encoded protein is localized to the endoplasmic reticulum, and together with p53 induces apoptosis in a caspase-dependent manner. Alternative splicing results in multiple transcript variants. Related pseudogenes of this gene are found on chromosome X. [provided by RefSeq, Apr 2016]

**Product images:**



Circular map for RC233504