

Product datasheet for **RC233470**

IST1 (NM_001270979) Human Tagged ORF Clone

Product data:

Product Type: Expression Plasmids
Product Name: IST1 (NM_001270979) Human Tagged ORF Clone
Tag: Myc-DDK
Symbol: IST1
Synonyms: CHMP8; OLC1
Mammalian Cell Selection: Neomycin
Vector: pCMV6-Entry (PS100001)
E. coli Selection: Kanamycin (25 ug/mL)
ORF Nucleotide Sequence: >RC233470 representing NM_001270979
Red=Cloning site Blue=ORF Green=Tags(s)

TTTTGTAATACGACTCACTATAGGGCGCCGGGAATTCGTCGACTGGATCCGGTACCGAGGAGATCTGCC
GCC**CGATCGCC**

ATGCACAAGCTGAGTGTGGAAGCCCCACCCAAAATCCTGGTGGAGAGATACCTGATTGAAATTGCAAAGA
ATTACAACGTACCCTATGAACCTGACTCTGTGGTCATGGCAGAAGCTCCTCCTGGGGTAGAGACAGATCT
TATTGATGTTGGATTACAGATGATGTGAAGAAAGGAGGCCCTGGAAGAGGAGGGAGTGGTGGCTTCACA
GCACCAGTTGGTGGACCTGATGGAACGGTGCCAATGCCCATGCCATGCCATGCCTATGCCATCTGCAA
ATACGCCCTTCTCATATCCACTGCCAAAGGGACCATCAGATTTCAATGGACTGCCAATGGGGACTTATCA
GGCCTTCCCAAATATTCATCCACCTCAGATACCAGCAACTCCCCATCGTATGAATCTGTAGATGACATT
AATGCTGATAAGAATATCTTCTGACAGATTGTTGGTCTGGACCCAAGCCAGAAGCCTCTGCAAAGC
TTCTTCCAGACCTGCAGATAACTATGACAACCTTGTCTACCAGAGTTGCCATCTGTGCCAGACACACT
ACCAACTGCATCTGCTGGTGCCAGCACCTCAGCATCTGAAGACATTGACTTTGATGATCTTCCCGGAGG
TTTGAAGAGCTGAAAAAGAAAACA

ACGCGTACGCGGGCCGCTCGAGCAGAAACTCATCTCAGAAGAGGATCTGGCAGCAAATGATATCTGGATT
ACAAGGATGACGACGATAAGGTTTAA



[View online »](#)

Protein Sequence: >RC233470 representing NM_001270979
Red=Cloning site Green=Tags(s)

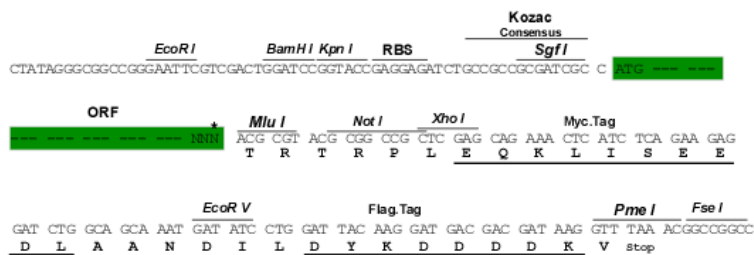
MHKL SVEAPPKILVERYLIEIAKNYNVPYEPDSVVM AEAPPGVETDLIDVGF TDDVKKGGPGRGGSGGFT
 APVGGPDGTVPMPMPMPMPMPMPMP S ANTPFSYPLPKGPSDFNGLPMGTYQAFPNIHPPQIPATPPSYESVDDI
 NADKNISSAQIVGPGPKPEASAKLPSRPADNYDNFVLP ELPSPVDTLPTASAGASTASEDIDFDDL SRR
 FEELKKKT

TRTRPLEQKLISEEDLAANDILDYKDDDDKV

Restriction Sites: Sgfl-MluI

Cloning Scheme:

Cloning sites used for ORF Shuttling:



* The last codon before the Stop codon of the ORF

ACCN: NM_001270979

ORF Size: 654 bp

OTI Disclaimer: The molecular sequence of this clone aligns with the gene accession number as a point of reference only. However, individual transcript sequences of the same gene can differ through naturally occurring variations (e.g. polymorphisms), each with its own valid existence. This clone is substantially in agreement with the reference, but a complete review of all prevailing variants is recommended prior to use. [More info](#)

OTI Annotation: This clone was engineered to express the complete ORF with an expression tag. Expression varies depending on the nature of the gene.

Components: The ORF clone is ion-exchange column purified and shipped in a 2D barcoded Matrix tube containing 10ug of transfection-ready, dried plasmid DNA (reconstitute with 100 ul of water).

Reconstitution Method:

1. Centrifuge at 5,000xg for 5min.
2. Carefully open the tube and add 100ul of sterile water to dissolve the DNA.
3. Close the tube and incubate for 10 minutes at room temperature.
4. Briefly vortex the tube and then do a quick spin (less than 5000xg) to concentrate the liquid at the bottom.
5. Store the suspended plasmid at -20°C. The DNA is stable for at least one year from date of shipping when stored at -20°C.

RefSeq: [NM_001270979.1](#), [NP_001257908.1](#)

RefSeq Size: 3583 bp

RefSeq ORF: 657 bp

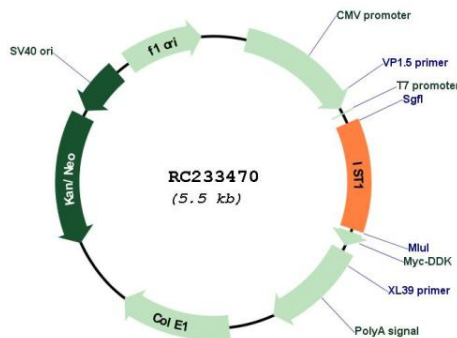
Locus ID: 9798

Cytogenetics: 16q22.2

MW: 23.5 kDa

Gene Summary: This gene encodes a protein with MIT-interacting motifs that interacts with components of endosomal sorting complexes required for transport (ESCRT). ESCRT functions in vesicle budding, such as that which occurs during membrane abscission in cytokinesis. There is a pseudogene for this gene on chromosome 19. Alternatively spliced transcript variants encoding multiple isoforms have been observed for this gene. [provided by RefSeq, Aug 2012]

Product images:



Circular map for RC233470