

## Product datasheet for RC233346

### LIM domain only 3 (LMO3) (NM\_001243613) Human Tagged ORF Clone

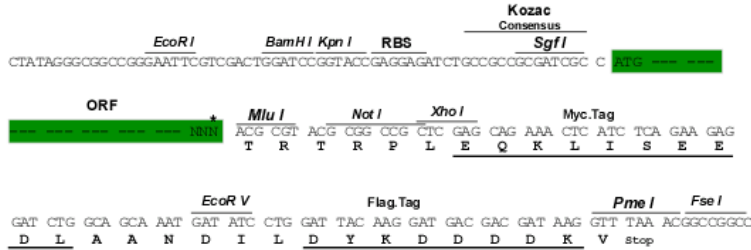
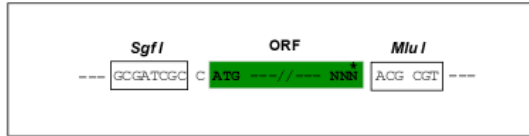
#### Product data:

Product Type:	Expression Plasmids
Product Name:	LIM domain only 3 (LMO3) (NM_001243613) Human Tagged ORF Clone
Tag:	Myc-DDK
Symbol:	LIM domain only 3
Synonyms:	RBTN3; RBTNL2; Rhom-3; RHOM3
Mammalian Cell Selection:	Neomycin
Vector:	pCMV6-Entry (PS100001)
E. coli Selection:	Kanamycin (25 ug/mL)
ORF Nucleotide Sequence:	<p>&gt;RC233346 representing NM_001243613 Red=Cloning site Blue=ORF Green=Tags(s)</p> <p>TTTTGTAATACGACTCACTATAGGGCGGCCGGAATTCGTCGACTGGATCCGGTACCGAGGAGATCTGCCGCCCGATCGCC</p> <p>ATGCTCTCAGTCCAGCCAGACACCAAGCCGAAAGGTTGTGCTGGCTGCAACCGAAAGATCAAGGACCGGTATCTTCTAAAGGCACTGGACAAATACTGGCATGAAGACTGCCTGAAGTGTGCCTGCTGTGACTGTCGCTGGGAGAGCATTGAAGAGGTGGATCTATACATACATGCTGCACATACAGAGATTGGAATCTGTGTAACCTTAGAATGGCATTACCTTTTGTCACTATTGACTTTAGCCAACAAATCACCATAGCTGGCTCTTTGTGTAACGGGAACTGCGCTGCCTGTAGTAAGCTCATCCCTGCCTTTGAGATGGTGTGCGTCCCAAGGACAATGTTTACCACCTGGACTGCTTTGCATGTCAGCTTTGTAATCAGAGATTTTGTGTTGGAGACAAATTTTCTAAAGAATAACATGATCCTTTGCCAGACGGACTACGAGGAAGGTTAATGAAAGAAGTTATGCACCCAGGTTCCG</p> <p>ACGCGTACGCGGCCGCTCGAGCAGAACTCATCTCAGAAGAGGATCTGGCAGCAATGATATCCTGGATTACAAGGATGACGACGATAAGGTTTAA</p>
Protein Sequence:	<p>&gt;RC233346 representing NM_001243613 Red=Cloning site Green=Tags(s)</p> <p>MLSVQPDTKPKGCAGCNRIKDRYLLKALDKYWHEDCLKACCDRLGEHLKRCGSIYIHAHAHEIGICVTLEWPLPFVIIDFSQQITIAWLFVGTGNCAACSKLIPAFEMVMRAKDNVYHLDFACQLCNQRFVGDKFLKNNMILCQTDYEEGLMKEGYAPQVR</p> <p>TRTRPLEQKLISEEDLAANDILDYKDDDDKV</p>
Restriction Sites:	Sgfl-MluI



Cloning Scheme:

Cloning sites used for ORF Shuttling:



\* The last codon before the Stop codon of the ORF

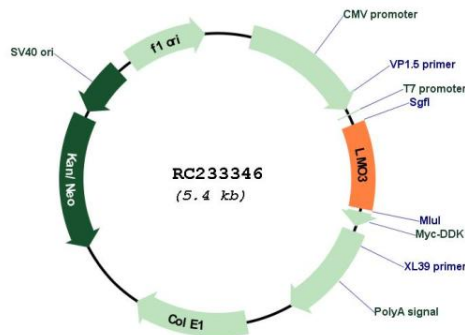
- ACCN: NM\_001243613
- ORF Size: 501 bp
- OTI Disclaimer: The molecular sequence of this clone aligns with the gene accession number as a point of reference only. However, individual transcript sequences of the same gene can differ through naturally occurring variations (e.g. polymorphisms), each with its own valid existence. This clone is substantially in agreement with the reference, but a complete review of all prevailing variants is recommended prior to use. [More info](#)
- OTI Annotation: This clone was engineered to express the complete ORF with an expression tag. Expression varies depending on the nature of the gene.
- Components: The ORF clone is ion-exchange column purified and shipped in a 2D barcoded Matrix tube containing 10ug of transfection-ready, dried plasmid DNA (reconstitute with 100 ul of water).
- Reconstitution Method:
  1. Centrifuge at 5,000xg for 5min.
  2. Carefully open the tube and add 100ul of sterile water to dissolve the DNA.
  3. Close the tube and incubate for 10 minutes at room temperature.
  4. Briefly vortex the tube and then do a quick spin (less than 5000xg) to concentrate the liquid at the bottom.
  5. Store the suspended plasmid at -20°C. The DNA is stable for at least one year from date of shipping when stored at -20°C.
- RefSeq: [NM\\_001243613.1](#), [NP\\_001230542.1](#)
- RefSeq Size: 3596 bp
- RefSeq ORF: 504 bp
- Locus ID: 55885
- UniProt ID: [Q8TAP4](#)
- Cytogenetics: 12p12.3

**Protein Families:** Transcription Factors

**MW:** 19.5 kDa

**Gene Summary:** The protein encoded by this gene belongs to the rhombotin family of cysteine-rich LIM domain oncogenes. This gene is predominantly expressed in the brain. Related family members, LMO1 and LMO2 on chromosome 11, have been reported to be involved in chromosomal translocations in T-cell leukemia. Many alternatively spliced transcript variants have been found for this gene. [provided by RefSeq, Aug 2011]

**Product images:**



Circular map for RC233346