

## Product datasheet for **RC233183**

### CTNND1 (NM\_001206885) Human Tagged ORF Clone

#### Product data:

Product Type:	Expression Plasmids
Product Name:	CTNND1 (NM_001206885) Human Tagged ORF Clone
Tag:	Myc-DDK
Symbol:	CTNND1
Synonyms:	BCDS2; CAS; CTNND; p120; p120(CAS); p120(CTN); P120CAS; P120CTN
Mammalian Cell Selection:	Neomycin
Vector:	pCMV6-Entry (PS100001)
E. coli Selection:	Kanamycin (25 ug/mL)



[View online »](#)

**ORF Nucleotide Sequence:**

>RC233183 representing NM\_001206885  
 Red=Cloning site Blue=ORF Green=Tags(s)

TTTTGTAATACGACTCACTATAGGGCGGCCGGGAATTCGTCGACTGGATCCGGTACCGAGGAGATCTGCC  
 GCC**CGGATCGCC**

ATGGACGACTCAGAGGTGGAGTCGACCGCCAGCATCTTGGCCTCTGTGAAGGAACAAGAGGCCAGTTTG  
 AGAAGCTGACCCGGGCGCTGGAGGAGGAACGGCCACGCTCTCGGCGCAGCTGGAACGCGTCCGGGTCTC  
 ACCACAAGATGCCAACCCACTCATGGCCAACGGCACACTCACCCGCCGGCATCAGAACGGCCGGTTTGTG  
 GGCGATGCTGACCTTGAAGACAGAAATTTTCAGATTTGAAACTCAACGGACCCAGGATCACAGTCACC  
 TTCTATATAGCACCATCCCAGGATGCAGGAGCCGGGCGAGATTGTGGAGACCTACACGGAGGAGGATCC  
 TGAGGGAGCCATGTCTGTAGTCTCTGTGGAGACCTCAGATGATGGGACCACTCGGCGCACAGAGACCAG  
 GTCAAGAAAGTAGTGAAGACTGTGACAACACGGACAGTACAGCCAGTCGATATGGGACCAGACGGGTTGC  
 CTGTGGATGCTTCATCAGTTTCTAACAACTATATCCAGACTTTGGGTCGTGATTTCCGCAAGAATGGCAA  
 TGGGGGACCTGGTCCCTATGTGGGGCAAGCTGGCACTGCTACCCTTCTAGGAACTTCCACTACCCTCCT  
 GATGGTTATAGTCGCCACTATGAAGATGGTTATCCAGGTGGCAGTGATAACTATGGCAGTCTGTCCCGGG  
 TGACCCGCATTGAGGAGCGGTATAGGCCAGCATGGAAGGCTACCGGGCACCTAGTAGACAGGATGTGTA  
 TGGGCCCAACCCAGGTTCCGGGTAGGTGGGAGCAGCGTGGATCTGCATCGCTTTCATCCAGAGCCTTAT  
 GGGCTAGAGGATGACCAGCGTAGTATGGGCTATGATGACCTGGATTATGGTATGATGTCTGATTATGGCA  
 CTGCCCGTCGGACTGGGACACCTCTGACCCTCGTCGGCGCCTCAGGAGCTATGAAGACATGATTGGTGA  
 GGAGGTGCCATCGGATCAATACTACTGGGCTCCTTTGGCCAGCATGAGCGAGGAAGTTTAGCAAGCTTG  
 GATAGCTGCGCAAAGGAGGGCCTCCACCTCCTAATTGGAGACAGCCAGAGCTGCCAGAGGTGATCGCCA  
 TGCTTGGATTCCGCTTGGATGCTGTCAAGTCCAATGCAGCTGCATACCTGCAACACTTATGCTACCGCAA  
 TGACAAGGTGAAGACTGACGTGCGGAAGCTCAAGGGCATCCCAGTACTGGTGGGATTGTTAGACCATCCC  
 AAAAAGGAAGTGCACCTTGGAGCCTGTGGAGCTCTCAAGAATATCTCTTTTGGACGTGACCAGGATAACA  
 AGATTGCCATAAAAAACTGTGATGGTGTGCCTGCCCTTGTGCGATTGCTTCGAAAGGCTCGTGATATGGA  
 CCTTACTGAAGTTATTACCGGAACCCTGTGGAATCTTTTCATCCCAGTCAATCAAAATGGAGATTGTG  
 GACCATGCACTGCATGCCTTGACAGATGAAGTGATCATTCTCATTCTGGTTGGGAGCGGGAACCTAATG  
 AAGACTGTAAGCCACGCCATATTGAGTGGGAATCGGTGCTCACCAACACAGCTGGCTGCCTTAGGAATGT  
 AAGCTCAGAGAGGAGTGAAGCTCGCCGAAACTTCGGGAATGTGATGGTTTGTGATGCCCTCATTTTC  
 ATTTGTTACGGCTGAGATTGGGCAGAAGGATTACAGACAGCAAGCTTGTAGAGAAGTGTGTTTGCCTTCTTC  
 GGAACCTATCATATCAAGTTACCGGGAGATCCCACAGGCAGAGCGTTACCAAGAGGCAGCTCCCAATGT  
 TGCCAACAATACTGGGCCACATGCTGCCAGTTGCTTTGGGGCCAAAGAGGGCAAAGATGAGTGGTTCTCC  
 AGAGGGAAAAACCTATAGAGGATCCAGCAAACGATACAGTGGATTTCCCTAAAAGAACGAGTCCAGCTC  
 GAGGCTATGAGCTCTTATTTTCAGCCAGAGGTGGTTCCGATATACATCTCACTTCTTAAGGAGAGCAAGAC  
 TCCTGCCATCTAGAAGCCTCAGCTGGAGCTATCCAGAAGTGTGTGCTGGGCGCTGGACGTATGGTCTGA  
 TACATCCGCTCTGCTCTGCGTCAAGAGAAGGCTCTTTCTGCCATAGCTGACCTCCTGACTAATGAACATG  
 AACGGTGGTGAAGCTGCATCTGGAGCACTGAGAAACCTGGCTGTGGATGCTCGCAACAAGAATTAAT  
 TGTTAAACATGCTATTTCTAACTTGGTAAAGAATCTGCCAGGAGGACAGCAGAAGTCTCTTGGAAATTTT  
 TCTGAGGACACTGTCATCTCTATTTTGAACACTATCAACGAGGTTATCGCTGAGAACTTGGAGGCTGCCA  
 AAAAGCTTCGAGAGACACAGGATTTGAGAAGCTGGTGTGATCAACAAATCAGGGAACCGCTCAGAAAA  
 AGAAGTTCGAGCAGCAGCACTTGTATTACAGACAATCTGGGGATATAAGGAACTGCGGAAGCCACTGGAA  
 AAAGAAGGATGGAAGAAATCAGACTTTTCAGGTGAATCTAAACAATGCTTCCCGAAGCCAGAGCAGTCATT  
 CATATGATGATAGTACTCTCCCTCTATTGACCGGAACCAAAAATCAGATAAGAAACCTGATCGGGAAGA  
 AATTCAGATGAGCAATATGGGATCAAACACAAAATCACTAGATAACAACCTATCCACACCAAAATGAGAGA  
 GGAGACCACAATAGAACACTGGATCGATCGGGGATCTAGGCGACATGGAGCCATTGAAGGGAACAACAC  
 CCTTGATGCAGAAGATT

AG**CGGACCG**ACGCGTACGCGGCCGCTCGAGCAGAACTCATCTCAGAAGAGGATCTGGCAGCAAATGATATCC  
 TGGATTACAAGGATGACGACGATAAGGTTTAA

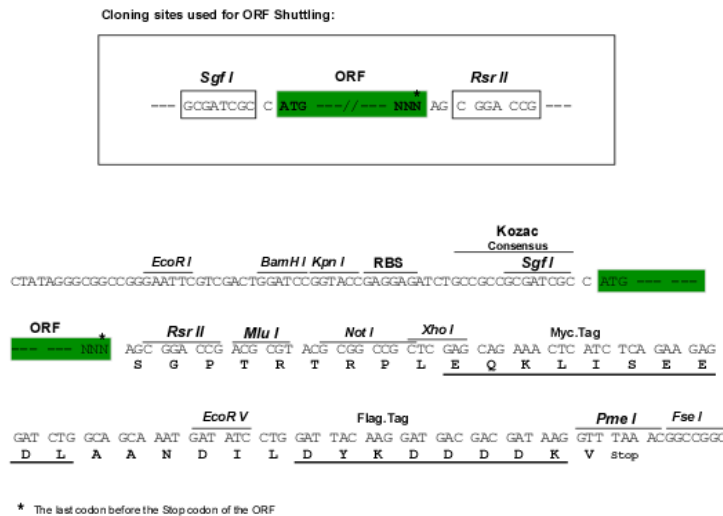
**Protein Sequence:** >RC233183 representing NM\_001206885  
Red=Cloning site Green=Tags(s)

MDDSEVESTASILASVKEQEAQFEKL TRALEEERRHVSAQLERVRVSPQDANPLMANGTLTRRHQNGRFV  
 GDADLERQKFSCLKNGPQDHSLLYSTIPRMQEPGQIVETYTEDPEGAMSVSVETSDDGTTTRTETT  
 VKKVVKTVTRTRVQPVAMGPDGLPVDASSVSNNYIQTGRDFRKNNGGPGPYVQGAGTATLPRNFHYPP  
 DGYSRHYEDGYPGGSDNYGSLSRVTRIEERYRPSMEGYRAPSRQDVYGPQPQVRVGGSSVDLHRFHPEPY  
 GLEDDQRSMGYDDL DYGMSDYGTARRTGTSPDRRRLRSYEDMIGEEVPSDQYYWAPLAQHERGSLASL  
 DSLRKGPPPPNWRQPELPEVIAMLGFRLDVAVKSNAAAYLQHLCYRNDKVKTQVRLKLGIPVLVGLLDHP  
 KKEVHLGACGALKNISFGRDQDNKIAIKNCDGVPALVRLLRKARDMDL TEVITGTLWNLSSHDSIKMEIV  
 DHALHALTDEVIIPHSGWEREPNEDCKPRHIEWESVL TNTAGCLRNVSSERSEARRKLRECDGLVDALIF  
 IVQAEIGQKSDSKLVENCVLLRNL SYQVHREIPQAERYQEAAPNVANNTGPHAASCFAKKGKDEWFS  
 RGKKPIEDPANDTVDFPKRTSPARGYELLFQPEVVRIYISLLKESKTPAILEASAGAIQNL CAGRWTYGR  
 YIRSALRQEKALSAIADLLTNEHERVVKAASGALRNLAVDARNKELIGKHAIPNLVKNLPGGQQNSSWNF  
 SEDTVISILNTINEVIAENLEAAKKLRETQGIEKLV L INKSGNRSEKEVRAAALVLQTIWGYKELRKPLE  
 KEGWKKSDFQVNLNNASRSQSSHSYDDSTLPLIDRNQKSDKKPDREEIQMSNMGSNKSLDNNYSTPNER  
 GDHNRTLDRSGDLGDMEPLKGTTPLMQKI

SGPTRTRPLEQKLI SEEDLAANDILDYKDDDDKV

**Restriction Sites:** SgfI-RsrII

**Cloning Scheme:**

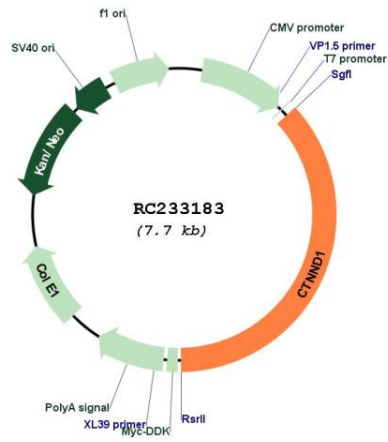


**ACCN:** NM\_001206885

**ORF Size:** 2817 bp

<b>OTI Disclaimer:</b>	The molecular sequence of this clone aligns with the gene accession number as a point of reference only. However, individual transcript sequences of the same gene can differ through naturally occurring variations (e.g. polymorphisms), each with its own valid existence. This clone is substantially in agreement with the reference, but a complete review of all prevailing variants is recommended prior to use. <a href="#">More info</a>
<b>OTI Annotation:</b>	This clone was engineered to express the complete ORF with an expression tag. Expression varies depending on the nature of the gene.
<b>Components:</b>	The ORF clone is ion-exchange column purified and shipped in a 2D barcoded Matrix tube containing 10ug of transfection-ready, dried plasmid DNA (reconstitute with 100 ul of water).
<b>Reconstitution Method:</b>	<ol style="list-style-type: none"> <li>1. Centrifuge at 5,000xg for 5min.</li> <li>2. Carefully open the tube and add 100ul of sterile water to dissolve the DNA.</li> <li>3. Close the tube and incubate for 10 minutes at room temperature.</li> <li>4. Briefly vortex the tube and then do a quick spin (less than 5000xg) to concentrate the liquid at the bottom.</li> <li>5. Store the suspended plasmid at -20°C. The DNA is stable for at least one year from date of shipping when stored at -20°C.</li> </ol>
<b>RefSeq:</b>	<a href="#">NM_001206885.1</a> , <a href="#">NP_001193814.1</a>
<b>RefSeq Size:</b>	6276 bp
<b>RefSeq ORF:</b>	2820 bp
<b>Locus ID:</b>	1500
<b>UniProt ID:</b>	<a href="#">O60716</a>
<b>Cytogenetics:</b>	11q12.1
<b>Protein Families:</b>	Druggable Genome
<b>Protein Pathways:</b>	Adherens junction, Leukocyte transendothelial migration
<b>MW:</b>	105.4 kDa
<b>Gene Summary:</b>	This gene encodes a member of the Armadillo protein family, which function in adhesion between cells and signal transduction. Multiple translation initiation codons and alternative splicing result in many different isoforms being translated. Not all of the full-length natures of the described transcript variants have been determined. Read-through transcription also exists between this gene and the neighboring upstream thioredoxin-related transmembrane protein 2 (TMX2) gene. [provided by RefSeq, Dec 2010]

Product images:



Circular map for RC233183