

## Product datasheet for **RC233166**

### CTNND1 (NM\_001206886) Human Tagged ORF Clone

#### Product data:

Product Type:	Expression Plasmids
Product Name:	CTNND1 (NM_001206886) Human Tagged ORF Clone
Tag:	Myc-DDK
Symbol:	CTNND1
Synonyms:	BCDS2; CAS; CTNND; p120; p120(CAS); p120(CTN); P120CAS; P120CTN
Mammalian Cell Selection:	Neomycin
Vector:	pCMV6-Entry (PS100001)
E. coli Selection:	Kanamycin (25 ug/mL)



[View online »](#)

**ORF Nucleotide Sequence:**

>RC233166 representing NM\_001206886  
 Red=Cloning site Blue=ORF Green=Tags(s)

TTTTGTAATACGACTCACTATAGGGCGGCCGGGAATTCGTCGACTGGATCCGGTACCGAGGAGATCTGCC  
 GCC**CGCATCGCC**

ATGGCCAACGGCACACTCACCCCGCGCATCAGAACGGCCGGTTGTGGGCGATGCTGACCTTAAAGAC  
 AGAAATTTTCAGATTTGAACTCAACGGACCCAGGATCACAGTACCTTCTATATAGCACCATCCCAG  
 GATGCAGGAGCCGGGCAGATTGTGGAGACCTACACGGAGGAGGATCCTGAGGGAGCCATGTCTGTAGTC  
 TCTGTGGAGACCTCAGATGATGGGACACTCGGCGCACAGAGACCACGGTCAAGAAAGTAGTGAAGACTG  
 TGACAACACGGACAGTACAGCCAGTCGCTATGGGACCAGACGGGTTGCCTGTGGATGCTTCATCAGTTTC  
 TAACTATATCCAGACTTTGGGTCGTGATTTCCGCAAGAAATGGCAATGGGGGACCTGGTCCCTATGTG  
 GGGCAAGTGGCACTGCTACCTTCTAGGAATTCCTACTACCTCCTGATGGTTATAGTCGCCACTATG  
 AAGATGGTTATCCAGGTGGCAGTGATAACTATGGCAGTCTGTCCGGGTGACCCGATTGAGGAGCGGTA  
 TAGGCCACAGCATGGAAGGCTACCGGCACCTAGTAGACAGGATGTGTATGGGCCCAACCCAGGTTCCGG  
 GTAGGTGGGAGCAGCGTGGATCTGCATCGCTTTCATCCAGAGCCTTATGGGCTAGAGGATGACCAGCGTA  
 GTATGGGCTATGATGACCTGGATTATGGTATGATGTCTGATTATGGCACTGCCCGTCGGACTGGGACACC  
 CTCTGACCCTCGTCGGCGCCTCAGGAGCTATGAAGACATGATTGGTGAGGAGGTGCCATCGGATCAATAC  
 TACTGGGCTCCTTTGGCCAGCATGAGCGAGGAAGTTAGCAAGCTTGGATAGCCTGCGCAAAGGAGGGC  
 CTCCACCTCCTAATTGGAGACAGCCAGAGCTGCCAGAGGTGATCGCCATGCTTGGATTCCGCTTGGATGC  
 TGTCAGTCCAATGCAGTGCATACCTGCAACACTTATGCTACCGCAATGACAAGGTGAAGACTGACGTG  
 CGGAAGCTCAAGGCATCCAGTACTGGTGGGATTGTTAGACCATCCAAAAAGGAAGTGCACCTTGGAG  
 CCTGTGGAGCTCAAGAATATCTCTTTGGACGTGACCAGGATAACAAGATTGCCATAAAAACTGTGA  
 TGGTGTGCCTGCCCTTGTGCGATTGCTTCGAAAGGCTCGTGATATGGACCTTACTGAAGTTATTACCGGA  
 ACCCTGTGGAATCTTTCATCCCATGACTCAATCAAAATGGAGATTGTGGACCATGCACTGCATGCCTTGA  
 CAGATGAAGTGATCATTCTCATTCTGGTTGGGAGCGGGAACCTAATGAAGACTGTAAGCCACGCCATAT  
 TGAGTGGGAATCGGTGCTCACCAACACAGCTGGCTGCCTTAGGAATGTAAGCTCAGAGAGGAGTGAAGCT  
 CGCCGGAACTTCGGGAATGTGATGGTTTGTGATGATGATGATGATGATGATGATGATGATGATGATGATGAT  
 AGAAGGATTGAGACAGCAAGCTTGTAGAGAACTGTGTTTGCCTTCTCGGAACTTATCATATCAAGTTCA  
 CCGGGAGATCCCACAGGCAGAGCGTTACCAAGAGGCAGCTCCCAATGTTGCCAACAACTAGGGCCACAT  
 GCTGCCAGTTGCTTTGGGGCCAAGAAGGGCAAAGGGAAAAACCTATAGAGGATCCAGCAAACGATACAG  
 TGGATTTCCCTAAAAGAACGAGTCCAGCTCGAGGCTATGAGCTCTTATTTAGCCAGAGGTGGTTCCGGAT  
 ATACATCTCACTTCTAAGGAGAGCAAGACTCCTGCCATCCTAGAAGCCTCAGCTGGAGCTATCCAGAAC  
 TTGTGTGCTGGGCGCTGGACGTATGGTCGATACATCCGCTCTGCTCTGCGTCAAGAGAAGGCTCTTTCTG  
 CCATAGCTGACCTCCTGACTAATGAACATGAACGGGTGGTGAAGCTGCATCTGGAGCACTGAGAAACCT  
 GGCTGTGGATGCTCGCAACAAAGAATTAATTGGTAAACATGCTATTCTAACTTGGTAAAGAATCTGCCA  
 GGAGGACAGCAGAACTCCTCTTGGAAATTTCTCTGAGGACACTGTCATCTCTATTTTGAACACTATCAACG  
 AGGTTATCGCTGAGAACTTGGAGGCTGCCAAAAAGCTTCGAGAGACACAGGGTATTGAGAAGCTGGTGT  
 GATCAACAAATCAGGGAACCGCTCAGAAAAAGAGTTTCGAGCAGCAGCACTTGTATTACAGACAATCTGG  
 GGATATAAGGAACTGCGGAAGCCACTGGAAAAAGAGGATGGAAGAAATCAGACTTTAGGTGAATCTAA  
 ACAATGCTTCCGAAGCCAGAGCAGTATTTCATATGATGATAGTACTCTCCCTCTCATTGACCGGAACCA  
 AAAATCAGATAAGAACTGATCGGGAAGAAATTCAGATGAGCAATATGGGATCAAACACAAAATCACTA  
 GATAACAATAATCCACACCAAATGAGAGAGGAGACCACAATAGAACACTGGATCGATCGGGGGATCTAG  
 GCGACATGGAGCCATTGAAGGGAACAACCCCTTGTGACAGGACGAGGGGAGGAAATCTCTGGAGGAAGA  
 GTTGGATGTGTTGGTTTGGATGATGAGGGGGCCAAGTGTCTTACCCTCCATGCAGAAGATT

**ACGCGT**ACGCGGCCGCTCGAGCAGAACTCATCTCAGAAGAGGATCTGGCAGCAAATGATATCTGGATT  
 ACAAGGATGACGACGATAAGGTTTAA

**Protein Sequence:** >RC233166 representing NM\_001206886  
Red=Cloning site Green=Tags(s)

MANGTLTRRHQNGRFVGDADLERQKFSDLKLNQPQDHSLLYSTIPRMQEPGQIVETYTEEDPEGAMSVV  
 SVETSDDGTTTRTETTvkVvKVTVTRTVQPVAMGPDGLPVDASSVSNNYIQTLGRDFRKNNGGPGPYV  
 GQAGTATLPRNFHYPPDGYSRHYEDGYPGGSDNYGSLSRVTRIEERYRPSMEGYRAPSRQDVYGPQVVR  
 VGGSSVDLHRFHPEPYGLEDDQQRSMGYDDL DYGMSDYGTARRTGTPSDPRRRLRSYEDMIGEEVPSDQY  
 YWAPLAQHERGSLASLDSLKGGPPPNWRQPELPEVIAMLGFRLDVAVKSNAAYLQHLCYRNDKVKTDV  
 RKLGIPVLVGLLDHPKKEVHLGACGALKNISFGRDQDNKIAIKNCDGVPALVRLLRKARDMDL TEVITG  
 TLWNLSSHDSIKMEIVDHALHALTDEVIIPHSGWEREPNEDCKPRHIEWESVLTNTAGCLRNVSSERSEA  
 RRKLRECDGLVDALIFIVQAEIGQKDSKLVENCVLLRNLSYQVHREIPQAERYQEAAPNVANNTGPH  
 AACFCGAKKGGKPIEDPANDTVDFPKRTSPARGYELLFQPEVVRIYISLLKESKTPAILEASAGAIQN  
 LCAGRWTYGRYIRSALRQEKALSAIADLLTNEHERVVKAASGALRNLAVDARNKELIGKHAIPNLVKNLP  
 GGQNSSWNFSEDTVISILNTINEVIAENLEAAKKLRETQGIEKLVINKSGNRSEKEVRAALVLQTIW  
 GYKELRPLEKEGWKKSDFQVNLNNASRSQSSHSYDDSTLPLIDRNQKSDKKPDREEIQMSNMGSNTKSL  
 DNNYSTPNERGDHNRTLDRSGDLGDMEPLKGTTPLMQDEGQESLEEELDVLVLDDEGGQVSYPMSQKI

TRTRPLEQKLISEEDLAANDILDYKDDDDKV

**Restriction Sites:**

Sgfl-MluI

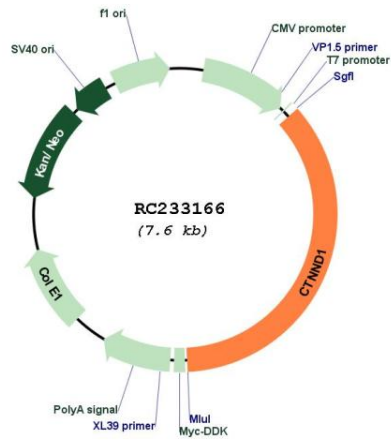
**Cloning Scheme:**



**ACCN:** NM\_001206886

<b>ORF Size:</b>	2724 bp
<b>OTI Disclaimer:</b>	The molecular sequence of this clone aligns with the gene accession number as a point of reference only. However, individual transcript sequences of the same gene can differ through naturally occurring variations (e.g. polymorphisms), each with its own valid existence. This clone is substantially in agreement with the reference, but a complete review of all prevailing variants is recommended prior to use. <a href="#">More info</a>
<b>OTI Annotation:</b>	This clone was engineered to express the complete ORF with an expression tag. Expression varies depending on the nature of the gene.
<b>Components:</b>	The ORF clone is ion-exchange column purified and shipped in a 2D barcoded Matrix tube containing 10ug of transfection-ready, dried plasmid DNA (reconstitute with 100 ul of water).
<b>Reconstitution Method:</b>	<ol style="list-style-type: none"><li>1. Centrifuge at 5,000xg for 5min.</li><li>2. Carefully open the tube and add 100ul of sterile water to dissolve the DNA.</li><li>3. Close the tube and incubate for 10 minutes at room temperature.</li><li>4. Briefly vortex the tube and then do a quick spin (less than 5000xg) to concentrate the liquid at the bottom.</li><li>5. Store the suspended plasmid at -20°C. The DNA is stable for at least one year from date of shipping when stored at -20°C.</li></ol>
<b>RefSeq:</b>	<a href="#">NM_001206886.1</a> , <a href="#">NP_001193815.1</a>
<b>RefSeq Size:</b>	6044 bp
<b>RefSeq ORF:</b>	2727 bp
<b>Locus ID:</b>	1500
<b>UniProt ID:</b>	<a href="#">O60716</a>
<b>Cytogenetics:</b>	11q12.1
<b>Protein Families:</b>	Druggable Genome
<b>Protein Pathways:</b>	Adherens junction, Leukocyte transendothelial migration
<b>MW:</b>	101.7 kDa
<b>Gene Summary:</b>	This gene encodes a member of the Armadillo protein family, which function in adhesion between cells and signal transduction. Multiple translation initiation codons and alternative splicing result in many different isoforms being translated. Not all of the full-length natures of the described transcript variants have been determined. Read-through transcription also exists between this gene and the neighboring upstream thioredoxin-related transmembrane protein 2 (TMX2) gene. [provided by RefSeq, Dec 2010]

Product images:



Circular map for RC233166