

Product datasheet for **RC233120**

STAT4 (NM_001243835) Human Tagged ORF Clone

Product data:

Product Type:	Expression Plasmids
Product Name:	STAT4 (NM_001243835) Human Tagged ORF Clone
Tag:	Myc-DDK
Symbol:	STAT4
Synonyms:	SLEB11
Mammalian Cell Selection:	Neomycin
Vector:	pCMV6-Entry (PS100001)
E. coli Selection:	Kanamycin (25 ug/mL)



[View online »](#)

**ORF Nucleotide
Sequence:**

>RC233120 ORF sequence
 Red=Cloning site Blue=ORF Green=Tags(s)

TTTTGTAATACGACTCACTATAGGGCGGCCGGGAATTCGTGACTGGATCCGGTACCGAGGAGATCTGCC
 GCC**CGGATCGCC**

ATGTCTCAGTGGAAATCAAGTCCAACAGTTAGAATCAAGTTTTGGAGCAGGTGGATCAATTCTATGATG
 ACAACTTTCCCATGGAAATTCGGCATCTGTTGGCCAATGGATTGAAAATCAAGACTGGGAGGCAGCTTC
 TAACAATGAAACCATGGCAACGATTCTTCTTCAAACCTGTTAATACAACCTGGATGAACAGTTAGTTCGT
 GTTTCCAAAGAGAAAAACCTACTCTTGATACACAATCTAAAAAGAATTAGGAAGGTCCTTCAGGGAAAAAT
 TTCATGGAAATCCAATGCATGTAGCTGTGGTTATTTCAAACCTGTTAAGGGAAGAGAGGAGAATATTGGC
 TGCAGCCAACATGCCTGTCCAGGGGCTCTAGAGAAATCCTTACAAAGTCTTCAGTTTCAGAAAGACAG
 AGGAATGTGGAGCACAAGTGGCTGCCATTAACAAACAGTGTGCAGATGACAGAACAAGATACCAAATACT
 TAGAAGATCTGCAAGACGAATTTGACTACAGGTATAAAACAATTCAGACAATGGATCAGAGTGACAAGAA
 TAGTGCCATGGTGAATCAGGAAGTTTTGACACTGCAGGAAATGCTTAACAGCCTCGATTTCAAGAGAAAG
 GAGGCTCTCAGTAAAATGACCCAAATCATCCATGAGACAGACCTGTTAATGAACACCATGCATAGAAG
 AGCTGCAAGACTGGAAGCGGGCGGAGCAAAATCGCTGCATCGGGGTCCACTCCACAATGGGCTCGACCA
 GCTTCAGAACTGCTTTACACTATTGGCAGAAAGCTTTTTCAAACCTGAGAAGGCAATTGGAGAAACTAGAG
 GAGCAATCTACAAAAATGACATATGAAGGTGATCCCATCCAAATGCAAAGAACTCACATGCTAGAAAAGAG
 TCACCTTCTTGATCTACAACCTTTTCAAGAACTCATTTGTGGTTGAGCGACAGCCATGTATGCCAACCCA
 CCCTCAGAGGCCGTTGGTACTTAAACCCTAATTCAGTTCAGTGTAAAACCTAAGGCTACTAATAAAATTTG
 CCAGAATAAACTATCAGGTAAGGTTAAGGCATCAATTGACAAGAATGTTTCAACTCTAAGCAACCGAA
 GATTTGTACTTTGTGGAATAATGTCAAAGCCATGTCTATTGAAGAATCTTCCAATGGGAGTCTCTCAGT
 AGAATTTGACATTTTGAACCAAGGAAATGAAGTCCAGTCTGGAGGTAAAGGAAATGAGGGCTGTCAC
 ATGGTGACTGAAGAACTTCATCCATAACGTTTGAACACAGATCTGCCTCTATGGCCTGACCATAGATT
 TGGAGACCAGCTCATTGCCTGTGGTGATGATTTCCAATGTGAGTCAAGTACCTAATGCTTGGGCATCCAT
 CATTGTTGACAACGTGTCAACCAACGATCCCGAAGCTGGTTTTCTTTAATAATCCTCCACCTGCCACA
 TTGAGTCAACTACTGGAGGTGATGAGCTGGCAGTTTTTCATCGTACGTTGGTCTGTTGTTAACTCAGATC
 AACTCCATATGCTGGCAGAGAAGCTTACAGTCCAATCTAGCTACAGTGTGGTCACTCACCTGGGCCAA
 GTTCTGCAAGGAACATTTACCTGGTAAATCATTTACCTTTGGACATGGCTTGAAGCAATATTGGATCTA
 ATTAAGAAACACATTTCTCCCTTTGGATTGATGGGTATGTCATGGGCTTTGTTAGCAAAGAGAAGGAAC
 GGCTGTTGCTAAAGGATAAAATGCCTGGCACCTTTTTATTAAGATTCAGTGAAAGCCATCTCGGAGGAAT
 AACTTTACCTGGGTGGACCATTCTGAAAGTGGGGAAGTGAAGTTCACCTCTGTAGAACCCTACAATAAA
 GGCCGGTTGTCTGCTCTGCCATTCGCTGACATCCTGCGAGACTACAAAGTTATTATGGCTGAAAACATTC
 CTGAAAACCTCTGAAGTACCTATATCCTGACATTCCTCAAAGACAAGCCTTCGGTAAACACTACAGCTC
 TCAGCCTTGCGAAGTTTCAAGACCAACAGAAAGGGGTGACAAAGGTTATGTTCTCTGTTTTTATCCCC
 ATCTCAACAATCCGAAGTGATTCACAGAGCCACATTCCTCATCAGACCTTCTCCCATGTCTCCAAGTG
 TGTATGCCGGTGTGAGAGAAAACCTGAGTCCCACAACAATTGAACTGCAATGAAGTCTCCTTATTCTGC
 TGAA

ACGCGTACGCGGCCGCTCGAGCAGAAACTCATCTCAGAAGAGGATCTGGCAGCAAATGATATCCTGGATT
 ACAAGGATGACGACGATAAGGTTTAA

Protein Sequence: >RC233120 protein sequence
 Red=Cloning site Green=Tags(s)

```

MSQWNQVQQLEIKFLEQVDQFYDDNFPMEIRHLLAQWIENQDWEAASNNETMATILLQNLILQLDEQLGR
VSKEKNLLLIHNLKRIRKVLQGFHGNPMHVAVVISNCLREERRILAAANMPVQGPLKSLQSSSVSERQ
RNVEHKVAAIKNSVQMT EQDTKYLEDLQDEFDYRYKTIQTMDQSDKNSAMVNQEVLTLEMLNSLDFKRR
EALSKMTQIIHETDLLMNTMLIEELQDWKRRQIACIGGPLHNGLDQLQNCFTLLAESLFLRRQLEKLE
EQSTKMTYEGDPIPMQRTHMLERVTFLLIYNLFKNSFVVERQPCMPHPQRPLVLKTLIQFTVKLRLLIKL
PELNYQVKVKASIDKNVSTLSNRRFVLCGTNVKAMSIEESSNGSLSVEFRHLQPKEMKSSAGGKGNEGCH
MVTEELHSITFETQICLYGLTIDLETSSLPVVMISNVSQLPNAWASIIWYNVSTNDSQNLVFFNNPPPAT
LSQLLEVMSWQFSSYVGRGLNSDQLHMLAEKLTQSSYSDGHLTWAKFCKEHLPGKSFTFTWLEAILDL
IKKHILPLWIDGYVMGFVSKERLLLKDKMPGTFLLRFSESHLGGITFTWVDHSESGEVRFHSEVPEYNK
GRLSALPFADILRDYKVI MAENIPENPLKYL YPDIPKDKAFGKHYSQPCEVSRP TERGDKGYVPSVFI
P ISTIRSDSTEPHSPDLLPMSVYAVLRENLSPTTIETAMKSPYSAE
  
```

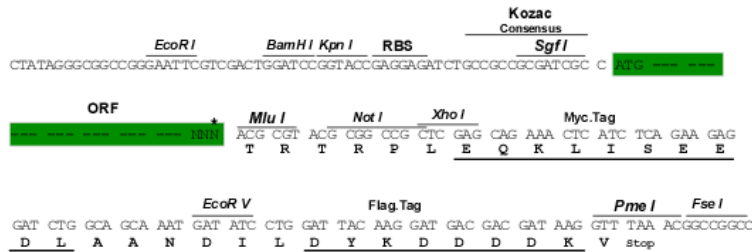
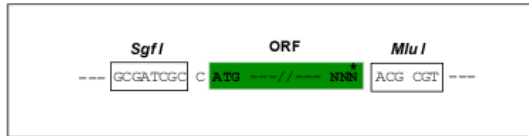
TRTRPLEQKLI SEEDLAANDILDYKDDDDKV

Chromatograms: https://cdn.origene.com/chromatograms/mk6202_a12.zip

Restriction Sites: Sgfl-MluI

Cloning Scheme:

Cloning sites used for ORF Shuttling:



* The last codon before the Stop codon of the ORF

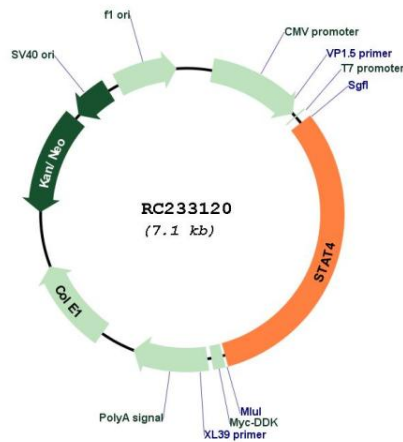
ACCN: NM_001243835

ORF Size: 2244 bp

OTI Disclaimer:	<p>Due to the inherent nature of this plasmid, standard methods to replicate additional amounts of DNA in E. coli are highly likely to result in mutations and/or rearrangements. Therefore, OriGene does not guarantee the capability to replicate this plasmid DNA. Additional amounts of DNA can be purchased from OriGene with batch-specific, full-sequence verification at a reduced cost. Please contact our customer care team at custsupport@origene.com or by calling 301.340.3188 option 3 for pricing and delivery.</p> <p>The molecular sequence of this clone aligns with the gene accession number as a point of reference only. However, individual transcript sequences of the same gene can differ through naturally occurring variations (e.g. polymorphisms), each with its own valid existence. This clone is substantially in agreement with the reference, but a complete review of all prevailing variants is recommended prior to use. More info</p>
OTI Annotation:	This clone was engineered to express the complete ORF with an expression tag. Expression varies depending on the nature of the gene.
Components:	The ORF clone is ion-exchange column purified and shipped in a 2D barcoded Matrix tube containing 10ug of transfection-ready, dried plasmid DNA (reconstitute with 100 ul of water).
Reconstitution Method:	<ol style="list-style-type: none"> 1. Centrifuge at 5,000xg for 5min. 2. Carefully open the tube and add 100ul of sterile water to dissolve the DNA. 3. Close the tube and incubate for 10 minutes at room temperature. 4. Briefly vortex the tube and then do a quick spin (less than 5000xg) to concentrate the liquid at the bottom. 5. Store the suspended plasmid at -20°C. The DNA is stable for at least one year from date of shipping when stored at -20°C.
RefSeq:	NM_001243835.2
RefSeq Size:	2789 bp
RefSeq ORF:	2247 bp
Locus ID:	6775
UniProt ID:	Q14765
Cytogenetics:	2q32.2-q32.3
Protein Families:	Druggable Genome, Transcription Factors
Protein Pathways:	Jak-STAT signaling pathway
MW:	85.9 kDa

Gene Summary:

The protein encoded by this gene is a member of the STAT family of transcription factors. In response to cytokines and growth factors, STAT family members are phosphorylated by the receptor associated kinases, and then form homo- or heterodimers that translocate to the cell nucleus where they act as transcription activators. This protein is essential for mediating responses to IL12 in lymphocytes, and regulating the differentiation of T helper cells. Mutations in this gene may be associated with systemic lupus erythematosus and rheumatoid arthritis. Alternate splicing results in multiple transcript variants that encode the same protein. [provided by RefSeq, Aug 2011]

Product images:


Circular map for RC233120