

Product datasheet for **RC233102**

LGR7 (RXFP1) (NM_001253728) Human Tagged ORF Clone

Product data:

Product Type:	Expression Plasmids
Product Name:	LGR7 (RXFP1) (NM_001253728) Human Tagged ORF Clone
Tag:	Myc-DDK
Symbol:	RXFP1
Synonyms:	LGR7; RXFPR1
Vector:	pCMV6-Entry (PS100001)
E. coli Selection:	Kanamycin (25 ug/mL)
Cell Selection:	Neomycin



[View online »](#)

ORF Nucleotide
Sequence:

>RC233102 representing NM_001253728
Red=Cloning site Blue=ORF Green=Tags(s)

TTTTGTAATACGACTCACTATAGGGCGGCCGGAATTCGTCGACTGGATCCGGTACCGAGGAGATCTGCC
GCC**CGGATCGCC**

ATGACATCTGGTTCTGTCTTCTTCTACATCTTAATTTTTGGAAAAATTTTTCTCATGGGGTGGACAGG
ATGTCAAGTGCTCCCTTGGCTATTTCCCTGTGGGAACATCACAAAGTGCTTGCCTCAGCTCCTGCACTG
TAACGGTGTGGACGACTGCGGGAATCAGGCCGATGAGGACAACCTGTGTGGTCGGTTCTGTGCCAGTGCAA
TGTCTTTGCCAAGGTCTGGAGCTTGACTGTGATGAAACCAATTTACGAGCTGTTCCATCGGTTTCTTCAA
ATGTGACTGCAATGTCACCTCAGTGAACCTTAATAAGAAAGCTTCTCCTGATTGCTTCAAGAATTATCA
TGATCTTCAGAAGCTGTACCTGCAAAACAATAAGATTACATCCATCTCCATCTATGCTTTCAGAGGACTG
AATAGCCTTACTAACTGTATCTCAGTCATAACAGAATAACCTTCTGAAGCCGGGTGTTTTGAAGATC
TTCACAGACTAGAATGGCTGATAATTGAAGATAATCACCTCAGTCGAATTTCCCACCAACATTTTATGG
ACTAAATCTCTTATTCTTATGCTGATGAATAACGCTCTCACCCGTTTACCTGATAAACCTCTCTGT
CAACACATGCCAAGACTACATTGGCTGGACCTGAAGGCAACCATATCCATAATTTAAGAAATTTGACTT
TATTTCTCGAGTAATTTAACTGTTTTAGTGATGAGGAAAAACAAAATTAATCACTTAAATGAAAAATC
TTTTGCACCTCTCCAGAACTGGATGAATTGGATTTAGGAAAGTAATAAGATTGAAAAATCTCCACCGCTT
ATATTCAGGACCTGAAGGAGCTGTCAATTTGAATCTTCTCCTATAATCCAATCCAGAAAATTCAGCAA
ACCAATTTGATTATCTTGTCAAACCTCAAGTCTCTCAGCCTAGAAGGGATTGAAAATTTCAAATATCCAACA
AAGGATGTTTAGACCTCTTATGAATCTCTCAGCATATATTTAAGAAATTCAGTACTGTGGGTATGCA
CCACATGTTCCGAGCTGTAACCAAACTGATGGAATTCATCTCTAGAGAATCTTTGGCAAGCATTG
TTCAGAGAGTATTTGTCTGGGTTGTATCTGCAGTTACCTGCTTTGGAAACATTTTTGTCAATTTGCAATGCG
ACCTTATACAGGTCTGAGAACAAGCTGTATGCCATGTCAATTTTCTCTGCTGTGCCGACTGCTTA
ATGGGAATATATTTATTCGTGATCGGAGGCTTTGACCTAAAGTTTCGTGGAGAATACAATAAGCATGCGC
AGCTGTGGATGGAGAGTACTCATTGTCAGCTTGTAGGATCTTTGGCCATTCTGTCCACAGAAGTATCAGT
TTTACTGTAAACATTTCTGACATTGGAAAAATACATCTGCATTGTCTATCCTTTTATAGTGTGAGACCT
GGAAAAATGCAGAACAAATACAGTTCTGATTCTCATTGGATTACTGGTTTTATAGTGGCTTTCATTCCAT
TGAGCAATAAGGAATTTTCAAAAATCTATGGCACAATGGAGTATGCTTCCCTTTCATTGAGAAGA
TACAGAAAGTATTGGAGCCAGATTTATCAGTGGCAATTTTCTTGGTATTAATTTGGCCGATTTATC
ATCATAGTTTTTCTATGGAAGCATGTTTTATAGTGTTCAAAAGTCCATAACAGCAACTGAAATAC
GGAATCAAGTTAAAAAGAGATGATCCTTGCCAAACGTTTTTCTTTATAGTATTTACTGATGCATTATG
CTGGATACCCATTTTGTAGTGAATTTCTTCTACTGCTTCAGGTAGAAATACCAGGTACCATAACTCT
TGGGTAGTGATTTTTATTCTGCCATTAACAGTCTTTGAACCAATTTCTTACTCTGACCACAAGAC
CATTTAAAGAAATGATTCATCGGTTTTGGTATAACTACAGACAAAGAAAACTATGGACAGCAAAGGTCA
GAAAACATATGCTCCATCATTCTGCGGTGAAATGTGGCCACTGCAGGAGATGCCACCTGAGTTAATG
AAGCCGGACCTTTTACATACCCCTGTGAAATGTCACTGATTTCTCAATCAACGAGACTCAATTCCTATT
CA

ACGCGTACGCGGCCGCTCGAGCAGAACTCATCTCAGAAGAGGATCTGGCAGCAAATGATATCCTGGATT
ACAAGGATGACGACGATAAGGTTTAA

Protein Sequence: >RC233102 representing NM_001253728
 Red=Cloning site Green=Tags(s)

MTSGSVFFYILIFGKYFSHGGGQDVKCSLGYFPCGNITKCLPQLLHCNGVDDCGNQAEDNCVVGSVVPVQ
 CLCQGLELDCDETNLRAPVSVSSNVTAMSLQWNLIRKLPDCFKNYHDLQKLYLQNNKITSISIIYAFRGL
 NSLTKLYLSHNRITFLKPGVFEDLHRLEWLIIEDNHLSRISPTTFYGLNSLILLVLMNNVLRPLDPKPLC
 QHMPRLHWLDLEGNHIIHLRNLTFISCSNLTVLVMRKNKINHLNENTFAPLQKLELDLGSNKIENLPL
 IFKDLKELSQLNLSYNPIQKIQANQFDYLVKLSLSLEGIEISNIQRMFRPLMNLSHIYFKKFQYCGYA
 PHVRSCKPNTDGISSLENLLASIIQRVFVWVSAVTCFGNIFVICMRPYIRSENKLYAMSIISLCCADCL
 MGIYLFVIGGFDLKFRGEYNKHAQLWMESTHCQLVGLAILSTEVSLLLLTFLTLEKYICIVYPPRCVPRP
 GKCRITITVLIIWITGFIVAFIPLSNKEFFKNYYGTNGVCFPLHSEDTESIGAQIYSVAIFLGINLAAFI
 IIVFSYGSMFYSVHQSATATEIRNQVKKEMILAKRFFFIVFTDALCWIPIFVVKFLLQVEIPGTITS
 WVVIFILPINSALNPILYTLTTRPFKEMIHFRWYNYRQRKSMDSKGQKTYAPSFIVVEMWPLQEMPELM
 KPDLFTYPCEMSLISQSTRLNSYS

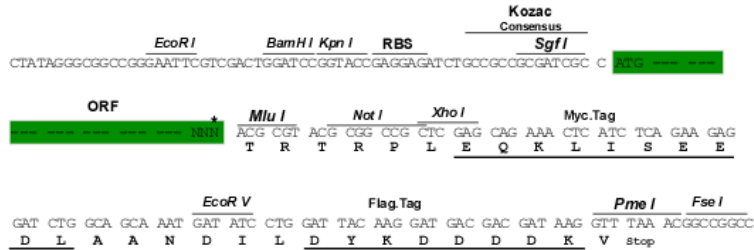
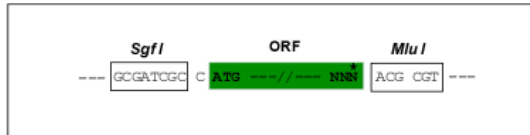
TRTRPLEQKLISEEDLAANDILDYKDDDDKV

Restriction Sites:

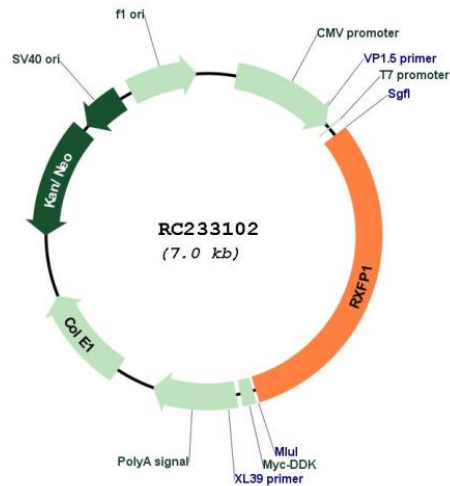
Sgfl-MluI

Cloning Scheme:

Cloning sites used for ORF Shuttling:



* The last codon before the Stop codon of the ORF

Plasmid Map:


ACCN: NM_001253728

ORF Size: 2172 bp

OTI Disclaimer: The molecular sequence of this clone aligns with the gene accession number as a point of reference only. However, individual transcript sequences of the same gene can differ through naturally occurring variations (e.g. polymorphisms), each with its own valid existence. This clone is substantially in agreement with the reference, but a complete review of all prevailing variants is recommended prior to use. [More info](#)

OTI Annotation: This clone was engineered to express the complete ORF with an expression tag. Expression varies depending on the nature of the gene.

Components: The ORF clone is ion-exchange column purified and shipped in a 2D barcoded Matrix tube containing 10ug of transfection-ready, dried plasmid DNA (reconstitute with 100 ul of water).

Reconstitution Method:

1. Centrifuge at 5,000xg for 5min.
2. Carefully open the tube and add 100ul of sterile water to dissolve the DNA.
3. Close the tube and incubate for 10 minutes at room temperature.
4. Briefly vortex the tube and then do a quick spin (less than 5000xg) to concentrate the liquid at the bottom.
5. Store the suspended plasmid at -20°C. The DNA is stable for at least one year from date of shipping when stored at -20°C.

RefSeq: [NM_001253728.2](#)

RefSeq Size: 3775 bp

RefSeq ORF: 2175 bp

Locus ID: 59350

UniProt ID:	<u>Q9HBX9</u>
Cytogenetics:	4q32.1
Protein Families:	Druggable Genome, GPCR, Transmembrane
Protein Pathways:	Neuroactive ligand-receptor interaction
MW:	83.5 kDa
Gene Summary:	<p>This gene encodes a member of the leucine-rich repeat-containing subgroup of the G protein-coupled 7-transmembrane receptor superfamily. The encoded protein plays a critical role in sperm motility, pregnancy and parturition as a receptor for the protein hormone relaxin. Decreased expression of this gene may play a role in endometriosis. Alternatively spliced transcript variants encoding multiple isoforms have been observed for this gene. [provided by RefSeq, Dec 2011]</p>