

Product datasheet for **RC233100**

RAP80 (UIMC1) (NM_001199298) Human Tagged ORF Clone

Product data:

Product Type:	Expression Plasmids
Product Name:	RAP80 (UIMC1) (NM_001199298) Human Tagged ORF Clone
Tag:	Myc-DDK
Symbol:	UIMC1
Synonyms:	RAP80; X2HRIP110
Vector:	pCMV6-Entry (PS100001)
E. coli Selection:	Kanamycin (25 ug/mL)
Cell Selection:	Neomycin



[View online »](#)

**ORF Nucleotide
Sequence:**

>RC233100 representing NM_001199298
 Red=Cloning site Blue=ORF Green=Tags(s)

TTTTGTAATACGACTCACTATAGGGCGGCCGGAATTCGTCGACTGGATCCGGTACCGAGGAGATCTGCC
 GCC**CGCATCGCC**

ATGCCACGGAGAAAGAAAAAGTTAAAGAAGTCTCCGAATCTCGAACCTGGAGAAGAAGGATGTGGAAA
 CTACCAGTTCTGTCAAGTGTGAAGAGGAAGCGTAGACTTGAGGATGCATTATTGTGATATCCGATAGTGA
 TGGAGAGGAACCAAGGAGGAAAAATGGGTTGCAGAAAACGAAGACAAAACAGTCGAATAGAGCAAAGTGT
 TTGGCCAAAAGAAAAATCGCACAGATGACAGAAGAAGAACAGTTTGTCTGGCTCTCAAAATGAGTGAGC
 AGGAAGCTAGGGAGGTGAACAGCCAGGAGGAGGAAGAAGAGGAGCTTTGAGGAAAGCCATTGCTGAAAG
 CCTGAATAGTTGCCGGCCTTCTGATGCTCCGCTACCAGATCTCGACCTCTGGCCACTGGACCGTCTTCC
 CAGTCCCATCAAGAGAAAACCACAGACTCTGGGCTCACTGAAGGCATATGGCAGCTGGTACCTCCATCAC
 TGTTTAAAGGCTCACATATCAGTCAGGGAACGAGGCTGAGGAAAGAGAGGAGCCTTGGGACCACACTGA
 AAAACTGAAGAGGAGCCGGTCTCTGGCAGCTCAGGAAGCTGGGACCAGTCAAGCCAGCCAGTGTGTTGAG
 AATGTGAACGTTAAATCTTTTGACAGATGTACTGGCCACTCGGCTGAGCACACACAGTGTGGGAAGCCAC
 AGGAAAGTACTGGGAGGGTCTGCTTTTCTCAAAGCTGTCCAGGGTAGCGGGGACACATCTAGGCACTG
 TCTACCTACCCTAGCAGATGCCAAAGGTCTCCAGGACACTGGGGGCACTGTGAACATTTCTGGGGTATT
 CCATTCTGCCCTGATGGAGTAGACCCTAACCAAGTATACCAAGGTCATTCTCTGCCAGTTGGAGGTTTATC
 AAAAGAGCCTGAAAATGGCTCAGAGGCAGCTCCTTAATAAAAAAGGTTTTGGGGAACCAAGTGTACCTAG
 ACCTCCTTCTCTGATCCAGAATGAATGTGGCAAGGAGAGCAGGCTAGTGAGAAAAATGAATGCATCTCA
 GAAGATATGGGAGATGAAGACAAAGAGGAGAGGAGGAGTCTAGGGCATCTGACTGGCACTCAAAAACCA
 AGGATTTCCAGGAAAGCTCAATTAAGCTTTGAAAGAGAAAACCTTTGTTGGAGGAAGAACCAACAACCA
 TCATGGTCAGTCTTCCCAAGGGATTGTTGAAGAACTTCTGAAGAGGGAAACTCTGTACCTGCTTCACAA
 AGTGTGCTGCTTTGACCAGTAAGAGAAGCTTAGTCCTTATGCCAGAGAGTTCTGCAGAAGAAATCACTG
 TTTGCTCTGAGACCCAGCTAAGTTCCTCTGAAACTTTTGACCTTGAAAGAGAAGTCTCTCCAGGTAGCAG
 AGATATCTTGGATGGAGTCAGAATAATAATGGCAGATAAGGAGGTTGGTAACAAGGAAGATGCTGAGAAG
 GAAGTAGCTATTTCTACCTTCTCATCCAGTAACCAGGTATCCTGCCCGCTATGTGACCAATGCTTTCCAC
 CCACAAAGATTGAACGACATGCCATGACTGCAATGGTCTGATGGAGGAAGATACAGTATTGACTCGGAG
 AAAAAAGAGGCCAAGACCAAGAGTGACAGTGGGACAGCTGCCAGACTTCTCTAGACATTGACAAGAAT
 GAGAAGTGTACCTCTGTAATCCCTGGTCCCATTAGAGAGTATCAGTGTGATGTGGACTCCTGTCTCC
 AGCTTGCAAAGGCTGACCAAGGAGATGGACCTGAAGGGAGTGGAAGAGCATGTTCAACTGTGGAGGGGAA
 GTGGCAGCAGAGGCTGAAGAACC AAAAGGAAAAAGGCCACAGTGAAGGCCGACTCCTTAGTTTCTTGAA
 CAGTCTGAGCACAAAGACTTCAGATGCAGACATCAAGTCTTCAGAAAACAGGAGCCTTCAGGGTGCCTTAC
 CAGGGATGGAAGAGGCAGGCTGCAGCAGAGAGATGCAGAGTCTTTTACACGTCGTGACTTAAATGAATC
 TCCCGTCAAGTCTTTTGTTCATTTTCCAGAAAGCCACAGATTGCTTAGTGGACTTTAAAAAGCAAGTTACT
 GTCCAGCCAGGTAGTCGGACACGGACCAAAGCTGGCAGAGGAAGAAGGAGAAAATTC

ACGCGTACGCGGCCGCTCGAGCAGAACTCATCTCAGAAGAGGATCTGGCAGCAAATGATATCCTGGATT
 ACAAGGATGACGACGATAAGGTTTAA

Protein Sequence: >RC233100 representing NM_001199298
 Red=Cloning site Green=Tags(s)

MPRRKKKVKVESESRNLEKKDVTSSSVSVKRKRRLLEDAFIVISDSDGEEPKEENGLQKTKTKQSNRAKC
 LAKRKIAQMTEEEQFALALKMSEQEAREVNSQEEEEELLRKAIAESLNSCRPSDASATRSRPLATGPSS
 QSHQEKTTDSGLTEGIWQLVPPSLFKGSHISQGNEAEEREPEWDHTEKTEEEPVSQSSGSGSWDQSSQPVFE
 NVNVKSFDRCTGHSAEHTQCGKPQESTGRGSFLKAVQSGDTSRHCLPTLADAKGLQDTGGTVNYFWGI
 PFCPDGVDPNQYTKVILCQLEVYQKSLKMAQRQLLNKKGFGEVLPVLRPPSLIQNECGQGEQASEKNECIS
 EDMGDEDKEERQESRASDWHSKTKDFQESSIKSLKEKLLLEEEPTTSHGQSSQGI VEETSEEENSVPASQ
 SVAALTSKRSLVLMPESSAEEITVCPETQLSSSETFDLREVPGRSDILDGVRIIMADKEVGNKEDA
 EVAISTFSSSNQVSCPLCDQCFPPTKIERHAMYCNGLEEDTVL TRRQKEAKTKSDSGTAAQTSLDIDKN
 EKCYLCKSLVPFREYQCHVDSCQLAKADQGDGPEGSGRACSTVEGKWQQRLLKNPKEKGHSEGRLLSFL
 EQSEHKTSADIKSSETGAFRVSPGMEEAGCSREMQSSF TRRDLNESPVKSFVSI SEATDCLVDFKKQVT
 VQPGSRTRTKAGRGRRRKF

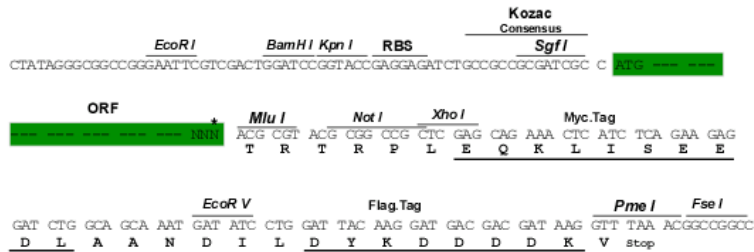
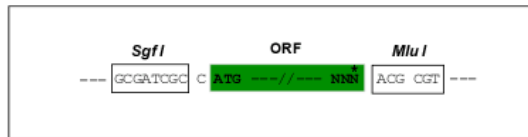
TRTRPLEQKLI SEEDLAANDILDYKDDDDKV

Restriction Sites:

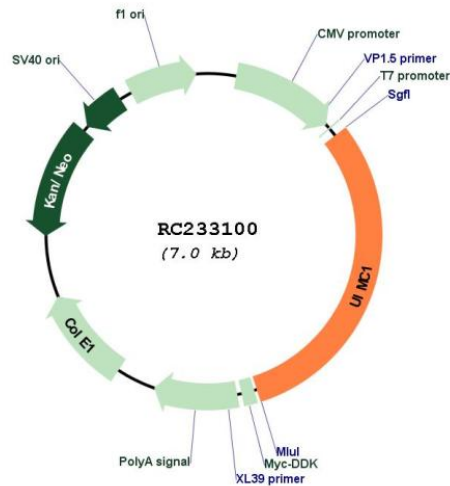
Sgfl-MluI

Cloning Scheme:

Cloning sites used for ORF Shuttling:



* The last codon before the Stop codon of the ORF

Plasmid Map:


ACCN: NM_001199298

ORF Size: 2157 bp

OTI Disclaimer: The molecular sequence of this clone aligns with the gene accession number as a point of reference only. However, individual transcript sequences of the same gene can differ through naturally occurring variations (e.g. polymorphisms), each with its own valid existence. This clone is substantially in agreement with the reference, but a complete review of all prevailing variants is recommended prior to use. [More info](#)

OTI Annotation: This clone was engineered to express the complete ORF with an expression tag. Expression varies depending on the nature of the gene.

Components: The ORF clone is ion-exchange column purified and shipped in a 2D barcoded Matrix tube containing 10ug of transfection-ready, dried plasmid DNA (reconstitute with 100 ul of water).

Reconstitution Method:

1. Centrifuge at 5,000xg for 5min.
2. Carefully open the tube and add 100ul of sterile water to dissolve the DNA.
3. Close the tube and incubate for 10 minutes at room temperature.
4. Briefly vortex the tube and then do a quick spin (less than 5000xg) to concentrate the liquid at the bottom.
5. Store the suspended plasmid at -20°C. The DNA is stable for at least one year from date of shipping when stored at -20°C.

RefSeq: [NM_001199298.2](#)

RefSeq Size: 2615 bp

RefSeq ORF: 2160 bp

Locus ID:	51720
UniProt ID:	Q96RL1
Cytogenetics:	5q35.2
Protein Families:	Druggable Genome, Transcription Factors
MW:	80.2 kDa
Gene Summary:	This gene encodes a nuclear protein that interacts with Brca1 (breast cancer 1) in a complex to recognize and repair DNA lesions. This protein binds ubiquitinated lysine 63 of histone H2A and H2AX. This protein may also function as a repressor of transcription. Alternative splicing results in multiple transcript variants. [provided by RefSeq, Dec 2015]