

## Product datasheet for **RC233088**

### **RHOBTB1 (NM\_001242359) Human Tagged ORF Clone**

#### **Product data:**

|                           |   |
|---------------------------|---|
| Product Type:             | Expression Plasmids                           |
| Product Name:             | RHOBTB1 (NM_001242359) Human Tagged ORF Clone |
| Tag:                      | Myc-DDK                                       |
| Symbol:                   | RHOBTB1                                       |
| Mammalian Cell Selection: | Neomycin                                      |
| Vector:                   | pCMV6-Entry (PS100001)                        |
| E. coli Selection:        | Kanamycin (25 ug/mL)                          |



[View online »](#)

ORF Nucleotide  
Sequence:

>RC233088 representing NM\_001242359  
Red=Cloning site Blue=ORF Green=Tags(s)

TTTTGTAATACGACTCACTATAGGGCGGCCGGAATTCGTCGACTGGATCCGGTACCGAGGAGATCTGCC  
GCCGCGATCGCC

ATGGACGCTGACATGGACTACGAAAGACCAACGTTGAAACTATCAAATGTGTGGTCGTGGGTGACAATG  
CGTGGGGAAGACGCGCTTGATCTGTGCCAGGGGTGCAACACCACACTCACGCAGTATCAGCTGCTGGC  
CACCCACGTGCCAACAGTGTGGCGATTACCAGTACCGCGTGTGCCAGGAGGTTTGGAGCGTTCTCGG  
GATGTTGTTGATGAAGTGAAGTGTCTCTCAGGCTTTGGGATACTTTTGGTGATCATCACAAGACAGAC  
GCTTTGCATATGGCAGGTCTGATGTTGTGGTCCTCTGTTTTTCGATTGCTAATCCCAATTCCTAAATCA  
TGTGAAAAGCATGTGGTATCCAGAAATCAAGCACTTTTGCCTCGAACACCCGTTATCCTTGTGGGTGC  
CAGCTTGATCTCCGCTATGCCGACCTGGAAGCTGTTAATCGAGCCAGGCGCCCGTTAGCAAGGCCATAA  
AGAGAGGGGATATTTGCCCCAGAAAAGGCCGAGAGGTAGCAAAGGAACTTGGCTTACCATACTATGA  
AACAAAGCGTGTGGACAGTTTGGTATCAAGGATGTGTTTGACAATGCAATCCGAGCAGCGCTGATTTC  
CGCAGGCACCTGCAATTCGAAATCCACCTAAAGAAAGTCCAGAAACCTTTACTTCAGGCACCTTCC  
TACCTCCAAAAGCCCTCCACCGGTATCAAAATTCAGAGTGTCTTCCATGGGGACAAATGAAGCTGC  
CTGTTTACTGGACAATCCTCTATGTGCCGATGTTCTGTTTCATCCTTCAGGACCAGGAACACATCTTTGCA  
CATCGAATTTACCTCGCTACCTCTTCTTCCAAATTTTATGATCTGTTTTAATGGAATGTGAAGAATCCC  
CAAATGGGAGTGAAGGAGCCTGTGAGAAAGAGAAGCAGAGCAGAGATTTCCAGGGGCGGATATTGAGTGT  
CGACCCAGAGGAAGAAAGGGAGGAGGGCCCGCTAGGATTCCTCAGGCCAGCAGTGAAGTCTTCAAAC  
AAGAGCCTGGTGGAGGCTCTGGGCTGGAAGCCGAGGGTGCAGTTCCTGAGACACAGACTTGGCCGGAT  
GGAGTAAGGGGTTCAATTGGCATGCACAGGAAATGCAAGTCAACCCATTTCAAAGCGGATGGGGCCCAT  
GACTGTGGTCAGGATGGACGCTTCAGTCCAGCCAGGCCCTTTTCGGACCTGCTCCAGTTTCTTTATACG  
GGACAACCTGGATGAAAAGGAAAAGGATTTGGTGGGCTGGCTCAGATCGCAGAGGTCCTCGAGATGTTTCG  
ATTTGAGGATGATGGTGGAAAACATCATGAACAAGGAAGCCTTCATGAACCAGGAGATTACGAAAGCCTT  
TCACGTAAGGAAAGCCAATCGGATAAAAGAGTGTCTCAGCAAGGGAACGTTCTCGGACGTGACATTTAAA  
TTGGACGATGGAGCCATCAGTGCCACAAGCCGCTGCTGATCTGTAGCTGTGAGTGGATGGCAGCCATGT  
TCGGGGGGTCATTTGTGAAAGTGCCAACAGTGAAGTGTATCTCCGAACATAAACAAGATATCAATGCA  
AGCAGTATTGGATTATCTATAACCAAGCAGTTGTCTCCTAACTGGATCTGGACCCGCTGGAATTAATT  
GCCTTGCCAAACAGATTTTGCCTGCCACACTTGGTTGCACTTGCAGAACAGCATGCCGTTCAGGAGTTGA  
CCAAGCCGCCACGAGTGGCGTGGGCATTGACGGAGAAGTGTCTTACTTGAATTTGGCTCAGTTTCA  
CAATGCCACCAGTTGGCCGCTGGTGTGTCACCACATCTGCACCAACTACAACAGTGTATGCTCCAAG  
TTCCGTAAGGAAATCAAATCAAATCTGCAGACAACCAGGAATACTTCGAGCGGCACCGCTGGCCCCCTG  
TGTGGTACCTGAAGGAAGAAGATCACTACCAGCGTGTGAAAAGGGAACGAGAGAAGGAAGATATTGCACT  
AAATAAGCATCGCTCAAGACGAAAGTGGTGCTTCTGGAATTCATCTCCAGCAGTGGCC

ACGCGTACGCGGCCGCTCGAGCAGAACTCATCTCAGAAGAGGATCTGGCAGCAAATGATATCCTGGATT  
ACAAGGATGACGACGATAAGGTTTAA

**Protein Sequence:** >RC233088 representing NM\_001242359  
Red=Cloning site Green=Tags(s)

MDADMDYERPNETIKCVVVDNAV GKTRLICARACNTTLTQYQLLATHVPTVWAI DQYRVCQEV LERSR  
 DVVDEVSLSRLWDTFGDHHKDRRFAYGRSDVVVLCFSIANPNLSLNVKSMWYPEIKHFCPRTPVILVGC  
 QLDLRYADLEAVNRARRPLARPIKRGDILPPEKGREVAKELGLPYYETSVFDQFGIKDVFDAIRAALIS  
 RRHLQFWKSHLKKVQKPLLQAPFLPPKAPPPVIKIPECPSMGTNEAACLLDNPLCADVLFILQDQEHIFA  
 HRIYLATSSSKFYDLFLMECEESPNGSEGACEKEKQSRDFQGRILSVDPEEEREEGPPRIPQADQWKSSN  
 KSLVEALGLEAEGAVPETQTLTGWSKGFIGMHREMQVNPISKRMGPMTVVRMDASVQPGPFRTLLQFLYT  
 GQLDEKEKDLVGLAQIAEVLEMFDLRMMVENIMNKEAFMNQEITKAFHVRKANRIKECLSKGTFSDVTFK  
 LDDGAISAHKPLLICSCWMAAMFGGSFVESANSEVYLPNINKISMQAVLDYLYTKQLSPNLDLPLELI  
 ALANRFLPHLVALAEQHAVQELTKAATSGVGIDGEVLSYLELAQFHNAHQLAAWCLHHICTNYSVCSK  
 FRKEIKSKSADNQEYFERHRWPPVWYLKEEDHYQRVKREREKEDIALNKHSRRKWCWFNNSPAVA

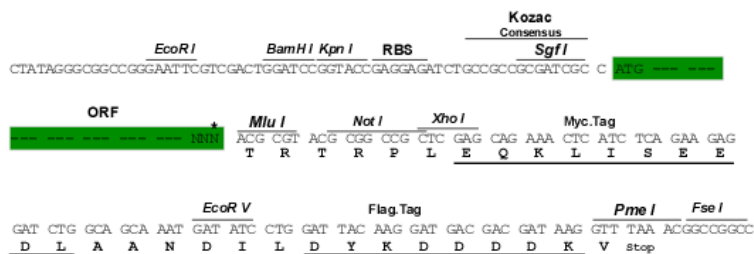
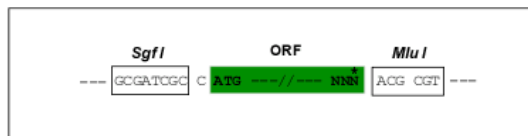
TRTRPLEQKLISEEDLANDILDYKDDDDKV

**Chromatograms:** [https://cdn.origene.com/chromatograms/mk6101\\_g10.zip](https://cdn.origene.com/chromatograms/mk6101_g10.zip)

**Restriction Sites:** SgfI-MluI

**Cloning Scheme:**

Cloning sites used for ORF Shuttling:



\* The last codon before the Stop codon of the ORF

**ACCN:** NM\_001242359

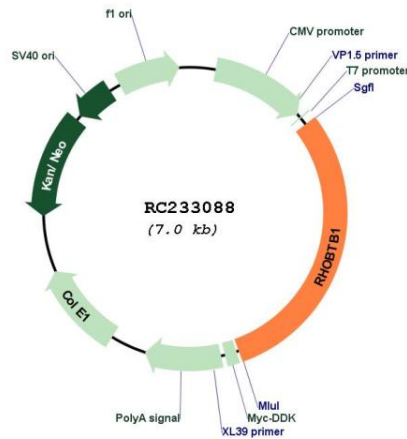
**ORF Size:** 2088 bp

**OTI Disclaimer:** The molecular sequence of this clone aligns with the gene accession number as a point of reference only. However, individual transcript sequences of the same gene can differ through naturally occurring variations (e.g. polymorphisms), each with its own valid existence. This clone is substantially in agreement with the reference, but a complete review of all prevailing variants is recommended prior to use. [More info](#)

**OTI Annotation:** This clone was engineered to express the complete ORF with an expression tag. Expression varies depending on the nature of the gene.

|                               |   |
|-------------------------------|---|
| <b>Components:</b>            | The ORF clone is ion-exchange column purified and shipped in a 2D barcoded Matrix tube containing 10ug of transfection-ready, dried plasmid DNA (reconstitute with 100 ul of water).  |
| <b>Reconstitution Method:</b> | <ol style="list-style-type: none"><li>1. Centrifuge at 5,000xg for 5min.</li><li>2. Carefully open the tube and add 100ul of sterile water to dissolve the DNA.</li><li>3. Close the tube and incubate for 10 minutes at room temperature.</li><li>4. Briefly vortex the tube and then do a quick spin (less than 5000xg) to concentrate the liquid at the bottom.</li><li>5. Store the suspended plasmid at -20°C. The DNA is stable for at least one year from date of shipping when stored at -20°C.</li></ol> |
| <b>RefSeq:</b>                | <a href="#">NM_001242359.2</a>  |
| <b>RefSeq Size:</b>           | 4587 bp   |
| <b>RefSeq ORF:</b>            | 2091 bp   |
| <b>Locus ID:</b>              | 9886  |
| <b>UniProt ID:</b>            | <a href="#">O94844</a>  |
| <b>Cytogenetics:</b>          | 10q21.2   |
| <b>MW:</b>                    | 79.4 kDa  |
| <b>Gene Summary:</b>          | The protein encoded by this gene belongs to the Rho family of the small GTPase superfamily. It contains a GTPase domain, a proline-rich region, a tandem of 2 BTB (broad complex, tramtrack, and bric-a-brac) domains, and a conserved C-terminal region. The protein plays a role in small GTPase-mediated signal transduction and the organization of the actin filament system. Alternate splicing results in multiple transcript variants. [provided by RefSeq, Dec 2008]                                     |

## Product images:



Circular map for RC233088