

Product datasheet for **RC232964**

KLHL3 (NM_001257194) Human Tagged ORF Clone

Product data:

Product Type:	Expression Plasmids
Product Name:	KLHL3 (NM_001257194) Human Tagged ORF Clone
Tag:	Myc-DDK
Symbol:	KLHL3
Synonyms:	PHA2D
Vector:	pCMV6-Entry (PS100001)
E. coli Selection:	Kanamycin (25 ug/mL)
Cell Selection:	Neomycin



[View online »](#)

ORF Nucleotide Sequence:

>RC232964 representing NM_001257194
 Red=Cloning site Blue=ORF Green=Tags(s)

TTTTGTAATACGACTCACTATAGGGCGGCCGGAATTCGTCGACTGGATCCGGTACCGAGGAGATCTGCC
 GCC**CGCATCGCC**

ATGGGAAAGCATTCAAGTTATGAATGAAGTACGCGGAGTAAACAGCTGTTGTGTGACGTGATGATTGTGG
 CAGAAGATGTCGAGATAGAAGCCACCGTGTGGTCTGGCAGCCTGCAGCCCTACTTCTGTGCGATGTT
 CACAGGTGACATGCTGAGAGTAAAGCCAAAAAGATAGAATCAAGGACGTGGATGGCAGACGCTGAGT
 AAGCTGATTGACTACATCTATACTGCTGAAATCGAGGTGACTGAAGAGAATGTCCAGGTGCTGCTCCCGG
 CAGCCAGCTTGTGCAGCTCATGGATGTTCCGCGAAGTCTGTGACTTCTGCAGTCTCAGTTGCATCC
 CACCAATTGCCTGGGCATCCGTGCATTTGCAGATGTACACACCTGCACTGACCTTCTGCAGCAGGCCAAT
 GCCTACGCAGAGCAGCACTTTCCAGAGGTGATGCTAGGAGAAGAATTTCTTAGCCTGAGTCTGGACCAGG
 TGTGCAGCTTGATATCCAGCGACAAGCTGACCGTTTCTCAGAAGAGAAGGTGTTGAAGCTGTGATCTC
 ATGGATCAATTATGAGAAAGAAACCCGTTTAGAGCACATGGCAAAGCTGATGGAACATGTCCGACTTCTC
 CTCTTACCTAGGGACTACCTAGTCCAAACGGTTGAAGAAGAAGCTTTGATAAAGAATAACAACACCTGTA
 AAGACTTCTCATTGAGGCCATGAAATACCATCTCCTCCCTCTGGATCAGAGACTATTGATTAAGAACCC
 AAGGACCAAGCCAGGACTCCAGTCAGCCTTCCCAAGGTCATGATTGTGGTTGGCGGCCAGGCACCCAAG
 GCAATCCGCAGTGTGGAGTGCTATGATTTCGAGGAGGACCGGTGGGATCAGATTGCTGAGCTTCTTCCA
 GAAGATGCAGAGCAGGTGTGGTGTTCATGGCTGGCCACGTGTATGCCGTGGGAGGGTTAATGGCTCACT
 GCGGGTGGGACAGTGGATGTGTATGACGGCGTGAAGGACAGTGGACGTCATTGCCAGCATGCAGGAG
 CGCCGGAGCACACTGGGCGCAGCGGTGCTCAATGACTTGTCTACGCAGTGGGAGGCTTTGATGGCAGTA
 CTGGCTAGCATCGTGGGAAGCCTACAGCTACAAGACCAACGAGTGGTTCTTTGTGGCCCGCATGAACAC
 CGGGCGGAGCAGTGTGGGTGTGGCGTGTGGAGGGGAAGCTATATGCTGTTGGGGTTATGATGGAGCT
 TCCCGCCAGTGTCTGAGCACTGTGGAGCAGTACAACCCAGCGACCAATGAATGGATATACGTGGCGGACA
 TGAGCACCCGCCGAGTGGCGCAGGGGTTGGAGTGCTTAGCGGACAGCTGTACGCCACAGGTGGGCATGA
 TGGGCTTTGGTGGAGGAAGCGTTGAGGTTTACGATCCTGGAACAAATACCTGGAAGCAAGTGGCAGAC
 ATGAACATGTGCCGGCGCAACGCAGGGGCTGTGCAGTAAATGGGCTCCTGTATGTGGTTGGAGGGGATG
 ATGGATCTGCAACTTGGCTTCCGTGGAGTACTACAATCCTGTCAGTACAAATGGACGCTGCTTCCAAC
 GAACATGAGCACGGGGCGGAGCTATGCAGGTGTTGCCGTATTACAAGTCTTTG

ACGCGTACGCGGCCGCTCGAGCAGAAACTCATCTCAGAAGAGGATCTGGCAGCAAATGATATCCTGGATT
 ACAAGGATGACGACGATAAGGTTTAA

Protein Sequence:

>RC232964 representing NM_001257194
 Red=Cloning site Green=Tags(s)

MGKAFKVMNELRSKQLLCDVMIVAEDVEIEAHRVLAACSPYFCAMFTGDMSESKAKKIEIKDVDGQTL
 KLIDYIYTAEIEVTEENVQVLLPAASLLQLMDVRQNCDFLQSQLHPTNCLGIRAFADVHTCTDLLQAN
 AYAEQHFPEVMLGEEFLSLDQVCSLISDCLTVSSEKVFVAVISWINYEKETRLEHMAKLMHVRLP
 LLPRDYLVQTVVEEALIKNNNTCKDFLIEAMKYHLLPLDQRLLIKPNRTPKPRTPVSLPKVMIVVGGQAPK
 AIRSVECYDFEEDRWQIAELPSRRRCRAGVVFVFMAGHVYAVGGFNGSLRVRTVDVYDGVKDQWTSIASMQE
 RRSTLGAAVLNDLLYAVGGFDGSTGLASVEAYSYKTNEWFFVAPMNRSSVGVGVVEGKLYAVGGYDGA
 SRQCLSTVEQYNPATNEWIYVADMSTRRSAGVGVLSGQLYATGGHDGPLVRKSVEVYDPGTNTWKQVAD
 MNMCRNAGVCAVNGLLYVVGDDGSCNLSAVEYYPVTDKWTLLPTNMSTGRSYAGVAVIHKSL

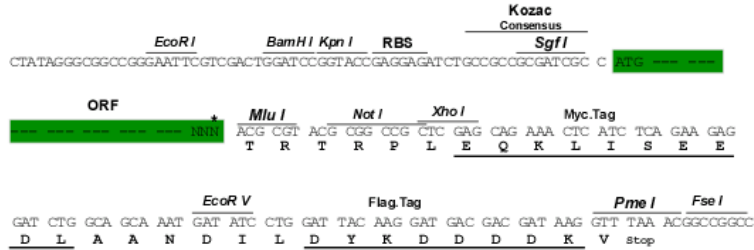
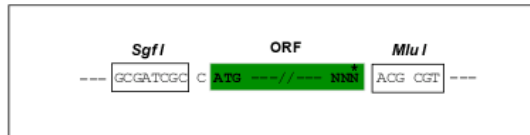
TRTRPLEQ**KL**ISEEDLAANDILDYKDDDDKV

Restriction Sites:

SgfI-MluI

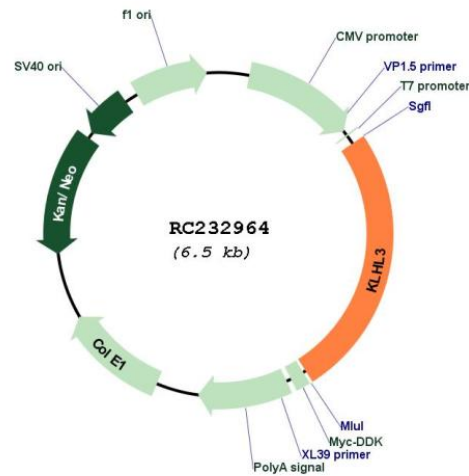
Cloning Scheme:

Cloning sites used for ORF Shutting:



* The last codon before the Stop codon of the ORF

Plasmid Map:



ACCN:	NM_001257194
ORF Size:	1665 bp
OTI Disclaimer:	The molecular sequence of this clone aligns with the gene accession number as a point of reference only. However, individual transcript sequences of the same gene can differ through naturally occurring variations (e.g. polymorphisms), each with its own valid existence. This clone is substantially in agreement with the reference, but a complete review of all prevailing variants is recommended prior to use. More info
OTI Annotation:	This clone was engineered to express the complete ORF with an expression tag. Expression varies depending on the nature of the gene.
Components:	The ORF clone is ion-exchange column purified and shipped in a 2D barcoded Matrix tube containing 10ug of transfection-ready, dried plasmid DNA (reconstitute with 100 ul of water).
Reconstitution Method:	<ol style="list-style-type: none">1. Centrifuge at 5,000xg for 5min.2. Carefully open the tube and add 100ul of sterile water to dissolve the DNA.3. Close the tube and incubate for 10 minutes at room temperature.4. Briefly vortex the tube and then do a quick spin (less than 5000xg) to concentrate the liquid at the bottom.5. Store the suspended plasmid at -20°C. The DNA is stable for at least one year from date of shipping when stored at -20°C.
RefSeq:	NM_001257194.1 , NP_001244123.1
RefSeq Size:	6981 bp
RefSeq ORF:	1668 bp
Locus ID:	26249
UniProt ID:	Q9UH77
Cytogenetics:	5q31.2
MW:	61.9 kDa
Gene Summary:	This gene is ubiquitously expressed and encodes a full-length protein which has an N-terminal BTB domain followed by a BACK domain and six kelch-like repeats in the C-terminus. These kelch-like repeats promote substrate ubiquitination of bound proteins via interaction of the BTB domain with the CUL3 (cullin 3) component of a cullin-RING E3 ubiquitin ligase (CRL) complex. Mutations in this gene cause pseudohypoadosteronism type IID (PHA2D); a rare Mendelian syndrome featuring hypertension, hyperkalaemia and metabolic acidosis. Alternative splicing results in multiple transcript variants encoding distinct isoforms. [provided by RefSeq, Mar 2012]